



**B&T**

**fabric collection.**

[www.bt.design](http://www.bt.design)



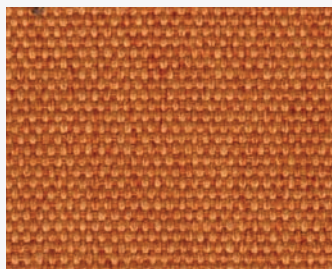
# new sabine.

class.A

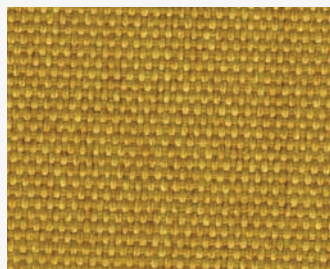
supplier. alya  
origin. turkey  
type. fabric



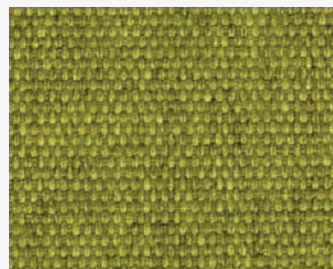
**pink**



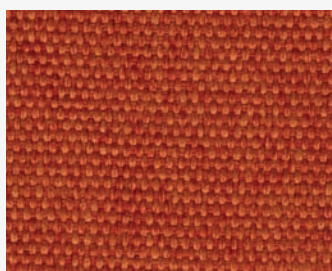
**maroc**



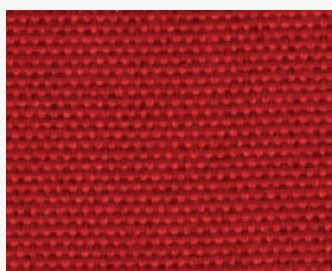
**yellow**



**kiwi**



**apricot**



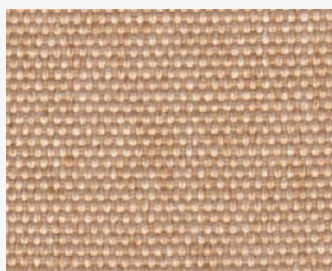
**cherry**



**white**



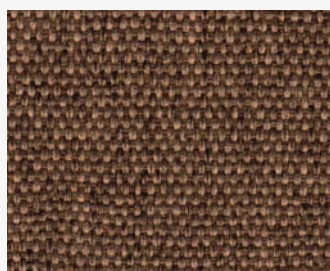
**ivory**



**tan**



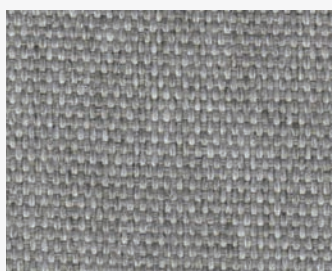
**stone**



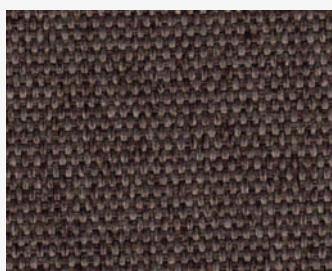
**saddle**



**brown**



**silver**



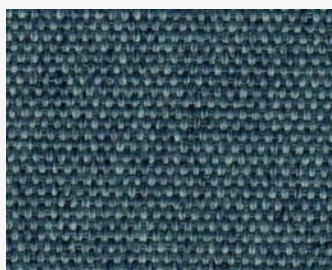
**taupe**



**choco**



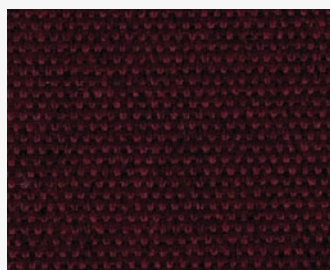
**antrasit**



**aqua**



**blue**



**wine**



**lilac**

# new sabine.

class.A

**supplier.** alya  
**origin.** turkey  
**type.** fabric



**black**

# new sabine.

class.A

## product specifications

| Technical Informations      | Unit                         | Value                 | Test Method            |
|-----------------------------|------------------------------|-----------------------|------------------------|
| weight                      | gr. / m <sup>2</sup>         | 380                   | ISO 3801               |
| width                       | cm                           | 137                   | ISO 22198              |
| roll meter                  | mt                           | 50                    | ISO 12947-2 / ISO 1294 |
| strenght abrosive           | martindale<br>5000 devir / 4 | 3                     | ISO 12947-2            |
| strenght abrosive           | martindale<br>1. iplik       | 40.000                | -                      |
| tear strenght               | N                            | atkı 154<br>çözgü 190 | ISO 13937-2            |
| resistance to seam slippage | mm                           | atkı 0-1<br>çözgü 1-2 | ISO 13906-2            |
| pilling                     | 2000 dvr                     | 4                     | ISO 12945-2            |
| color fastness              | -                            | kuru 5<br>yaş 5       | ISO 105-X12            |
| composition                 | %100 polyester               |                       |                        |

### product characteristics

Pigment bleed and colour abrasion may occur with dark and intensive colours. Pilling cannot be avoided and may also occur through the adhesion of fibres from other sources. All flat-woven fabrics may roughen in use and patina and glossy spots may occur. Pulled threads are to be expected if sharp objects catch in the fabric. Depending on the material, a slight striped effect may occur. Light colours will show soiling and jeans abrasion more quickly and clearly than darker colours. A minor loss of colour through exposure to UV rays is unavoidable, particularly with intensive colours. Minor variations in colour and texture between product lots are unavoidable and may occur.

### instructions for use

A certain degree of fading of the colours, due to exposure to light or abrasion through use over time, is also part of the nature of flat-woven fabrics. We do not take over a warranty on damage, which resulted from inappropriate use, chemical cleaning or additional impregnation.

### care instructions

You can help to maintain the original beauty of your covering fabric furniture by treating it carefully and caring for it properly. Please therefore heed the following recommendations:

- › Avoid exposing your brand new upholstered furniture to direct sunlight
- › Do not position your new upholstered furniture directly in front of heat sources.
- › Avoid contact between your upholstered furniture and rough clothing.
- › Remove inevitable dust and minor soiling through gentle vacuuming and using a soft upholstery nozzle.

### cleaning

Do not use any abrasive detergents that could damage your new covering fabric. Any stains should be dabbed immediately with a cotton cloth and cleaned in a circular motion working from the outside in. Test any cleaning products on a hidden area first to ascertain their compatibility.

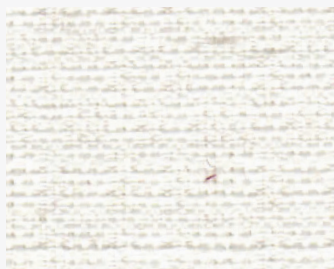




# elegance.

class.A

supplier. alya  
origin. turkey  
type. fabric



130



151



434



506



425



405



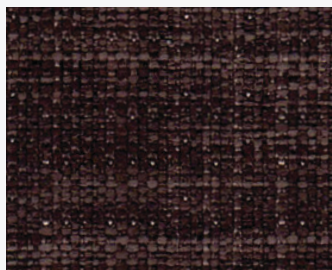
603



486



498



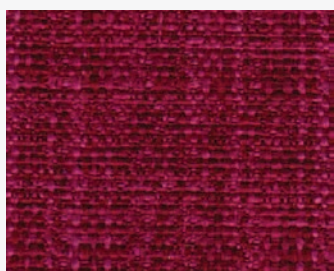
384



256



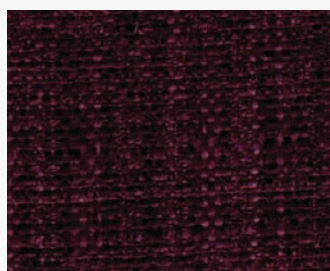
205



567



343



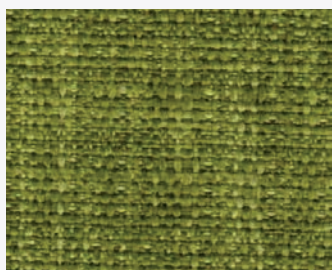
344



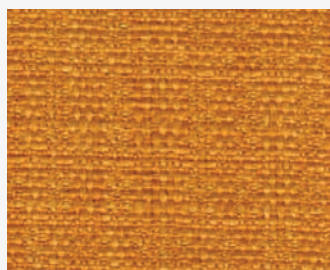
157



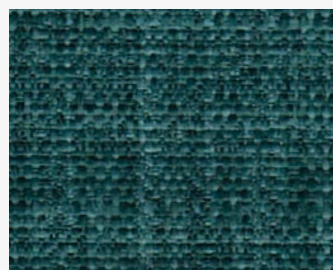
263



174



453

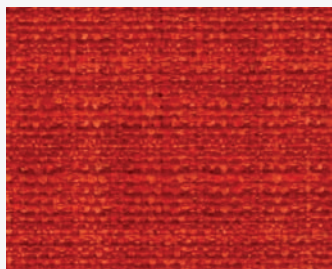


496

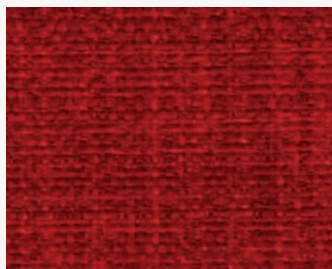
# elegance.

class.A

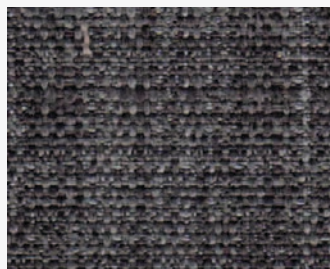
**supplier.** alya  
**origin.** turkey  
**type.** fabric



**332**



**277**



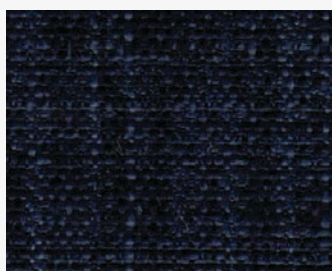
**355**



**525**



**186**



**104**



# elegance.

## class.A

### product specifications

| Technical Informations      | Unit                         | Value                 | Test Method            |
|-----------------------------|------------------------------|-----------------------|------------------------|
| weight                      | gr. / m <sup>2</sup>         | 296                   | -                      |
| width                       | cm                           | 140                   | -                      |
| roll meter                  | mt                           | 50                    | -                      |
| strenght abrosive           | martindale<br>5000 devir / 4 | 4                     | ISO 12947-2 / ISO 1294 |
| strenght abrosive           | martindale<br>1. iplik       | 35.000                | ISO 12947-2            |
| tear strenght               | N                            | atkı 363<br>çözgü 305 | ISO 13937-2            |
| pilling                     | 2000 dvr / 4                 | 3                     | ISO 12945-2            |
| resistance to seam slippage | mm                           | atkı 4-5<br>çözgü 5-6 | ISO 13936-2            |
| color fastness              | >=4 >=3                      | kuru 5<br>yaş 5       | ISO 105-X12            |
| composition                 | %100 polyester               |                       |                        |

#### product characteristics

Pigment bleed and colour abrasion may occur with dark and intensive colours. Pilling cannot be avoided and may also occur through the adhesion of fibres from other sources. All flat-woven fabrics may roughen in use and patina and glossy spots may occur. Pulled threads are to be expected if sharp objects catch in the fabric. Depending on the material, a slight striped effect may occur. Light colours will show soiling and jeans abrasion more quickly and clearly than darker colours. A minor loss of colour through exposure to UV rays is unavoidable, particularly with intensive colours. Minor variations in colour and texture between product lots are unavoidable and may occur.

#### instructions for use

A certain degree of fading of the colours, due to exposure to light or abrasion through use over time, is also part of the nature of flat-woven fabrics. We do not take over a warranty on damage, which resulted from inappropriate use, chemical cleaning or additional impregnation.

#### care instructions

You can help to maintain the original beauty of your covering fabric furniture by treating it carefully and caring for it properly. Please therefore heed the following recommendations:

- › Avoid exposing your brand new upholstered furniture to direct sunlight
- › Do not position your new upholstered furniture directly in front of heat sources.
- › Avoid contact between your upholstered furniture and rough clothing.
- › Remove inevitable dust and minor soiling through gentle vacuuming and using a soft upholstery nozzle.

#### cleaning

Do not use any abrasive detergents that could damage your new covering fabric. Any stains should be dabbed immediately with a cotton cloth and cleaned in a circular motion working from the outside in. Test any cleaning products on a hidden area first to ascertain their compatibility.

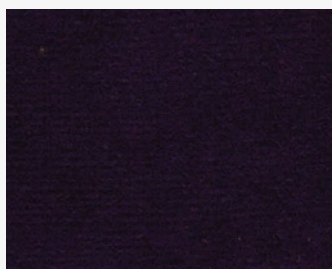
# riva.

class.A

supplier. alya  
origin. turkey  
type. fabric



604a



603c



602c



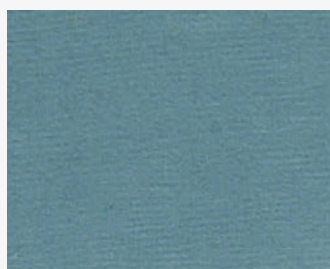
235



265



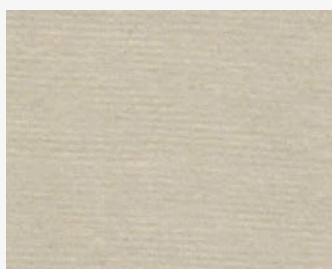
245



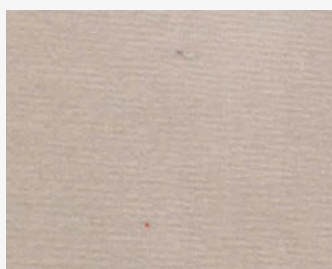
601b



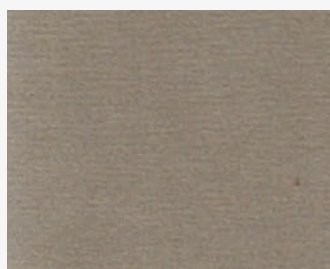
101



202



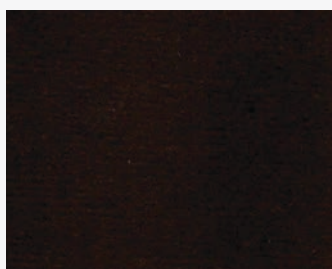
233



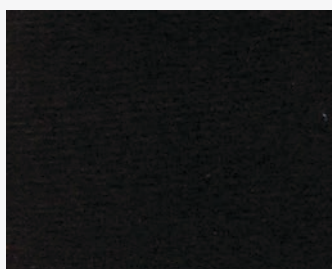
100



012



123



004



132



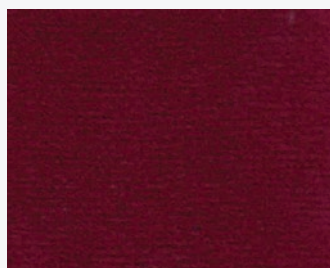
225



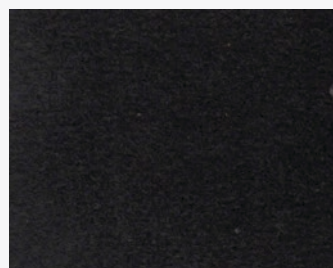
007



253



605b



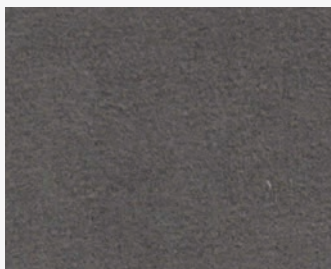
267



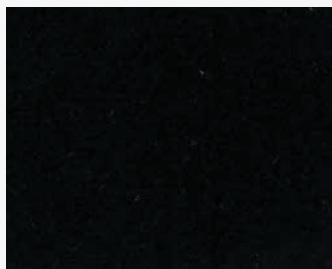
# riva.

class.A

**supplier.** alya  
**origin.** turkey  
**type.** fabric



**234**



**m10**

## product specifications

| Technical Informations  | Unit                 | Value                              | Test Method               |
|-------------------------|----------------------|------------------------------------|---------------------------|
| weight                  | gr. / m <sup>2</sup> | 350                                | -                         |
| thickness               | mm                   | -                                  | -                         |
| width                   | cm                   | 150                                | -                         |
| roll meter              | mt                   | 45-50                              | -                         |
| resistance to abrasion  | tour                 | 1000.000                           | ISO 12947-2:1998 (12 kpa) |
| tensile strength        | N                    | weft 665,0<br>warp 242,3<br>36.3 % | EN ISO 13934-1:2013       |
| tear strenght           | N                    | weft 49,1<br>warp 95,8             | TS EN ISO 13937-3:2000    |
| pilling                 | -                    | 5                                  | ISO 12945-2:2000 (415 g)  |
| colour fastness - wet   | -                    | 4-5                                | TS EN ISO-105-X12:2002    |
| colour fastness - dry   | -                    | 4-5                                | TS EN ISO-105-X12:2002    |
| color fastness to light | -                    | 5                                  | TS EN ISO 102 B02:2013    |
| composition             | %100 polyester       |                                    |                           |

### product characteristics

Pigment bleed and colour abrasion may occur with dark and intensive colours. Pilling cannot be avoided and may also occur through the adhesion of fibres from other sources. All flat-woven fabrics may roughen in use and patina and glossy spots may occur. Pulled threads are to be expected if sharp objects catch in the fabric. Depending on the material, a slight striped effect may occur. Light colours will show soiling and jeans abrasion more quickly and clearly than darker colours. A minor loss of colour through exposure to UV rays is unavoidable, particularly with intensive colours. Minor variations in colour and texture between product lots are unavoidable and may occur.

### instructions for use

A certain degree of fading of the colours, due to exposure to light or abrasion through use over time, is also part of the nature of flat-woven fabrics. We do not take over a warranty on damage, which resulted from inappropriate use, chemical cleaning or additional impregnation.

### care instructions

You can help to maintain the original beauty of your covering fabric furniture by treating it carefully and caring for it properly. Please therefore heed the following recommendations:

- › Avoid exposing your brand new upholstered furniture to direct sunlight
- › Do not position your new upholstered furniture directly in front of heat sources.
- › Avoid contact between your upholstered furniture and rough clothing.
- › Remove inevitable dust and minor soiling through gentle vacuuming and using a soft upholstery nozzle.

### cleaning

Do not use any abrasive detergents that could damage your new covering fabric. Any stains should be dabbed immediately with a cotton cloth and cleaned in a circular motion working from the outside in. Test any cleaning products on a hidden area first to ascertain their compatibility.

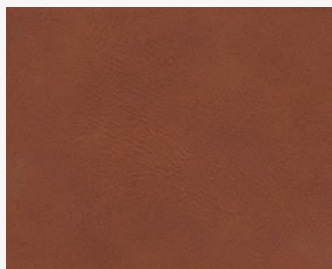




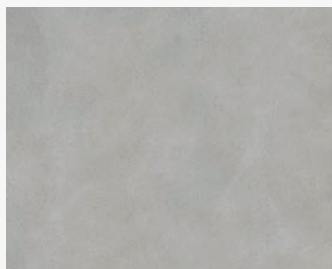
# canyon.

class.A

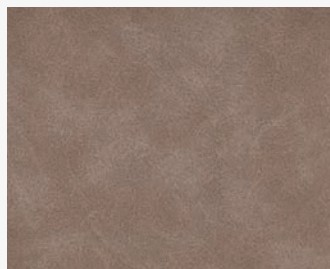
**supplier.** alya  
**origin.** turkey  
**type.** artificial leather



**lab21728**



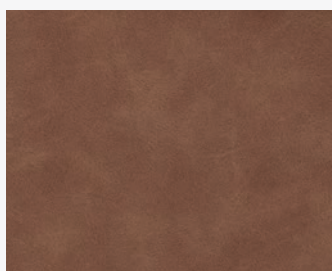
**lab21745**



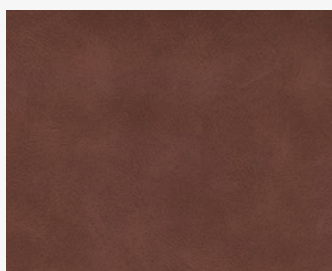
**lab21746**



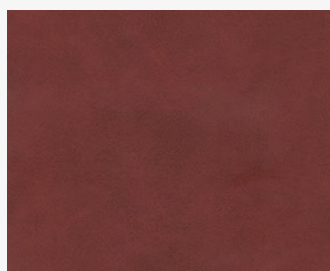
**lab21747**



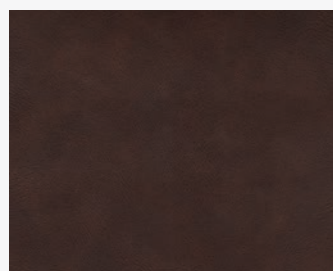
**lab21749**



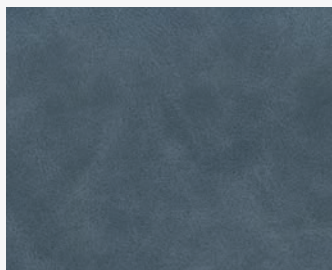
**lab21750**



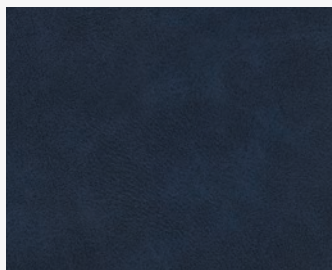
**lab21751**



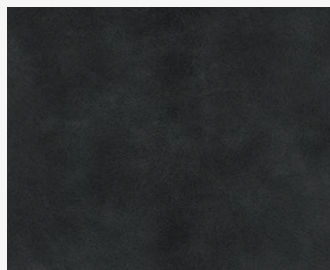
**lab21753**



**lab21755**



**lab21757**



**lab21758**

# canyon.

class.A

## product specifications

| Technical Informations | Unit                               | Value     | Test Method                      |
|------------------------|------------------------------------|-----------|----------------------------------|
| weight                 | gr. / m <sup>2</sup>               | 790 (±5)  | TS 6450                          |
| thickness              | mm                                 | 1 (±5)    | ISO 2589                         |
| width                  | cm                                 | 138 / 140 | TS 4119                          |
| roll meter             | mt                                 | 30        | -                                |
| light fastness         | -                                  | 5         | DIN EN ISO 105-B02:2002          |
| flammability           | -                                  | pass      | EN ISO 1021 1&2<br>5852 PART 0&1 |
| içerik / composition   | % 73 pvc   % 23 polyester   % 4 PU |           |                                  |

### product characteristics

Pigment bleed and colour abrasion may occur with dark and intensive colours. Pilling cannot be avoided and may also occur through the adhesion of fibres from other sources. All flat-woven fabrics may roughen in use and patina and glossy spots may occur. Pulled threads are to be expected if sharp objects catch in the fabric. Depending on the material, a slight striped effect may occur. Light colours will show soiling and jeans abrasion more quickly and clearly than darker colours. A minor loss of colour through exposure to UV rays is unavoidable, particularly with intensive colours. Minor variations in colour and texture between product lots are unavoidable and may occur.

### instructions for use

A certain degree of fading of the colours, due to exposure to light or abrasion through use over time, is also part of the nature of flat-woven fabrics. We do not take over a warranty on damage, which resulted from inappropriate use, chemical cleaning or additional impregnation.

### care instructions

You can help to maintain the original beauty of your covering fabric furniture by treating it carefully and caring for it properly. Please therefore heed the following recommendations:

- › Avoid exposing your brand new upholstered furniture to direct sunlight
- › Do not position your new upholstered furniture directly in front of heat sources.
- › Avoid contact between your upholstered furniture and rough clothing.
- › Remove inevitable dust and minor soiling through gentle vacuuming and using a soft upholstery nozzle.

### cleaning

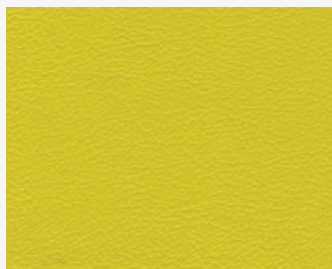
Do not use any abrasive detergents that could damage your new covering fabric. Any stains should be dabbed immediately with a cotton cloth and cleaned in a circular motion working from the outside in. Test any cleaning products on a hidden area first to ascertain their compatibility.



# ply arden.

class.A

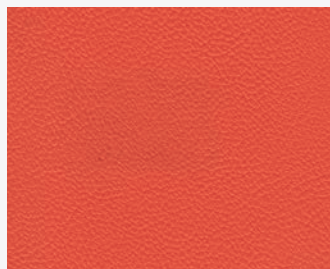
**supplier.** sertex  
**origin.** turkey  
**type.** artificial leather



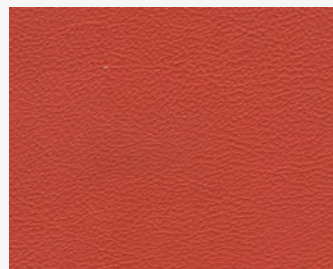
111



302



257



263



403



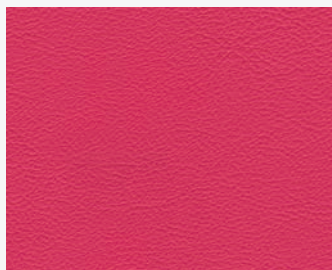
416



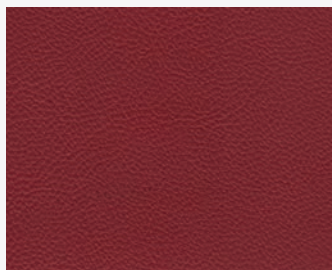
224



227



217



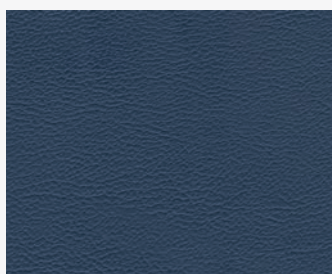
220



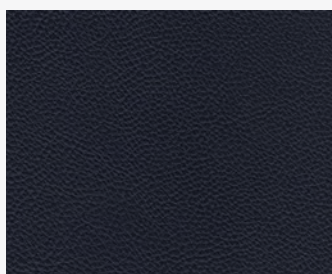
507



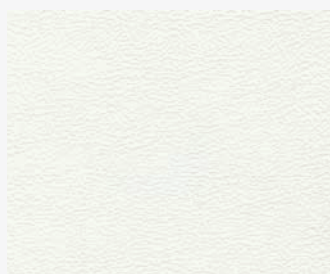
510



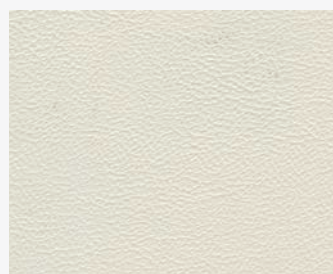
523



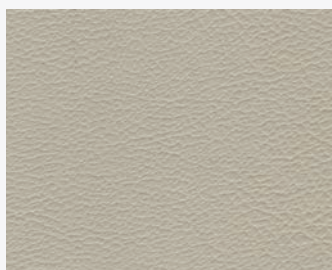
570



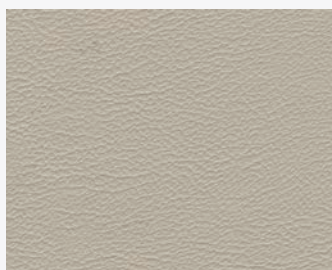
1



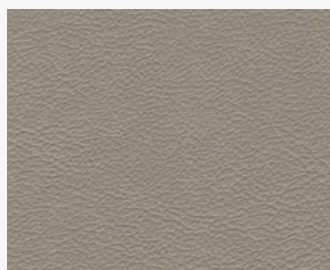
17



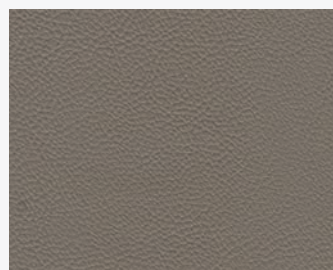
11



6



50

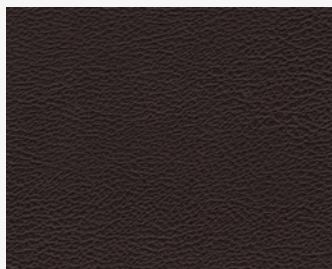


62

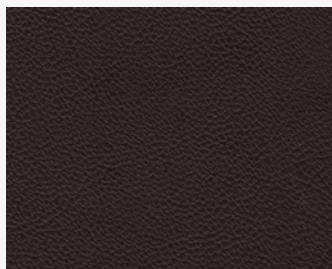
# ply arden.

class.A

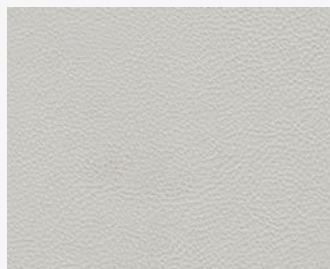
**supplier.** sertex  
**origin.** turkey  
**type.** artificial leather



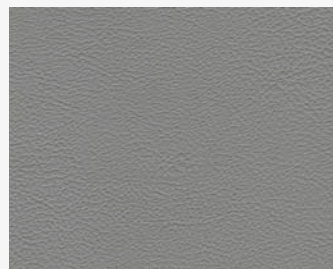
275



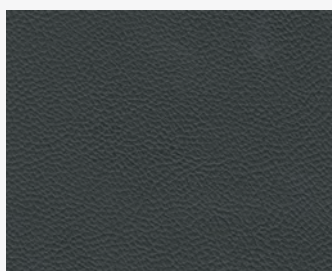
595



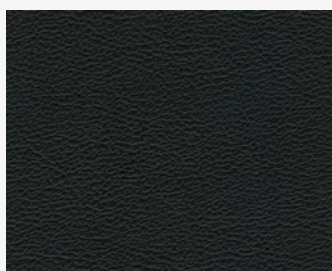
13



602



617



901

# ply arden.

class.A

## product specifications

| Technical Informations      | Unit  | Value                             | Test Method                |
|-----------------------------|---|-----------------------------------|----------------------------|
| weight                      | gr. / m <sup>2</sup>                                | 500 ± 5 %                         | ISO 2286-2                 |
| thickness                   | mm  | 0.95 ± 5 %                        | ISO 2286-3                 |
| tensile strenght            | n<br>n  | across min 300<br>elong min 300   | ISO 1421<br>ISO 1421       |
| tear strenght               | n<br>n  | across min 25<br>elong min 35     | ISO 4674-1<br>ISO 4674-1   |
| elongation at break         | %<br>%  | across 90 ± 5 %<br>elong 85 ± 5 % | ISO 1421<br>ISO 1421       |
| flexing endurance           | flx   | min. 100000                       | ISO 5402                   |
| abrasion resistance         | rub   | min. 22000                        | ISO 5470-2                 |
| color fastness to rubbing   | gs<br>gs  | dry min. 4<br>wet min. 4          | ISO 105-X12<br>ISO 105-X12 |
| light fastness light colors | bw  | min. 3                            | ISO 105-B02                |
| light fastness dark colors  | bw  | min. 5                            | ISO 105-B02                |
| composition                 | 2% polyurthane 80% polyvinyl chloride 18% polyester |                                   |                            |

"Azo-dyes, heavy metals, pesticides, pcg/tec, formaldehyde, pcb are within allowable limits in products due to Eko-tex standart 100.

In case of coffee, tea, etc spills: use an absorbent cloth or piece of paper. Do not rub! Allow the stain to be Absorbed until it is removed from the material surface. Rub very gently with a tissue paper applying gentle circular

Movements to remove any remaining humidity.

In case of dust: To remove dust, it is advisable to use a vacuum cleaner or a soft brush. Protect from direct sunlight. Do not clean with bleach or alcohol.

"Valid for all colors. (Red colors may have less color fastness to rubbing)"





# mine.

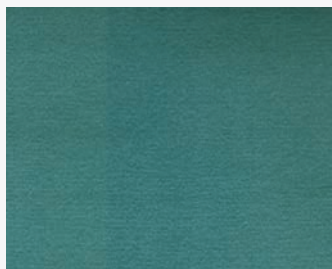
class.A

**supplier.** arti textile

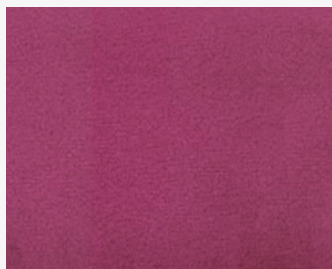
**origin.** italy

**type.** fabric

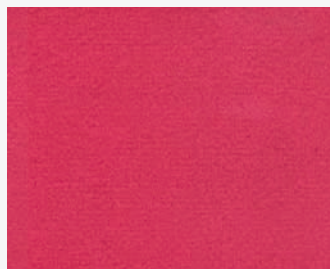
fire-reterdant  
easy cleaning  
washable at 30°



006



009



0012



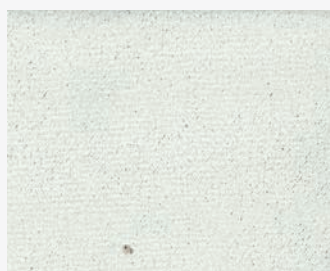
0014



0022



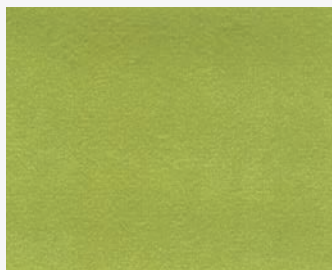
0025



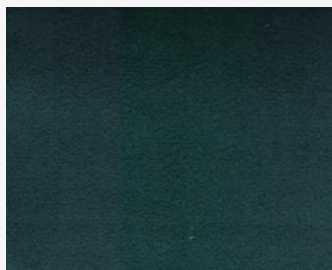
0031



0037



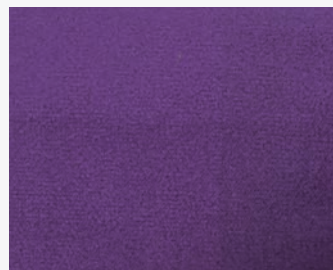
0038



0039



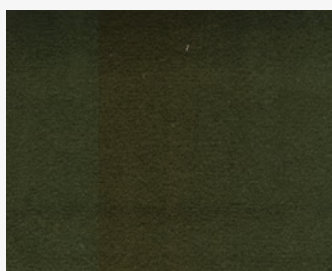
0045



0046



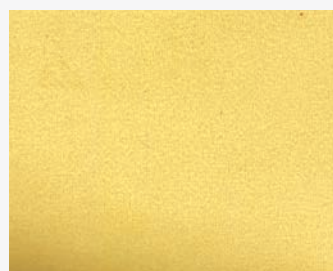
0057



0062



0066



0069



0084



0104

## product specifications

| Technical informations | Unit                           | Value  | Test Method    |
|------------------------|--------------------------------|--------|----------------|
| weight                 | gr. / m <sup>2</sup>           | 430    | -              |
| width                  | cm                             | 140    | -              |
| roll meter             | m                              | 45-50  | -              |
| resistance to abrasion | martindale                     | 30.000 | EN ISO 12947-2 |
| pilling                | martindale                     | 4      | EN ISO 12945-2 |
| rubbing fastness       | dry<br>wet                     | 4<br>3 | ISO 105-X12    |
| light fastness         | bright colours<br>dark colours | 4<br>4 | ISO 105-B02    |
| composition            | %100 polyester                 |        |                |

### product characteristics

Pigment bleed and colour abrasion may occur with dark and intensive colours. Pilling cannot be avoided and may also occur through the adhesion of fibres from other sources. All flat-woven fabrics may roughen in use and patina and glossy spots may occur. Pulled threads are to be expected if sharp objects catch in the fabric. Depending on the material, a slight striped effect may occur. Light colours will show soiling and jeans abrasion more quickly and clearly than darker colours. A minor loss of colour through exposure to UV rays is unavoidable, particularly with intensive colours. Minor variations in colour and texture between product lots are unavoidable and may occur.

### instructions for use

A certain degree of fading of the colours, due to exposure to light or abrasion through use over time, is also part of the nature of flat-woven fabrics. We do not take over a warranty on damage, which resulted from inappropriate use, chemical cleaning or additional impregnation.

### care instructions

You can help to maintain the original beauty of your covering fabric furniture by treating it carefully and caring for it properly. Please therefore heed the following recommendations:

- › Avoid exposing your brand new upholstered furniture to direct sunlight
- › Do not position your new upholstered furniture directly in front of heat sources.
- › Avoid contact between your upholstered furniture and rough clothing.
- › Remove inevitable dust and minor soiling through gentle vacuuming and using a soft upholstery nozzle.

### cleaning

Do not use any abrasive detergents that could damage your new covering fabric. Any stains should be dabbed immediately with a cotton cloth and cleaned in a circular motion working from the outside in. Test any cleaning products on a hidden area first to ascertain their compatibility.



# bordeaux.

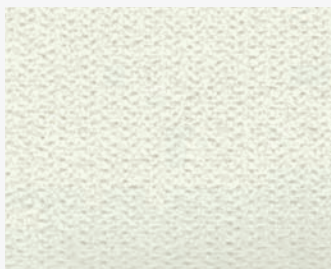
class.A

**supplier.** arti textile

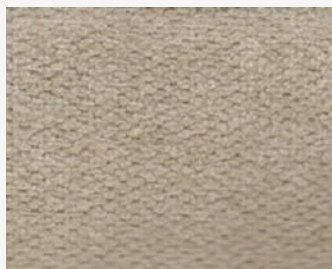
**origin.** belgium

**type.** fabric

fire-reterdant  
easy cleaning  
washable at 30°



**02** white



**04** sand



**15** light brown



**710** taupe



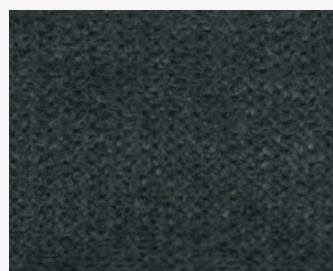
**210** espresso



**121** silver



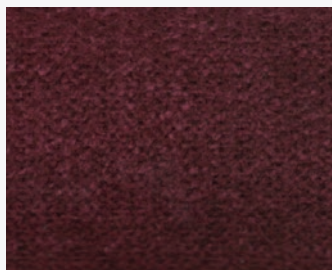
**120** light grey



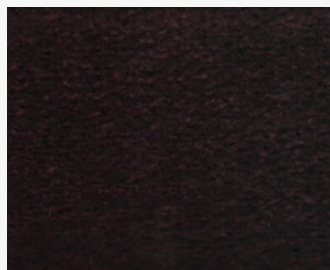
**484** dark grey



**520** mustard



**36** chianti



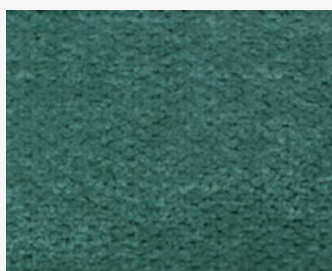
**550** blackberry



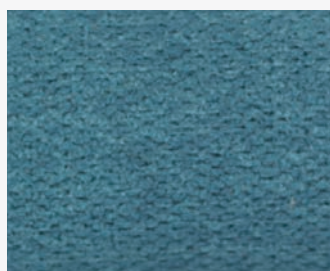
**430** bamboo



**429** green



**707** petrol



**705** azure



**09** blue



# bordeaux.

class.A

## product specifications

| Technical Informations                  | Unit  | Value               | Test Method              |
|---|---|---------------------|--------------------------|
| roll length                             | m   | ~ 35                | -                        |
| useable width                           | cm  | 140 cm $\pm$ 2 cm   | -                        |
| thickness                               | mm  | 1.1 mm $\pm$ 2 %    | -                        |
| width                                   | m   | 140 cm $\pm$ 2 cm   | -                        |
| weight                                  | m   | 434 g $\pm$ 5 %     | DIN EN 12127             |
| weight                                  | m <sup>2</sup>                                | 310 g $\pm$ 5 %     | DIN EN 12127             |
| abrasion test                           | cycles  | 32.000              | EN ISO 12947-1,2         |
| pilling test                            | -   | 5                   | EN ISO 12945-2 (2.000 T) |
| tensile strength                        | warp<br>weft                                  | 1422.9 N<br>469.6 N | EN ISO 13934-1           |
| tear growth resistance                  | warp<br>weft                                  | 80.4 N<br>45.4 N    | EN ISO 13937-3           |
| resistance to seam slippage             | warp<br>weft                                  | 3.0 mm<br>3.0 mm    | EN ISO 13936-2           |
| fastness to rubbing                     | bright colours<br>dark colours                | 5<br>5              | EN ISO 105-X12 dry       |
| fastness to rubbing                     | bright colours<br>dark colours                | 4<br>4              | EN ISO 105-X12 wet       |
| fastness to light                       | bright colours<br>dark colours                | 5<br>5              | EN ISO 105-B02           |
| composition surface<br>composition base | 98% polyester, 2% polyamide<br>100% polyester |                     |                          |

### Typical product characteristics

Pigment bleed and colour abrasion may occur with dark and intensive colours. Pilling cannot be avoided and may also occur through the adhesion of fibres from other sources. All flat-woven fabrics may roughen in use and patina and glossy spots may occur. Pulled threads are to be expected if sharp objects catch in the fabric. Depending on the material, a slight striped effect may occur. Light colours will show soiling and jeans abrasion more quickly and clearly than darker colours. A minor loss of colour through exposure to UV rays is unavoidable, particularly with intensive colours. Minor variations in colour and texture between product lots are unavoidable and may occur.

### Instructions for use

A certain degree of fading of the colours, due to exposure to light or abrasion through use over time, is also part of the nature of flat-woven fabrics. We do not take over a warranty on damage, which resulted from inappropriate use, chemical cleaning or additional impregnation.

### Care instructions

You can help to maintain the original beauty of your covering fabric furniture by treating it carefully and caring for it properly. Please therefore heed the following recommendations:

- › Avoid exposing your brand new upholstered furniture to direct sunlight
- › Do not position your new upholstered furniture directly in front of heat sources.
- › Avoid contact between your upholstered furniture and rough clothing.
- › Remove inevitable dust and minor soiling through gentle vacuuming and using a soft upholstery nozzle.

### Cleaning

Do not use any abrasive detergents that could damage your new covering fabric. Any stains should be dabbed immediately with a cotton cloth and cleaned in a circular motion working from the outside in. Test any cleaning products on a hidden area first to ascertain their compatibility.

# san francisco.

class.A

**supplier.** arti textile

**origin.** belgium

**type.** fabric

fire-reterdant  
easy cleaning  
washable at 30°



**02** white



**01** nature



**05** camel



**210** espresso



**13** sahara



**15** light brown



**30** coffee



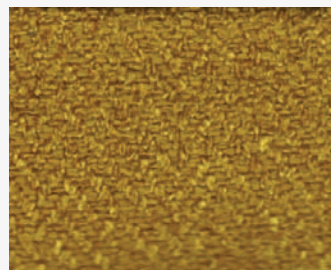
**121** silver



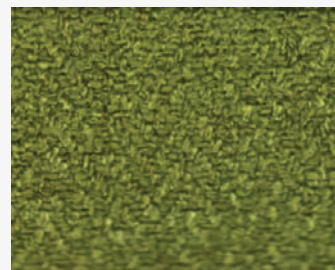
**120** light grey



**46** anthracite



**520** mustard



**430** bamboo



**751** olive



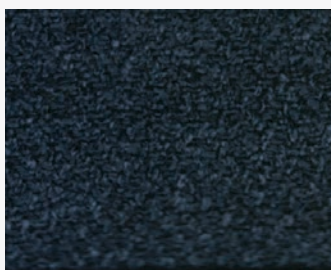
**511** terra



**550** blackberry



**705** azure



**09** blue



**678** midnight

# san francisco.

class.A

## product specifications

| Technical informations      | Unit                           | Value               | Test Method              |
|-----------------------------|--------------------------------|---------------------|--------------------------|
| weight                      | m                              | 507 g ± 5 %         | EN 12127                 |
| weight                      | m²                             | 350 g ± 5 %         | EN 12127                 |
| width                       | m                              | 145 ± 2 cm          | -                        |
| roll length                 | m                              | ~ 50                | -                        |
| useable width               | cm                             | 144 ± 2 cm          | -                        |
| thickness                   | mm                             | 1.3 ± 2 cm          | -                        |
| abrasion                    | martindale                     | 100.000             | EN ISO 12947-1,2         |
| pilling                     | martindale                     | 4-5                 | EN ISO 12945-2 (2.000 T) |
| tensile strength            | warp<br>weft                   | 1427.5 N<br>933.1 N | EN ISO 13934-1           |
| tear growth resistance      | warp<br>weft                   | 207.6 N<br>158.8 N  | EN ISO 13937-3           |
| resistance to seam slippage | warp<br>weft                   | 3.0 mm<br>3.0 mm    | EN ISO 13936-2           |
| fastness to rubbing         | bright colours<br>dark colours | 5<br>5              | EN ISO 105-X12 dry       |
| fastness to rubbing         | bright colours<br>dark colours | 5<br>5              | EN ISO 105-X12 wet       |
| fastness to light           | bright colours                 | 5                   | EN ISO 105-B02           |
| fastness to light           | dark colours                   | 5                   | EN ISO 105-B02           |
| composition                 | %100 polyester                 |                     |                          |

### typical product characteristics

Pigment bleed and colour abrasion may occur with dark and intensive colours. Pilling cannot be avoided and may also occur through the adhesion of fibres from other sources. All flat-woven fabrics may roughen in use and patina and glossy spots may occur. Pulled threads are to be expected if sharp objects catch in the fabric. Depending on the material, a slight striped effect may occur. Light colours will show soiling and jeans abrasion more quickly and clearly than darker colours. A minor loss of colour through exposure to UV rays is unavoidable, particularly with intensive colours. Minor variations in colour and texture between product lots are unavoidable and may occur.

### instructions for use

A certain degree of fading of the colours, due to exposure to light or abrasion through use over time, is also part of the nature of flat-woven fabrics. We do not take over a warranty on damage, which resulted from inappropriate use, chemical cleaning or additional impregnation.

### care instructions

You can help to maintain the original beauty of your covering fabric furniture by treating it carefully and caring for it properly. Please therefore heed the following recommendations:

- › Avoid exposing your brand new upholstered furniture to direct sunlight
- › Do not position your new upholstered furniture directly in front of heat sources.
- › Avoid contact between your upholstered furniture and rough clothing.
- › Remove inevitable dust and minor soiling through gentle vacuuming and using a soft upholstery nozzle.

### cleaning

Do not use any abrasive detergents that could damage your new covering fabric. Any stains should be dabbed immediately with a cotton cloth and cleaned in a circular motion working from the outside in. Test any cleaning products on a hidden area first to ascertain their compatibility.



# chateau.

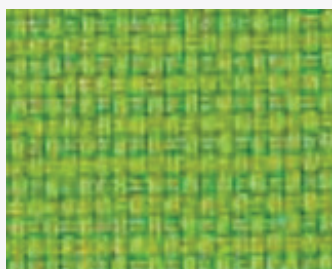
class.A

supplier. camira

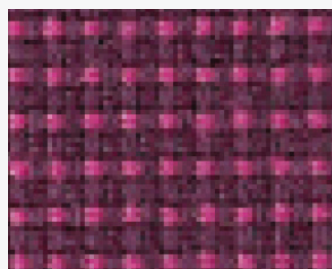
origin. england

type. fabric

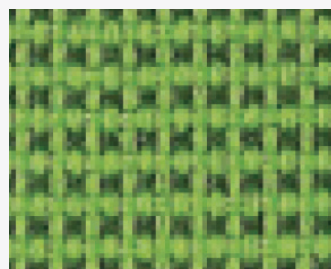
fire-reterdant



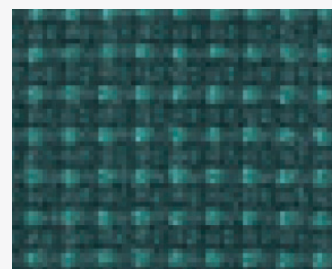
chantilly **csp28**



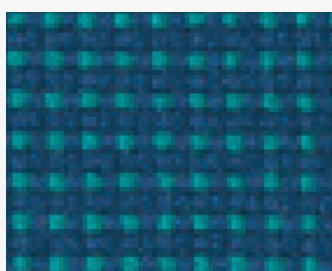
rideau **csp33**



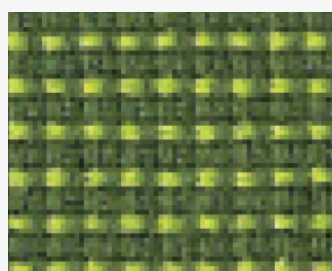
tarascon **csp29**



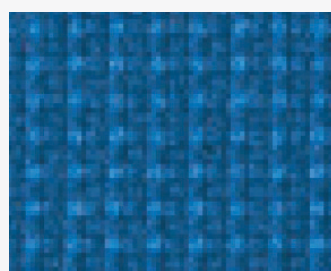
motte **csp14**



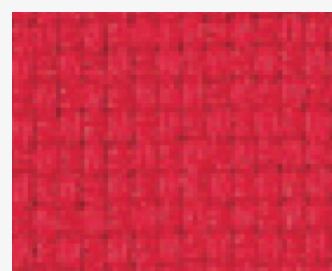
biron **csp15**



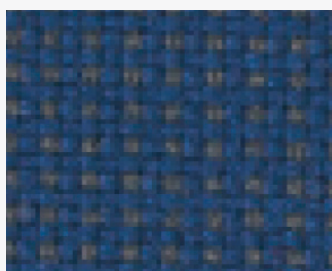
vincennes **csp31**



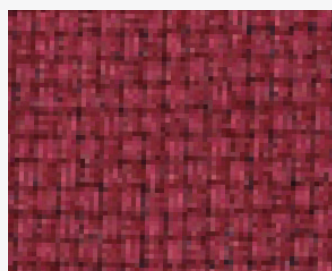
chinon **csp09**



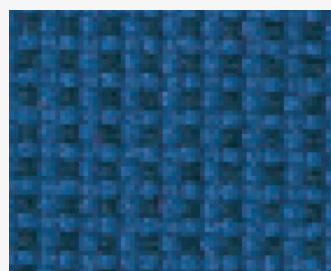
martet **csp42**



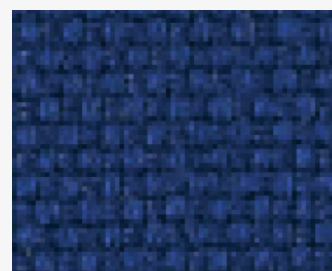
touvet **csp12**



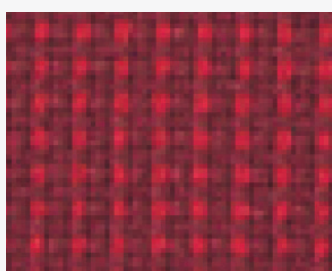
divonne **csp47**



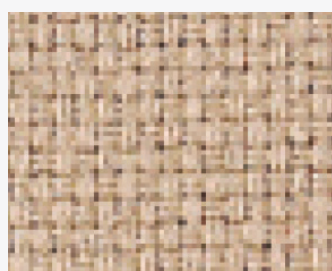
bonpas **csp11**



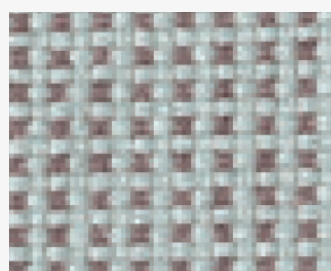
bellay **csp51**



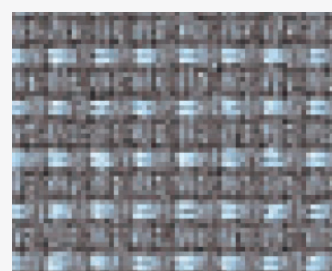
dollard **csp07**



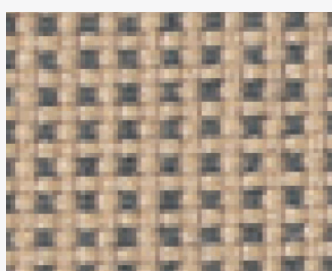
mombet **csp23**



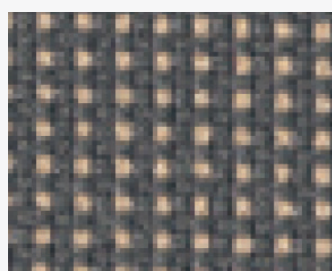
losse **csp36**



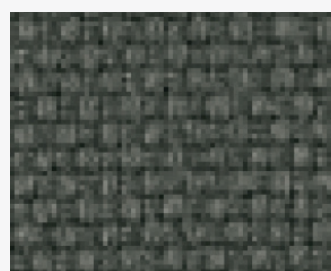
perigord **csp38**



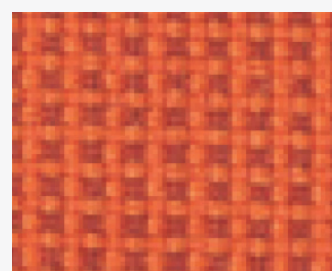
pomerol **csp01**



medoc **csp02**



belcaire **csp43**



brissac **csp03**

# chateau.

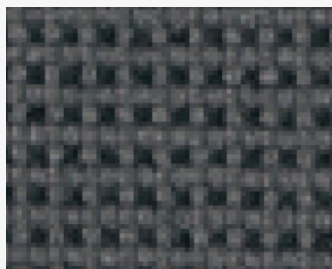
class.A

**supplier.** camira

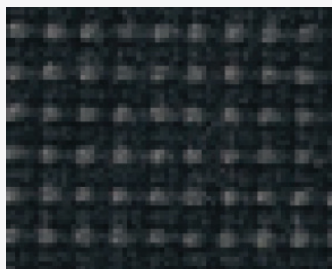
**origin.** england

**type.** fabric

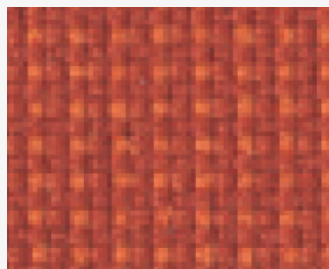
fire-reterdant



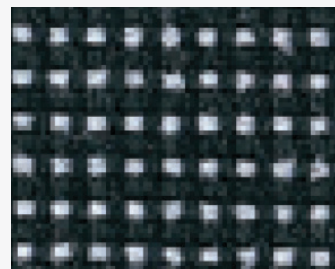
palice **csp19**



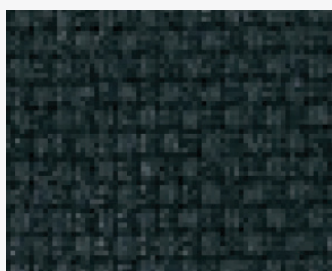
hazrville **csp20**



noizay **csp04**



trianons **csp39**



beauvois **csp48**

# chateau.

class.A

## product specifications

| Technical Informations | Unit                               | Value                          | Test Method   |
|------------------------|------------------------------------|--------------------------------|---|
| weight                 | gr. / m <sup>2</sup>               | 250g ±5%<br>(350g / lin.m ±5%) | -   |
| width                  | mm                                 | 140                            | -   |
| abrasion resistance    | 5 year guarantee                   |                                | EN 14465:2003   |
| flammability           | -                                  | -                              | BS EN 1021 - 1:2006<br>BS EN 1021 - 2:2006BS<br>7176:2007 low hazard<br>BS 5852:2006 Section 4<br>ignition source 5<br>BS 7176:2007<br>medium hazard<br>DIN 4102 B1<br>NF - P - 92 - 507 M1<br>UNI 8546 & UNI 9174 classe 1 |
| light fastness         | -                                  | 6                              | ISO 105 - B02:2013  |
| fastness to rubbing    | -                                  | wet: 4, dry: 4                 | ISO 105 - X12:2002  |
| composition            | 100% flame retardant polypropylene |                                |   |

### cleaning

Vacuum regularly. Wipe clean with a damp cloth or shampoo using proprietary upholstery shampoo.

\* Tested in accordance with BS EN 14465. Please note that seam performance is dependent on seam construction and needle and thread type. We recommend that appropriate sewing advice be taken.

### note

Batch to batch variations in shade may occur within commercial tolerances. We reserve the right to alter technical specifications without notice. The Unregistered Design Rights and the Copyright in all designs are the exclusive property of Camira Fabrics Limited.





# blend.

class.A

**supplier.** arti textile

**origin.** europe

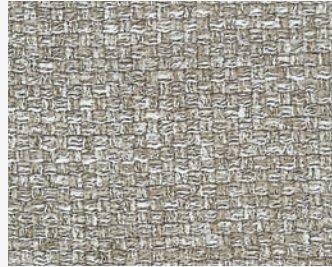
**type.** fabric

water repellent

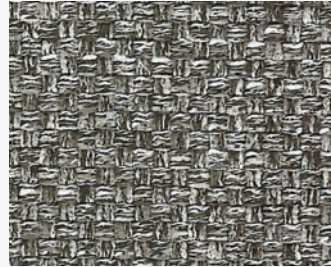
washable at 30°



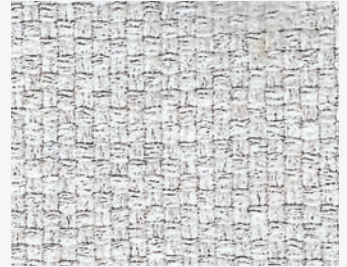
cream **11**



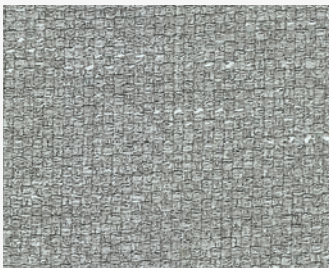
light grey **120**



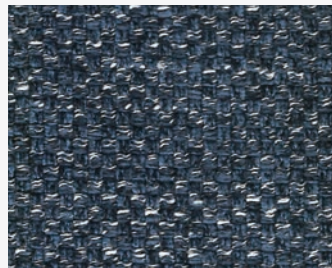
silver **121**



sahara **13**



stone **20**



chocolate **260**



red **32**



bamboo **430**



grey **45**



anthracite **46**



blackberry **550**



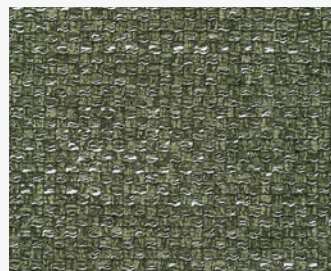
azure **705**



taupe **710**



anthracite **46**



blackberry **550**



azure **705**



taupe **710**



anthracite **46**



blackberry **550**



azure **705**

# blend.

class.A

## product specifications

| Technical Informations  | Unit                 | Value                | Test Method                               |
|-------------------------|----------------------|----------------------|---|
| weight                  | gr. / m <sup>2</sup> | 550g ±5%             | -   |
| width                   | cm                   | 140                  | -   |
| approximate roll length | m                    | 35 - 45              | ISO 12947 - 2 (martindale)                |
| finishing               | water repellent      |                      |   |
| abrasion resistance*    | giri                 | 30,000               | ISO 12947 - 2 (martindale)                |
| pilling test            | grado                | 4                    | ISO 12945 - 2<br>(martindale 5000 cycles) |
| flammability            | pass                 |                      | EN 1021 - 1 (cigarette)                   |
| seam slippage           | mm                   | weft 5,1<br>warp 4,3 | EN ISO 13936 - 2: 2004                    |
| tear strength           | N                    | weft 5,1<br>warp 4,3 | UNI EN ISO 13937 - 3: 2002                |
| light fastness          | -                    | 5                    | ISO 105 - B02                             |
| fastness to rubbing     | -                    | wet: 4, dry: 4/5     | ISO 105 - X12                             |
| composition             | 70% pl, 30% vi       |                      |   |



# santos.

class.A

supplier. arti textile  
origin. europe  
type. fabric



cream **11**



light grey **120**



silver **121**



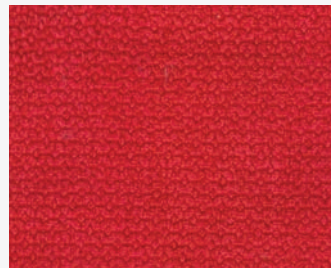
sahara **13**



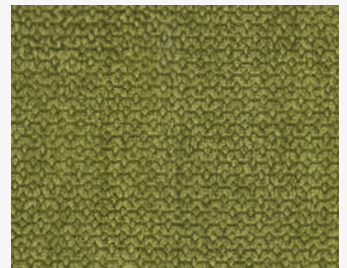
stone **20**



chocolate **260**



red **32**



bamboo **430**



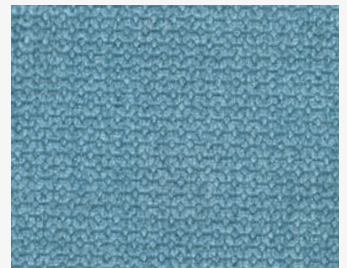
grey **45**



anthracite **46**



blackberry **550**



azure **705**



taupe **710**



# santos.

class.A

## product specifications

| Technical Informations  | Unit                 | Value                     | Test Method               |
|-------------------------|----------------------|---------------------------|---------------------------|
| weight                  | gr. / m <sup>2</sup> | 430g ±5%                  | DIN EN 12127              |
| width                   | cm                   | 145                       | -                         |
| approximate roll length | m                    | 45                        | -                         |
| abrasion resistance*    | martindale           | 50,000                    | ISO 12947 - 1, 2          |
| pilling test            | -                    | 4-5                       | ISO 12945 - 2<br>(2000 T) |
| tensile strength        | mm                   | weft 1867,3<br>warp 639,8 | EN ISO 13934-1            |
| seam slippage           | mm                   | weft 4,5<br>warp 3        | EN ISO 13936 - 2          |
| tear growth resistance  | N                    | weft 81,9<br>warp 125,5   | UNI EN ISO 13937 - 3      |
| light fastness          | -                    | 5                         | ISO 105 - B02             |
| fastness to rubbing     | -                    | wet: 4/5, dry: 5          | ISO 105 - X12             |
| composition             | 100% polyester       |                           |                           |

# nano soft.

class.A

supplier. arti textile

origin. europe

type. fabric

easy cleaning  
nanotechnology



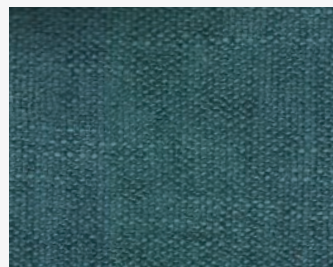
nature **01**



ivory **03**



camel **05**



blue **09**



light grey **120**



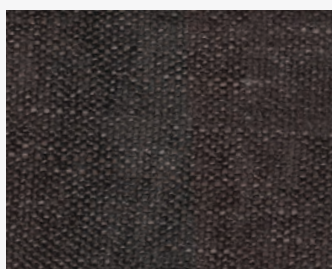
light brown **15**



black **17**



deep blue **1880**



espresso **210**



bamboo **430**



grey **45**



old grey **47**



ash grey **48**



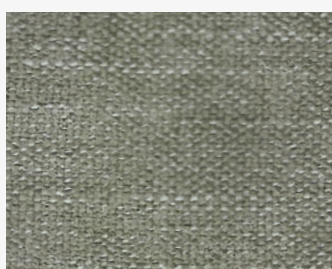
dark grey **484**



apple **610**



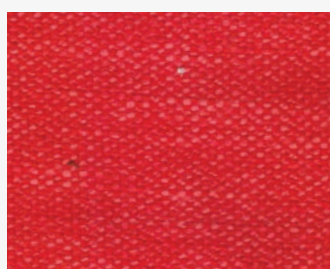
moon grey **710**



olive grey **750**



olive **751**



loud red **845**



clove **90**

# nano soft.

class.A

## product specifications

| Technical Informations  | Unit                       | Value                  | Test Method               |
|-------------------------|----------------------------|------------------------|---------------------------|
| weight                  | gr. / m <sup>2</sup>       | 510g ±5%               | DIN EN 12127              |
| width                   | cm                         | 145                    | -                         |
| approximate roll length | m                          | 50                     | -                         |
| abrasion resistance*    | martindale                 | 45,000                 | ISO 12947 - 1, 2          |
| pilling test            | -                          | 4                      | ISO 12945 - 2<br>(2000 T) |
| tensile strength        | mm                         | weft 1357<br>warp 1838 | EN ISO 13934-1            |
| seam slippage           | mm                         | weft 5<br>warp 3       | EN ISO 13936 - 2          |
| tear growth resistance  | N                          | weft 222<br>warp 143   | UNI EN ISO 13937 - 3      |
| light fastness          | -                          | 4/5                    | ISO 105 - B02             |
| fastness to rubbing     | -                          | wet: 4/5, dry: 4/5     | ISO 105 - X12             |
| composition             | 85% polyester, 15% viscose |                        |                           |



# renna.

class.B

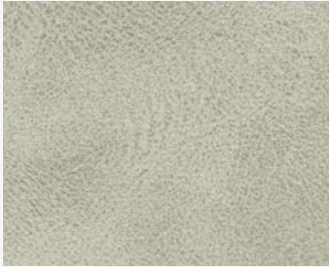
**supplier.** arti textile

**origin.** italy

**type.** fabric

fire-reterdant

easy cleaning



**0025**



**0061**



**0027**



**0050**



**0076**



**0084**



**0081**



**0020**



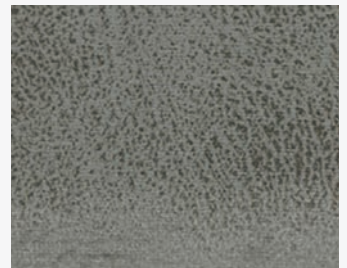
**0030**



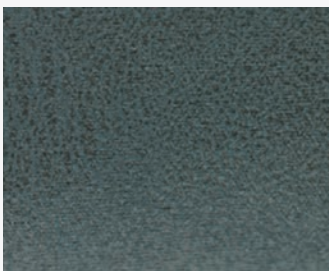
**0064**



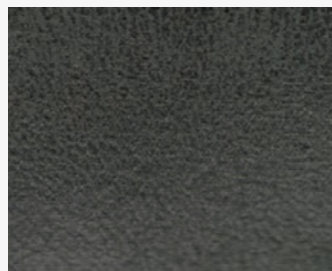
**0062**



**0032**



**0053**



**0104**



**0074**

# renna.

class.B

## product specifications

| Technical Informations        | Unit                 | Value      | Test Method    |
|-------------------------------|----------------------|------------|----------------|
| weight                        | gr. / m <sup>2</sup> | 490±5%     | -              |
| width                         | cm                   | 140        | -              |
| resistance to abrasion        | cycle                | >20.000    | EN ISO 12947-2 |
| pilling                       | -                    | 4          | ISO 12945-2    |
| dimension fastness to washing | weft<br>warp         | 30°C max 2 | ISO 12945-2    |
| colour fastness to rubbing    | dry<br>wet           | 4<br>3     | ISO 105 X 12   |
| xenotest                      | -                    | 4          | 105 - B02      |
| composition                   | 100 % pl             |            |                |

### product characteristics

Pigment bleed and colour abrasion may occur with dark and intensive colours. Pilling cannot be avoided and may also occur through the adhesion of fibres from other sources. All flat-woven fabrics may roughen in use and patina and glossy spots may occur. Pulled threads are to be expected if sharp objects catch in the fabric. Depending on the material, a slight striped effect may occur. Light colours will show soiling and jeans abrasion more quickly and clearly than darker colours. A minor loss of colour through exposure to UV rays is unavoidable, particularly with intensive colours. Minor variations in colour and texture between product lots are unavoidable and may occur.

### instructions for use

A certain degree of fading of the colours, due to exposure to light or abrasion through use over time, is also part of the nature of flat-woven fabrics. We do not take over a warranty on damage, which resulted from inappropriate use, chemical cleaning or additional impregnation.

### care instructions

You can help to maintain the original beauty of your covering fabric furniture by treating it carefully and caring for it properly. Please therefore heed the following recommendations:

- › Avoid exposing your brand new upholstered furniture to direct sunlight
- › Do not position your new upholstered furniture directly in front of heat sources.
- › Avoid contact between your upholstered furniture and rough clothing.
- › Remove inevitable dust and minor soiling through gentle vacuuming and using a soft upholstery nozzle.

### cleaning

Do not use any abrasive detergents that could damage your new covering fabric. Any stains should be dabbed immediately with a cotton cloth and cleaned in a circular motion working from the outside in. Test any cleaning products on a hidden area first to ascertain their compatibility.

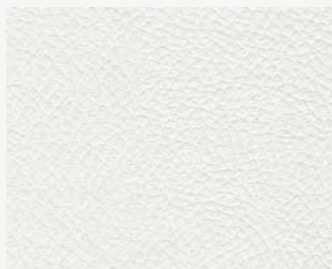
# koa furnisoft.

class.B

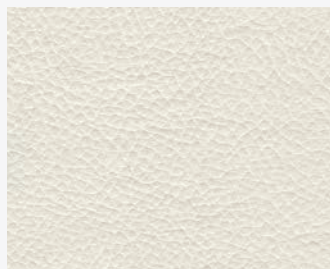
**supplier.** sertex  
**origin.** turkey  
**type.** artificial leather



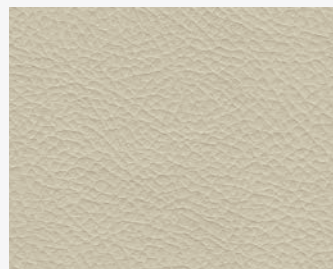
1



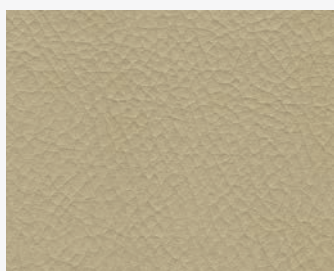
7



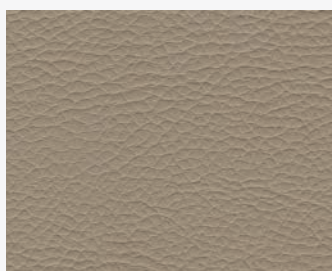
15



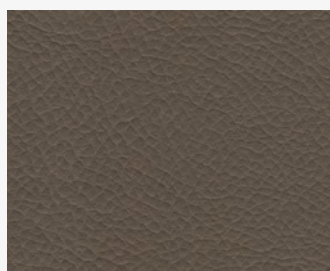
20



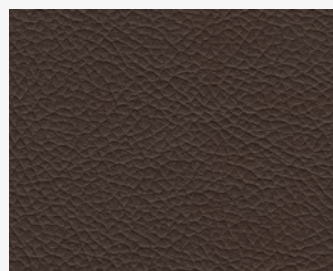
40



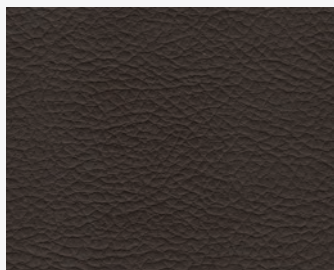
27



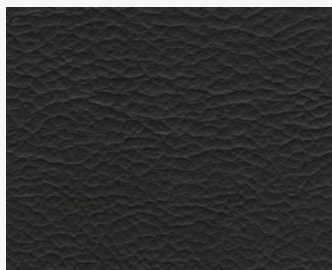
317



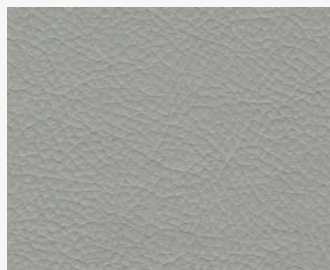
360



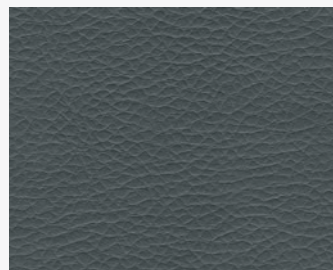
345



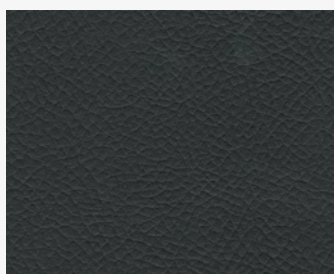
340



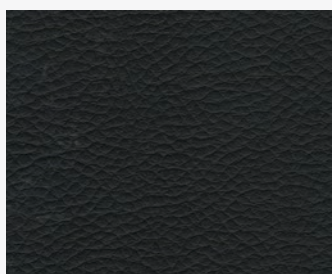
050



610



625



901



# koa furnisoft.

class.B

## product specifications

| Technical Informations    | Unit   | Value                                     | Test Method                |
|---------------------------|--|---|----------------------------|
| weight                    | gr. / m <sup>2</sup>                         | 480 ± 5%                                  | ISO 2286-2                 |
| thickness                 | mm   | 1,10 ±5%                                  | ISO 2286-3                 |
| tensile strenght          | n  | min. 400                                  | ISO 1421                   |
| tear strenght             | n  | min. 45                                   | ISO 4674-1                 |
| elongation at break       | %  | across 35 ± 5%<br>rlong 20 ± 5%           | ISO 1421                   |
| flexing endurance         | flx  | min. 100000                               | ISO 5402                   |
| abrasion resistance       | rub  | min. 40000                                | ISO 5470-2                 |
| color fastness to rubbing | gs   | min. 4                                    | ISO 105-X12                |
| light fastness            | bw   | light colors min. 3<br>dark colors min. 5 | ISO 105-B02<br>ISO 105-B02 |
| composition               | % 58 polyurethane % 28 polyester % 14 cotton |   |                            |

"Azo-dyes, heavy metals, pesticides, pcp/tecpc, formaldehyde, pcb are within allowable limits in products due to Eko-tex standart 100.

In case of coffee, tea, etc spills: use an absorbent cloth or piece of paper. Do not rub! Allow the stain to be Absorbed until it is removed from the material surface. Rub very gently with a tissue paper applying gentle circular

Movements to remove any remaining humidity.

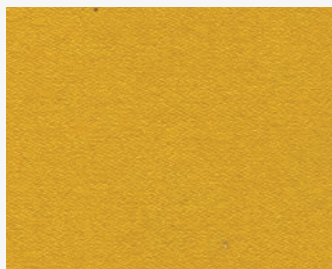
In case of dust: To remove dust, it is advisable to use a vacuum cleaner or a soft brush. Protect from direct sunlight. Do not clean with bleach or alcohol.

"Valid for all colors. (Red colors may have less color fastness to rubbing)"

# oslo.

class.B

supplier. alya  
origin. turkey  
type. fabric



114620



131580



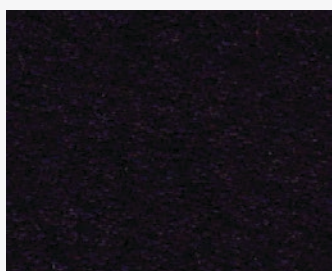
131547



85652



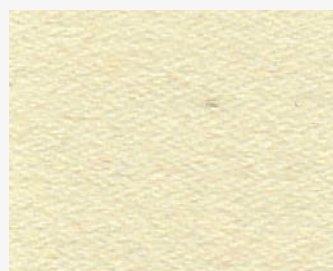
131577



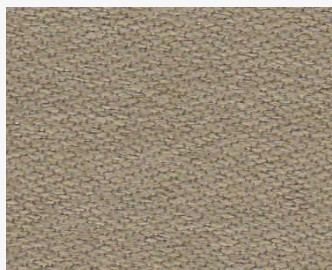
131533



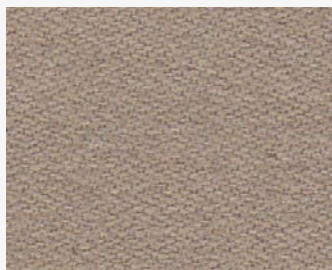
131575



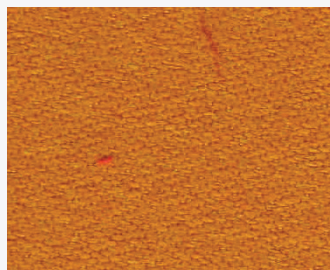
114619



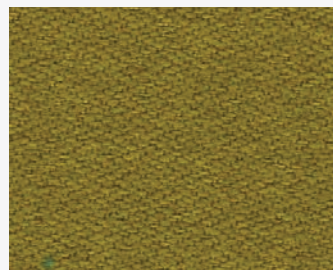
94976



131582



114621



114622



114616



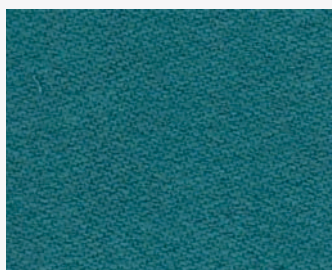
95742



95744



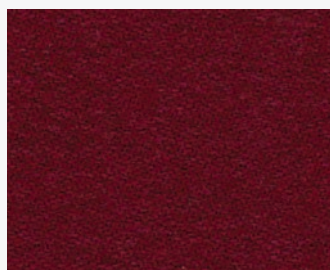
116613



114614



114615



131579

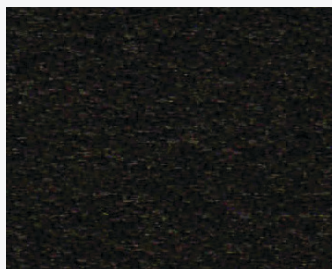


114617

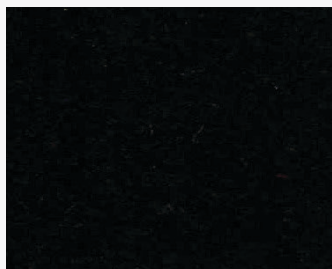
# oslo.

class.B

**supplier.** alya  
**origin.** turkey  
**type.** fabric



**114618**



**94982**



## product specifications

| Technical Informations   | Unit                 | Value     | Test Method          |
|--------------------------|----------------------|-----------|----------------------|
| weight                   | gr. / m <sup>2</sup> | 570       | -                    |
| width                    | cm                   | 142 (±2%) | -                    |
| resistance to abrasion   | N                    | 25000     | ISO 12947-2          |
| pilling                  | -                    | 4         | ISO 12945-2          |
| color fastness wet       | -                    | 4         | ISO-105-X12          |
| color fastness dry       | -                    | 4         | ISO-105-X12          |
| colour fastness of light | -                    | 4         | XENOTEST ISO 105/B02 |
| composition              | % 100 pes            |           |                      |

### product characteristics

Pigment bleed and colour abrasion may occur with dark and intensive colours. Pilling cannot be avoided and may also occur through the adhesion of fibres from other sources. All flat-woven fabrics may roughen in use and patina and glossy spots may occur. Pulled threads are to be expected if sharp objects catch in the fabric. Depending on the material, a slight striped effect may occur. Light colours will show soiling and jeans abrasion more quickly and clearly than darker colours. A minor loss of colour through exposure to UV rays is unavoidable, particularly with intensive colours. Minor variations in colour and texture between product lots are unavoidable and may occur.

### instructions for use

A certain degree of fading of the colours, due to exposure to light or abrasion through use over time, is also part of the nature of flat-woven fabrics. We do not take over a warranty on damage, which resulted from inappropriate use, chemical cleaning or additional impregnation.

### care instructions

You can help to maintain the original beauty of your covering fabric furniture by treating it carefully and caring for it properly. Please therefore heed the following recommendations:

- › Avoid exposing your brand new upholstered furniture to direct sunlight
- › Do not position your new upholstered furniture directly in front of heat sources.
- › Avoid contact between your upholstered furniture and rough clothing.
- › Remove inevitable dust and minor soiling through gentle vacuuming and using a soft upholstery nozzle.

### cleaning

Do not use any abrasive detergents that could damage your new covering fabric. Any stains should be dabbed immediately with a cotton cloth and cleaned in a circular motion working from the outside in. Test any cleaning products on a hidden area first to ascertain their compatibility.



# new king.

class.B

**supplier.** alya  
**origin.** turkey  
**type.** artificial leather



17565



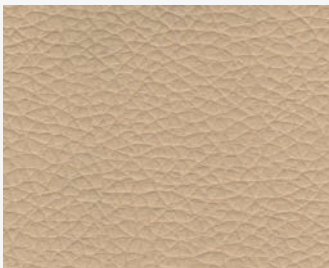
6



13717



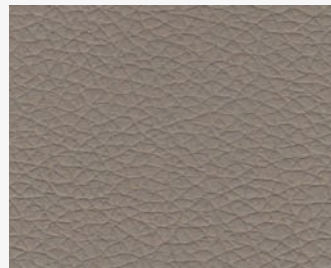
13742



13591



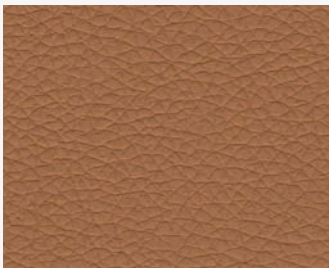
13743



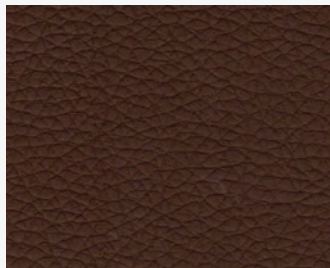
13719



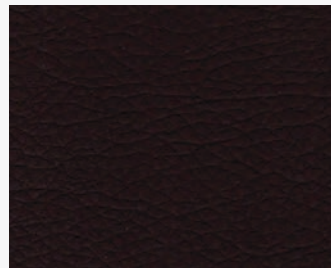
13723a



13721



13724b



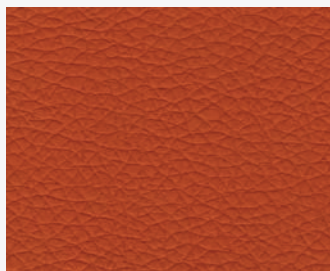
13725a



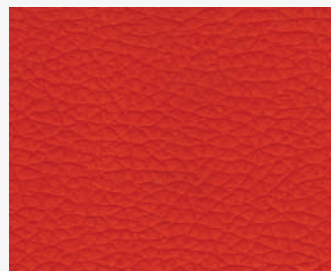
17561



13592



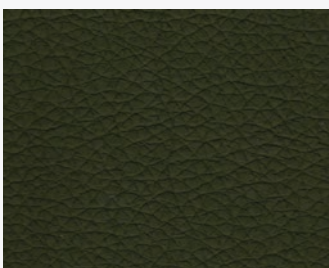
13722



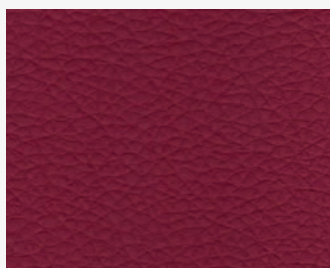
17562



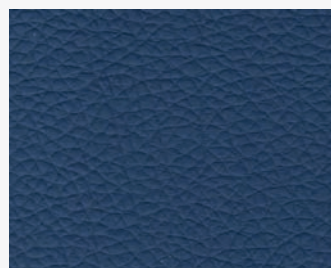
13822



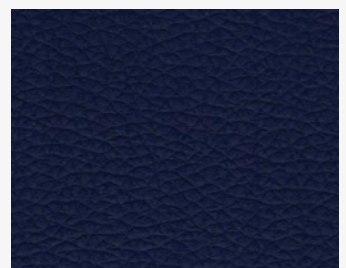
17563



13823



13824



17566

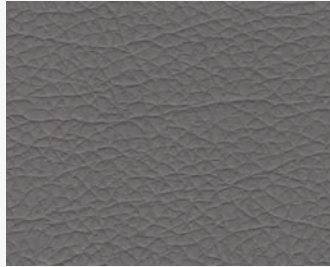
# new king.

class.B

**supplier.** alya  
**origin.** turkey  
**type.** artificial leather



**17567**



**17560**



**17568**



**13727**



# new king.

class.B

## product specifications

| Technical Informations   | Unit  | Value                         | Test Method   |
|--------------------------|---|-------------------------------|---|
| weight                   | gr. / m <sup>2</sup>                                      | 658 (±5)                      | TS 6450   |
| thickness                | mm  | 0,85 (±5)                     | ISO 2589  |
| width                    | cm  | 138 / 140                     | TS 4119   |
| roll meter               | mt  | 30                            | -   |
| resistance to abrasion   | martin dale   | 230.000                       | BS EN ISO 12947-2:1999&4:1999                             |
| bursting strength        | -   | > 600 kPa                     | BS EN ISO 5470-1:1999                                     |
| seam slippage resistance | 6 mm dikiş dayanımı                                       | çözgü > 250 N<br>atki > 250 N | BS 3320:1998 (geri alma)                                  |
| seam slippage resistance | 6 mm dikiş açılımı  | çözgü > 164.0 N<br>atki NF    | BS 3320:1998 (geri alma)                                  |
| elongation strenght      | -   | çözgü 5803 g<br>atki 2853 g   | BS EN ISO 4674-1:1999<br>pendulum textest<br>FX 3750:136N |
| colour fastness to light | grade 5 nolu mavi<br>yün skala 4'e göre<br>soldurulmuştur | 5                             | DIN EN ISO 105-B02:2002                                   |
| flammability-clothing    | -   | pass                          | BS 5852-1:1979  |
| composition              | % 76 pvc % 22 polyester % 2 PU                            |                               |   |

### product characteristics

Pigment bleed and colour abrasion may occur with dark and intensive colours. Pilling cannot be avoided and may also occur through the adhesion of fibres from other sources. All flat-woven fabrics may roughen in use and patina and glossy spots may occur. Pulled threads are to be expected if sharp objects catch in the fabric. Depending on the material, a slight striped effect may occur. Light colours will show soiling and jeans abrasion more quickly and clearly than darker colours. A minor loss of colour through exposure to UV rays is unavoidable, particularly with intensive colours. Minor variations in colour and texture between product lots are unavoidable and may occur.

### instructions for use

A certain degree of fading of the colours, due to exposure to light or abrasion through use over time, is also part of the nature of flat-woven fabrics. We do not take over a warranty on damage, which resulted from inappropriate use, chemical cleaning or additional impregnation.

### care instructions

You can help to maintain the original beauty of your covering fabric furniture by treating it carefully and caring for it properly. Please therefore heed the following recommendations:

- › Avoid exposing your brand new upholstered furniture to direct sunlight
- › Do not position your new upholstered furniture directly in front of heat sources.
- › Avoid contact between your upholstered furniture and rough clothing.
- › Remove inevitable dust and minor soiling through gentle vacuuming and using a soft upholstery nozzle.

### cleaning

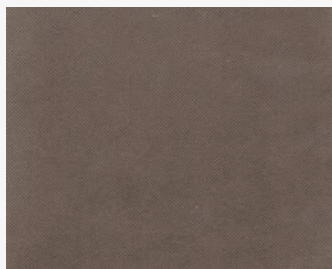
Do not use any abrasive detergents that could damage your new covering fabric. Any stains should be dabbed immediately with a cotton cloth and cleaned in a circular motion working from the outside in. Test any cleaning products on a hidden area first to ascertain their compatibility.



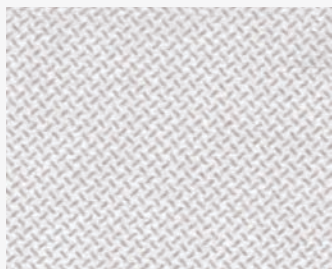
# deluxe.

class.B

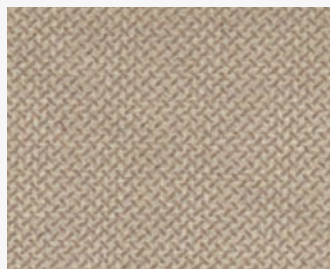
supplier. alya  
origin. italy  
type. fabric



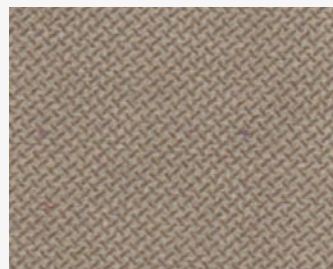
112



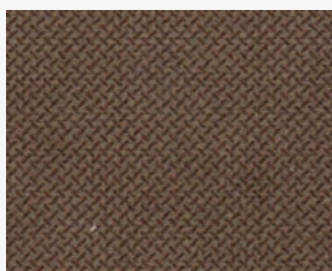
108



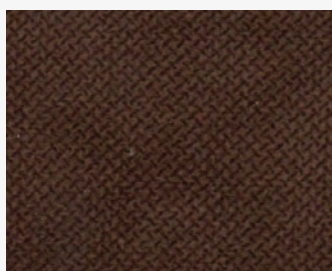
110



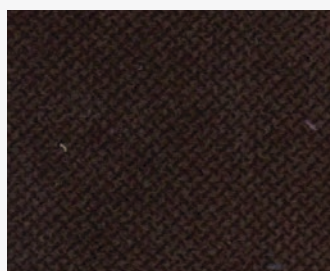
109



111



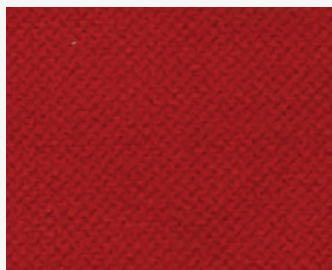
60



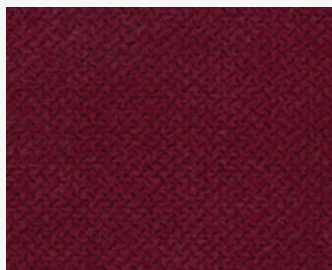
6



122



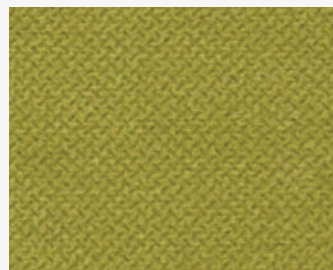
258



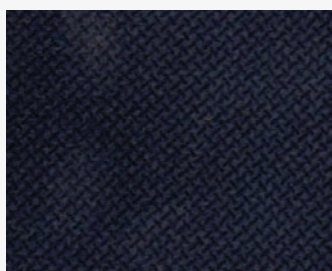
9



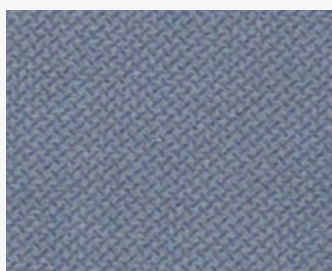
184



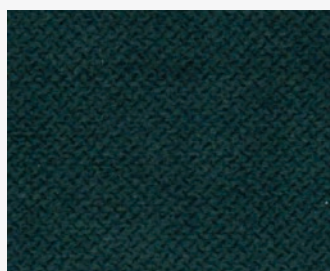
183



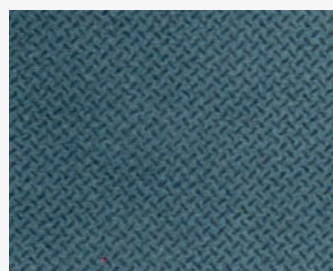
115



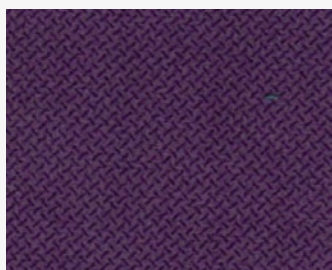
101



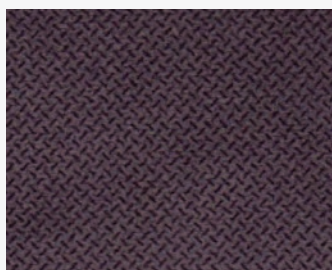
4



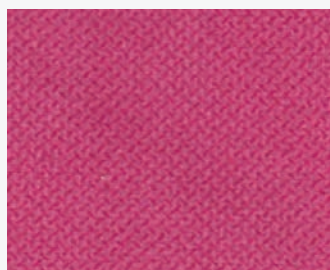
119



161



188



162



207

# deluxe.

class.B

**supplier.** alya  
**origin.** italy  
**type.** fabric



120



118



2



# deluxe.

## class.B

### product specifications

| Technical Informations      | Unit                 | Value                 | Test Method        |
|-----------------------------|----------------------|-----------------------|--------------------|
| weight                      | gr. / m <sup>2</sup> | 480                   | -                  |
| thickness                   | mm                   | -                     | -                  |
| width                       | cm                   | 140                   | -                  |
| roll meter                  | mt                   | 30                    | -                  |
| resistance to abrasion      | cycle                | 25000 12KPa end point | EN ISO 12947       |
| tensile strength            | N                    | -                     | -                  |
| tear strenght               | N                    | -                     | -                  |
| resistance to seam slippage | mm                   | -                     | -                  |
| pilling                     | -                    | > 5                   | GRI 5000 ISO 12945 |
| colour fastness             | -                    | > 5                   | ISO 105 x 12       |
| washing shrinkage           | -                    | > 1%                  | -                  |
| colour fastness to light    | -                    | > 4 / 5               | XENON ISO 105 B02  |
| cigarette test              | -                    | -                     | -                  |
| composition                 | %100 polyester       |                       |                    |

#### product characteristics

Pigment bleed and colour abrasion may occur with dark and intensive colours. Pilling cannot be avoided and may also occur through the adhesion of fibres from other sources. All flat-woven fabrics may roughen in use and patina and glossy spots may occur. Pulled threads are to be expected if sharp objects catch in the fabric. Depending on the material, a slight striped effect may occur. Light colours will show soiling and jeans abrasion more quickly and clearly than darker colours. A minor loss of colour through exposure to UV rays is unavoidable, particularly with intensive colours. Minor variations in colour and texture between product lots are unavoidable and may occur.

#### instructions for use

A certain degree of fading of the colours, due to exposure to light or abrasion through use over time, is also part of the nature of flat-woven fabrics. We do not take over a warranty on damage, which resulted from inappropriate use, chemical cleaning or additional impregnation.

#### care instructions

You can help to maintain the original beauty of your covering fabric furniture by treating it carefully and caring for it properly. Please therefore heed the following recommendations:

- › Avoid exposing your brand new upholstered furniture to direct sunlight
- › Do not position your new upholstered furniture directly in front of heat sources.
- › Avoid contact between your upholstered furniture and rough clothing.
- › Remove inevitable dust and minor soiling through gentle vacuuming and using a soft upholstery nozzle.

#### cleaning

Do not use any abrasive detergents that could damage your new covering fabric. Any stains should be dabbed immediately with a cotton cloth and cleaned in a circular motion working from the outside in. Test any cleaning products on a hidden area first to ascertain their compatibility.

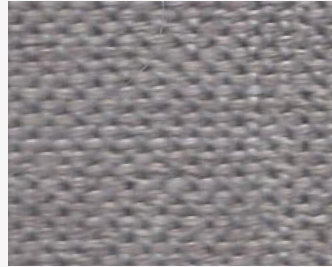
# victoria.

class.B

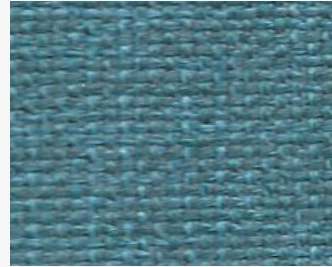
supplier. alya  
origin. turkey  
type. fabric



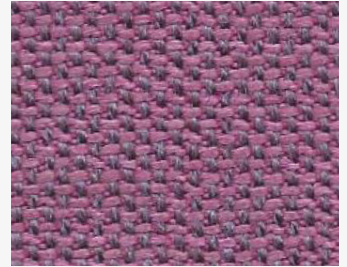
2228



138



1820



1616



101



102



113



125



136



137



124



1411



1412



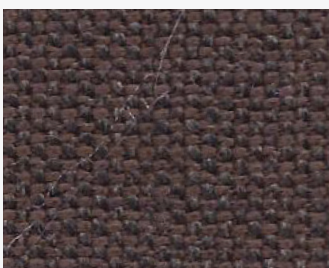
2330



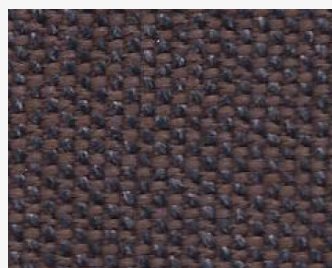
1922



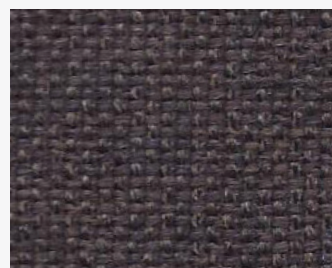
1923



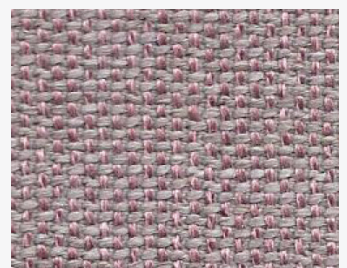
2024



2025



2126



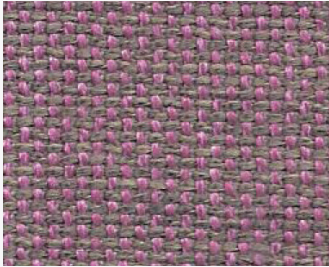
139



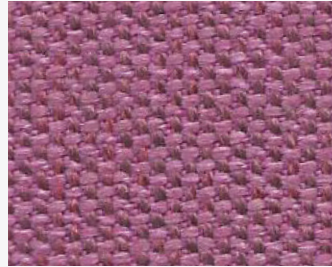
# victoria.

class.B

supplier. alya  
origin. turkey  
type. fabric



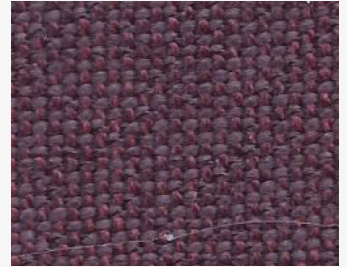
2331



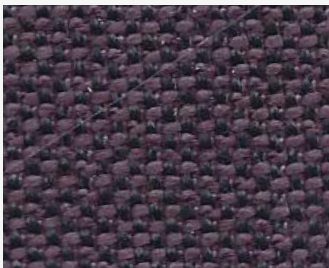
1615



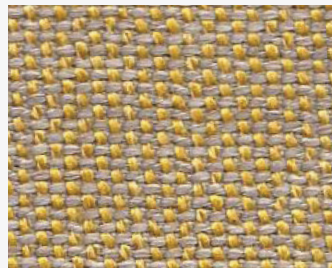
1718



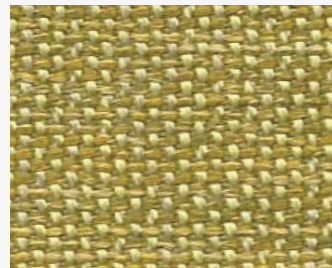
1717



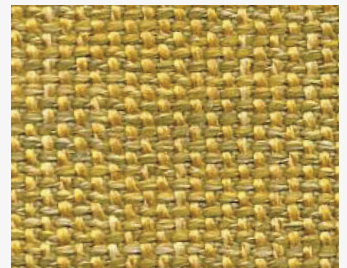
1719



126



2433



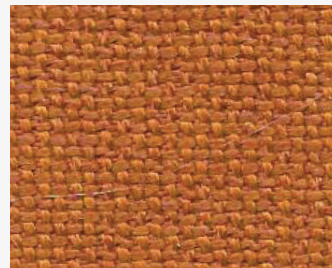
2432



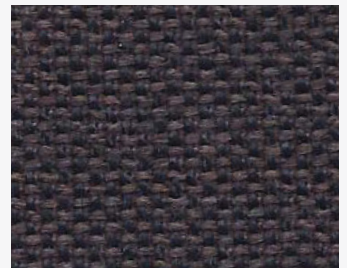
1821



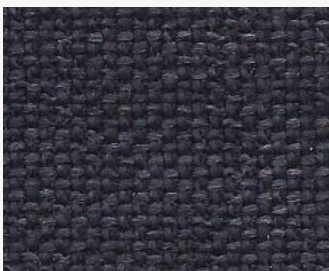
1514



1513



2127



2229



# victoria.

## class.B

### product specifications

| Technical Informations | Unit                 | Value  |
|------------------------|----------------------|--------|
| weight                 | gr. / m <sup>2</sup> | 400    |
| width                  | cm                   | 250    |
| roll meter             | mt                   | 60     |
| resistance to abrasion | cycle                | 32.000 |
| colour fastness        | -                    | 4-5    |
| pilling                | -                    | 4/5    |
| composition            | % 53.8 ac % 46.2 pes |        |

#### product characteristics

Pigment bleed and colour abrasion may occur with dark and intensive colours. Pilling cannot be avoided and may also occur through the adhesion of fibres from other sources. All flat-woven fabrics may roughen in use and patina and glossy spots may occur. Pulled threads are to be expected if sharp objects catch in the fabric. Depending on the material, a slight striped effect may occur. Light colours will show soiling and jeans abrasion more quickly and clearly than darker colours. A minor loss of colour through exposure to UV rays is unavoidable, particularly with intensive colours. Minor variations in colour and texture between product lots are unavoidable and may occur.

#### instructions for use

A certain degree of fading of the colours, due to exposure to light or abrasion through use over time, is also part of the nature of flat-woven fabrics. We do not take over a warranty on damage, which resulted from inappropriate use, chemical cleaning or additional impregnation.

#### care instructions

You can help to maintain the original beauty of your covering fabric furniture by treating it carefully and caring for it properly. Please therefore heed the following recommendations:

- › Avoid exposing your brand new upholstered furniture to direct sunlight
- › Do not position your new upholstered furniture directly in front of heat sources.
- › Avoid contact between your upholstered furniture and rough clothing.
- › Remove inevitable dust and minor soiling through gentle vacuuming and using a soft upholstery nozzle.

#### cleaning

Do not use any abrasive detergents that could damage your new covering fabric. Any stains should be dabbed immediately with a cotton cloth and cleaned in a circular motion working from the outside in. Test any cleaning products on a hidden area first to ascertain their compatibility.



# xtreme.

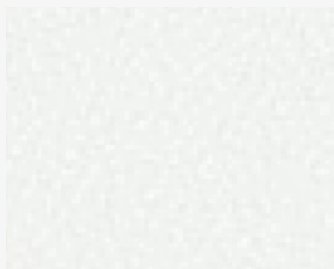
class.B

supplier. camira

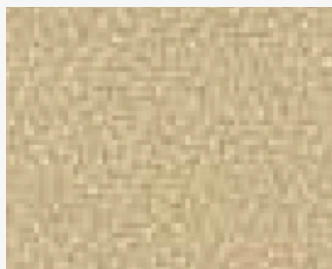
origin. england

type. fabric

fire-reterdant  
environmental



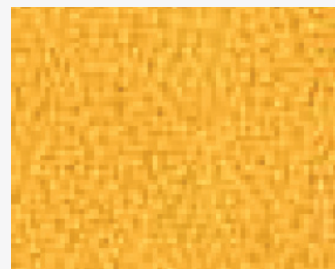
adobo **ys165**



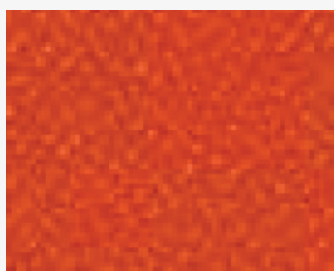
manado **ys166**



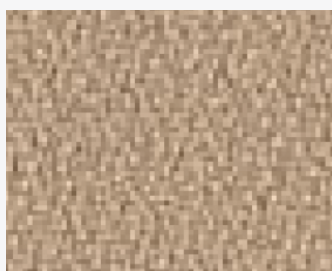
aruba **ys108**



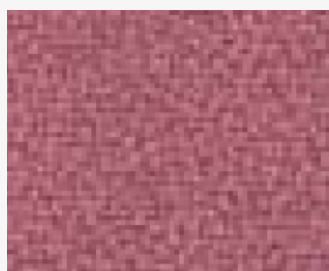
solano **ys072**



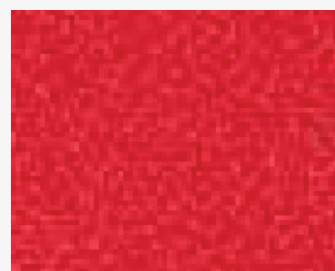
tortuga **ys168**



sandstorm **ys071**



bridgetown **ys102**



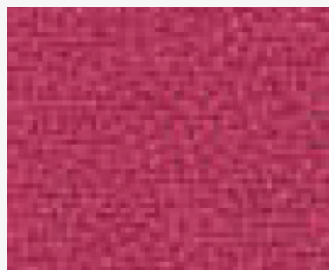
belize **ys105**



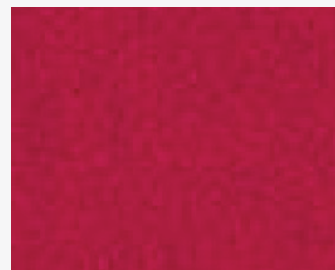
lobster **ys076**



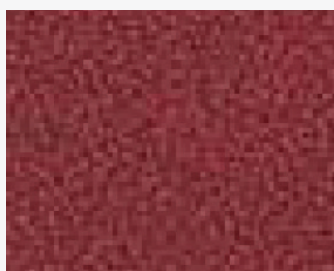
nougat **ys091**



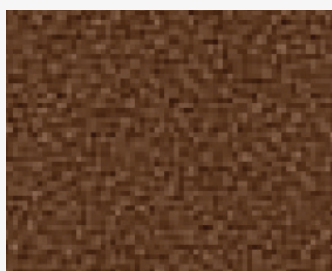
diablo **ys101**



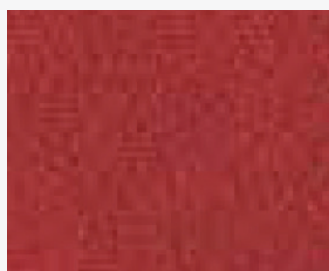
panama **ys079**



jamaica **ys027**



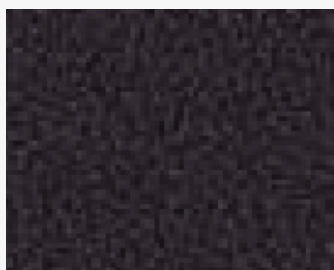
nicobar **ys158**



calypso **ys106**



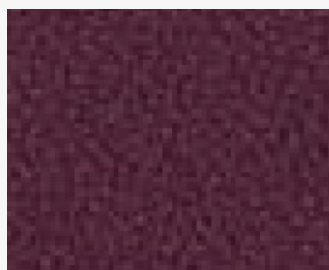
tokara **ys136**



bounty **ys086**



tarot **ys084**



tobago **ys030**



madura **ys156**

# xtreme.

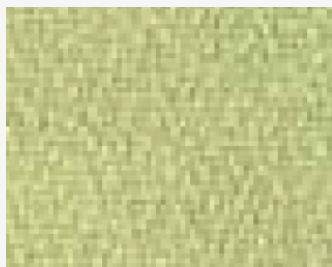
class.B

supplier. camira

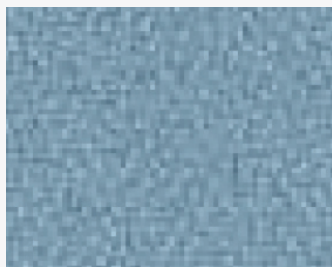
origin. england

type. fabric

fire-reterdant  
environmental



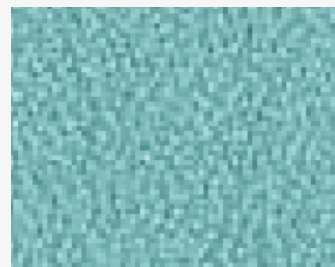
apple **ys096**



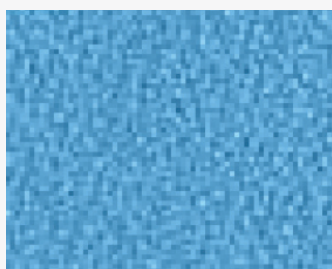
orchilla **ys167**



rum **ys173**



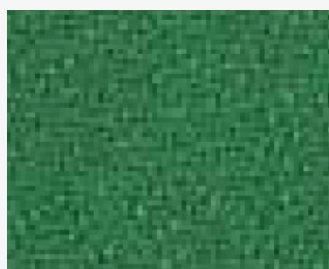
campeche **ys074**



parasol **ys073**



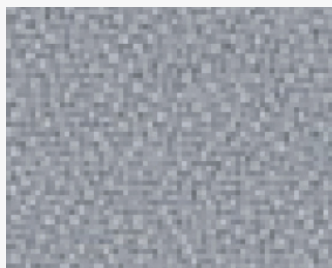
slip **ys094**



lombok **ys159**



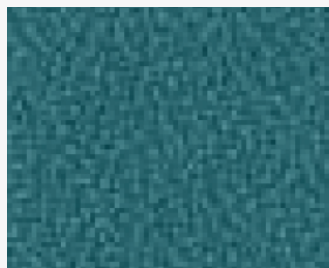
tonga **ys160**



buru **ys170**



blizzard **ys081**



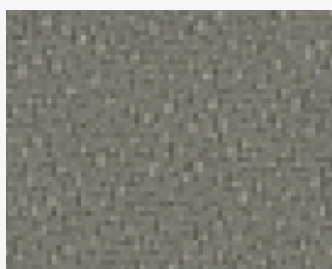
windjammer **ys047**



montserrat **ys011**



osumi **ys171**



krabi **ys141**



appledore **ys077**



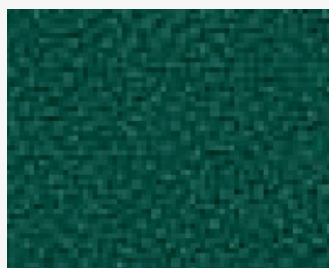
twister **ys083**



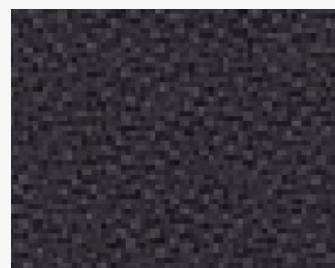
sombrero **ys046**



taboo **ys045**



flores **ys161**



bonaire **ys172**



# xtreme.

class.B

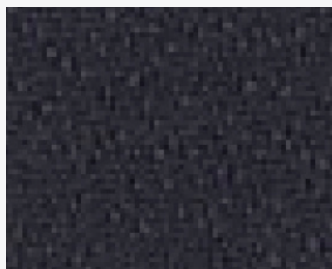
supplier. camira

origin. england

type. fabric

fire-reterdant

environmental



padang **ys145**



arecibo **ys174**



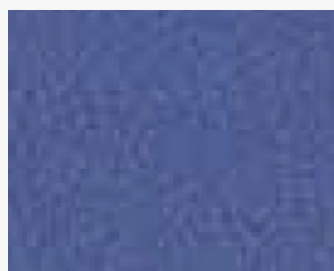
marianna **ys157**



anguilla **ys169**



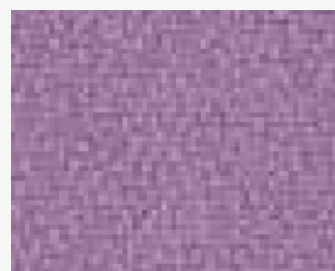
steel **ys095**



bluebell **ys097**



martinique **ys004**



mauve **ys069**



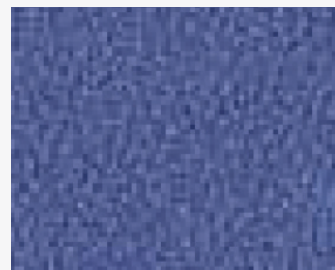
honeymoon **ys035**



scuba **ys082**



curacao **ys005**



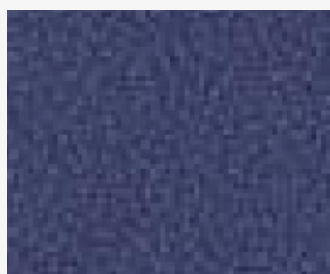
bluefield **ys021**



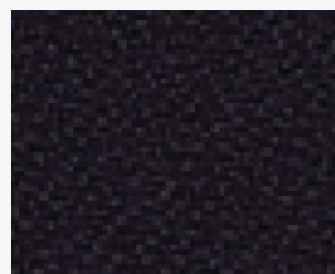
ocean **ys100**



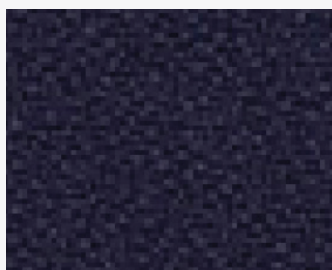
navassa **ys162**



cayman **ys024**



andaman **ys144**



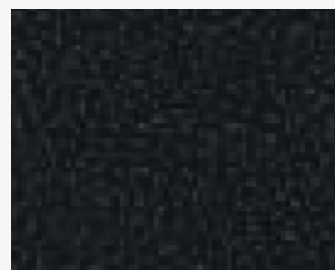
leeward **ys164**



arawak **ys016**



costa **ys026**



havana **ys009**

# xtreme.

## class.B

### product specifications

| Technical Informations | Unit  | Value   | Test Method  |
|------------------------|---|---|--|
| weight                 | gr. / m <sup>2</sup>                          | 310g / m <sup>2</sup> ±5%<br>(435g / lin.m ±5%) | -  |
| width                  | mm  | 140   | -  |
| abrasion resistance    | 10 year guarantee / 100,000 martindale cycles |   |  |
| flammability           | -   | -   | BS EN 1021 - 1:2014<br>BS EN 1021 - 2:2014<br>BS 7176:2007 low hazard<br>BS 5852:2006 section 4<br>ignition source 5<br>BS 7176:2007<br>medium hazard<br>DIN 4102 B1<br>UNI 8456 & UNI 9174 Classe 1 |
| light fastness         | -   | 6   | ISO 105 - B02:2014   |
| fastness to rubbing    | -   | wet: 4, dry: 4                                  | BS EN ISO 105 - X12:2002   |
| environmental          | rapidly renewable and compostable             |   |  |
| composition            | 100% recycled flame retardant polyester       |   |  |

#### cleaning

Washable to 60°C. Wipe clean with a damp cloth or shampoo using proprietary upholstery shampoo.  
Please note that seam performance is dependent on seam construction and needle and thread type. We recommend that appropriate sewing advice be taken.

#### note

Batch to batch variations in shade may occur within commercial tolerances. We reserve the right to alter technical specifications without notice. The Unregistered Design Rights and the Copyright in all designs are the exclusive property of Camira Fabrics Limited.



# x2.

class.B

supplier. camira

origin. england

type. fabric

fire-reterdant

environmental

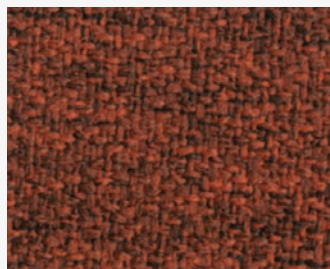
recycled



percentage **ak016**



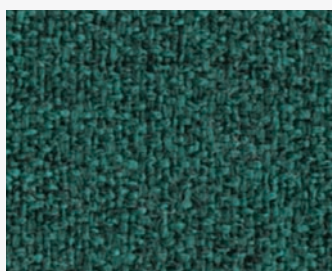
number **ak020**



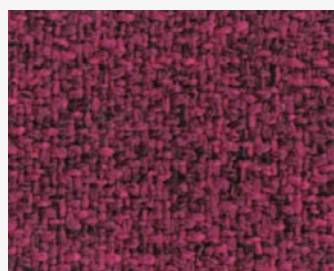
divide **ak015**



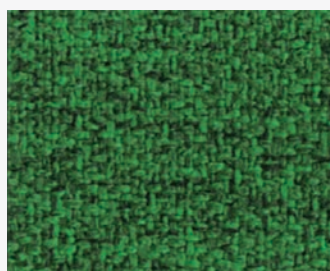
algebra **ak005**



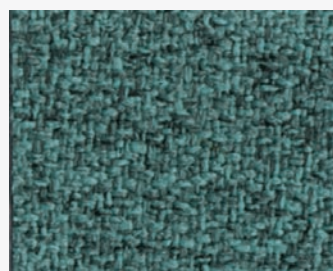
ratio **ak001**



subtract **ak013**



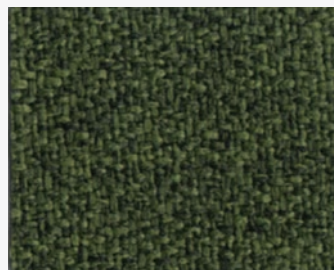
fraction **ak003**



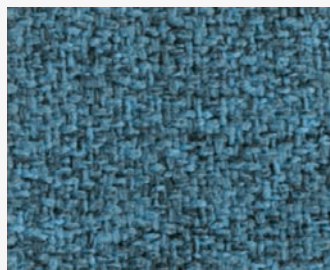
polygon **ak002**



multiply **ak014**



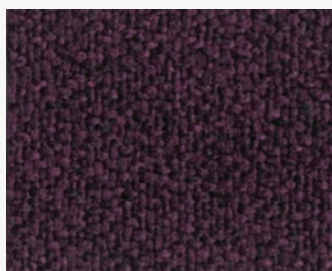
equation **ak004**



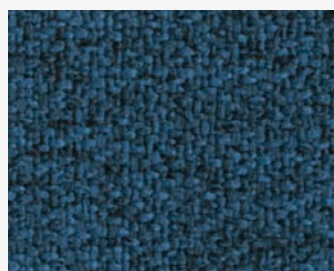
value **ak006**



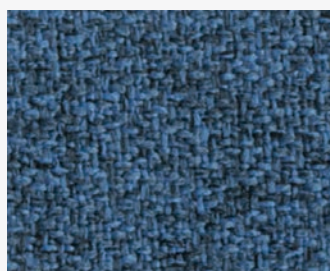
positive **ak019**



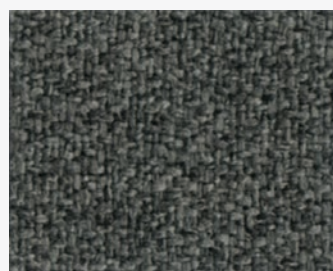
median **ak011**



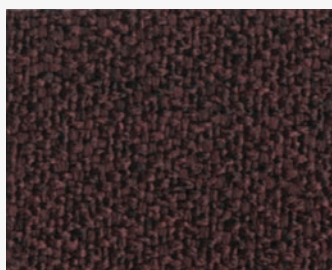
calculus **ak008**



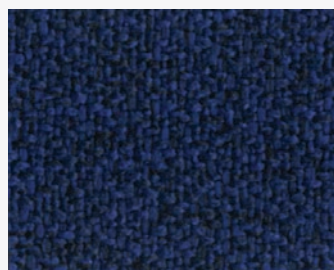
maths **ak007**



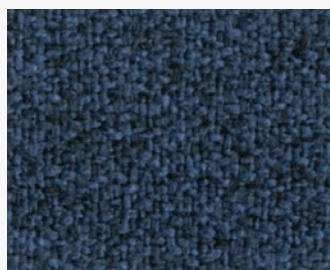
arithmetic **ak018**



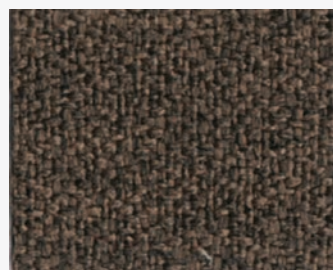
add **ak012**



metric **ak010**



acute **ak009**



formula **ak017**



# x2.

class.B

## product specifications

| Technical Informations | Unit   | Value   | Test Method  |
|------------------------|--|---|--|
| weight                 | gr. / m <sup>2</sup>                         | 310g / m <sup>2</sup> ±5%<br>(435g / lin.m ±5%) | -  |
| width                  | mm   | 140   | -  |
| abrasion resistance    | 5 year guarantee / 100,000 martindale cycles |   |  |
| flammability           | -  | -   | BS EN 1021 - 1:2014<br>BS EN 1021 - 2:2014<br>BS 5852:2006 section 4<br>ignition source 5<br>BS 7176:2007<br>medium hazard<br>DIN 4102 B1<br>NF D 60-013:2006<br>UNI 9175 1M |
| light fastness         | -  | 6   | ISO 105 - B02:2014   |
| fastness to rubbing    | -  | wet: 4, dry: 4                                  | BS EN ISO 105 - X12:2002   |
| environmental          | rapidly renewable and compostable            |   |  |
| composition            | 100% recycled flame retardant polyester      |   |  |

### cleaning

Washable to 60°C. Wipe clean with a damp cloth or shampoo using proprietary upholstery shampoo.

Please note that seam performance is dependent on seam construction and needle and thread type. We recommend that appropriate sewing advice be taken.

### note

Batch to batch variations in shade may occur within commercial tolerances. We reserve the right to alter technical specifications without notice. The Unregistered Design Rights and the Copyright in all designs are the exclusive property of Camira Fabrics Limited. Unregistered Design Rights and the Copyright in all designs are the exclusive property of Camira Fabrics Limited.



# vita.

class.B

**supplier.** camira  
**origin.** england  
**type.** artificial leather

fire-reterdant  
anti-microbial  
waterproof  
stain resistant



seal **ita01**



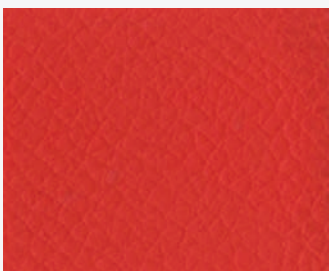
oatmeal **ita02**



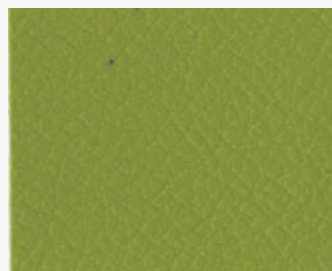
yellow **ita03**



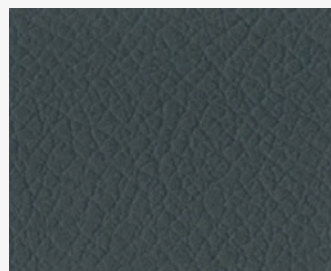
koala **ita04**



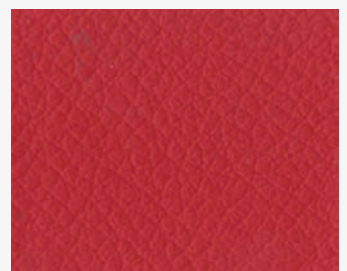
squash **ita05**



avocado **ita06**



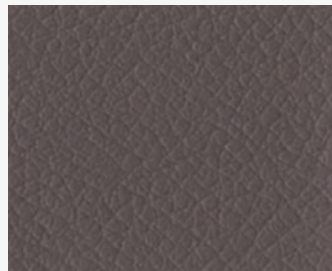
hippo **ita07**



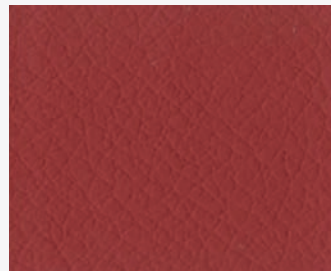
tomato **ita08**



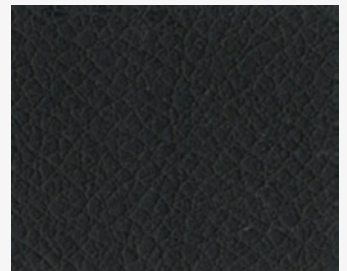
olive **ita09**



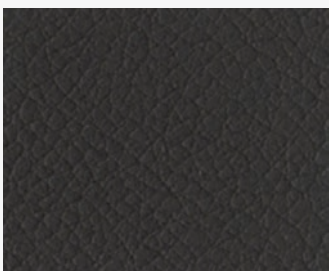
taupe **ita10**



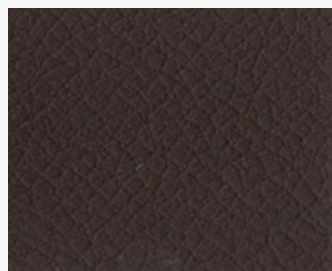
rust **ita11**



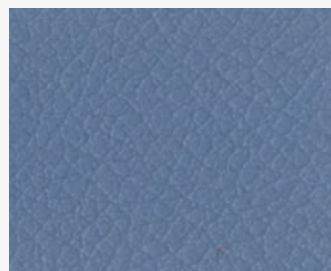
noir **ita12**



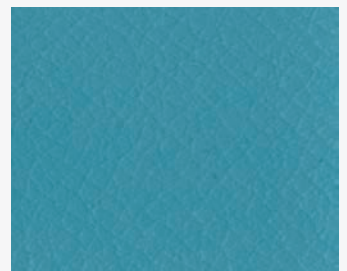
americano **ita13**



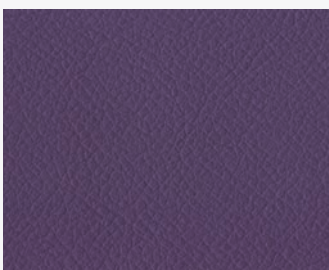
espresso **ita14**



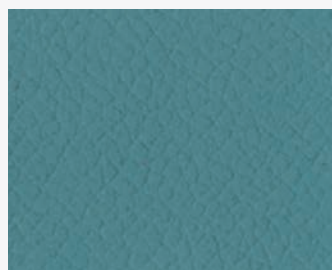
porcelain **ita15**



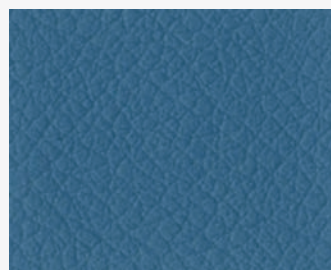
sapphire **ita16**



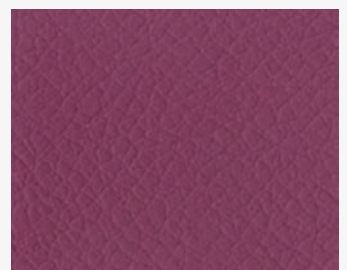
amethyst **ita17**



waterfall **ita18**



peacock **ita19**



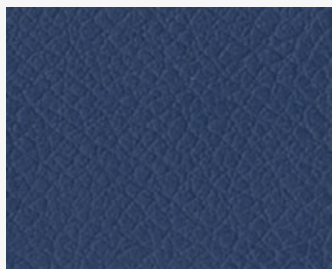
pink **ita20**

# vita.

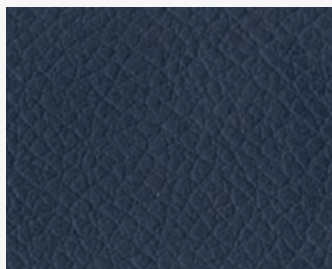
class.B

**supplier.** camira  
**origin.** england  
**type.** artificial leather

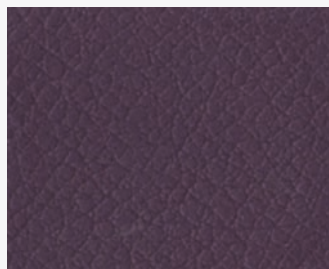
fire-reterdant  
anti-microbial  
waterproof  
stain resistant



marina **ita21**



navy **ita22**



plum **ita23**



## product specifications

| Technical Informations       | Unit   | Value                             | Test Method  |
|------------------------------|--|-----------------------------------|--|
| weight                       | gr. / m <sup>2</sup>   | 850g ±10%<br>(1190g / lin.m ±10%) | -  |
| width                        | mm   | 140                               | -  |
| abrasion resistance          | 5 year guarantee / 100,000 martindale cycles                       |                                   | BS EN ISO 5470-2:2003  |
| flexes                       | 5 year guarantee / 100,000 400,000 flexing cycles                  |                                   | BS EN ISO 7854: 1997   |
| flammability                 | -  | -                                 | BS EN 1021 - 1:2014<br>BS EN 1021 - 2:2014<br>BS EN 7176: 2007 low hazard<br>BS 5852:2006 Section 4<br>Ignition Source 5<br>BS 7176:2007<br>medium hazard<br>NF P 92-503 M2<br>FMVSS 302 ( ISO 3795)<br>FAR/JAR 25:853<br>ECE regulation No. 118 |
| light fastness               | -  | 6                                 | BS EN ISO 105 - B02:2014   |
| lot light fastness           | -  | 7                                 | BS EN ISO 105 - B06:2004   |
| fastness to rubbing          | -  | wet: 4, dry: 4                    | BS EN ISO 105 - X12:2002   |
| bleach cleanable             | -  | -                                 | BS EN ISO E03<br>colour change 4 for<br>10% chlorine solution  |
| urea resistance              | -  | -                                 | BS 3424  |
| residual extension           | -  | -                                 | BS EN ISO 14704-1: 2005  |
| anti-microbial / anti-fungal | -  | -                                 | AATCC 147:2011   |
| phthalate free               | -  | -                                 | BS EN 15777: 2009  |
| composition                  | surface: 98.5% pvc, 1.5% pu<br>substrate: 50% polyester 50% cotton |                                   |  |

### reach

Contains no heavy metals or Dimethyl Formamide

### cleaning

Wipe with a damp cloth and warm soapy water. Improved resistance to alcohol but avoid regular use and remove residue where possible. For full details, see vinyl technical guide.

### note

Batch to batch variations in shade may occur within commercial tolerances. We reserve the right to alter technical specifications without notice. The Unregistered Design Rights and the Copyright in all designs are the exclusive property of Camira Fabrics Limited.

# urban.

class.B

**supplier.** camira

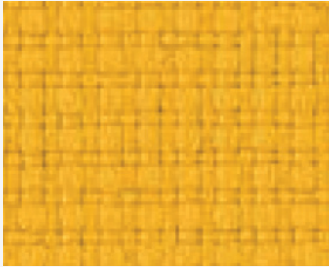
**origin.** england

**type.** fabric

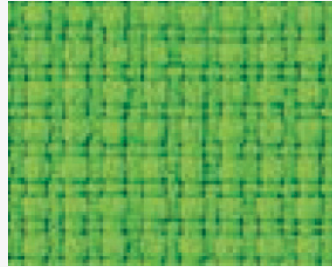
fire-reterdant

environmental

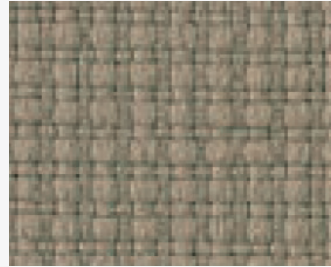
recycled



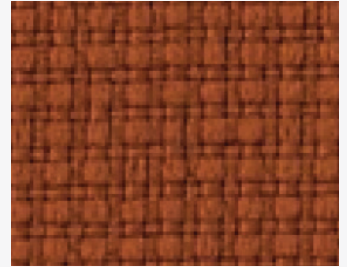
avenue **yn148**



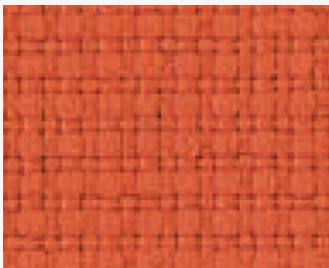
uptown **yn200**



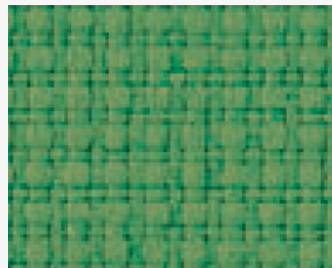
district **yn212**



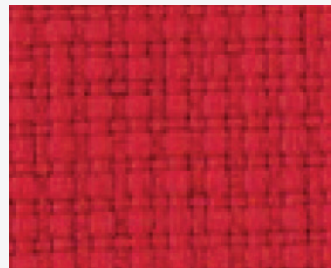
precinct **yn027**



highrise **yn076**



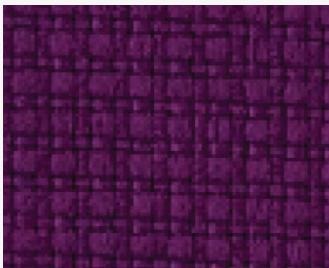
suburbia **yn159**



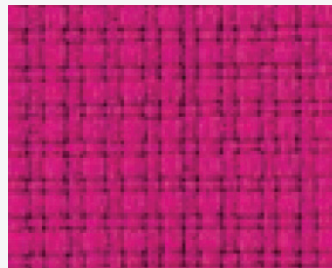
congestion **yn079**



downtown **yn190**



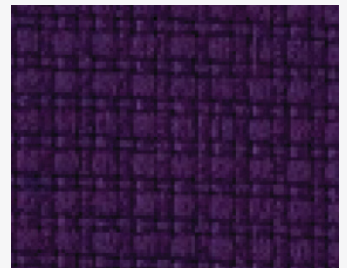
graffiti **yn204**



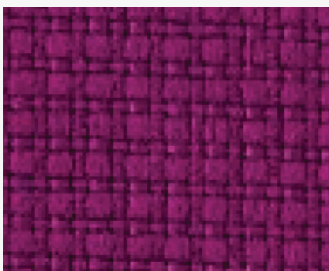
cosmopolitan **yn203**



bench **yn091**



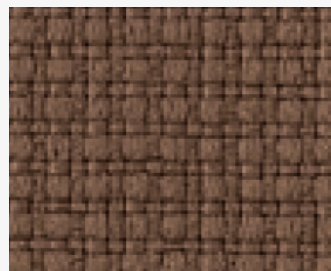
intersection **yn205**



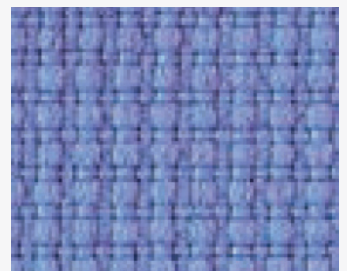
freeway **yn211**



loft **yn201**



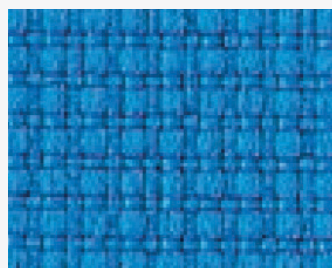
bedsit **yn158**



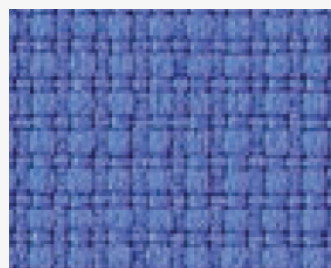
metropolis **yn097**



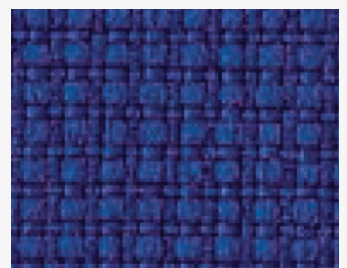
living **yn108**



penthouse **yn202**



ringroad **yn208**



conurbation **yn082**

# urban.

class.B

**supplier.** camira

**origin.** england

**type.** fabric

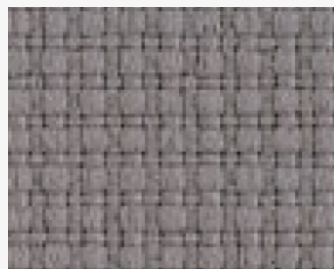
fire-reterdant

environmental

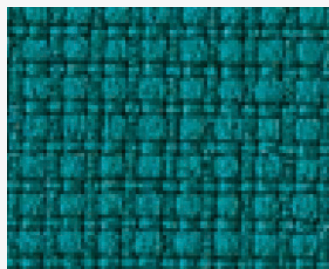
recycled



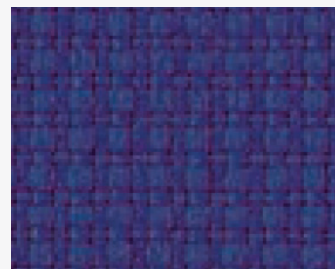
sidewalk **yn094**



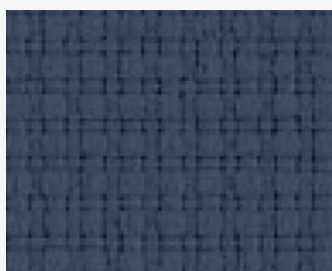
curb **yn206**



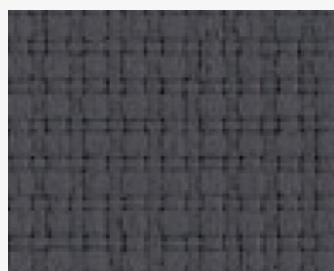
boulevard **yn160**



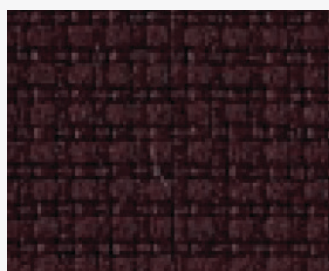
streetsmart **yn209**



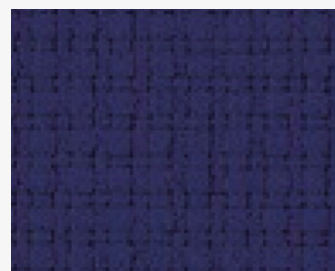
junction **yn083**



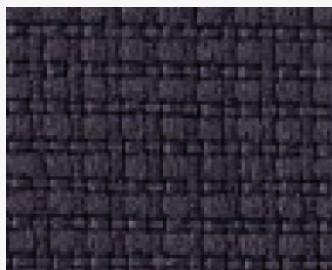
square **yn207**



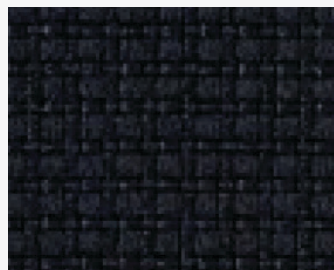
innercity **yn086**



nightowl **yn210**



underground **yn145**



subway **yn009**



# urban.

## class.B

### product specifications

| Technical Informations | Unit   | Value                          | Test Method  |
|------------------------|--|--------------------------------|--|
| weight                 | gr. / m <sup>2</sup>                         | 320g ±5%<br>(450g / lin.m ±5%) | -  |
| width                  | mm   | 140                            | -  |
| abrasion resistance    | 5 year guarantee / 100,000 martindale cycles |                                |  |
| flammability           | -  | -                              | BS EN 1021 - 1:2006<br>BS EN 1021 - 2:2006<br>BS 7176:2007 low hazard<br>BS 5852:2006 section 4<br>ignition source 5<br>BS 7176:2007<br>medium hazard<br>DIN 4102 B1<br>NF D 60-013 : 2006<br>NF - P - 92 - 507 M1<br>UNI 8456 & UNI 9174 Classe 1 |
| light fastness         | -  | 6                              | ISO 105 - B02:2013   |
| fastness to rubbing    | -  | wet: 4, dry: 4                 | ISO 105 - X12:2002   |
| composition            | 100% recycled flame retardant polyester      |                                |  |

#### cleaning

Washable to 60°C. Wipe clean with a damp cloth or shampoo using proprietary upholstery shampoo.

\* Tested in accordance with BS EN 14465. Please note that seam performance is dependent on seam construction and needle and thread type. We recommend that appropriate sewing advice be taken.

#### note

Batch to batch variations in shade may occur within commercial tolerances. We reserve the right to alter technical specifications without notice. The Unregistered Design Rights and the Copyright in all designs are the exclusive property of Camira Fabrics Limited.



# era.

class.B

supplier. camira  
origin. england  
type. fabric



futurist **cse01**



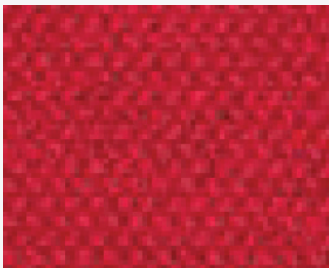
generation **cse02**



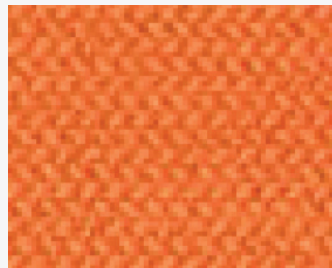
lifetime **cse03**



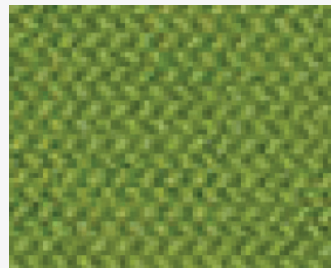
period **cse07**



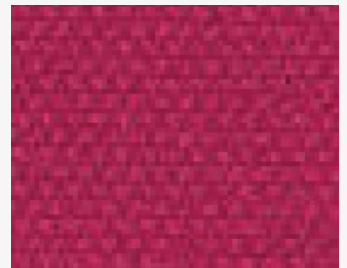
cycle **cse06**



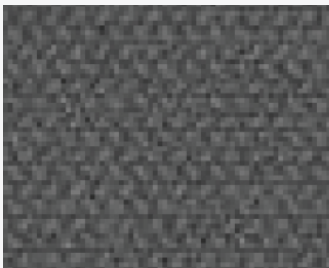
span **cse05**



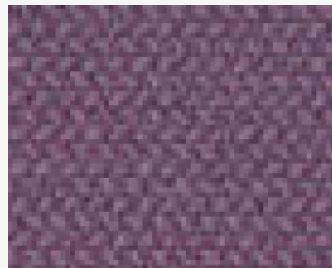
timelapse **cse16**



phase **cse17**



history **cse21**



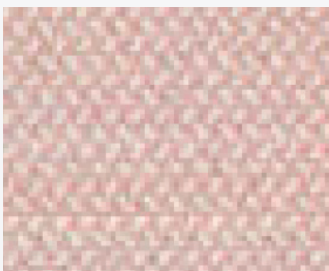
prime **cse09**



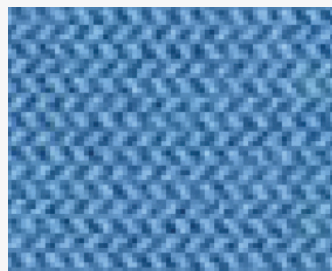
event **cse18**



aeon **cse20**



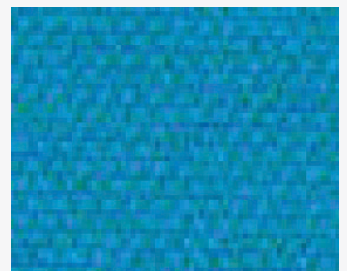
calendar **cse19**



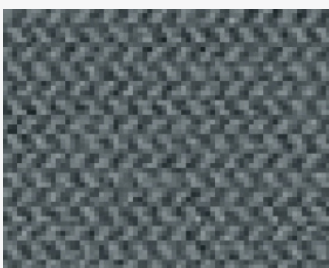
chapter **cse08**



forecast **cse11**



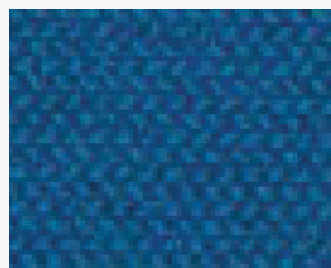
everlasting **cse10**



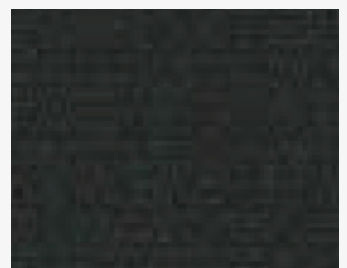
present **cse13**



stage **cse15**



perennial **cse12**



forward **cse14**

## product specifications

| Technical Informations | Unit   | Value                               | Test Method   |
|------------------------|--|-------------------------------------|---|
| weight                 | gr. / m <sup>2</sup>                         | 320g / m2 ±5%<br>(450g / lin.m ±5%) | -   |
| width                  | mm   | 140                                 | -   |
| abrasion resistance    | 5 year guarantee / 100,000 Martindale cycles |                                     |   |
| flammability           | -  | -                                   | BS EN 1021 - 1:2014<br>BS EN 1021 - 2:2014<br>BS 7176:2007 low hazard |
| light fastness         | -  | 5                                   | ISO 105 - B02:2014  |
| fastness to rubbing    | -  | wet: 4, dry: 4                      | ISO 105 - X12:2002  |
| composition            | 100% Polyester                               |                                     |   |

### cleaning

Vacuum regularly. Professionally dry clean or wipe clean with a damp cloth.

Please note that seam performance is dependent on seam construction and needle and thread type. We recommend that appropriate sewing advice be taken.

### note

Batch to batch variations in shade may occur within commercial tolerances. We reserve the right to alter technical specifications without notice. The Unregistered Design Rights and the Copyright in all designs are the exclusive property of Camira Fabrics Limited.



# main line flax.

class.C

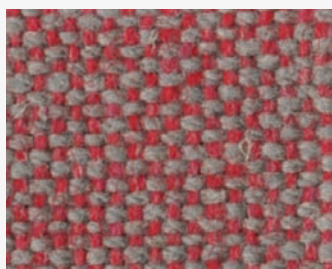
supplier. camira

origin. england

type. fabric

fire-reterdant

environmental



barbican **mlf03**



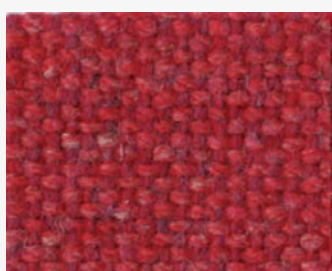
lambeth **mlf08**



kensington **mlf07**



upminster **mlf20**



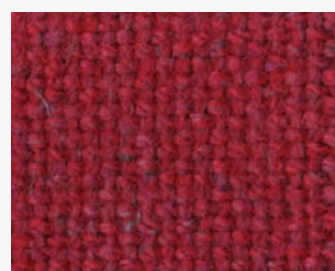
aldgate **mlf01**



leyton **mlf13**



finsbury **mlf30**



kilburn **mlf06**



tooting **mlf17**



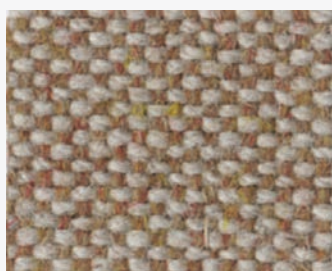
goldhawk **mlf31**



archway **mlf02**



parsons **mlf14**



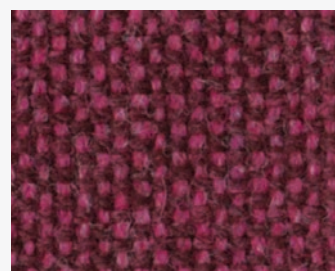
mordon **mlf12**



camden **mlf26**



paddington **mlf39**



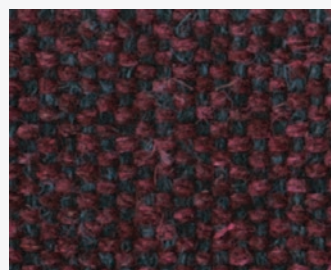
wembley **mlf11**



euston **mlf04**



bank **mlf23**



northfields **mlf40**



hillington **mlf41**



# main line flax.

class.C

supplier. camira

origin. england

type. fabric

fire-reterdant

environmental



stockwell **mlf15**



newbury **mlf10**



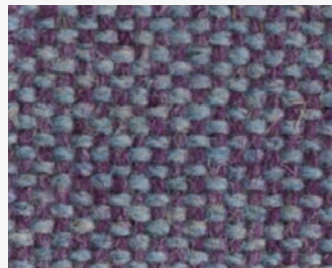
bayswater **mlf24**



bethnal **mlf25**



waterloo **mlf21**



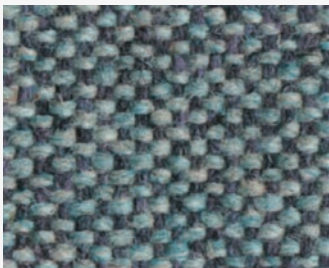
charing **mlf27**



monument **mlf09**



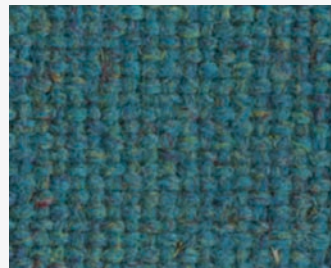
highgate **mlf33**



westminster **mlf22**



tufnell **mlf18**



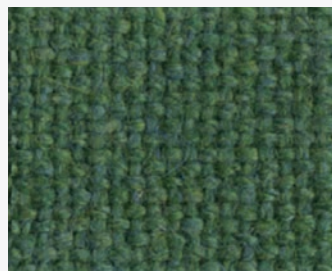
stanmore **mlf37**



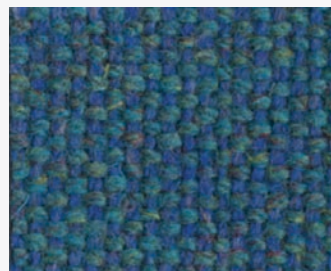
russell **mlf38**



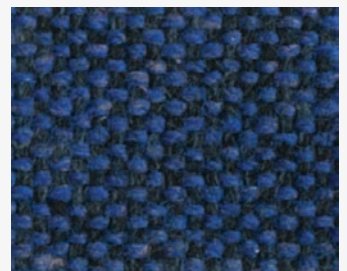
holborn **mlf05**



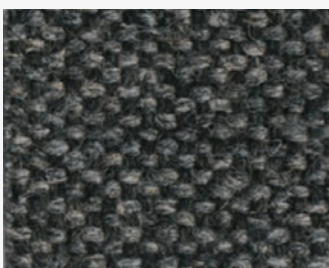
farringdon **mlf29**



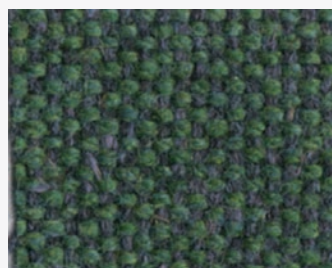
pimlico **mlf34**



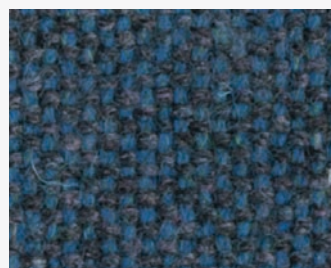
victoria **mlf19**



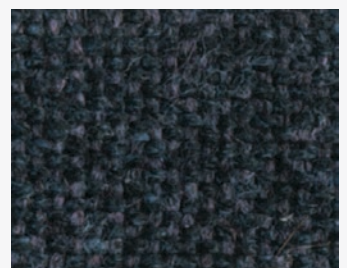
temple **mlf16**



greenford **mlf32**



brompton **mlf35**



tower **mlf36**

# main line flax.

class.C

**supplier.** camira

**origin.** england

**type.** fabric

fire-reterdant

environmental



edgware **mlf28**



# main line flax.

class.C

## product specifications

| Technical Informations | Unit  | Value                               | Test Method  |
|------------------------|---|-------------------------------------|--|
| weight                 | gr. / m <sup>2</sup>                        | 435g / m2 ±5%<br>(610g / lin.m ±5%) | -  |
| width                  | mm  | 140                                 | -  |
| abrasion resistance    | 5 year guarantee / 50,000 Martindale cycles |                                     |  |
| flammability           | -   | -                                   | BS EN 1021 - 1:2014<br>BS EN 1021 - 2:2014<br>BS 7176:2007 low hazard<br>BS 5852:2006 section 4<br>ignition source 5<br>BS 7176:2007<br>medium hazard<br>BS 5867-2: Type B |
| light fastness         | -   | 5                                   | ISO 105 - B02:2014   |
| fastness to rubbing    | -   | wet: 3, dry: 4                      | ISO 105 - X12:2002   |
| environmental          | rapidly renewable and compostable           |                                     |  |
| composition            | 70% Virgin Wool, 30% Flax                   |                                     |  |

### cleaning

Vacuum regularly. Professionally dry clean or wipe clean with a damp cloth.

### note

Batch to batch variations in shade may occur within commercial tolerances. We reserve the right to alter technical specifications without notice. The Unregistered Design Rights and the Copyright in all designs are the exclusive property of Camira Fabrics Limited.



# aspect.

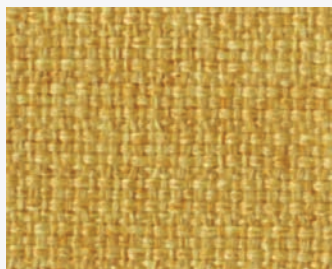
class.C

supplier. camira

origin. england

type. fabric

fire-reterdant  
washable at 60°



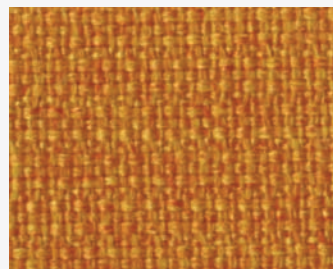
atacama **act01**



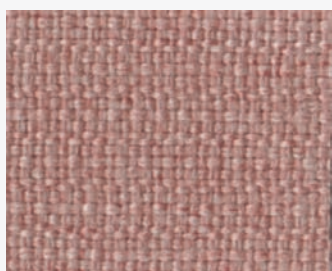
capones **act10**



sahara **act13**



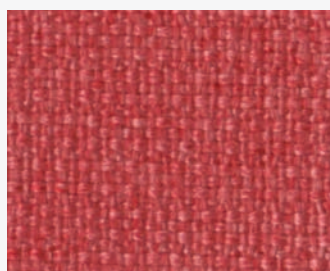
amalfi **act02**



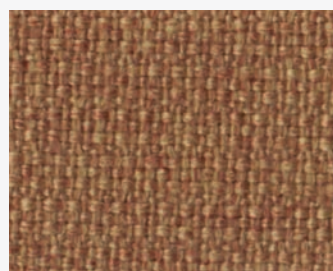
petra **act07**



yosemite **act14**



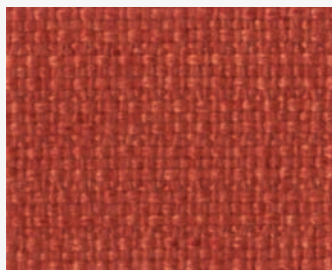
halong **act05**



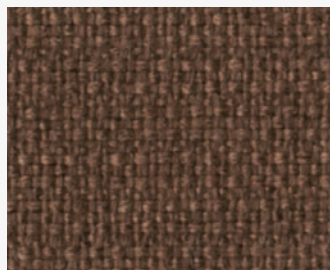
meteora **act08**



palenque **act11**



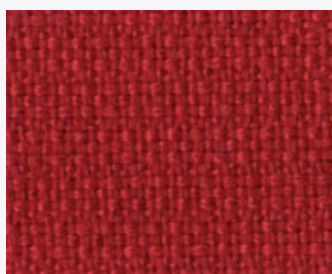
marrakech **act03**



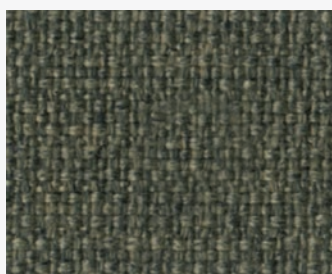
zion **act09**



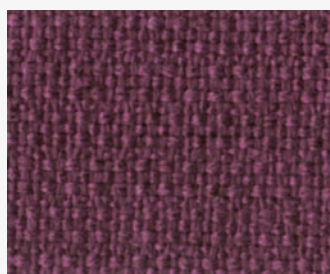
gorkha **act12**



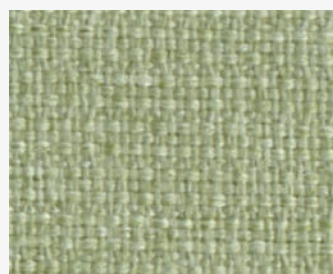
cappadocia **act04**



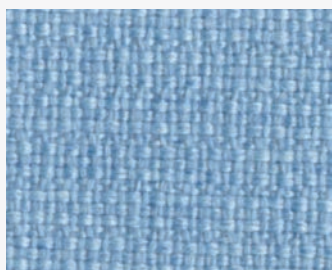
bamburgh **act15**



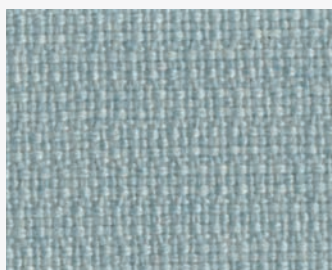
calabria **act06**



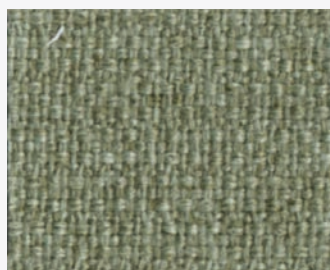
serengeti **act16**



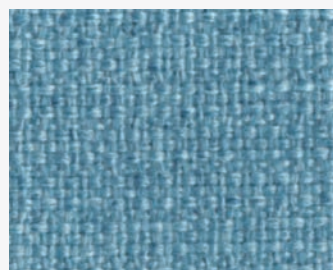
matterhorn **act19**



otago **act25**



catbells **act17**



como **act22**



# aspect.

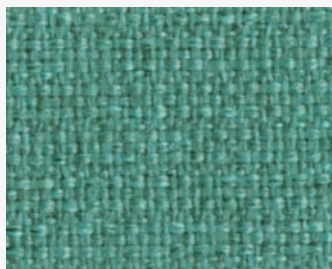
class.C

**supplier.** camira

**origin.** england

**type.** fabric

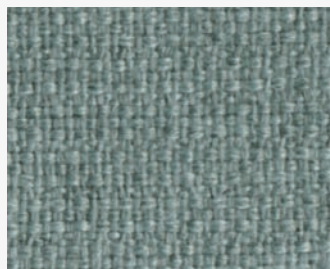
fire-reterdant  
washable at 60°



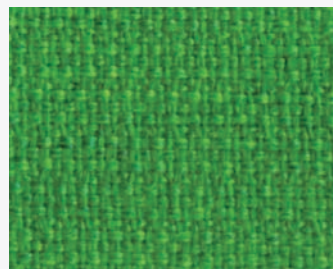
penyghent **act20**



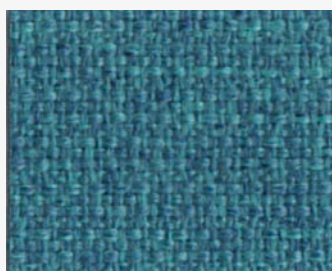
molokai **act26**



dolomites **act28**



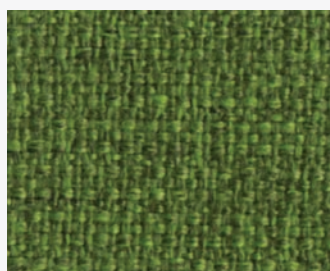
jasper **act21**



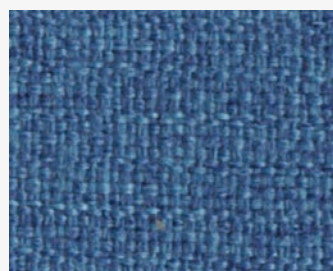
lucerne **act23**



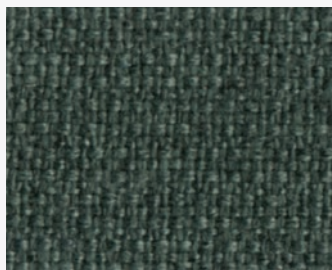
malham **act29**



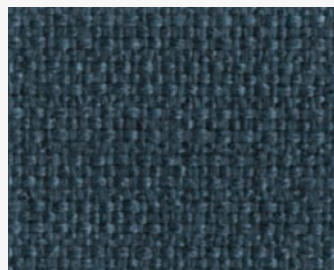
patagonia **act18**



everest **act27**



galapagos **act30**



rainer **act24**



aurora **act31**



# aspect.

class.C

## product specifications

| Technical Informations | Unit  | Value                               | Test Method  |
|------------------------|---|-------------------------------------|--|
| weight                 | gr. / m <sup>2</sup>  | 325g / m2 ±5%<br>(455g / lin.m ±5%) | -  |
| width                  | mm  | 140                                 | -  |
| abrasion resistance    | Severe contract / 10 year guarantee<br>> 35,000 Martindale cycles |                                     |  |
| flammability           | -   | -                                   | BS EN 1021 - 1:2014<br>BS EN 1021 - 2:2014<br>BS 7176:2007 low hazard<br>BS 7176:2007 medium hazard<br>BS 5852:2006 Section 4<br>ignition source 5<br>DIN 4102 B1<br>UNI 9175 Classe 1 IM<br>ÖNORM B 3825 & A 3800 |
| light fastness         | -   | 5                                   | ISO 105 - B02:2014   |
| fastness to rubbing    | -   | wet: 4, dry: 4                      | BS EN ISO 105 - X12:2002   |
| composition            | 75% Trevira CS® Flame Retardant<br>Polyester, 25% Polyester       |                                     |  |

### cleaning

Washable to 60°C. Wipe clean with a damp cloth or shampoo using proprietary upholstery shampoo.

### note

\*Why go round in circles with numbers? Camira recognise that the number of Martindale cycles does not reflect the actual wear performance of fabrics. We're so confident in the durability of our products that we provide a robust 10 year guarantee (full details available). This range is externally certified, details of which are on our website and available from our customer services

team.

Please note that seam performance is dependent on seam construction and needle and thread type. We recommend that appropriate sewing advice be taken.

Batch to batch variations in shade may occur within commercial tolerances. We reserve the right to alter technical specifications without notice. The Unregistered Design Rights and the Copyright in all designs are the exclusive property of Camira Fabrics Limited



# blazer.

class.D

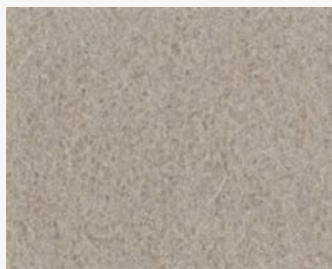
supplier. camira

origin. england

type. fabric

fire-reterdant

environmental



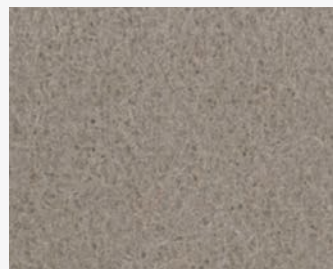
fairfield **cuz47**



wesley **cuz82**



dunhurst **cuz58**



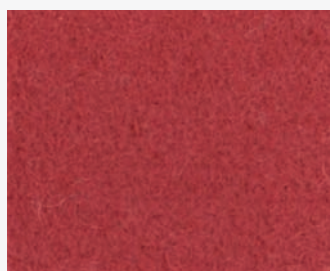
durham **cuz14**



dollar **cuz84**



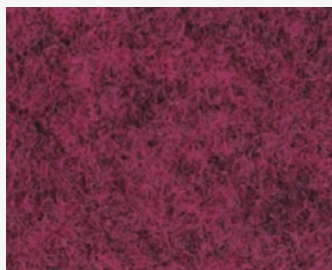
butterstone **cuz83**



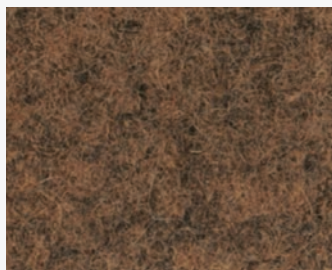
keil **cuz85**



st andrews **cuz86**



aberdeen **cuz87**



starley **cuz88**



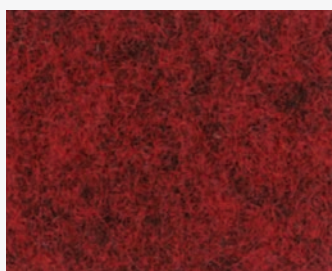
goldsmith **cuz39**



trevelyan **cuz31**



rockport **cuz89**



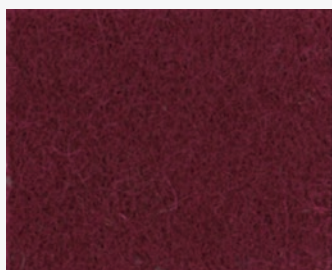
edge hill **cuz90**



oriel **cuz18**



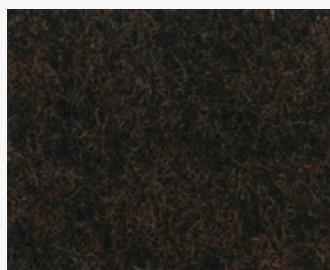
kingsmead **cuz67**



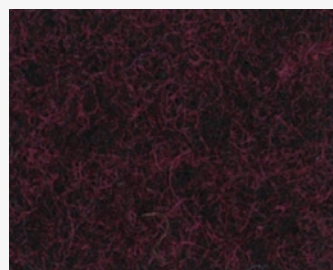
magdalene **cuz21**



handcross **cuz63**



city **cuz1a**



imperial **cuz1b**



# blazer.

class.D

supplier. camira

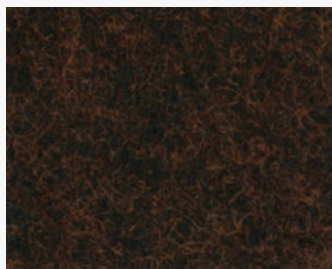
origin. england

type. fabric

fire-reterdant  
environmental



wellington **cuz13**



kimbolton **cuz66**



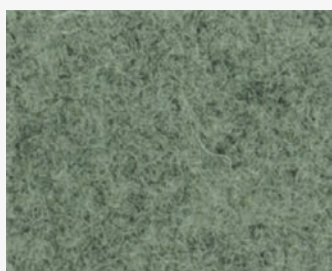
ulster **cuz1f**



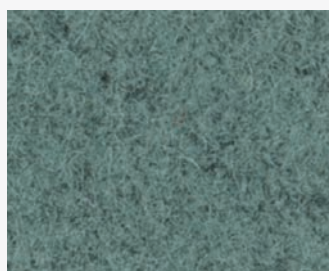
bath **cuz1d**



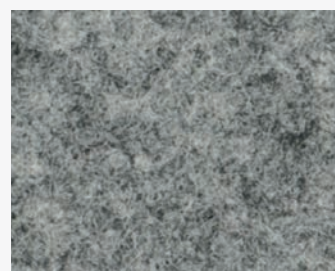
silverdale **cuz28**



lancaster **cuz1c**



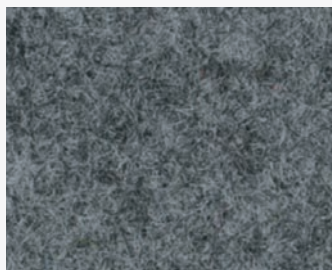
latymer **cuz33**



surrey **cuz1e**



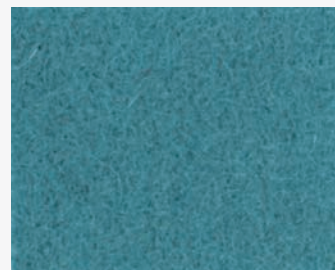
newport **cuz1l**



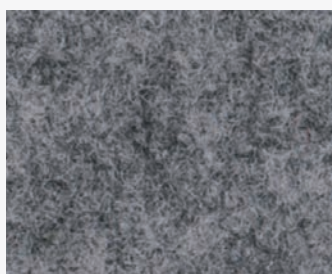
aberlour **cuz1j**



bryanston **cuz53**



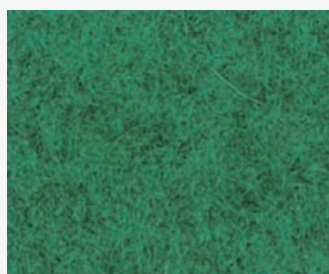
aston **cuz02**



salford **cuz1g**



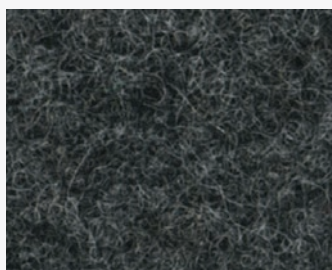
camphill **cuz1k**



belhaven **cuz1h**



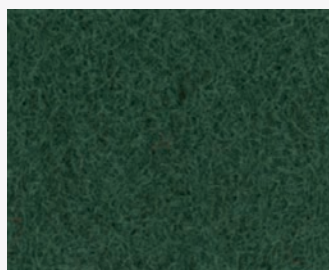
knightsbridge **cuz26**



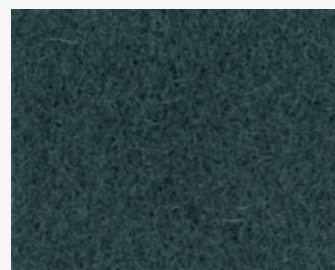
silcoates **cuz30**



glasgow **cuz1m**



cardiff **cuz1n**



hull **cuz1p**



# blazer.

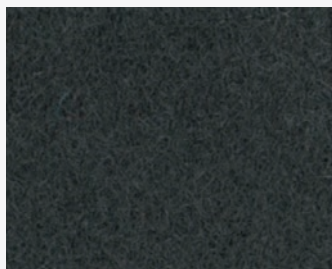
class.D

supplier. camira

origin. england

type. fabric

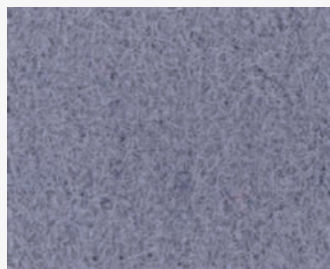
fire-reterdant  
environmental



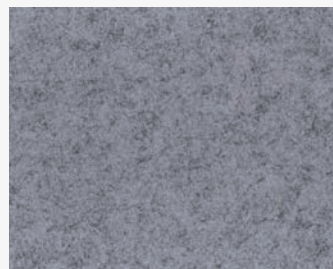
winchester **cuz12**



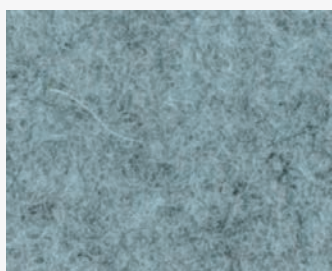
brighton **cuz1q**



sheffield **cuz1t**



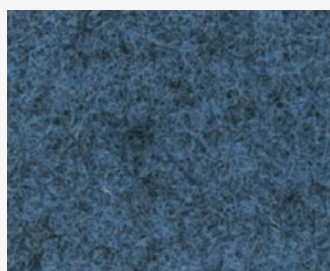
nottingham **cuz1s**



plymouth **cuz1r**



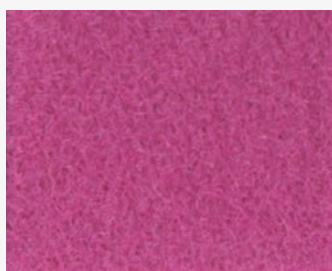
manchester **cuz1v**



newcastle **cuz1w**



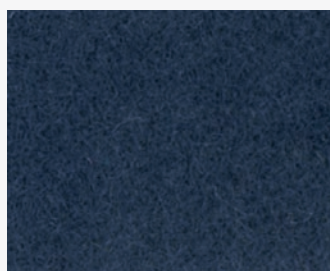
st martins **cuz1x**



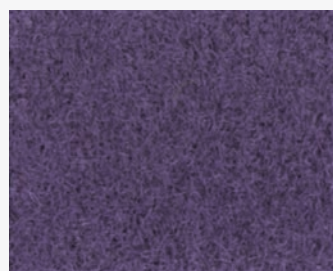
sussex **cuz1u**



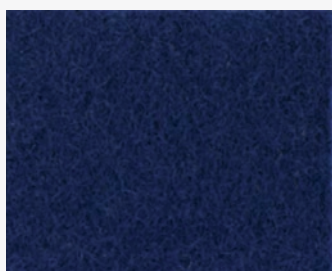
balliol **cuz24**



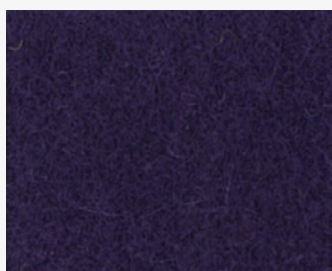
edinburgh **cuz1y**



exeter **cuz1z**



oxford **cuz09**



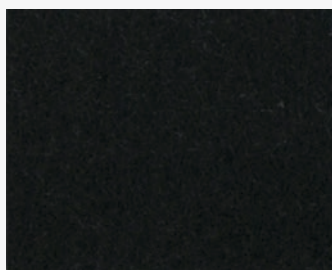
collingwood **cuz27**



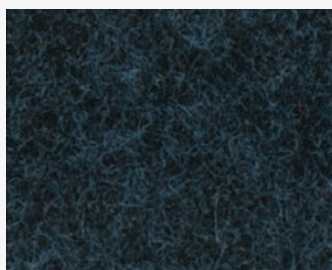
loughborough **cuz2a**



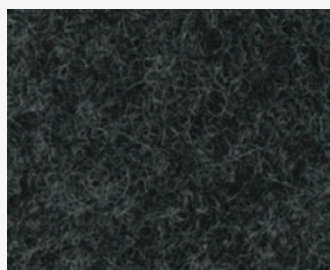
eastbourne **cuz46**



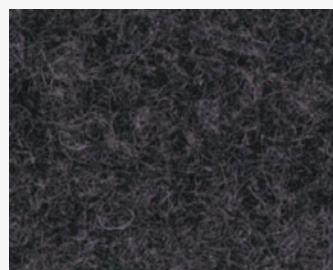
napier **cuz08**



glenalmond **cuz62**



bromsgrove **cuz35**



banbridge **cuz32**

# blazer.

class.D

## product specifications

| Technical Informations | Unit  | Value   | Test Method   |
|------------------------|---|---|---|
| weight                 | gr. / m <sup>2</sup>                        | 460g / m <sup>2</sup> ±5%<br>(645g / lin.m ±5%) | -   |
| width                  | cm  | 140   | -   |
| abrasion resistance    | 5 year guarantee / 50,000 martindale cycles |   |   |
| flammability           | -   | -   | BS EN 1021 - 1:2014<br>BS EN 1021 - 2:2014<br>BS 7176:2007 low hazard |
| light fastness         | -   | 5   | ISO 105 - B02:2014  |
| fastness to rubbing    | -   | wet: 4, dry: 4                                  | ISO 105 - X12:2002  |
| environmental          | rapidly renewable and compostable           |   |   |
| composition            | 100% virgin wool.                           |   |   |

### cleaning

Vacuum regularly. Professionally dry clean or wipe clean with a damp cloth.

Please note that seam performance is dependent on seam construction and needle and thread type. We recommend that appropriate sewing advice be taken.

### note

Batch to batch variations in shade may occur within commercial tolerances. We reserve the right to alter technical specifications without notice. The Unregistered Design Rights and the Copyright in all designs are the exclusive property of Camira Fabrics Limited.





# synergy.

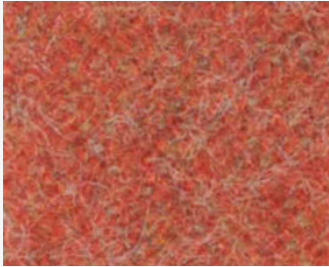
class.D

supplier. camira

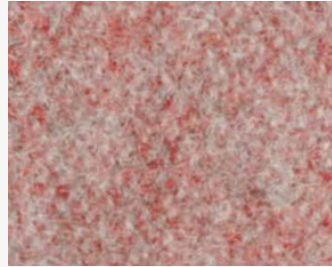
origin. england

type. fabric

fire-reterdant



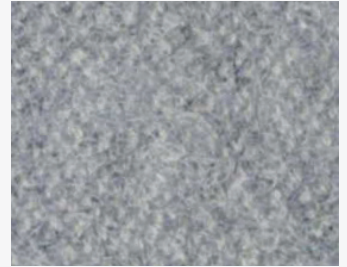
congregate **lds83**



affinity **lds74**



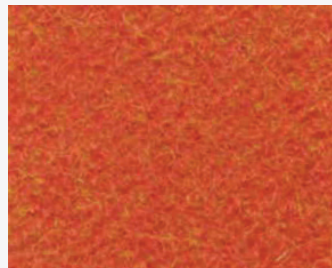
fate **lds07**



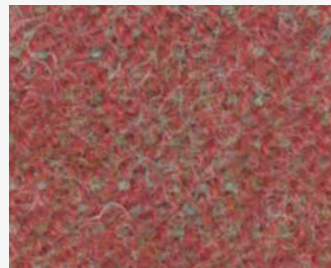
venture **lds05**



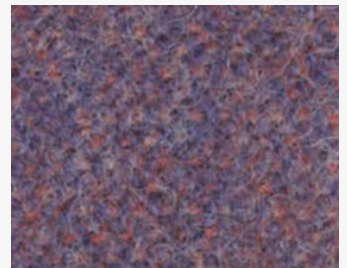
mutual **lds84**



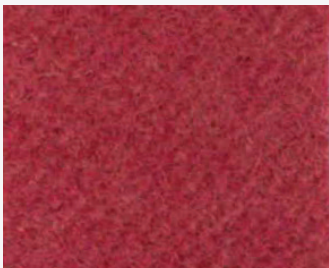
likeness **lds82**



work **lds73**



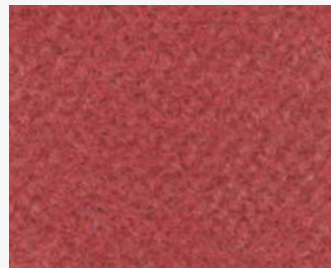
fellowship **lds66**



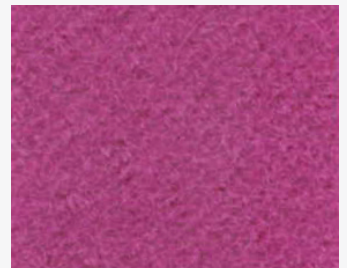
share **lds85**



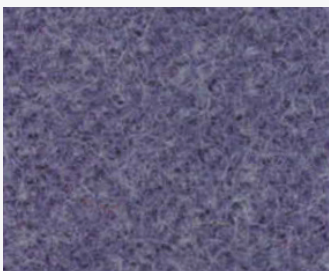
similar **lds81**



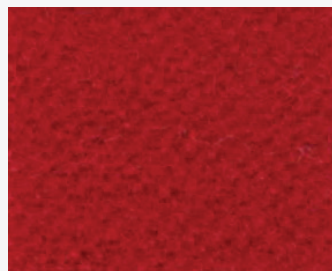
contribution **lds75**



compose **lds72**



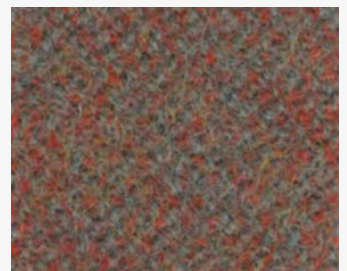
warmth **lds67**



global **lds86**



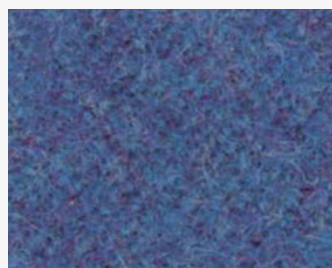
apt **lds80**



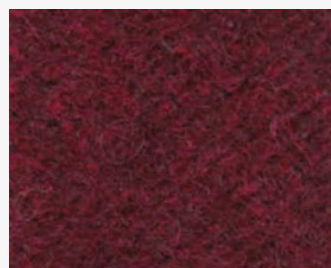
success **lds76**



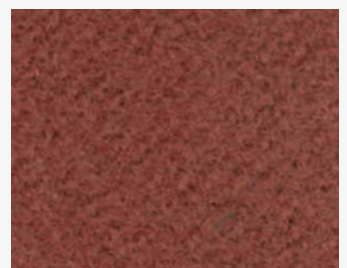
open **lds71**



collaborate **lds68**



values **lds87**



combo **lds77**



# synergy.

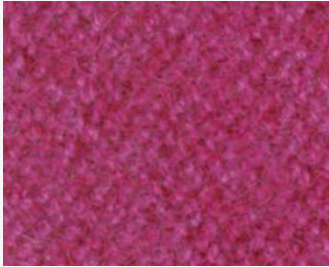
class.D

supplier. camira

origin. england

type. fabric

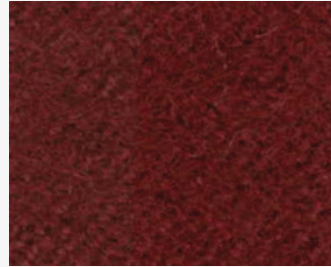
fire-reterdant



medley **lds36**



process **lds88**



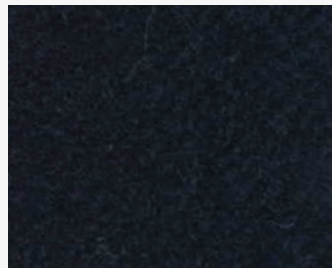
amiable **lds79**



cordial **lds78**



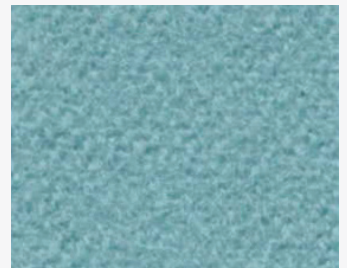
together **lds70**



sync **lds69**



huddle **lds65**



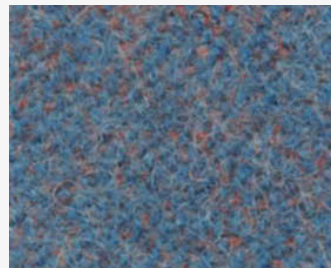
support **lds55**



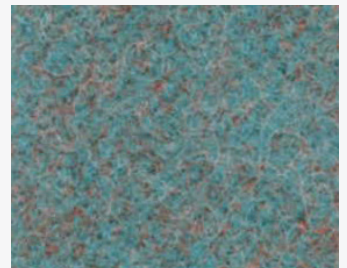
regard **lds54**



summon **lds45**



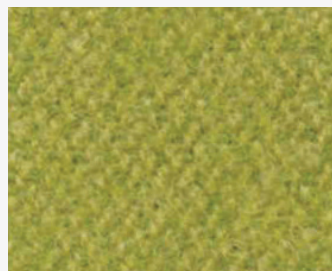
order **lds64**



kinship **lds56**



pact **lds53**



gather **lds46**



relate **lds44**



guild **lds63**



engage **lds57**



comply **lds52**



integrate **lds47**



lateral **lds28**



# synergy.

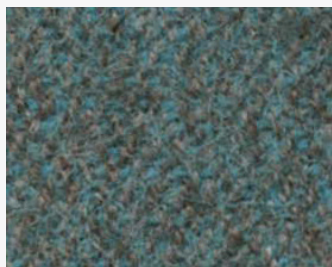
class.D

supplier. camira

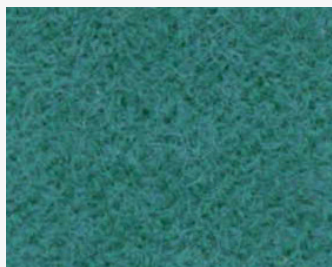
origin. england

type. fabric

fire-reterdant



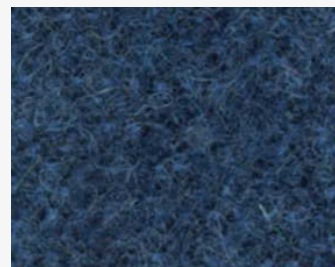
family **lds58**



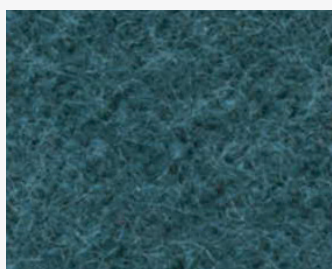
kindness **lds51**



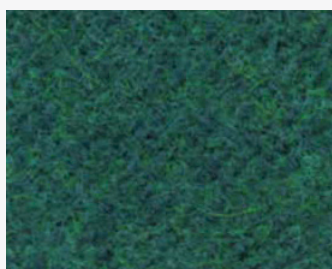
interfuse **lds48**



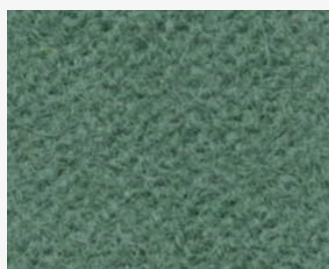
alike **lds62**



group **lds59**



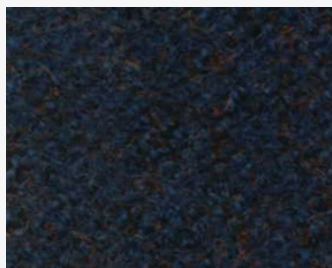
league **lds50**



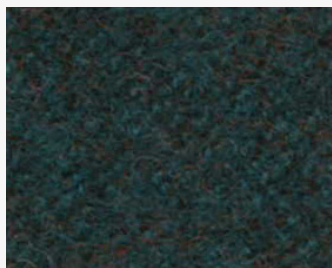
append **lds49**



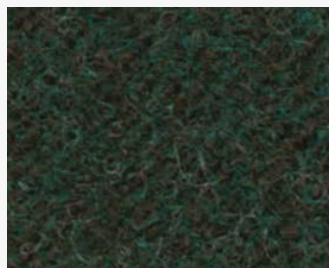
marry **lds43**



assemble **lds61**



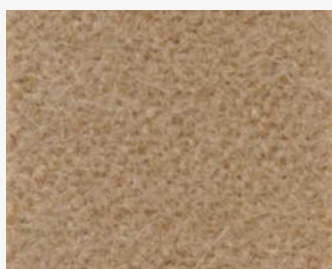
accord **lds60**



couple **lds41**



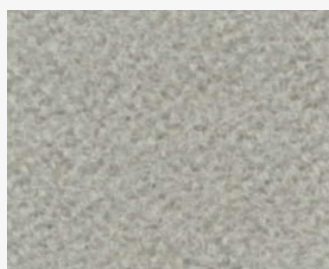
intertwine **lds42**



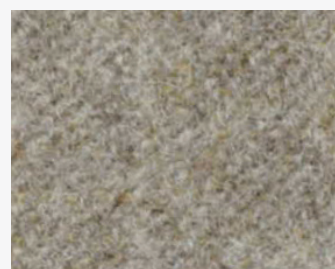
loop **lds18**



bracket **lds23**



chain **lds19**



affix **lds32**



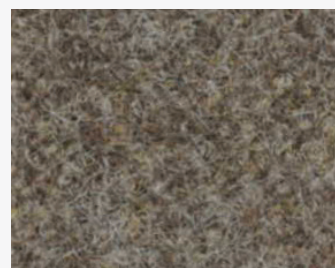
serendipity **lds08**



chemistry **lds35**



frame **lds22**



tag **lds33**



# synergy.

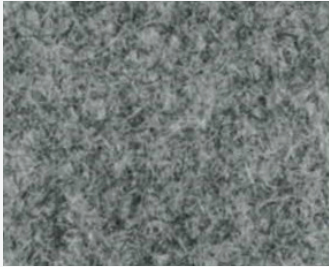
class.D

supplier. camira

origin. england

type. fabric

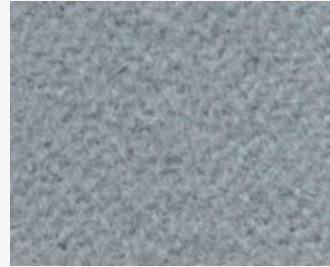
fire-reterdant



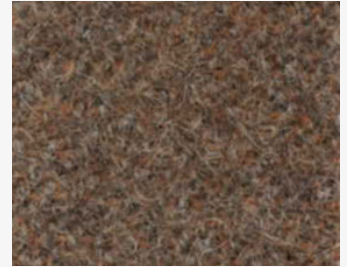
partner **lds16**



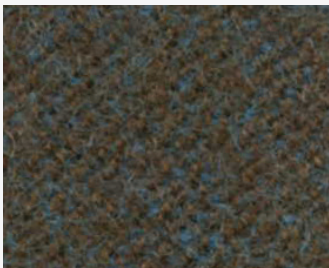
level **lds20**



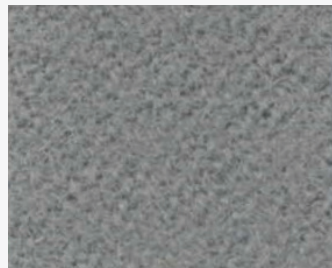
team **lds21**



linea **lds37**



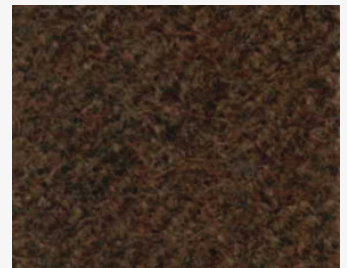
unity **lds38**



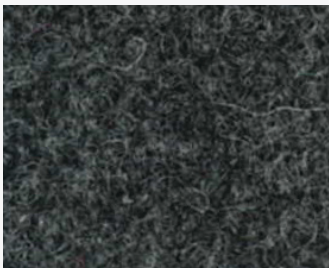
pair **lds31**



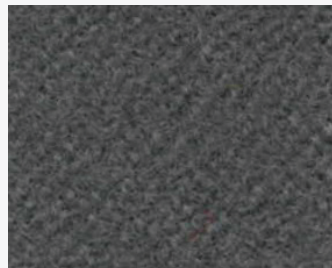
bond **lds24**



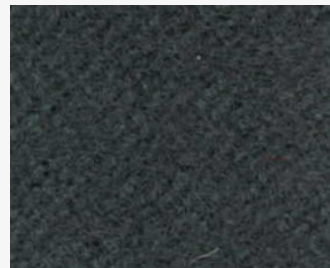
collective **lds39**



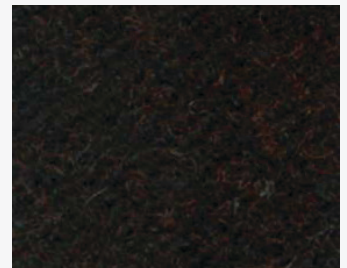
mix **lds17**



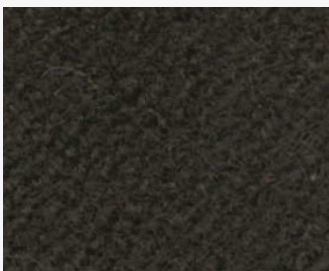
hook **lds29**



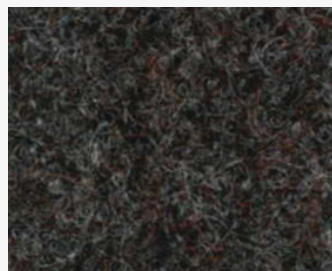
compound **lds25**



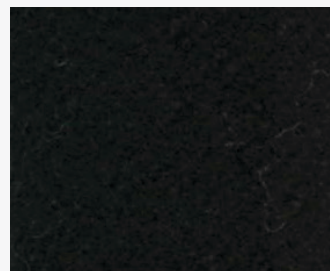
co-operate **lds40**



bridge **lds26**



wed **lds34**



seek **lds27**



# synergy.

class.D

## product specifications

| Technical Informations | Unit   | Value                               | Test Method   |
|------------------------|--|-------------------------------------|---|
| weight                 | gr. / m <sup>2</sup>                         | 400g / m2 ±5%<br>(560g / lin.m ±5%) | -   |
| width                  | cm   | 140                                 | -   |
| abrasion resistance    | 5 year guarantee / 100,000 martindale cycles |                                     |   |
| flammability           | -  | -                                   | BS EN 1021 - 1:2014<br>BS EN 1021 - 2:2014<br>BS 7176:2007 low hazard<br>UNI 9175 class 1Im |
| light fastness         | -  | 5                                   | ISO 105 - B02:2014  |
| fastness to rubbing    | -  | wet: 4, dry: 4                      | ISO 105 - X12:2002  |
| composition            | 95% virgin wool, 5% polyamide                |                                     |   |

### cleaning

Vacuum regularly. Professionally dry clean or wipe clean with a damp cloth.

Please note that seam performance is dependent on seam construction and needle and thread type. We recommend that appropriate sewing advice be taken.

### note

Batch to batch variations in shade may occur within commercial tolerances. We reserve the right to alter technical specifications without notice. The Unregistered Design Rights and the Copyright in all designs are the exclusive property of Camira Fabrics Limited.

# patina.

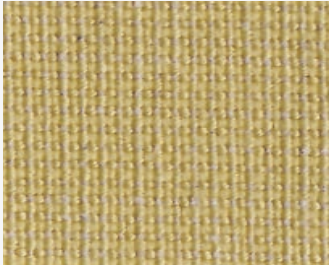
class.D

supplier. camira

origin. england

type. fabric

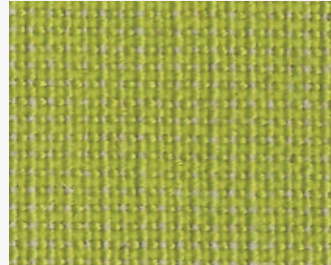
fire reterdant



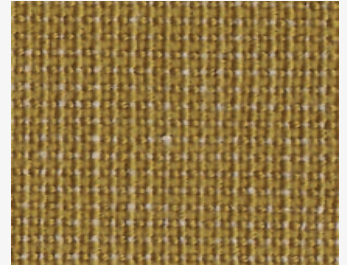
lustre **pat16**



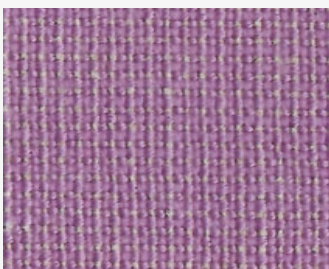
aged **pat02**



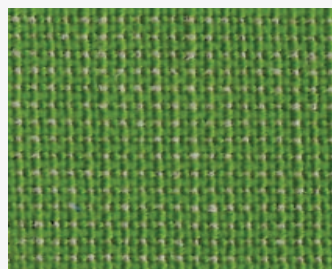
imprint **pat39**



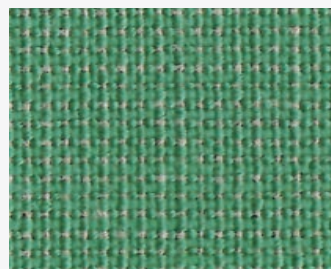
evolved **pat11**



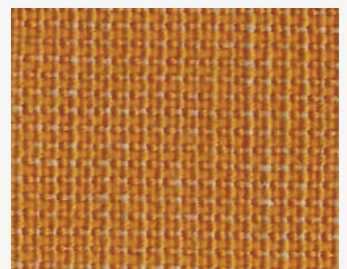
striated **pat40**



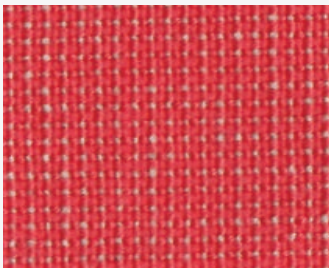
meander **pat21**



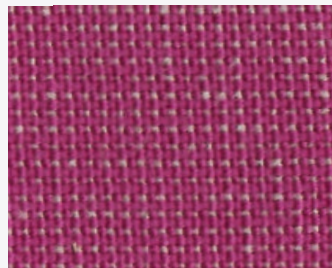
temper **pat28**



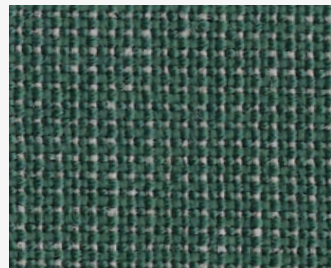
glisten **pat25**



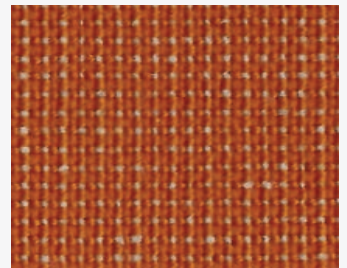
bloomed **pat15**



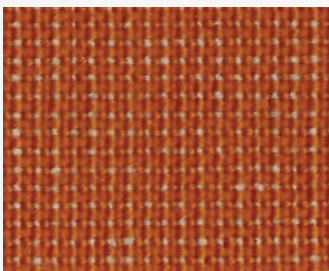
covered **pat14**



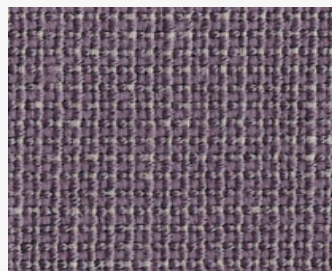
speckled **pat41**



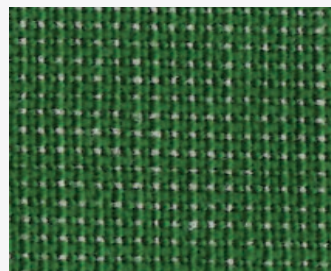
glazed **pat26**



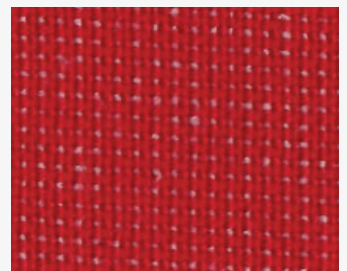
irregular **pat09**



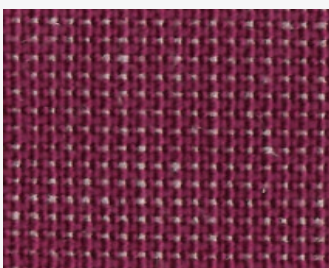
engrave **pat43**



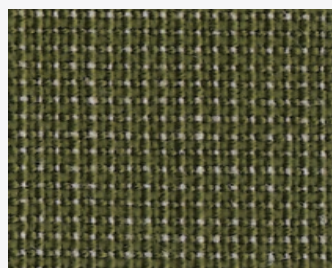
flecked **pat38**



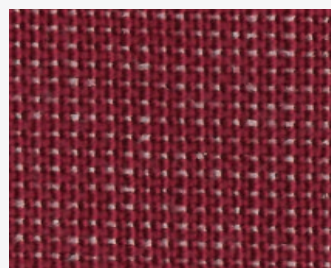
braised **pat27**



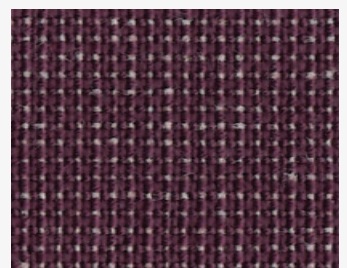
blurred **pat18**



inlay **pat37**



twisted **pat36**



lacquer **pat42**



# patina.

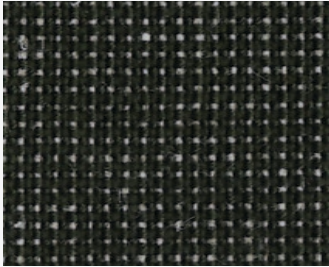
class.D

supplier. camira

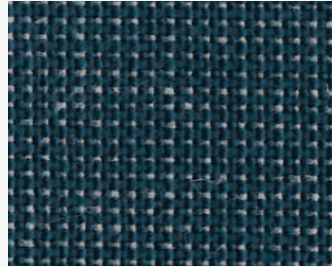
origin. england

type. fabric

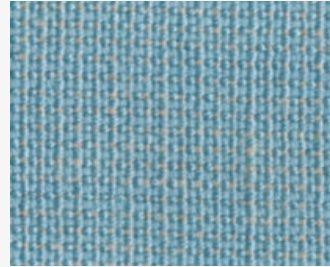
fire reterdant



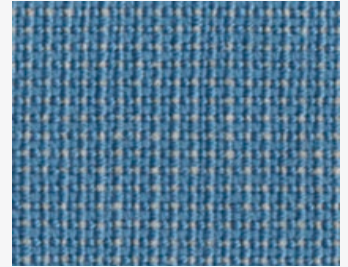
restored **pat07**



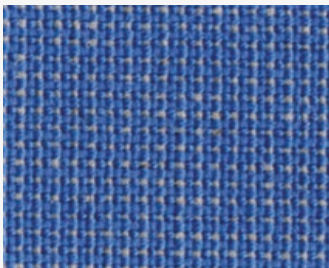
reclaimed **pat05**



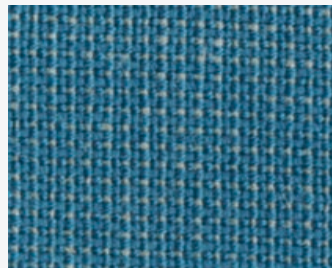
weathered **pat01**



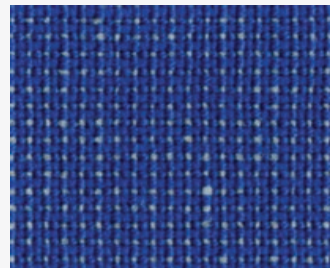
languish **pat31**



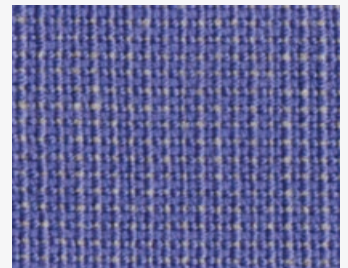
salvaged **pat06**



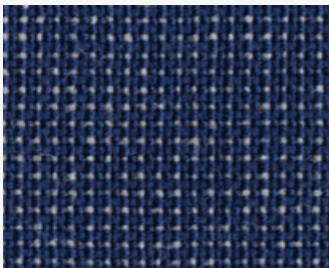
anodised **pat32**



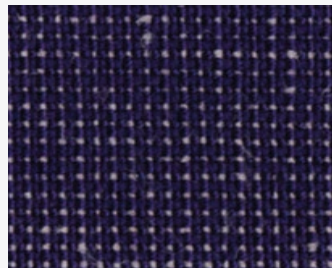
seamless **pat23**



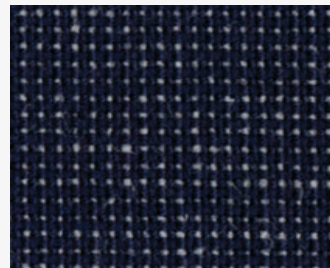
tessellate **pat22**



sheen **pat17**



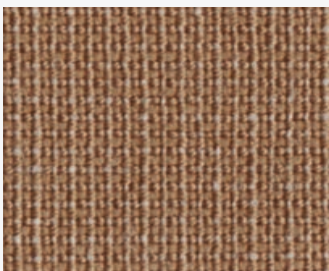
petrology **pat29**



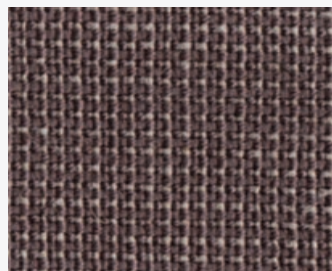
ripped **pat19**



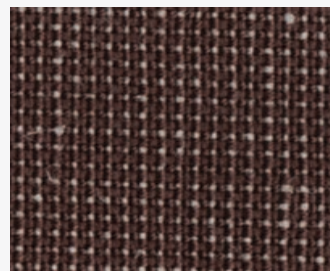
matured **pat10**



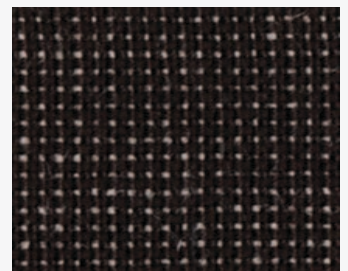
dusted **pat13**



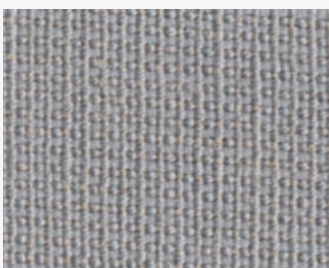
smudged **pat30**



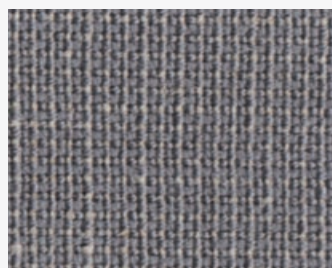
timeworn **pat08**



seasoned **pat03**



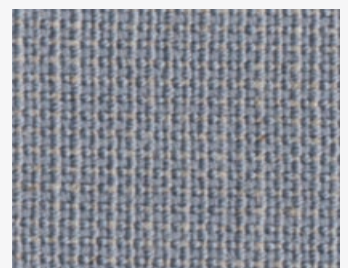
layered **pat12**



stoney **pat34**



strata **pat33**



veneer **pat04**



# patina.

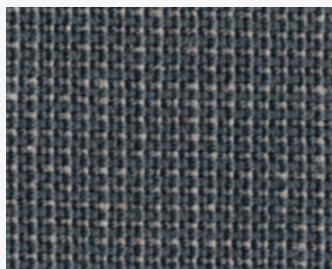
class.D

**supplier.** camira

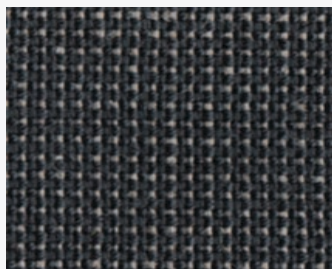
**origin.** england

**type.** fabric

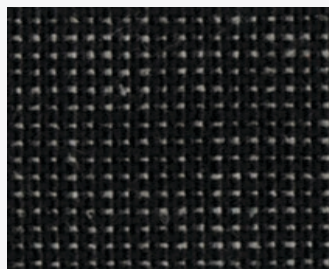
fire reterdant



chiselled **pat24**



anneal **pat35**



thoughtened **pat20**

# patina.

class.D

## product specifications

| Technical Informations | Unit  | Value                          | Test Method   |
|------------------------|---|--------------------------------|---|
| weight                 | gr. / m <sup>2</sup>  | 330g ±5%<br>(460g / lfd.m ±5%) | -   |
| width                  | cm  | 140                            | -   |
| abrasion resistance*   | severe contract / 10 years guarantee >100,000 martindale cycles |                                |   |
| flammability           | -   | -                              | EN 1021 - 1 (cigarette)<br>EN 1021 - 2 (match)<br>BS 7176 low hazard<br>BS 5852 ignition source 5<br>BS 7176 medium hazard<br>BS 5967 - 2 type B curtains & drapes<br>UNI 9175 classe 1 IM<br><br>note:<br>flammability performance is dependent on components used |
| light fastness         | -   | 5                              | ISO 105 - B02   |
| fastness to rubbing    | -   | wet: 3, dry: 4                 | ISO 105 - X12   |
| composition            | 69% wool, 22% flax, 8% polyamide, 1% viscose                    |                                |   |

### cleaning

Vacuum regularly, Professionally dry clean or wipe clean with a damp cloth.

### note

Please note that seam performance is dependent on seam construction and needle and thread type. We recommend that appropriate sewing advice be taken.

Batch to batch variations in shade may occur within commercial tolerances. We reserve the right to alter technical specifications without notice. The Unregistered Design Rights and the Copyright in all designs are the exclusive property of Camira Fabrics Limited.

\* Abrasion testing produces a wide variability of results even from the same test sample. The independent certificate of >100,000 cycles is available on our website or from our customer service team. Internally we also specify this product at >100,000 cycles which we believe is realistic for repeatability of testing. Please be aware that abrasion testing alone is not a reliable indicator of actual wear performance of fabrics. We're so confident in the durability of our products that we provide a robust 10 year guarantee (full details available).

# ocean.

class. real leather

supplier. deri italya

origin. italy

type. real leather

fire-reterdant

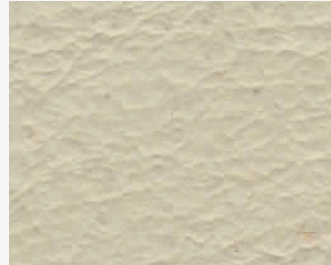
anti-microbial



bianco **401**



zinc **404**



peniciline **435**



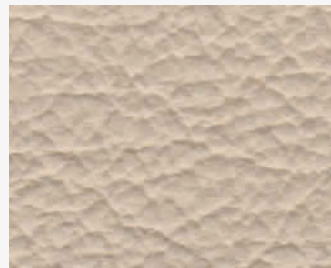
fortuna **436**



ghia **404**



cream **406**



betula **433**



fumo **408**



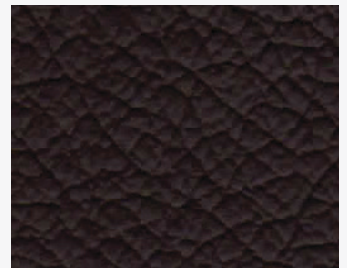
swamp **439**



antilop **438**



nougat **441**



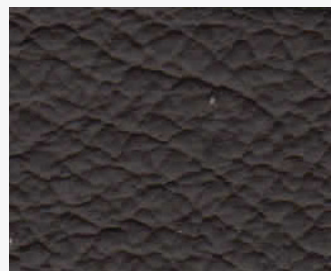
t. moro **420**



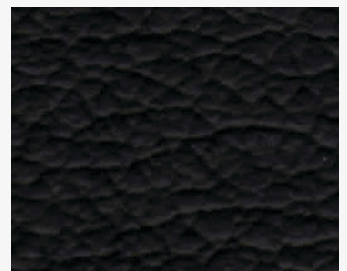
forzen **403**



gray **405**



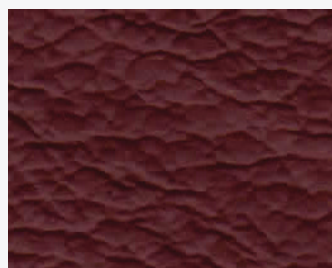
gray shadow **440**



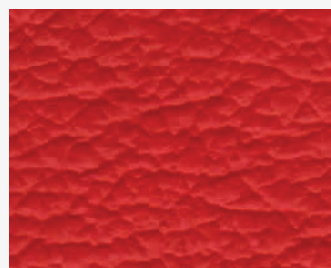
nero **423**



tan **437**



bordo **431**



red **417**



# ocean.

class.real leather

## product specifications

| Technical Informations   | Unit       | Guaranteed | Test Method                            |
|--|------------|------------|--|
| tear strength  | n          | >= 20      | UNI EN ISO 3377-1                      |
| colour fastness to rubbing dry 500 cycles                              | grey scale | > = 4      | UNI EN ISO 11640:1998                  |
| colour fastness to rubbing wet 250 cycles                              | grey scale | > = 4      | UNI EN ISO 11640:1998                  |
| colour fastness to rubbing sweat 80 cycles                             | grey scale | > = 4      | UNI EN ISO 11640:1998<br>ISO 11641 pH8 |
| flexing endurance dry 50.000 cycles                                    | -          | No damage  | UNI EN ISO 5402                        |
| dinish adhesion - dry  | n / cm     | > = 2      | UNI EN ISO 11644                       |
| colour fastness to artificial light exposition energy 16.000 kj / sqm. | blue Scale | > = 5      | UNI EN ISO 105 B02 (MET. 5)            |
| burning behaviour to cigarette and match flame                         | -          | Pass       | BS 5852:1979                           |

### cleaning

Vacuuming and dry cleaning

### stain removal

See special guide

### benefits of wool

Wool is a renewable resource  
Wool is very comfortable because of its ability to absorb/give off humidity  
Wool is flame retardant  
Wool is biodegradable  
Wool is naturally soil resistant  
Wool ages with grace

### quality benefits

Very good abrasion  
Good lightfastness  
Flame retardant

### environmental benefits

Complies with EU Ecolabel  
No use of AZO dyes, which may split off carcinogenic acrylamines  
No use of dyes containing heavy metals/ complies with ETAD norm  
No content of formaldehyde  
Biodegradable spinning oil  
We adhere to the limits set by the Danish Environmental Protection Agency's 'List of undesirable substances'  
Complies with REACH

### reduced Emissions

Greenguard and Greenguard Gold certified

# contact.

## **international sales.**

Kagithane Cd. No: 87, 34403, Caglayan,  
Istanbul, Turkey

**t.** +90 (212) 220 26 97

**f.** +90 (212) 320 12 76

**e.** [export@bt.design](mailto:export@bt.design)

## **istanbul.**

Kagithane Cd. No: 87, 34403, Caglayan,  
Istanbul, Turkey

**T:** +90 (212) 220 4 220

**F:** +90 (212) 320 12 76

**E:** [istanbul@bt.design](mailto:istanbul@bt.design)

## **ankara.**

Prof. Dr. Ahmet Taner Kislali Mh. Alacaatli Cd.  
No: 12/4, Cayyolu, Cankaya, Ankara, Turkey

**t.** +90 (312) 241 00 43

**f.** +90 (312) 241 00 53

**e.** [ankara@bt.design](mailto:ankara@bt.design)

## **u.s.a.**

50 Harrison Street, Suite 212-E,  
Hoboken, NJ 07030

**t.** +1 (201) 345-5550

**e.** [info@bandtusa.com](mailto:info@bandtusa.com)

**w.** [www.bandtusa.com](http://www.bandtusa.com)

## **factory.**

Çerkeşli OSB Mah. İMES, 10. Cad. No: 18,  
Dilovası, Kocaeli, Türkiye

**t.** +90 (262) 751 27 09

**f.** +90 (262) 751 27 49

**e.** [factory@bt.design](mailto:factory@bt.design)

**[www.bt.design](http://www.bt.design)**