



THE KEY ISSUE



MODULAR
LIGHTING —
INSTRUMENTS

MODULAR knows that consumers don't like to compromise on either lighting, design or technology. That is why we are consistently pushing the boundaries of architectural lighting by creating clever, high-end design and energy-friendly lighting solutions. By making use of cutting-edge LED technologies and anticipating future energy trends, Modular remains faithful to its global role as a pioneer in the industry, always keeping one step ahead. Rather than standing out, we achieve this with a discrete presence. This means that we always strive to put the right light, in the right amount, in the right place. To allow you to create the best lighting conditions in any room with Modular Lighting Instruments, we have listed some tips below.

GENERAL TIPS

... FOR THE KITCHEN

- Kitchen lighting serves a double purpose: offering bright, functional lighting to enable your cooking, as well as providing the right atmospheric lighting for the moment you want to sit down and enjoy your meal.
- Pay attention to the natural incidence of light and avoid having to work in your own shadow by installing lights behind your back.
- Ensure sufficient general lighting, supplemented by functional lighting above your cooking area, the worktop or beneath the wall cabinets.
- This functional lighting should be well-diffused and provide the necessary lux level (between 300 and 400 lux).

... FOR THE LIVING ROOM

- Your living room has a myriad of functions: dining area, TV corner, reception and sometimes even an office area. All of these situations call for different lighting settings. Make sure to combine different types of lighting, which can easily be controlled by our **connected lighting** technology.
- First ensure good general lighting, using built-in spotlights. Then add directable spotlights to the mix, allowing you to accentuate artworks, photos and other nice features.
- Wall lighting, indirect lighting and decorative lighting add extra warmth to the room.
- Make sure to use different circuits and allow all lighting to be dimmed.
- Bear in mind that dark walls absorb more light.

... FOR THE HALL AND STAIRCASE

- Make sure your lighting in the hall and staircase can be controlled separately.
- Use the same type of lighting in both the hall and the adjoining living areas. This creates a uniform feeling and brings tranquility to your home.
- First impressions are important, so use a real attention grabber in large halls. This connects a high ceiling with the rest of the space.
- In smaller halls, you could use rigid lines of light to make the space look larger.
- Ensure enough light alongside your staircase. Use orientation lighting in the stairs itself or along the wall. This also accentuates the architectural character of the staircase.
- Combine your lighting solutions with a motion sensor and / or **connected lighting** technology to save energy.

... FOR THE BEDROOM

- Make sure to provide different types of lighting that serve the various functions of your bedroom. Settling down, reading a book, picking out clothes etc. are only a few of different actions that require specific lighting settings. It goes without saying that our **connected lighting** technology is perfect to cater to these needs.
- Having good general lighting is important, as is the use of different power points. It is important to allow yourself to dim the light and switch it on and off, both by the door and from your bed. Or you could simply make use of our **connected lighting** technology.
- Directable lighting facilitates reading. Choose between a mounted fitting or a bedside table lamp and make sure you're able to dim this lighting.
- Indirect wall lighting behind your bed creates that cosy and warm feeling.

... FOR THE BATHROOM

- Pay attention to possible damp and wet conditions in your bathroom. Using lighting solutions with the right IP rating is recommended.
- Ensure sufficient general lighting, combined with atmospheric lighting to create the ultimate spa experience. It's best to work with wall fittings, but make sure these are dimmable and independently controllable.
- Install diffused lighting on both sides of a mirror, or above it, to avoid shadows on your face.

... FOR THE GARDEN AND TERRACE

- The use of motion sensors saves a lot of energy and is comfortable.
- Play with different heights of lighting, creating depth in your garden.
- Bring the inside outside by using the same light fittings on the terrace. Always use fixtures with a suiting IP rating!

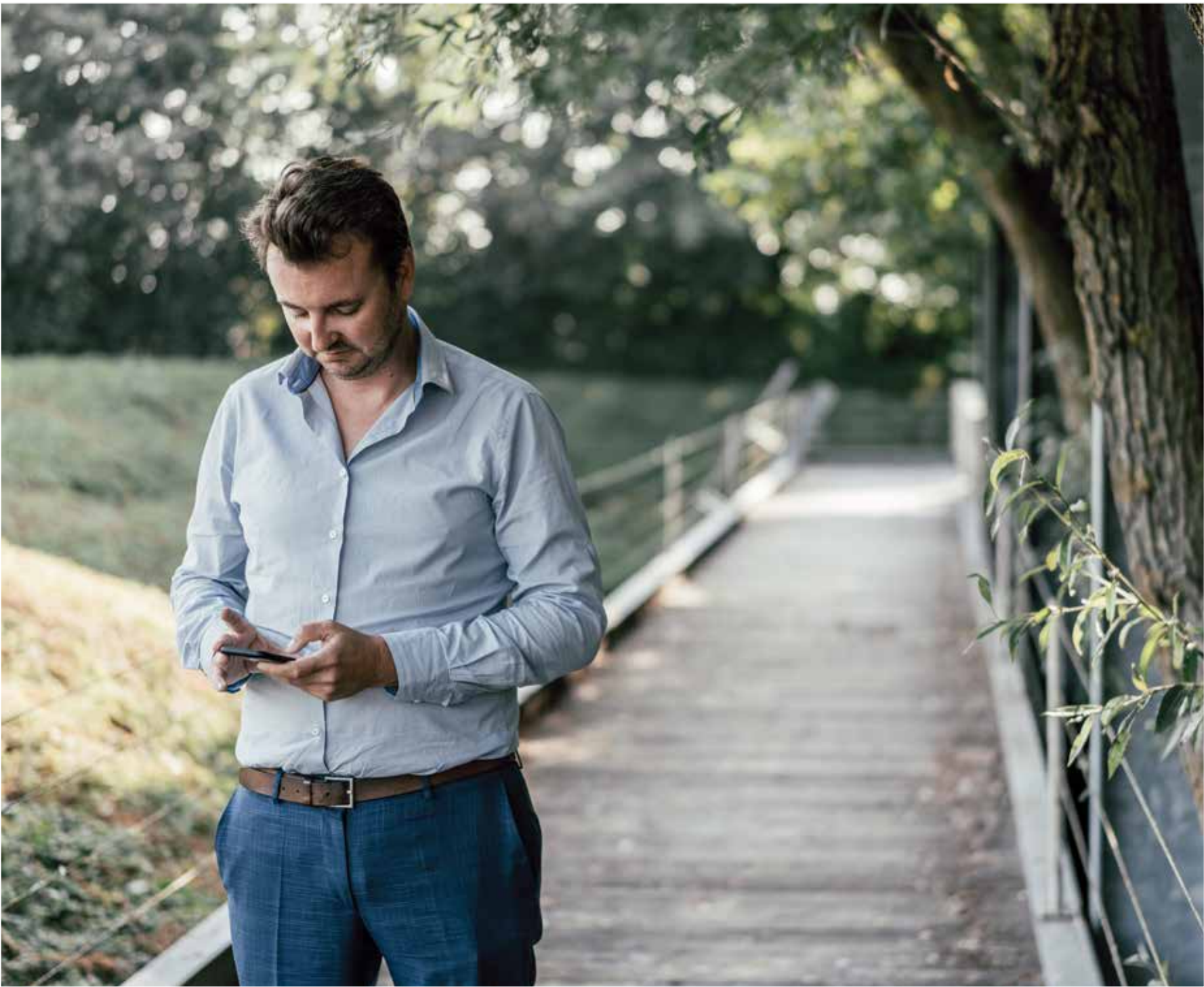
 **GETTING INSPIRED**
MEET THE NEIGHBOURS.

TAPPING INTO THE POWER OF CONNECTED LIGHTING

Connected lighting is a whole new way of controlling and experiencing light. It allows users to easily switch their lights on and off with just one tap or swipe, even remotely, or to activate light routines. It lets them create a particular atmosphere to fit their mood, the occasion or the task at hand. More than that, it opens the door to smart home automation, combining lighting with thermostats, blinds, sound systems and much, much more.

Traditional home automation systems that connect to lights, thermostats, security cameras, blinds, etc. are known to be expensive, complex and hard to retrofit. Modular wanted its customers to smoothly interact with their lights without structural changes to e.g. the wiring. The ‘Friends of Hue’ partnership with Philips, which allows Modular to integrate connected technology into its solutions, perfectly fits the bill.

For more info, please go to:
www.supermodular.com/modular-connected



NEED MORE INTIMACY? ENJOY OUR WARM DIM COSINESS

This **warm dim** technology enables LEDs to be dimmed in order to create the same warm ambiance as that of a dimmed halogen lamp. With matching high CRI values over dimming, a full range of beam angles & LED gears, impeccable dimming results without hiccups. Of course, the integration in beautiful, architectural fixtures, this new addition broadens the horizon of Modular’s favourite and design emblematic fixtures.

Good to know: as this technology is integrated into a module developed by our very own in-house designers, our ‘warm dim’ solution* is much more efficient - even at system level - than any other available on the market today.

* available for:
Smart cake / kup / lotis 82 & 115 adjustable
M-LED 50 & M-LED 70 modules

5 WAYS TO TAP INTO THE POWER OF MODULAR CONNECTED LIGHTING



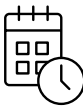
SMOOTHLY CONTROL THE LIGHTS

— Turn lights on, off or dim them anywhere, any time



CREATE THE RIGHT AMBIANCE

— Change the intensity and brightness of lights to match the mood, needs or task at hand



ACTIVATE LIGHT ROUTINES

— Set light schedules for daily routines, like wake-up, go-to-sleep, arrive home, ...



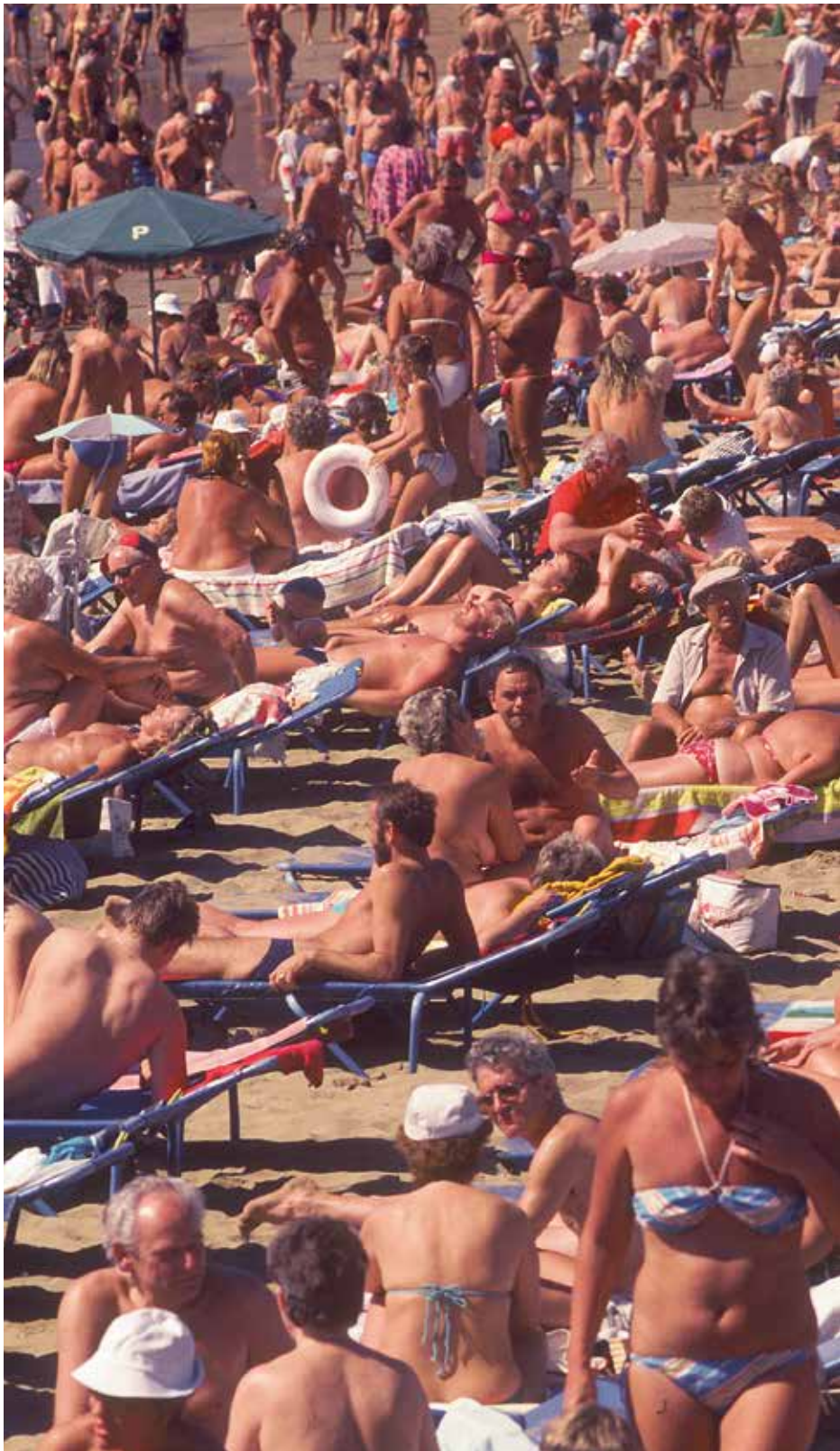
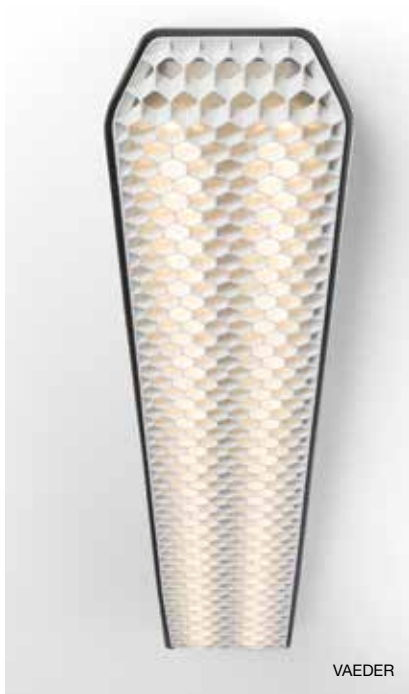
MANAGE YOUR LIGHT ANYWHERE, ANY TIME

— Let the ‘home or away’ or ‘geofencing’ technology help to control your light



GO ALL-CONNECTED

— Sync light with the Friends of Hue ecosystem (movies, music, thermostats, etc.)





LIVING ROOM
CONNECTED @HOME.



MP78 WITH REKTOR



MINI MULTIPLE FOR SMART RINGS



SMART CAKE 115 ADJUSTABLE
SMART SURFACE TUBED



MEDARD TRACK



TRAPZ



SPLIT MEDIUM



NUDE 1X



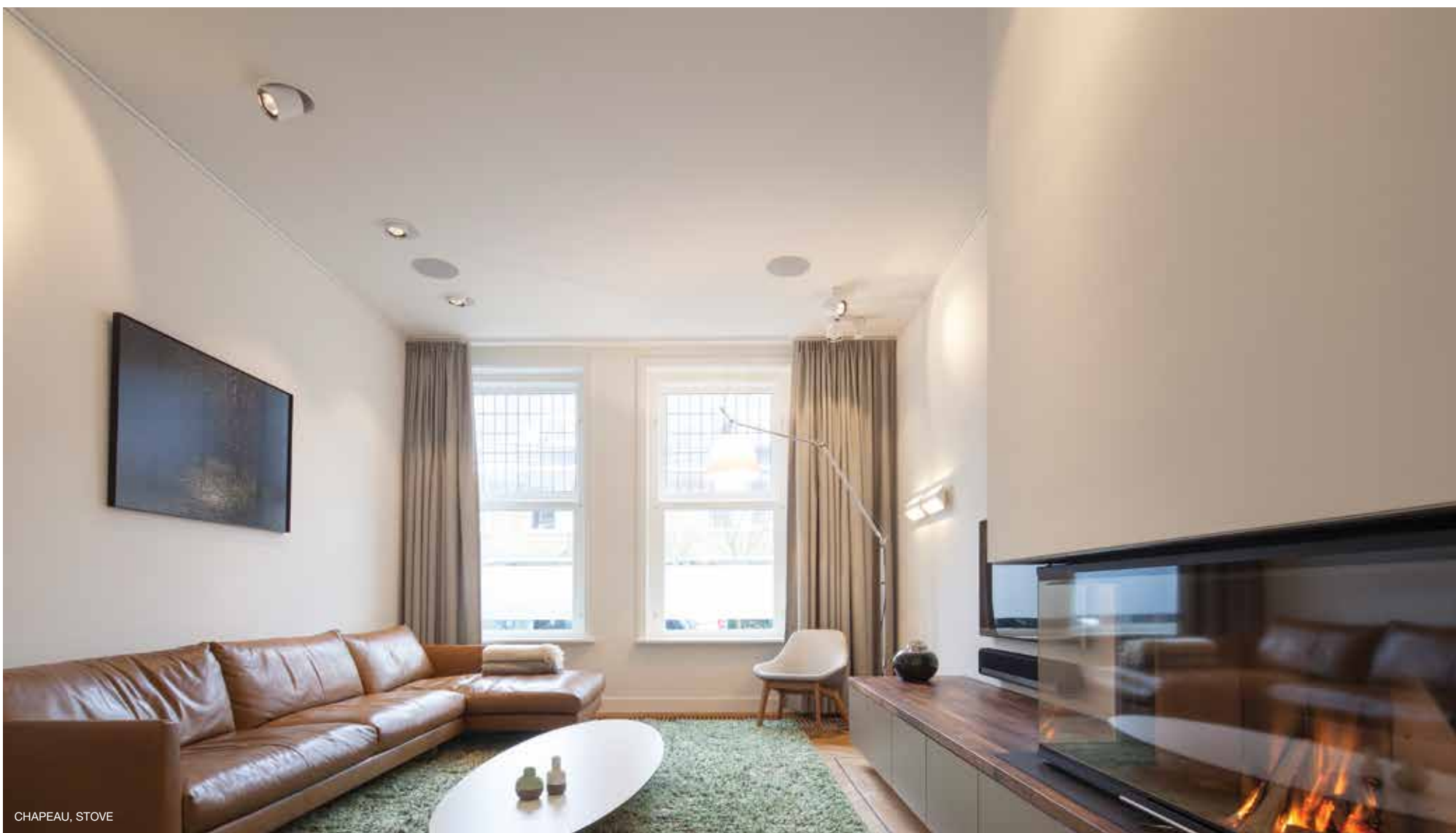
LOTIS TUBED WALL 2X



MARBUL 2X



SMART CAKE 82



MEDARD CEILING



CHAPEAU TRIMLESS



KURK SURFACE



KURK



SULFER



SMART CAKE 82
SMART SURFACE TUBED SUSPENSION



REKTOR GI



SEMIH



SMART LOTIS 82



LOTIS SQUARE



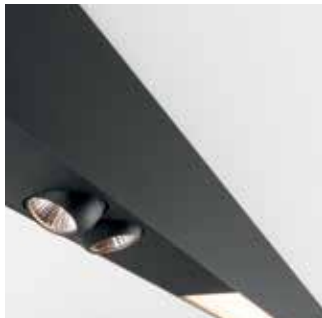
SMART CAKE 115
SMART SURFACE TUBED SUSPENSION



WINK



SL MINI NAKED



SLD50



SMART KUP 115



REKTOR RECESSED



BOLSTER RECESSED



SMART KUP 82
SMART SURFACE TUBED SHORT



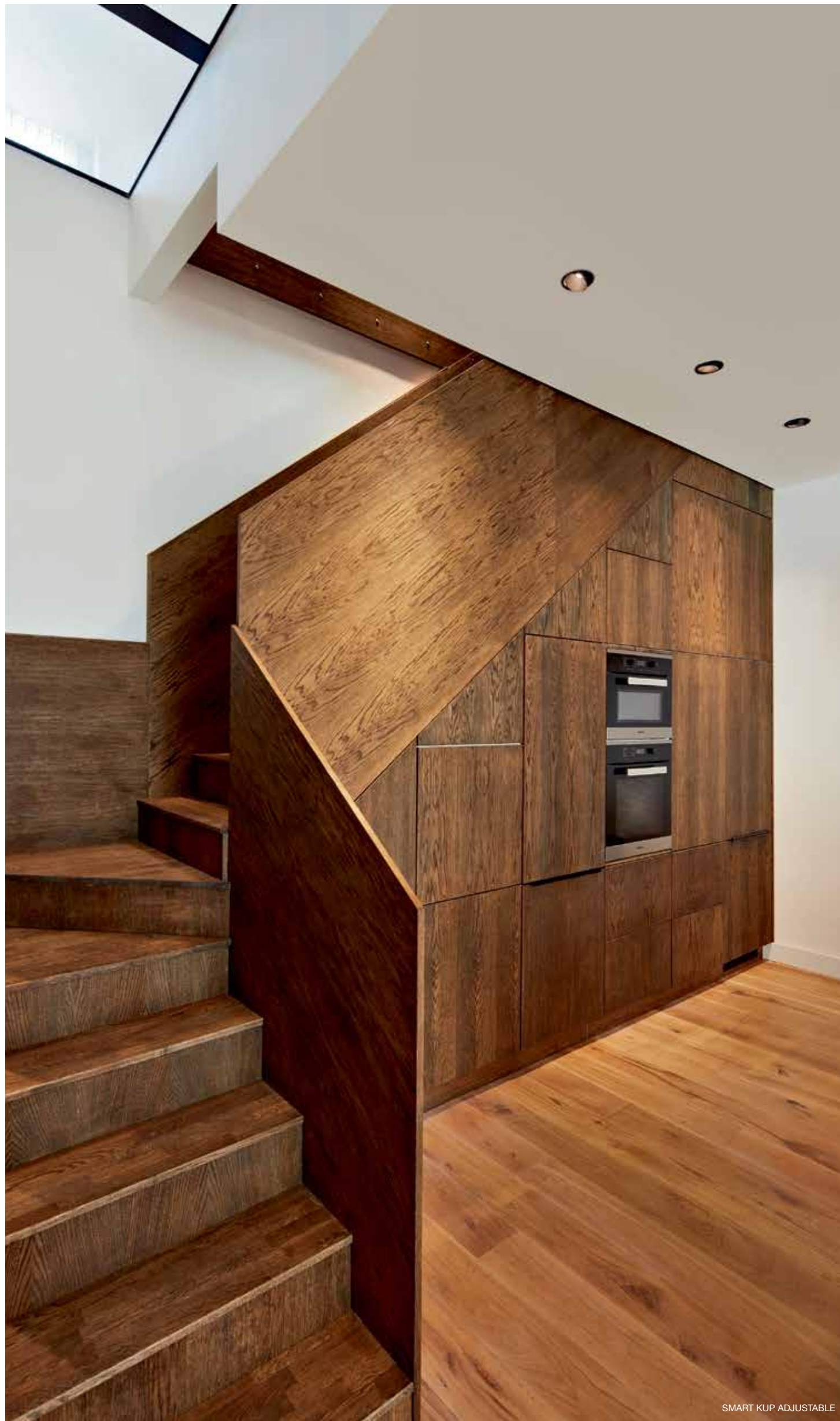
DUELL SURFACE



MP78 LEDLINE



LOTIS TUBED



SMART KUP ADJUSTABLE



WINK



SOUFFLE, KURK SURFACE



MP78 WITH REKTOR



SMART LOTIS 82
SMART SURFACE TUBED



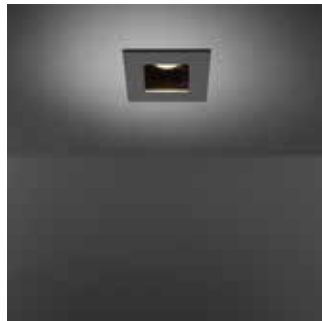
SOUFFLE SUSPENDED



SMART CAKE 115 ADJUSTABLE



SMART LOTIS 115



SLIDE



UNITED 2X



STOVE



SCOTTY ADJUSTABLE



SPOCK FOOT



MULTIPLE WITH M-LED 111



SMART CAKE



BATHROOM

SOAK UP THE LIGHT.

LOTIS TUBED



SMART CAKE



SLIDE



DUELL



MULTIPLE TRIMLESS



LOTIS SQUARE



SMART KUP



SMART CAKE 48



SLIDE



K72



LOTIS SQUARE



UNITED 1X



SULFER



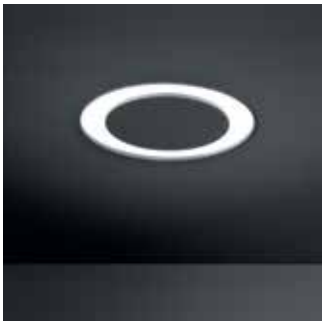
SMART CAKE 115 DIFFUSE



LOTIS TUBED WALL 1X



SMART LOTIS 48



DOWNUT



BEDROOM

RISE AND SHINE.

MEDARD, DUELL, SMART KUP



DUELL



MARBUL, MINI MULTIPLE



SEMIH



WOLLET



MARBUL 1X



MEDARD RECESSED



SPLIT LARGE



TRAPZ



SEMIH



DUELL



WOLLET



MEDARD DESK



SPOCK WALL



SMART KUP 48



SMART LOTIS



WOLLET, NOMAD



MULTIPLE TRIMLESS



SULFER



MINI MULTIPLE



ASY WINK



NOMAD



SMART KUP



ASY WINK



MINI MULTIPLE TRIMLESS WITH M-LED 70



NOMAD



NUKAV



DOZE



MARTY



ASY LOTIS 82



DUELL



SL NANO



SMART ASY LOTIS 48



EXTERIOR
OUTDOOR LIVING.

A/RJ/MOR



HIPY



BUZZE



PORTFOLIO 0.2



SKIFV



SULFER



A/RJ/MOR



GEORGE



SKIFV



FALL



DUELL WALL



LOWIE



LOWIEZE



JULIEN ROUND



KABAZ



PORTFOLIO 0.1

KEY MORE INSPIRATION?

MEET MODULAR.

MODULAR LIGHTING INSTRUMENTS — HEADQUARTERS

(For general information and sales network addresses in other countries)

Armoedestraat 71 – 8800 Roeselare – Belgium

Tel: +32 (0)51 26 56 56 – Fax: +32 (0) 51 22 80 04

welcome@supermodular.com – www.supermodular.com

Australia & New Zealand

22-38 Yurong Street

Darlinghurst NSW 2010 - Australia

Tel: +61 2 9571 8800 - Fax: +61 2 9571 88 11

welcome@modularlighting.com.au

www.supermodular.com

Belgium

Armoedestraat 71 - 8800 Roeselare

Tel: +32 (0)51 26 56 56

welcome@supermodular.com

www.supermodular.com

China

Tel: +32 479 42 91 91 - Tel: +32 (0)51 26 56 56

welcome@supermodular.com

www.supermodular.com

Denmark

Klubbiensvej 22, Pakhus 48

2150 Nordhavnen - Copenhagen

Tel: +45 3613 2100 - Fax: +45 3613 2101

welcome.denmark@supermodular.com

www.supermodular.com

France

31, Rue du Mail - 75002 Paris

Tel: +33 1 45 42 24 25 - Fax: +33 1 45 42 43 20

bonjour@supermodular.com

www.supermodular.com

Germany

Röntgenstrasse 22 - 22335 Hamburg

Tel: +49 170 760 76 07 - Tel: +49 173 920 66 62

welcome.germany@supermodular.com

www.supermodular.com

Iberia & Latin - South America

Tel: +34 610 260 420 - Tel: +32 (0)51 26 56 56

welcome.iberia@supermodular.com

www.supermodular.com

India

Tel: +32 494 88 09 20 - Tel: +32 (0)51 26 56 56

welcome@supermodular.com

www.supermodular.com

Italy

Via G. Casati 23 - 20900 Monza (MB)

Tel: +39 039 203 6242

welcome.italy@supermodular.com

www.supermodular.com

Japan

1F, 5-9-3 Minami-azabu, Minato-ku - Tokyo 106-0047

Tel: +81-3-6826-4511 - Fax: +81-3-6826-4512

welcome@modularjrp.com

www.supermodular.com

Luxembourg

5, Rue de l'Église - 1458 Luxembourg/Hollerich

Tel: +352 621 438 899 - Tel: +32 (0) 51 26 56 56

welcome@supermodular.com

www.supermodular.com

Norway

Eidsvågbakken 1 - 5105 Eidsvåg (Bergen)

Tel: +47 92 21 92 20

Nedregt 7 - 00551 Oslo

Tel: +47 928 14 481

welcome.norway@supermodular.com

www.supermodular.com

Russia

Tel: +7 919 991 30 73 - Tel: +32 (0)51 26 56 56

welcome.russia@supermodular.com

www.supermodular.com

Sweden

Studio B3 - Barnhusgatan 3 - 111 23 Stockholm

Tel: +46 8 523 29 900

welcome.sweden@supermodular.com

www.supermodular.com

Switzerland

Aargauerstrasse 250 - 8048 Zürich

Tel: +41 44 456 44 00 - Fax: +41 44 456 44 09

welcome.switzerland@supermodular.com

www.modular-lighting.ch

The Netherlands

Bouwerij 54 - 1185 XX Amstelveen

Tel: +31 (0)20 347 30 47 - Fax: +31 (0)20 347 30 48

info@modular.nl

www.modular.nl

United Kingdom

28, Leonard Street - EC2A 4BY London

Tel: +44 (0)20 7681 99 33 - Fax: +44 (0)20 7681 99 43

sales@atrium.ltd.uk

www.modular-lighting.co.uk

USA & Canada

14 Wooster Street - NY 10012 New York

Tel: +1 212 966 1399 - Fax: +1 212 966 1799

welcome.us@supermodular.com

www.supermodular.com/na

