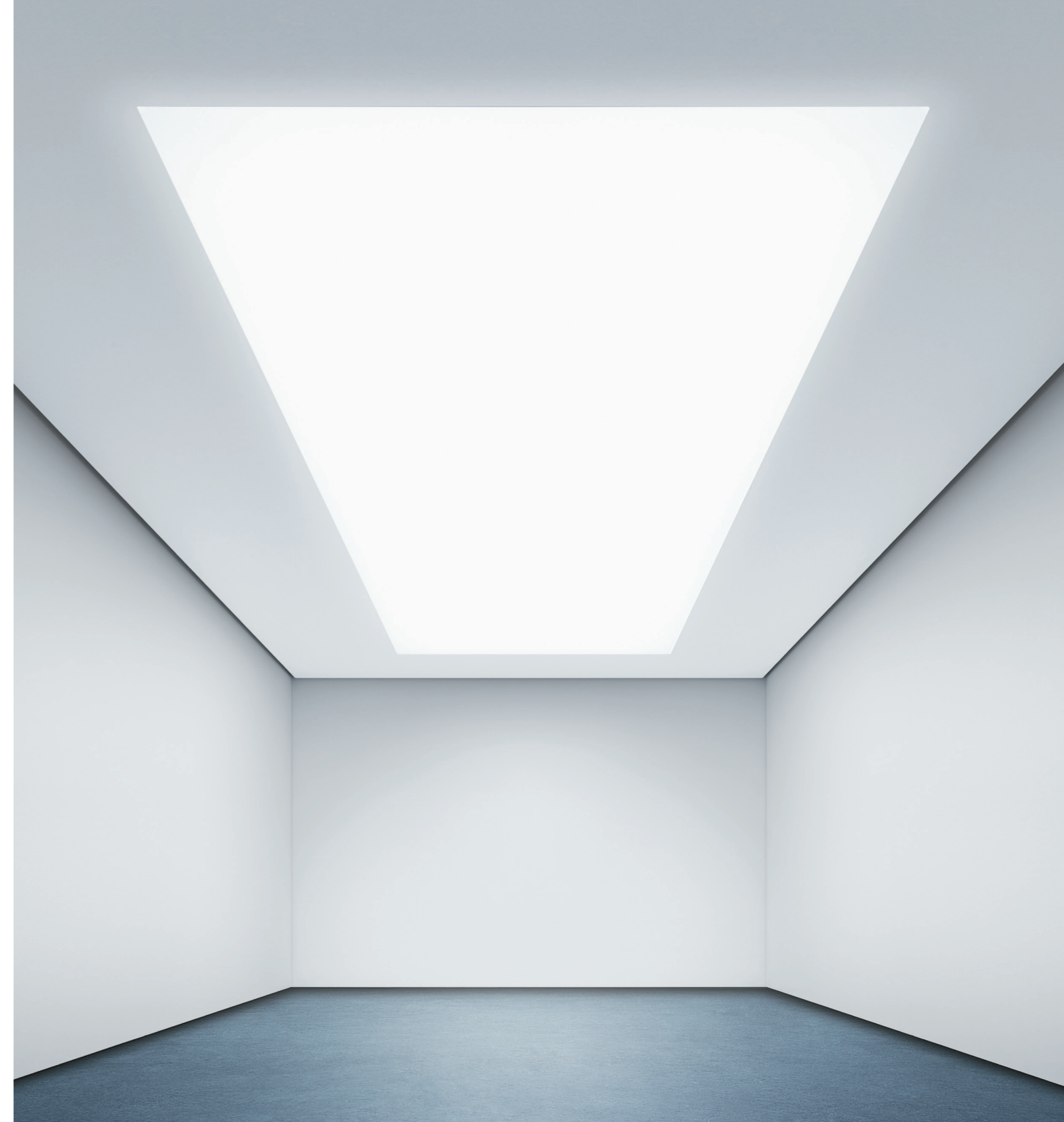


Technical Specifications

- Light level (luminance) = from 450 cd/m² (1420 lm/m²) @ 18 W/m² to 780 cd/m² (2460 lm/m²) @ 38 W/m²
- Maintenance factor = 70% at 50,000 Hours
- Color = 4000 K (3000 K and 5000 K on request)
- Color Rendering Index = > 80
- Dimming = from 10% to 100%
- Noise Reduction Coefficient = 0.75
- Textile = fire-class safety rating A2-s1, d0 (EN13501)
- Shape = square/rectangular
- Dimensions = minimum: 2.4 m x 2.4 m, maximum: 3 m x 10 m (smaller sizes on request, customizable per 1 mm)
- Thickness = 120 mm (excluding mounting and hoisting parts)
- Weight = from 90 kg (2.4 m x 2.4 m panel) to 350 kg (3 m x 10 m panel)
- Input voltage = 110-240 V / 50-60 Hz
- Control Interface = DALI
- Emergency Lighting Function = Yes (excluding high-risk areas, implementation project dependent)
- Trim edge color = RAL9011 graphite black, gloss level 30% (other colors available on request)
- Ambient temperature = 5-35 °C
- Relative humidity = < 95% non-condensing
- Indoor use only

For more information visit:

largeluminoussurfaces.com/onespace



Re-think the ceiling

Philips OneSpace luminous ceiling

PHILIPS



©2014 Koninklijke Philips Electronics N.V.

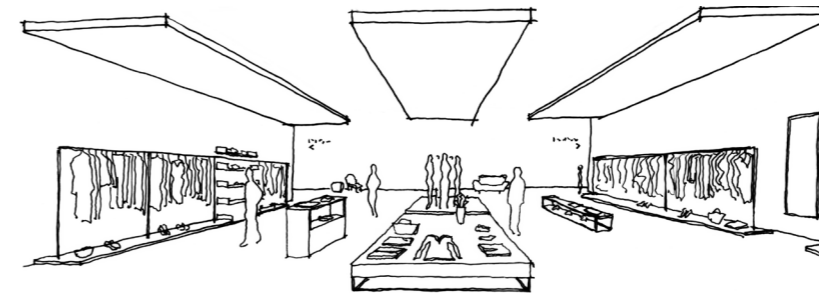
All rights reserved. Reproduction in whole or in part is prohibited without the prior written consent of the copyright owner. The information presented in this document does not form part of any quotation or contract, is believed to be accurate and reliable and may be changed without notice. No liability will be accepted by the publisher for any consequence of its use. Publication thereof does not convey nor imply any license under patent- or other industrial or intellectual property rights. Data subject to change.

Date of release: March 2014

Printed in the Netherlands / 3222 635 66976



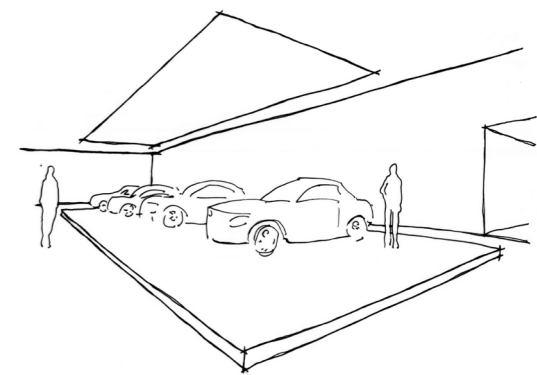
“The ceiling becomes the light,
the light becomes the ceiling.”



OneSpace offers you multiple mounting possibilities to create stand out designs in retail environments.

Superior homogeneous light

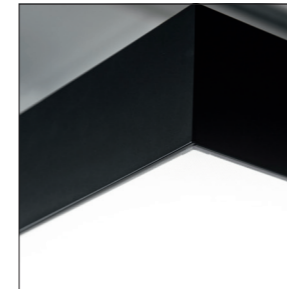
OneSpace integrates LED lights with textile to create a white light ceiling surface that hides the source of light completely. It delivers excellent uniform light distribution for an enhanced daylight experience, which makes it a great functional light to work and be under. The result is a smooth and clutter-free ceiling of beautiful homogeneous light that feels as good as it looks.



OneSpace is ideal for showcasing hero products in their true light as it delivers uniform, shadow-free illumination.

Liberating design possibilities

OneSpace opens up new minimalistic lighting design opportunities. It is literally a customizable building block for transforming any ceiling into a seamless cohesive space. For ultimate design flexibility, the ultra-thin (12 cm) panel is available in made-to-measure sizes (up to 10 m x 3 m), and can be mounted in multiple ways (free-hanging, ceiling-mounted or recessed). There is also the option to choose the panel's edge color.



Ultra-thin, 12 cm ceiling panel

Simply smarter

OneSpace is simple to install and easy to maintain. The ceiling panel is designed to allow easy access to the unsightly building services behind it, and has a covered backing that is both dust and insect repellent. OneSpace also integrates perfectly with your building management system.



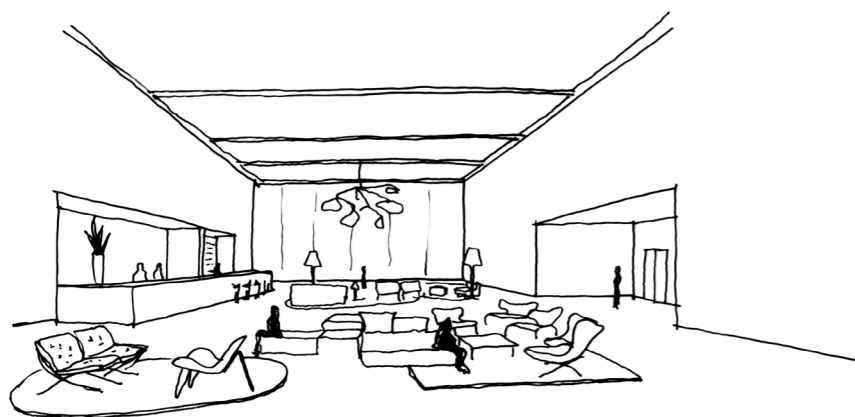
Multiple mounting possibilities

Supremely safe

OneSpace exceeds industry safety standards for both fire and mounting. The ceiling panel is composed of incombustible glass fiber and aluminium, and carries an industry-leading A2 fire-class safety rating. The mounting system also has a safety factor of over five times higher than the weight of the panel.

OneSpace – your vision

You asked us to re-think the ceiling, so we did. Now it's a blank canvas awaiting your vision. Our revolutionary OneSpace luminous ceiling is a made-to-measure panel that liberates you from the constraints of conventional ceiling design so you're free to pursue uncluttered minimalistic visions – and transform any interior into one cohesive space with beautiful homogeneous light.



OneSpace enhances people's perceptions of public spaces by delivering improved acoustics and a superior daylight experience.

Re-think your next ceiling design at:
largeluminoussurfaces.com/onespace