

KITCHEN 02

RiFRA

Rifra srl  
via Fratelli Cervi, 17/19  
20855 Gerno di Lesmo  
Milano - Italy  
tel +39.039.62845.1  
fax +39.039.62845.33  
www.rifra.com  
info@rifra.com

RiFRA  
MILANO

KITCHEN 02

**RiFRA**  
MILANO

indice / index / sommaire /inhaltsverzeichnis

ONE	_____	pag	04
KUBE	_____	pag	64
FLY	_____	pag	86
LINE	_____	pag	124
ZERO	_____	pag	152
STRUTTURA INTERNA	_____	pag	162
ATTREZZATURE	_____	pag	174
ACCESSORI INTERNI	_____	pag	186
MATERIALI	_____	pag	196

# ONE

ONE è una cucina unica.

Un'isola monolitica il cui perimetro (top, fianchi e basamento), è sagomato a 45° con uno spessore di 30 mm.

Completano il design tipico della collezione ONE, le ante, anch'esse lavorate a 45° con uno spessore di 25 mm.

Gli interni dei mobili sono laccati opaco, con guide e cassetti in acciaio inox.

*ONE is a unique kitchen.*

*A monolithic island with perimeter (top, sides, and base) at 45° beveled and 30 mm thick.*

*The typical ONE collection's design is enriched by doors, 45° beveled and 25 mm thick.*

*The interior is matt lacquered, with guides and drawers in stainless steel.*

*ONE ist eine einzigartige Küche.*

*Eine monolithische Insel mit Perimeter (platte, Seitenwände und Struktur), auf 45° geformt und 30 mm stark.*

*Das typische Design der Kollektion ONE ist von den Türen gekennzeichnet, auf 45° geformt und 25 mm stark.*

*Das Innere ist lackiert matt, mit Führungen und Schubladen aus Edelstahl.*

*ONE c'est une cuisine unique.*

*Une îlot monolithique avec périmètre (plans, côtés et base) biseauté à 45°, avec épaisseur de 30 mm.*

*Ils complètent le design typique de la collection ONE, les portes, elles aussi biseautées à 45° avec épaisseur de 25 mm.*

*Les intérieurs des meubles sont laqués mat, avec des glissières et tiroirs en acier inox.*

*ONE это уникальная кухня.*

*Монолитный остров толщиной 30 мм, который по всему периметру (топ, боковины, опора) запилен под углом 45°.*

*Дизайн, столь типичный для коллекции ONE, завершают створки толщиной 25 мм, которые также запилены под углом 45°.*

*Внутри мебель покрыта матовым лаком, ящики из нержавеющей стали оснащены доводчиками.*











**ONE:** Cucina con doppia isola rivestita in Cemento nero CC3 ,Top in Ceramic Stone Black.  
**CROWN MAJOR:** Lampada a sospensione con 30 punti luce.

**ONE:** Kitchen with double island in black concrete CC3 ,top Ceramic Stone Black.  
**CROWN MAJOR:** Hanging lamp with 30 light points.



**ONE:** Lavabo integrato in Ceramic Stone Black.

**ONE:** Quinte in cemento nero CC3.

**ONE:** *Integrated washbasin in Black Ceramic Stone.*

**ONE:** *Black concrete CC3 columns pantry.*











**ONE:** Doppia isola rivestita in Cemento nero CC3, top in DEKTON Domoos e colonne rivestite in cemento nero CC3.

**TUBE:** Lampada su misura a LED.

**ONE:** Double island in black concrete CC3, top in DEKTON Domoos and columns in black concrete CC3.

**TUBE:** LED custom-made lamp.



**ONE:** Doppia isola rivestita in Cemento nero CC3, top in DEKTON Domoos e colonne rivestite in cemento nero CC3.

**TUBE:** Lampada su misura a LED.

**ONE:** Double island in black concrete CC3, top in DEKTON Domoos and columns in black concrete CC3.

**TUBE:** LED custom-made lamp.











**ONE:** Cucina in solid surface.  
**CROWN PLANA MAJOR:** Lampada a sospensione con 12 punti luce.  
**PUFFI:** Seduta in legno.

*ONE: Kitchen in Solid Surface.  
CROWN PLANA MAJOR: Hanging lamp with 12 light points.  
PUFFI: Wooden bar stool.*



**ONE:** Cucina in solid surface con snack in rovere.  
**CROWN PLANA MAJOR:** Lampada a sospensione con 12 punti luce.

**ONE:** Kitchen in Solid Surface with wooden snack.  
**CROWN PLANA MAJOR:** Hanging lamp with 12 light points.











**ONE:** Cucina in Rovere spazzolato W07 con top in Ceramic Stone, quinte divisorie in pietra lavica.  
**CROWN PLANA MAJOR:** Lampada a sospensione con 30 punti luce.

**ONE:** Kitchen in Brushed Oak W07 with Ceramic Stone Top, dividing walls in lava stone.  
**CROWN MAJOR:** Hanging lamp with 30 light points.







**ONE:** Cucina doppia isola in cemento grigio CC1 con top in cemento grigio CC1 e libreria a giorno bianco puro lucido.

**ONE:** Double island kitchen in grey CC1 cement with grey CC1 cement top and glossy pure white open bookcase.









**ONE:** Cucina in Pietra lavica e Top in Ceramic Stone.  
**RUBINETTERIA:** Rubinetto RiFRA in acciaio satinato

**ONE:** Kitchen in lava stone with Ceramic Stone Top.  
**TAPS:** RiFRA stainless steel taps.









**ONE:** Cucina in Cemento Nero CC3, colonne laccate nero opaco, Top in Granito Nero.

**RUBINETTERIA:** Rubinetto RiFRA in acciaio satinato.

**CROWN PLANA MAJOR:** Lampada a sospensione con 30 punti luce.

**ONE:** Kitchen in Black Cement CC3, matt black lacquered columns, Black Granite Top.

**TAPS:** RiFRA stainless steel taps.

**CROWN MAJOR:** Hanging lamp with 30 light points.



# KUBE

La nuova cucina RiFRA 2018, si presenta come un Cubo, dalle forme estremamente pure, senza maniglie, e senza gole o profili visibili in nessuna parte del mobile.

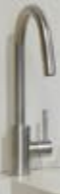
L'apertura dei cassetti avviene grazie ad un sofisticato meccanismo Push&Pull che ne consente l'apertura ad estrazione totale e chiusura con chiusura ammortizzata.

È disponibile come opzione l'elettificazione dei cassetti.

Grazie alla lavorazione del top a 30° ed ai sottili spessori delle ante, il volume della cucina è puro e senza interruzioni.

Gli interni e le guide dei cassetti laccati opachi, e disponibile in opzione in finitura Legno, concorrono a donare classe ed eleganza alla cucina.













**KUBE:** Cucina in Ceramic Stone Calacatta Oro.  
**PUFFI:** Seduta in Ceramic Stone Calacatta Oro.  
**RIO:** Lampada LED.  
**CLIMBING:** Libreria a giorno su misura in Cemento Ardesia CC2.  
**CASSETTI:** Guide dei cassetti in legno.

*KUBE: Ceramic Stone Calacatta Gold Kitchen.  
PUFFI: Ceramic Stone Calacatta Gold Stool.  
RIO: LED lamp.  
CLIMBING: Custom - made open bookcase in Cement Ardesia CC2.  
DRAWERS: Wood rails.*











**KUBE:** Cucina in Ceramic stone Calacatta Oro.  
**RIO:** Lampada LED.

*KUBE: Ceramic Stone Calacatta Gold Kitchen.  
RIO: LED lamp.*

# FLY

Il suo top col profilo a 30° esaltato fino all'esasperazione e la gola volutamente over size ne caratterizzano la collezione. Fianchi ed ante tutti lavorati a 45°, con spessore di 22 mm, creano un volume senza interruzioni. Gli interni dei mobili sono in nobilitato nero da 18 mm con le guide dei cassetti nere.

*Its 30°-beveled top and the intentionally over-sized horizontal support characterizes the collection. 45°-beveled sides and doors, 22 mm thick, create a continuous volume. The interior is in black melamine 18 mm, with black drawers' guides.*

*Die 30°-geformte Platte und die absichtliche überdimensionale Topauflage kennzeichnen die Kollektion. Seitenwände und Türen auf 45° geformt, 22 mm stark, schaffen einen kontinuierlichen Volumen. Das Innen ist aus Schwarz Melamin 18 mm, mit schwarze schubladenführungen.*

*Son top biseauté à 30° exalté jusqu'à l'exaspération et la rehausse volontairement over size en caractérisent la collection. Côtés et portes tous biseautés à 45°, avec épaisseur de 22 mm, ils créent un volume sans interruptions. Les intérieurs des meubles sont en mélamine noir de 18 mm avec les glissières noirs.*

*Коллекцию характеризуют выдающийся профиль с углом запыла 30° и встроенная ручка намеренно большого размера. Створки и боковины толщиной 22 мм и с углом запыла 45° создают непрерывное ощущение объема. Внутри элементы имеют отделку из черного меламин 18 мм и направляющие черного цвета.*













**FLY:** Doppia isola in Cemento Grigio CC1

**CROWN MAJOR:** Lampada a sospensione con 30 punti luce.

**CLIMBING:** Libreria a giorno su misura.

*FLY: Double Island in Grey Concrete CC1.*

*CROWN MAJOR: Hanging lamp with 30 light points.*

*CLIMBING: Custom - made open bookcase.*









**FLY:** Cucina in Rovere e Laccato pietra lucido, top in quarzo Unsui lucido e colonne laccato Bianco Lucido.  
**PUFF!**: seduta in argilla tortora.

*FLY: Oak and glossy stone lacquered kitchen, glossy Unsui quartz top and glossy white lacquered columns.*  
*PUFF!: seat in Clay.*











**FLY:** Cucina in Metallo Bronzo, top in granito nero assoluto e colonne in Laccato Corda lucido.  
**ADAM:** Lampada a LED in Cromo Nero.

*FLY Bronze Metal kitchen, absolute black granite top and columns in glossy Lacquered Corda.*  
*ADAM: LED lamp in Black Chrome*









**FLY:** Cucina in Laccato Bianco Puro Lucido, top in acciaio, colonne e pensili laccato lucido bianco puro.

**FLY:** *White Pure Glossy Lacquered Kitchen, steel top, columns and pure white glossy lacquered wall units.*





**FLY:** Cucina in Laccato Bianco Puro Lucido, top in acciaio, colonne e pensili laccato lucido bianco puro.

**FLY:** *White Pure Glossy Lacquered Kitchen, steel top, columns and pure white glossy lacquered wall units.*

# LINE

Semplicità. Questa è la caratteristica del progetto LINE.  
Design pulito e lineare.  
Ante con spessore di 22 mm e top con spessore di 20 mm.  
Gli interni dei mobili sono in nobilitato nero 18 mm e guide cassetto nere.

*Simplicity. This is the key of the LINE collection.  
Clean and linear design.  
Doors 22 mm thickness and top 20 mm thickness.  
Interior in melamine black 18 mm and drawers guides black.*

*Einfachheit. Das ist der Schlüssel der Kollektion LINE.  
Sauber und geradliniges Design.  
Türen Stärke 22 mm und Platte Stärke 20 mm.  
Das Innen ist aus Melamin schwarz 18 mm und Schubladenführungen schwarz.*

*Simplicité. Celle-ci la caractéristique du projet LINE.  
Design propre et linéaire. Portes avec épaisseur de 22 mm et plan avec épaisseur de 20 mm.  
Les intérieurs des meubles sont en mélaminique 18 mm noirs et glissières noir.*

*Простота. Именно она характеризует проект LINE.  
Чистый и линейный дизайн.  
Створки толщиной 22 мм с топом толщиной 20 мм.  
Внутри элементы мебели отделаны черным меламином 18 мм и имеют направляющие черного цвета.*











**LINE:** Cucina angolare in Corian con ante a libro.

**CLIMBING:** Libreria a giorno su misura.

**CROWN MAJOR:** Lampada a sospensione con 30 punti luce.

**PUFFI:** seduta.

*LINE: Corian corner kitchen with folding doors.*

*CLIMBING: Custom - Made open bookcase.*

*CROWN MAJOR: Hanging lamp with 30 light points.*

*PUFFI: Sitting.*





**LINE:** Cucina angolare in Corian con ante a libro.

**LINE:** Corian corner kitchen with folding doors.









**LINE:** Cucina laccata Bianco Lucido.

**CROWN MAJOR:** Lampada a sospensione con 30 punti luce in Alluminio spazzolato.

**PUFF!:** Seduta in Cemento Grigio CC1.

**LINE:** Glossy White lacquered kitchen.

**CROWN MAJOR:** Hanging lamp with 30 light points in brushed aluminium.

**PUFF!:** Seat in Grey Cement CC1.









**LINE:** Cucina Laccata Bianco Puro Opaco, top + alzata posteriore + break in quarzo Zeus bianco opaco, colonne laccato opaco bianco puro.

**LINE:** Kitchen Pure White matt Lacquered, matt white Zeus quartz top, splashback and snack, pure white matt lacquered columns.

# ZERO

La maniglia integrata nell'anta da 25 mm di spessore ne caratterizza la collezione.  
Il top ha uno spessore di 20 o 30 mm.  
Un design moderno che unisce estetica e funzione.  
Gli interni dei mobili sono in nobilitato nero 18 mm con le guide cassetto nere.

*The door-integrated handle thick 25mm characterizes the collection.  
The top is 20 or 30 mm thick.  
A modern design mixing beauty and function.  
Interior in melamine black 18 mm and black drawer guides.*

*Der Handgriff in der 25 mm-stark Tür integriert, kennzeichnet die Kollektion.  
Die Platte ist 20 oder 30 mm stark.  
Ein modernes Design, das Schönheit und Funktion mischt.  
Innen aus Melamin schwarz 18 mm und schwarz schubladenführungen.*

*La poignée intégrée dans la porte de 25 mm d'épaisseur en caractérise la collection.  
Le plan a épaisseur de 20 ou 30 mm.  
Un design moderne qui unit esthétique et fonction.  
Les intérieurs des meubles sont en mélaminique noir ép. 18 mm avec les glissières noir.*

*Ручка, встроенная в створку толщиной 25 мм, является отличительной чертой коллекции.  
Топ имеет толщину 20 или 30 мм.  
Современный дизайн, который сочетает в себе эстетику и функциональность.  
Внутри элементы мебели отделаны черным меламином 18 мм и имеют направляющие черного цвета.*









**ZERO:** Cucina in Rovere tinto Wengè, top + alzatina in marmo di Carrara e colonne in rovere tinto Wengè.

**ZERO:** Kitchen in Wengè stained oak, top and backsplash in Carrara marble and Wengè stained oak columns.





**ZERO:** Cucina in Rovere tinto Wengè, top + alzatina in marmo di Carrara e colonne in rovere tinto Wengè.

**ZERO:** Kitchen in Wengè stained oak, top and backsplash in Carrara marble and Wengè stained oak columns.

## STRUTTURA INTERNA / INTERNAL STRUCTURE

In base al modello di cucina RiFRA, la finitura degli interni può essere nero opaco, oppure laccata opaca, dello stesso colore dell'esterno.

Le guide delle cucine RiFRA consentono uno scorrimento del cassetto silenzioso, con estrazione totale e chiusura ammortizzata. Le guide sono di serie in acciaio satinato o in finitura nero opaco, sempre personalizzate RiFRA Milano.

*According to the RiFRA kitchen model, the interior finish can be matt black or matt lacquered in the same colour as the exterior. RiFRA kitchen rails allow the drawer to slide silently, with full extension and soft closing. The rails are standard in satin steel or matt black finish, always customized RiFRA Milano.*

*Je nach RiFRA-Küchenmodell kann die Innenausstattung mattschwarz sein. Oder matt lackiert in der gleichen Farbe wie das Äußere. Die RiFRA-Küchenauszüge ermöglichen ein geräuschloses Gleiten des Schubkastens. Die Schublade öffnet sich vollständig und schließt langsam. Die Schubladenführungen werden serienmäßig in satiniertem Stahl oder mattschwarzer Ausführung geliefert, immer personalisiert RiFRA Milano.*

*Selon le modèle de cuisine RiFRA, la finition intérieure peut être noire mate ou laquée mate dans la même couleur que l'extérieur. Les glissières de cuisine RiFRA permettent au tiroir de coulisser en silence, avec une extension complète et une fermeture en douceur. Les glissières sont de série en acier satiné ou en noir mat, toujours personnalisées RiFRA Milano.*

*В соответствии с моделью кухни RiFRA, внутренняя отделка может быть матовым черным или матовым лаком того же цвета, что и внешний вид. Направляющие кухонь RiFRA обеспечивают бесшумное скольжение выдвижного ящика с полным извлечением и мягким закрытием. Направляющие являются стандартными из satinированной стали или с матовой черной отделкой, всегда брендированной RiFRA Milano.*





**CASSETTI:** Guide Legrabox in acciaio.  
**ACCESSORI:** Acciaio inox e solid surface

**DRAWERS:** Legrabox steel rails.  
**ACCESSORIES:** Stainless steel and solid surface.





**CASSETTI:** Guide Legrabox in acciaio + acciaio e vetro.  
**ACCESSORI:** Acciaio inox e solid surface.

**DRAWERS:** Legrabox steel rails + steel and glass.  
**ACCESSORIES:** Stainless steel and solid surface.



**CASSETTI:** Guide Legrabox in acciaio + acciaio e vetro.  
**ACCESSORI:** Acciaio inox e solid surface.

**DRAWERS:** Legrabox steel rails + steel and glass.  
**ACCESSORIES:** Stainless steel and solid surface.





**CASSETTI:** Guide Legrabox laccati Nero.  
**ACCESSORI:** Acciaio inox e solid surface.

**DRAWERS:** Black lacquered Legrabox rails.  
**ACCESSORIES:** Stainless steel and solid surface.



# ATTREZZATURE / EQUIPMENT

Le colonne sono disponibili in diverse tipologie;  
Dai più semplici ripiani, ai cassettoni, per finire con le più innovative soluzioni meccaniche a doppio contenimento.  
Tutte le colonne delle cucine RiFRA, sono illuminate a LED, con accensione e spegnimento automatico, attraverso un sensore che rileva l'apertura o la chiusura dell'anta.

*The columns are available in different types;  
From the simplest shelves, to the drawers, to finish with the most innovative mechanical solutions with double containment.  
All the RiFRA kitchen columns are LED-lit, with automatic switch-on and switch-off, through a sensor that picks up the opening or closing of the door.*

*Die Hochschränke sind in verschiedenen Ausführungen erhältlich; von einfachen Regalen, Schubladen bis zu den innovativsten mechanischen Lösungen mit Doppel-Einschränkung.  
Alle Hochschränke der Küchen RiFRA, sind LED-beleuchtet, mit automatischer Schalter über einen Sensor, der das Öffnen oder Schließen der Tür erkennt.*

*Les colonnes sont disponibles en différents types ;  
Des étagères les plus simples aux tiroirs, pour finir avec les solutions mécaniques les plus innovantes à double rangement.  
Toutes les colonnes des cuisines du RiFRA sont éclairées par des LED, avec allumage et arrêt automatique, grâce à un détecteur qui détecte l'ouverture ou la fermeture de la porte.*

*Колонны доступны в разных вариациях.  
От самых простых полок до ящиков, и завершением самыми инновационными механическими решениями двойной вместимости.  
Все колонны кухни RiFRA, освещены светодиодами, с автоматической функцией включения и выключения, через датчик, который определяет открытие или закрытие створки.*



## Tirello / *Drawer*



KITCHEN 02

**TIRELLO:** Cassetto estraibile con guide Legrabox in acciaio.

**DRAWER:** Pull - out drawer with legrabox steel rails.

## Magic corner



## Le mans



## Cestoni / *Jumbo drawers*



KITCHEN 02

**COLONNE:** Attrezzate, cestoni acciaio e vetro, illuminazione LED.

**COLUMNS:** Equipped, steel and glass drawers, LED illumination.

181

# Tandem



KITCHEN 02

**TANDEM:** Meccanismo estraibile, cassetti con guide Legrabox in acciaio con illuminazione LED.

**TANDEM:** Pull - out mechanism, drawers with legrabox steel rails and LED lightning.

183

# Convoy



KITCHEN 02

**CONVOY:** Meccanismo estraibile, cassetti con guide Legrabox in acciaio e vetro con illuminazione LED.

**CONVOY:** Pull - out mechanism, drawers with legrabox steel and glass rails and LED lightning.

185

## ACCESSORI INTERNI / INTERNAL ACCESSORIES

Gli interni delle cucine RiFRA sono personalizzabili con gli esclusivi accessori in Corian ed Acciaio: Porta Pentole, porta posate, porta Spezie, Porta Pasta ecc...  
Tutto è organizzato ed in ordine.

*The interiors of RiFRA kitchens can be customized with the exclusive accessories in Corian and Steel: pot holders, cutlery holders, spice holders, pasta holders, etc....  
Everything is well organized.*

*Der Innenraum kann mit exklusiven Accessoires Corian und Stahl gefertigt werden:  
Tellerhalter, Besteckkasten, Gewürzeinsatz, Pasta Dose etc.  
Alles ist organisiert und in Ordnung.*

*Les intérieurs des cuisines RiFRA peuvent être personnalisés avec les accessoires exclusifs en Corian et en Acier : porte-pot, porte-couverts, porte-épices, porte-pâtes, etc...  
Tout est organisé et en ordre.*

*Внутренние детали могут быть персонализированы с эксклюзивными аксессуарами из акрилового камня и стали:  
держатель для кастрюль, держатель для столовых приборов, стойка для специй, стойка для пасты и т.д. Все организовано и все в порядке.*











KITCHEN 02 **PATTUMIERA:** Raccoglitore pattumiera con coperchi e base porta secchi in alluminio antimpronta.

**RECYCLING BIN:** *Recycling bin with lid and sorting tray in anti print aluminium.*

# MATERIALI / MATERIALS

Ricerca, innovazione, lo studio di nuovi prodotti, l'attenzione al mercato, il gusto italiano nella scelta delle finiture, la coerenza e l'eleganza delle composizioni, sono una caratteristica costante di RiFRA.

*Research, innovation, the study of new products, attention to the market, the Italian taste in the choice of finishes: these are the main features of the company's products, the coherence and elegance of the compositions are a constant feature of RiFRA.*

*La recherche, l'innovation, l'étude de nouveaux produits, l'attention au marché, le goût italien dans le choix des finitions, la cohérence et l'élégance des compositions, sont une caractéristique constante du RiFRA.*

*Forschung, Innovation, die Entwicklung neuer Produkte, die Aufmerksamkeit für den Markt, der italienische Geschmack bei der Wahl der Oberflächen, die Konsistenz und Eleganz der Kompositionen sind ein ständiges Merkmal von RiFRA.*

## LACCATI / LACQUERS

G: LACCATI LUCIDI / GLOSSY LACQUERED  
M: LACCATI OPACHI / MATT LACQUERED

			
BIANCO PURO G031 - lucido M031 - opaco	BIANCO G032 - lucido M032 - opaco	GRIGIO NUVOLA G019 - lucido M019 - opaco	GRIGIO ARGENTO G016 - lucido M016 - opaco
			
GRIGIO MANHATTAN G017 - lucido M017 - opaco	CEMENTO G020 - lucido M020 - opaco	FERRO G021 - lucido M021 - opaco	CENERE G018 - lucido M018 - opaco
			
OLIVA G042 - lucido M042 - opaco	VERDE SALVIA G006 - lucido M006 - opaco	VERDE PRATO G005 - lucido M005 - opaco	VERDE PETROLIO G004 - lucido M004 - opaco
			
VERDE BOSCO G010 - lucido M010 - opaco	ARMY GREEN G009 - lucido M009 - opaco	POMICE G022 - lucido M022 - opaco	PIETRA G047 - lucido M047 - opaco
			
LIGHT STONE G036 - lucido M036 - opaco	DARK STONE G046 - lucido M046 - opaco	LAVANDA G003 - lucido M003 - opaco	PRUGNA G002 - lucido M002 - opaco
			
VINACCIA ANTICO G001 - lucido M001 - opaco	ROSSO G039 - lucido M039 - opaco	FRAGOLA G011 - lucido M011 - opaco	LAMPONE G012 - lucido M012 - opaco

LACCATI /  
LACQUERS

G: LACCATI LUCIDI / GLOSSY LACQUERED  
M: LACCATI OPACHI / MATT LACQUERED



TORTORA  
G023 - lucido  
M023 - opaco



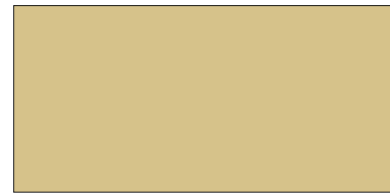
SABBIA  
G048 - lucido  
M048 - opaco



SAHARA  
G038 - lucido  
M038 - opaco



CORDA  
G049 - lucido  
M049 - opaco



MASTICE  
G024 - lucido  
M024 - opaco



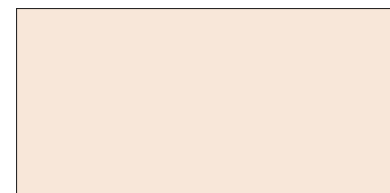
ARGILLA  
G025 - lucido  
M025 - opaco



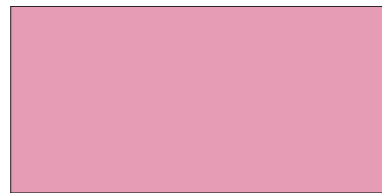
BIANCO SPINO  
G026 - lucido  
M026 - opaco



VINACCIA  
G027 - lucido  
M027 - opaco



ROSA ANTICO  
G037 - lucido  
M037 - opaco



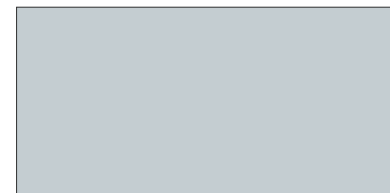
GLICINE  
G013 - lucido  
M013 - opaco



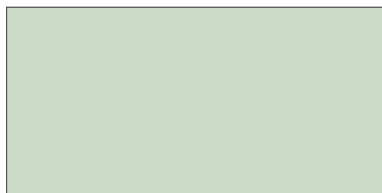
PERVINCA  
G014 - lucido  
M014 - opaco



VIOLA  
G040 - lucido  
M040 - opaco



AZZURRO POLVERE  
G029 - lucido  
M029 - opaco



CELESTE  
G028 - lucido  
M028 - opaco



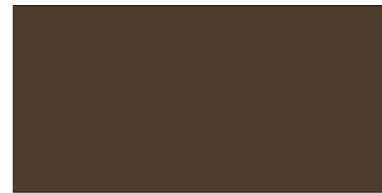
VERDE LAGO  
G030 - lucido  
M030 - opaco



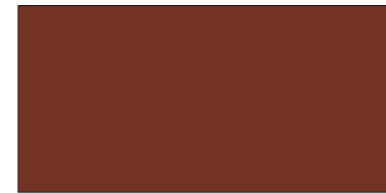
OCEANO  
G015 - lucido  
M015 - opaco



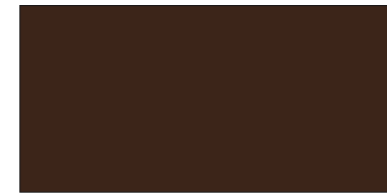
NIGHT BLUE  
G041 - lucido  
M041 - opaco



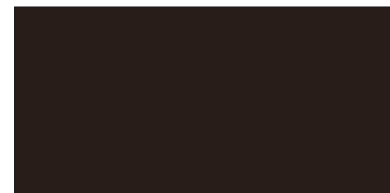
CACAO  
G045 - lucido  
M045 - opaco



CRETA  
G044 - lucido  
M044 - opaco



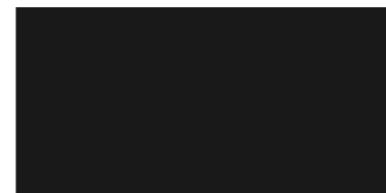
CAFFÈ  
G043 - lucido  
M043 - opaco



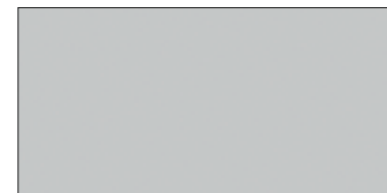
MARRONE  
G008 - lucido  
M008 - opaco



PIOMBO  
G033 - lucido  
M033 - opaco



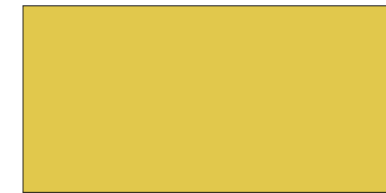
NERO  
G034 - lucido  
M034 - opaco



ALLUMINIO OPACO  
M035 - opaco

LACCATI /  
LACQUERS

G: LACCATI LUCIDI / GLOSSY LACQUERED  
M: LACCATI OPACHI / MATT LACQUERED

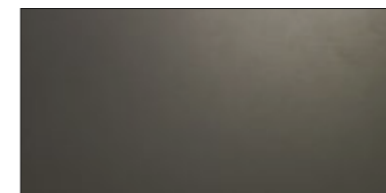


SENAPE  
G007 - lucido  
M007 - opaco

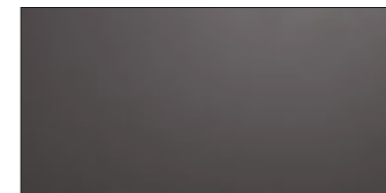


BRUNITO  
G051 - lucido  
M051 - opaco

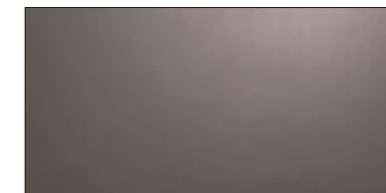
LACCATI METALLIZZATI LISCI /  
SMOOTH METALIZED LACQUERED



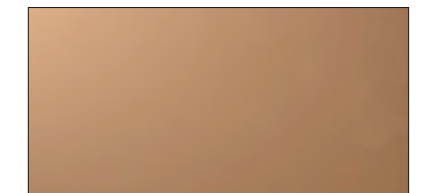
LACCATO METALLIZZATO LISCIO  
N01



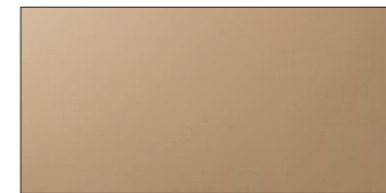
LACCATO METALLIZZATO LISCIO  
N02



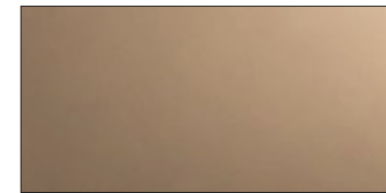
LACCATO METALLIZZATO LISCIO  
N03



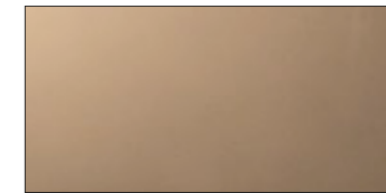
LACCATO METALLIZZATO LISCIO  
N04



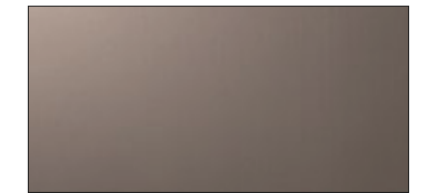
LACCATO METALLIZZATO LISCIO  
N05



LACCATO METALLIZZATO LISCIO  
N06



LACCATO METALLIZZATO LISCIO  
N07



LACCATO METALLIZZATO LISCIO  
N08



LACCATO METALLIZZATO LISCIO  
N09



LACCATO METALLIZZATO LISCIO  
N10

LACCATI METALLIZZATI TEXTURIZZATI /  
TEXTURED METAL LACQUERED



LACCATO METALLIZZATO  
TEXTURIZZATO  
T01



LACCATO METALLIZZATO  
TEXTURIZZATO  
T02



LACCATO METALLIZZATO  
TEXTURIZZATO  
T03



LACCATO METALLIZZATO  
TEXTURIZZATO  
T04



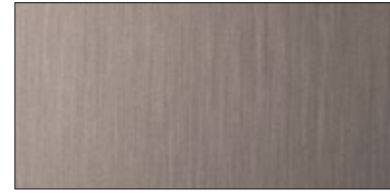
LACCATO METALLIZZATO  
TEXTURIZZATO  
T05



LACCATO METALLIZZATO  
TEXTURIZZATO  
T06



LACCATO METALLIZZATO  
TEXTURIZZATO  
T07



LACCATO METALLIZZATO  
TEXTURIZZATO  
T08



LACCATO METALLIZZATO  
TEXTURIZZATO  
T09



LACCATO METALLIZZATO  
TEXTURIZZATO  
T10

FINITURE SPECIALI: CEMENTO /  
SPECIAL FINISHES: CEMENT



CEMENTO SPATOLATO GRIGIO  
CC1



CEMENTO SPATOLATO ARDESIA  
CC2



CEMENTO SPATOLATO NERO  
CC3

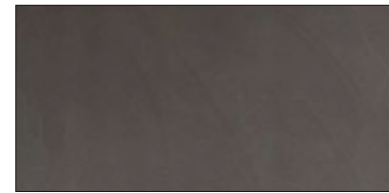
FINITURE SPECIALI: METALLI LISCI /  
SPECIAL FINISHES: METALS



FERRO 1  
ML1



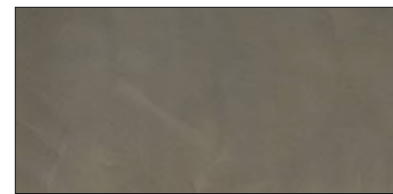
FERRO 2  
ML2



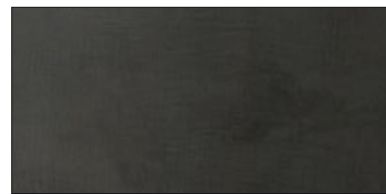
RAME  
ML3



OTTONE  
ML4

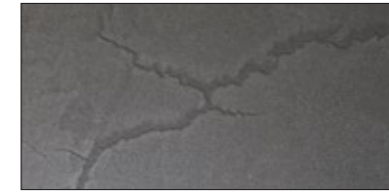


BRONZO  
ML5



GHISA  
ML6

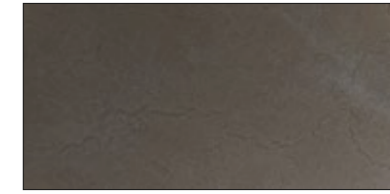
FINITURE SPECIALI: METALLI CRACKLE /  
SPECIAL FINISHES: CRACKLE METALS



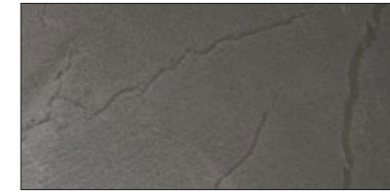
FERRO 1 CRACKLE  
MC1



FERRO 2 CRACKLE  
MC2



RAME CRACKLE  
MC3



OTTONE CRACKLE  
MC4



BRONZO CRACKLE  
MC5

FINITURE SPECIALI: METALLI RETATI /  
SPECIAL FINISHINGS: MESH METALS



FERRO 1 RETATO  
MR1



RAME RETATO  
MR3

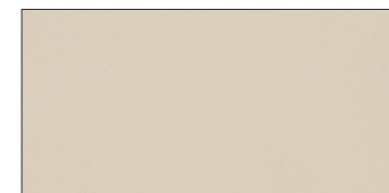


OTTONE RETATO  
MR4

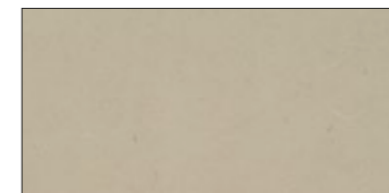


BRONZO RETATO  
MR5

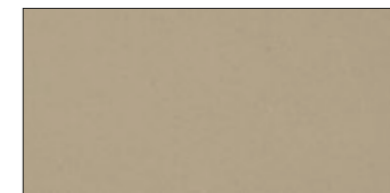
FINITURE SPECIALI: ARGILLA /  
SPECIAL FINISHES: CLAY



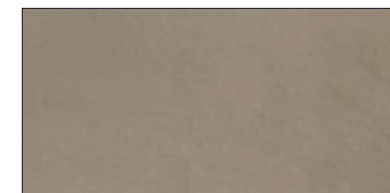
ARGILLA NEVE  
A01



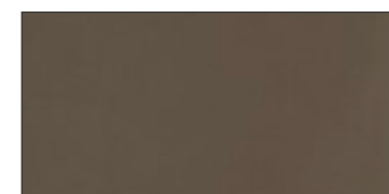
ARGILLA POLVERE  
A02



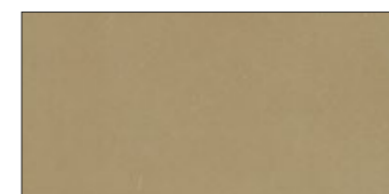
ARGILLA AVORIO  
A03



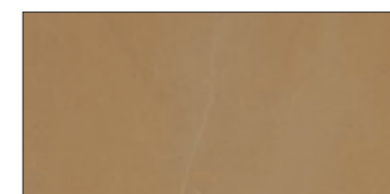
ARGILLA TORTORA  
A04



ARGILLA CIOCCOLATO  
A05



ARGILLA SABBIA  
A07



ARGILLA MATTONE  
A08

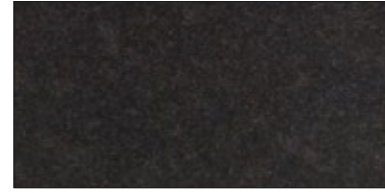
ALTRE RIFINITURE SPECIALI /  
OTHER SPECIAL FINISHES



ORO ROSA  
ORR



ORO GIALLLO  
ORG



PIETRA LAVICA  
PL

STANDARD WOODS /  
STANDARD WOODS



ROVERE SPAZZOLATO TINTO  
BIANCO  
W01



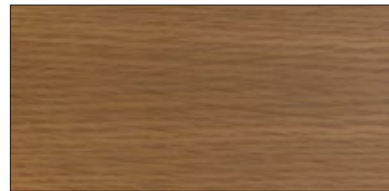
ROVERE SPAZZOLATO TINTO  
GRIGIO  
W05



ROVERE SPAZZOLATO TINTO  
WENGÈ  
W06



ROVERE SPAZZOLATO TINTO  
NATURALE  
W07



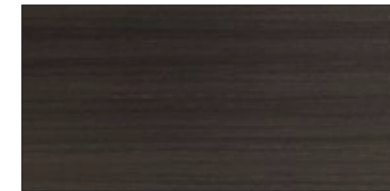
ROVERE SPAZZOLATO TINTO TEAK  
W08



ROVERE SPAZZOLATO TINTO NERO  
W08

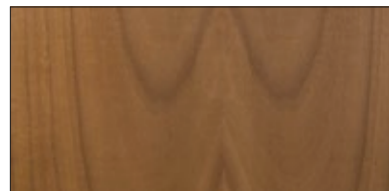


NOCE CANALETTO  
NC

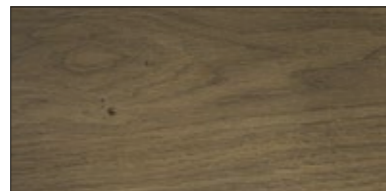


NOCE TINTO GRIGIO  
NG

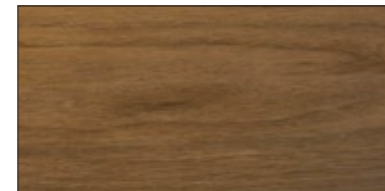
SPECIAL WOODS /  
SPECIAL WOODS



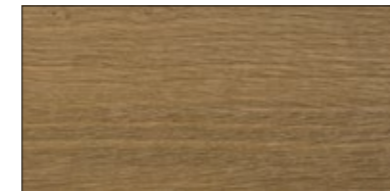
NOCE FIAMMATO  
E01



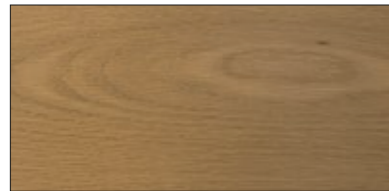
ROVERE ANTICATO GRIGIO  
E02



ROVERE ANTICATO MIELE  
E03



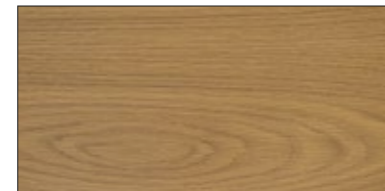
ROVERE ANTICATO NATURALE  
E04



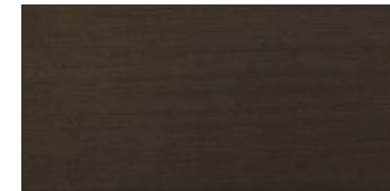
ROVERE FIAMMATO DECOLORATO  
E05



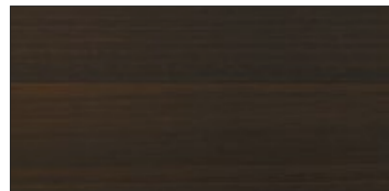
ROVERE FIAMMATO GRIGIO  
E06



ROVERE FIAMMATO MIELE  
E07



WENGÈ  
E08



EUCALIPTO  
E09

SOLID SURFACE /  
SOLID SURFACE



SOLID SURFACE

ACCIAIO /  
STAINLESS STEEL



ACCIAIO INOX LUCIDO  
IL

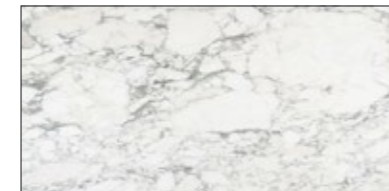


ACCIAIO INOX SATINATO  
IS

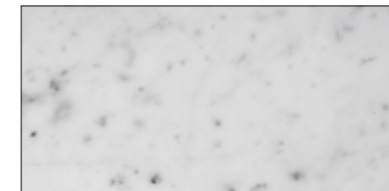


ACCIAIO QUARZO SATIN  
QS

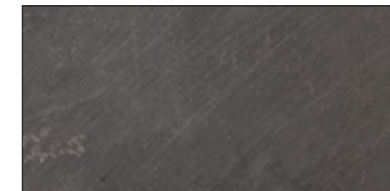
PIETRE /  
STONES



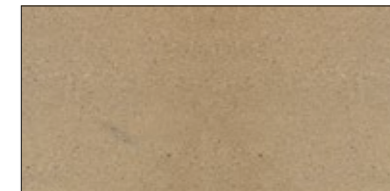
ARABESCATO STAUTARIO  
S20



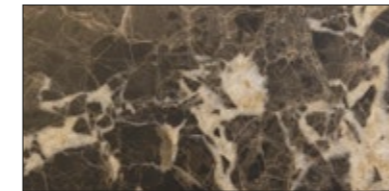
BIANCO CARRARA  
S21



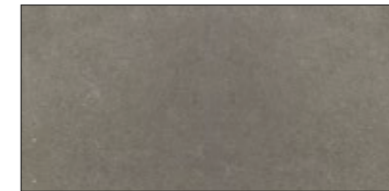
TYMANFAYA  
S34



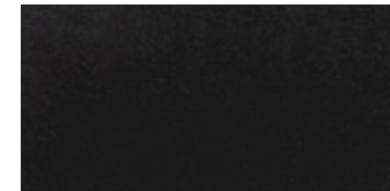
PIETRA DI TAHIR  
S33



EMPERADOR  
S32



GRIGIO ASH  
S25



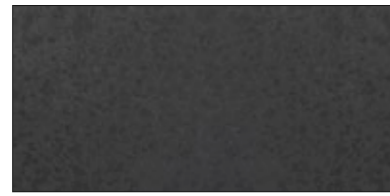
NERO ASSOLUTO  
S28

CERAMIC STONE /  
CERAMIC STONE



CALCE GRIGIO

C01



CALCE NERO

C02



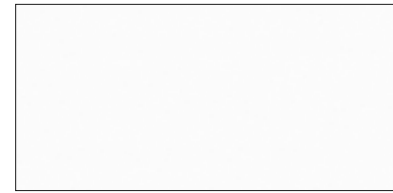
CALCE TORTORA

C03



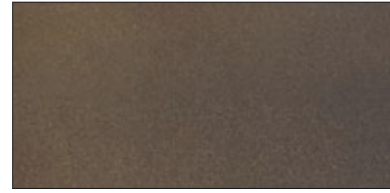
CALACATTA ORO VENATO

C04



ARCTIC WHITE

C05



BARRO

C06



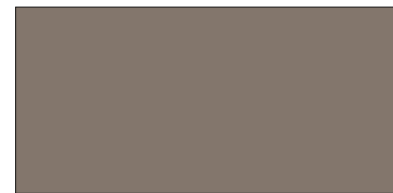
BASALT BLACK

C07



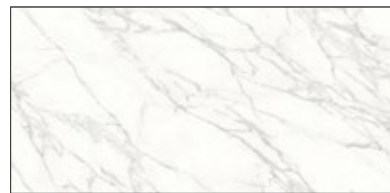
BIANCO CARRARA

C08



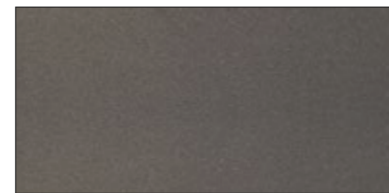
BOMBON

C10



CALACATTA SILK / LUCIDO

C11 - C12



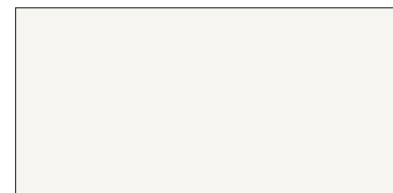
CEMENT

C13



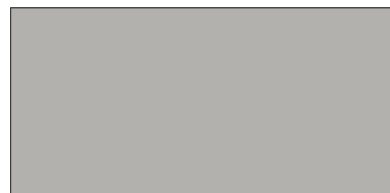
ESTUARIO SILK / LUCIDO

C14 - C15



JUST WHITE

C16



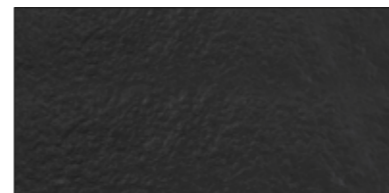
LUNA

C17



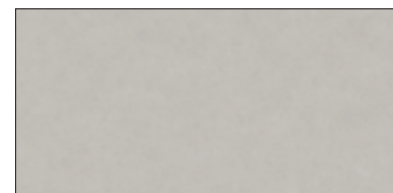
NERO

C18



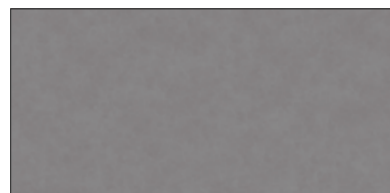
NERO ZIMBAWE

C19



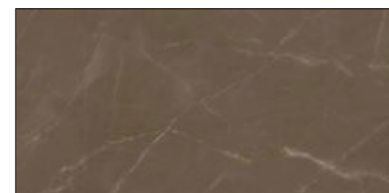
PIETRA DI LUNA

C20



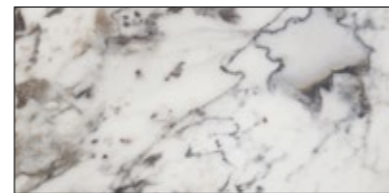
PIETRA DI PIOMBO

C21



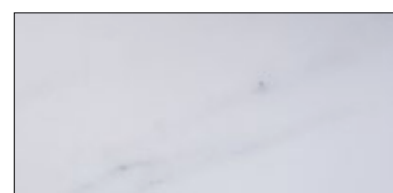
PULPIS SILK / LUCIDO

C22 - C23



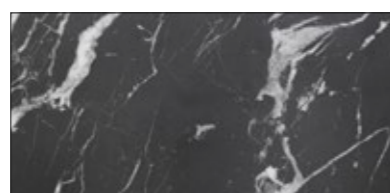
CAPRAIA

C33



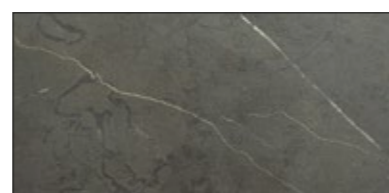
STATUARIO OPACO / LUCIDO

C30 - C25



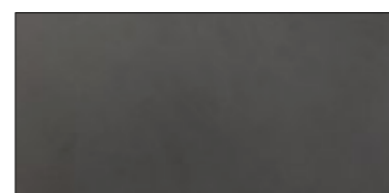
ELEGANT BLACK SILK / LUCIDO

C35 - C32



IMPERIALE

C29



BLACK

C24

CERAMIC STONE /  
CERAMIC STONE



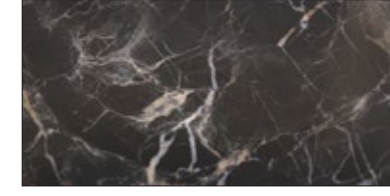
LAVA

C26



TABOR

C27



SAINT LAURANT

C31



ZAHA STONE

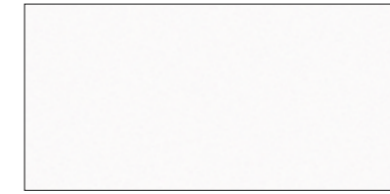
C36

QUARZI /  
QUARTZES



ICONIC BLACK

Q34



ICONIC WHITE

Q35



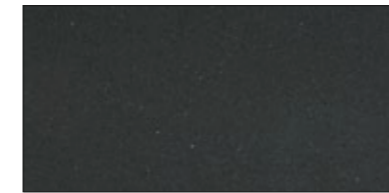
NEGRO TEBAS

Q36



GRIS ANTRACITE

Q07



IMPERIAL BLACK

Q08



BLANCO ZEUS EXTREME  
LUCIDO

Q37



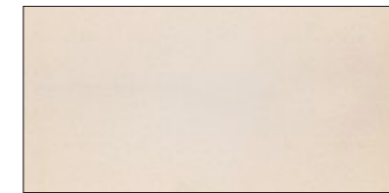
BLANCO ZEUS EXTREME  
OPACO

Q38



GRIS EXPO

Q24



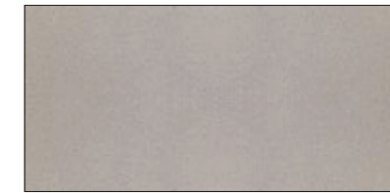
HAIKU

Q25



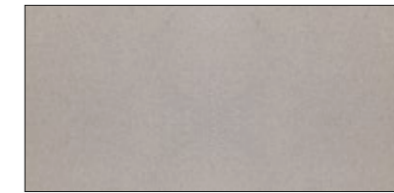
UNSUI

Q26



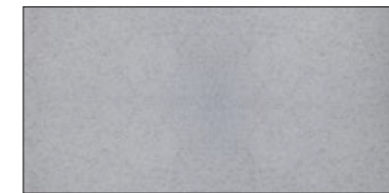
KENSHO LUCIDO

Q39



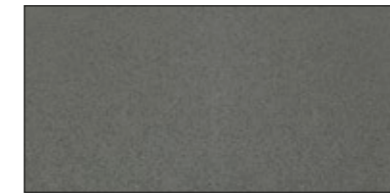
KENSHO OPACO

Q39



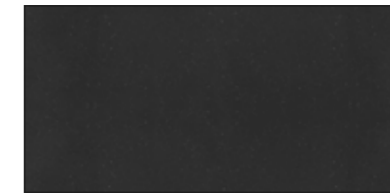
NETTUNO

Q41



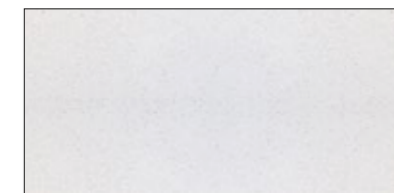
CEMENTO SPA

Q30



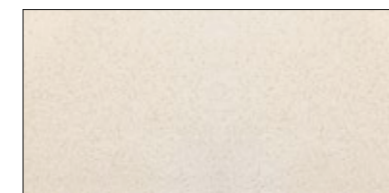
NERO VELLUTO

Q42



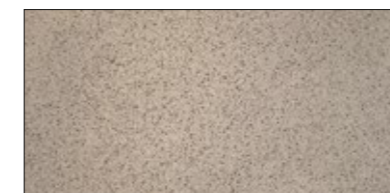
BLANCO SAL

Q43



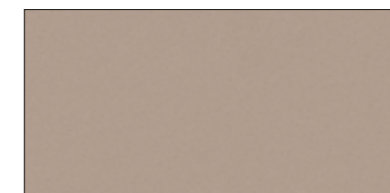
CREMA CHIARA

Q44



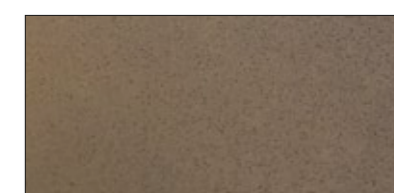
ELBA

Q45



CANDIA

Q46



ZANTE

Q47

QUARZITI /  
QUARTZITES



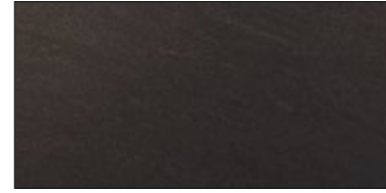
GAJA MOON SATINATO

Z01



GAJA MOON SANDLITE

Z02



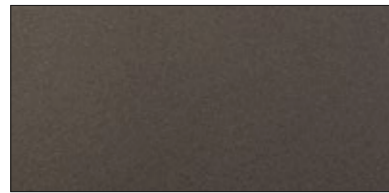
IPANEMA BLACK SATINATO

Z05



IPANEMA BLACK SANDLITE

Z06



PACIFIC GRAY SATINATO

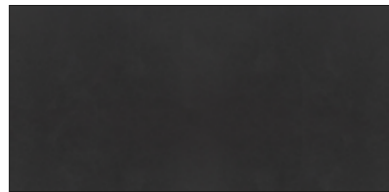
Z07



PACIFIC GRAY SANDLITE

Z08

DEKTON /  
DEKTON



DOMOOS

D20



GALEMA

D26



SIRIUS

D22



ZENITH

D23

**our designers :**

RiFRA LAB

**art direction and graphic :**

RiFRA LAB

**photo :**

- Beppe Raso  
- RiFRA LAB

**styling :**

- RiFRA LAB

printed in italy  
copyright © rifra srl 2020

**seguici su: / follow us on:**



<https://www.facebook.com/Riframilano>  
<https://www.instagram.com/riframilano>  
<https://www.youtube.com/rifra>

**sito / website**

<http://www.rifra.com>

**blog**

<http://www.blog.rifra.com>