



# m o o o i<sup>®</sup> c a r p e t s

Discover a world  
of opportunities







**Discover a world  
of opportunities**







*Moooli Carpets presents*

## A WORLD OF OPPORTUNITIES

**T**he unstoppable growth of Moooli Carpets seems never ending. Ever since we first started Moooli Carpets in 2015 we keep improving our product and service so you as our client will always find the perfect match. Last year we presented The Extinct Animals Collection as part of Moooli's new design language. Celebrating the richness of nature, Moooli imagined carpet designs based on textures, colors and shapes of imaginative Extinct Animals.

At Moooli Carpets we also believe in the beauty of surprise. Therefore, we came up with a brand new Local introduction in Stockholm February 2019. The launch of a new collection "The Nordic Collection" made by four well-known International designers based in the Nordics. From now on, we will launch our novelties all year round, celebrating our novelties however and whenever we think is best.

This year during Salone del Mobile 2019 you may expect exciting new collections by Dutch designers Mae Engelgeer and Claire Vos, so keep your eyes open!

At Moooli Carpets we constantly improve our printing technique and scout for the best materials and products to stay up-to-date towards the international market. Our goal is to keep serving our global clients on exciting hospitality projects. We have endless possibilities to find the perfect match for any interior. Innovative, custom and unique at the same time.

Discover a world of opportunities and celebrate  
A life extraordinary!







**NEW SIGNATURE COLLECTIONS**

EXTINCT ANIMALS by Mooodi	8
QUIET by Mooodi	30
<b>NORDIC</b>	<b>36</b>
MAZE by Note	
CRYSTAL by Luca Nichetto	
REFLECTIONS by Ingimar Einarsson	
WALKING ON CLOUDS by Front	
<b>YARN BOX</b> by Claire Vos	<b>46</b>
<b>SWELL</b> by Mae Engelgeer	<b>48</b>
<b>AIRES &amp; AXEL</b> by Megan Grehl	<b>50</b>
<b>LE TEMPLE</b> by Maison Christian Lacroix	<b>52</b>
<b>NEW URBAN MANDALA'S</b> by Neal Peterson	<b>54</b>

**CUSTOM COLLECTION**

<b>YOUR OWN DESIGN</b>	<b>56</b>
<b>WHY MOOOI CARPETS?</b>	<b>62</b>
<b>COLORS &amp; MATERIALS</b>	<b>64</b>
<b>SIGNATURE DESIGNERS</b>	<b>66</b>
<b>SIGNATURE RUG COLLECTION</b>	<b>68</b>
<b>SIGNATURE BROADLOOM COLLECTION</b>	<b>80</b>









*Introducing the*

# EXTINCT ANIMALS COLLECTION

*by Moooli*

Since the dawn of human civilisation, curiosity and a great sense of adventure have tempted explorers to undertake risky adventures in search of the unknown. New worlds were waiting to be discovered by those who persevered and survived the dangers along the way. The life of an explorer was tinged with fear and excitement, hard work and physical discomfort. After months or sometimes years of tainted travels, we can only imagine the rush of adrenaline going through a sailor who spotted new land, or an explorer who looked into the eyes of an unknown animal. We can merely try to picture it ...

Some adventurers set out with a purpose: they would seek a golden treasure to change their destiny, the fountain of youth to live forever. They chased their dream with youthful dedication, possessed by a great desire for adventure, seeking a life of excitement. What they actually discovered were much greater treasures for humanity: fish that could fly, amazing-looking birds that sang like angels and underwater creatures glowing in the dark! If safely returned to what they called civilization, they reported of remarkable new worlds and the rich beauty of exotic, diverse and extraordinary animals. Birds with plumage the colour of the rainbow, cute smiling creatures hanging high up in florid trees, breath-taking animals of all dimensions began to populate new myths and stories. Even though most of these animals were never seen again, the variety and diversity of nature exceeded imagination and puzzled even the most sceptical.

A collection of ten beautiful carpets bring some Extinct Animals back into our lives, untamed and beautiful and printed on extremely soft and comfy materials.





Aristo Quagga Rug

BY MOOOI



### ARISTO QUAGGA RUG



Cut in a hexagon shape, like a precious stone, the *Aristo Quagga* rug bears a pattern found in the mane of one of the regal cousins of the zebra. Moulded into a kaleidoscopic pattern, the rug sports hues of brown, grey, white and black.



### ARMOURED BOAR RUG



The *Armoured Boar* carpet absorbs the animal's nature without compromise. Just like the powerful outfit of an *Armoured Boar*, it gives an untamed first impression. Looking closer, though, you'll see its soft side: dark floral motifs enclosed by a precious, silvery glow.





Armoured Boar Rug

BY MOOOI





Bearded Leopard Rug

BY MOOOI

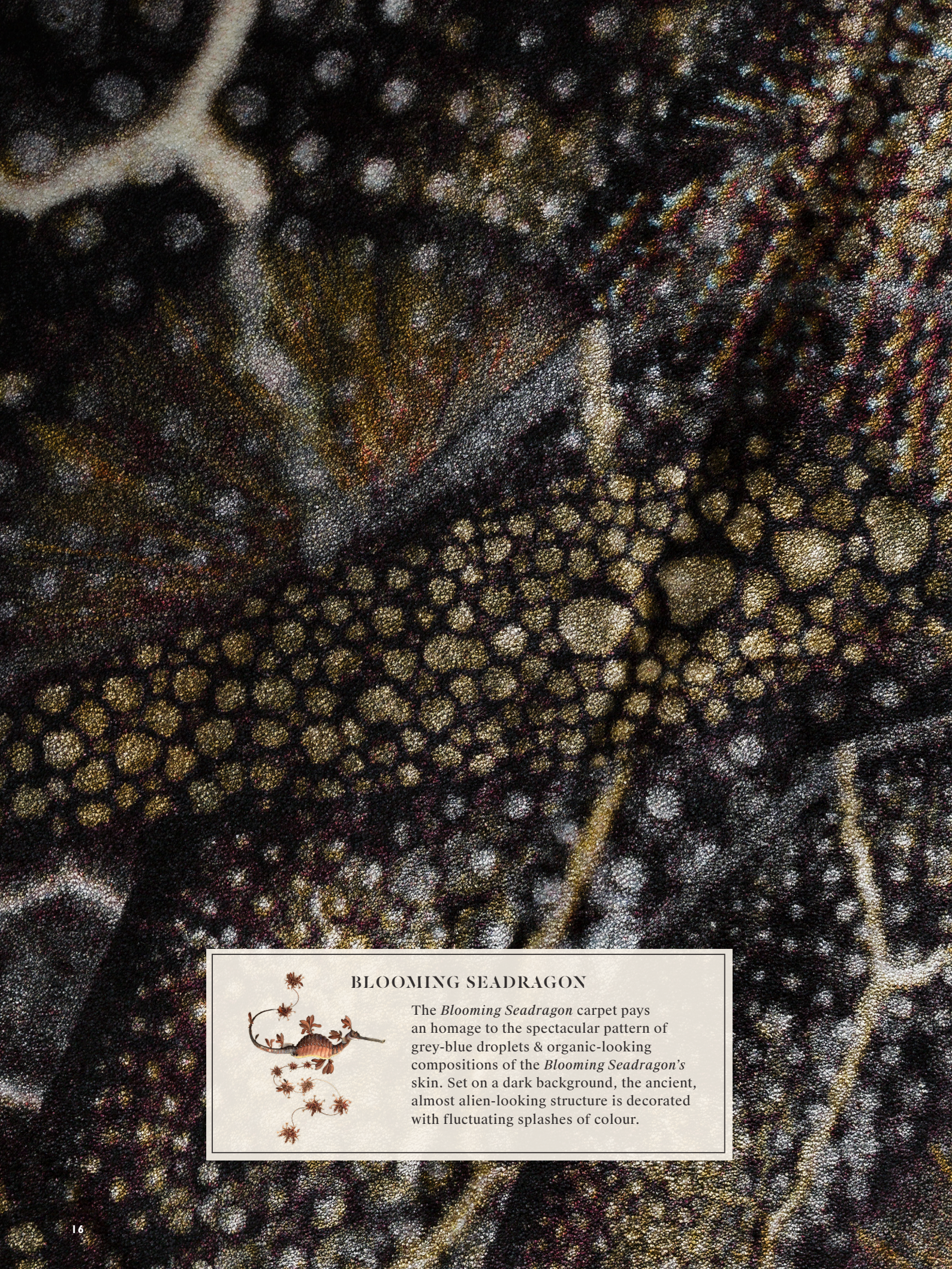


### BEARDED LEOPARD RUG



The cryptic and mysterious nature of the *Bearded Leopard* is incorporated within this pattern. The warm colouring at the heart of the carpet is overtaken by splashes of colour as black as the darkest night. The rug's form, bursting with energy, is a reminder of the feline beauty of this godly creature.





### BLOOMING SEADRAGON

The *Blooming Seadragon* carpet pays an homage to the spectacular pattern of grey-blue droplets & organic-looking compositions of the *Blooming Seadragon's* skin. Set on a dark background, the ancient, almost alien-looking structure is decorated with fluctuating splashes of colour.





Blooming Seadragon Rug

BY MOOOI





Blushing Sloth Rug

BY MOOOI





### BLUSHING SLOTH RUG



A pale green glow, resembling the algae on the *Blushing Sloth's* fur, stands out among shrubs of white fur, rough dark valleys and mysterious shadows. Earthy and multi-textured, this carpet is a rectangular example of a world within a world.



### CALLIGRAPHY BIRD RUG



*Calligraphy Birds* were often seen posing and dancing to attract a partner. The male would move in a rhythmic dance, the blue hues of his ornate collar feathers shining in the sun. The female would fan her white tail feathers that ended in what resembled graceful calligraphy swirls.





Calligraphy Bird Rug

BY MOOOI





Dodo Pavone Rug

BY MOOOI





### DODO PAVONE RUG



The *Dodo Pavone* rug's pattern is a harmonious blend of silvery, beige, pink & white plumes and feathers with different textures. This soft nest of silky feathers, so like the animals' amiable and gentle nature, invites you to dive into this carpet.



### DWARF RHINO RUG



The *Dwarf Rhino* carpet brings a touch of mighty elegance to any space, with its martial-looking pattern of blue-grey scales, resembling a suit of armor. The animal's skin served as the perfect muse for this square rug, resembling a mighty warrior.





Dwarf Rhino Rug

BY MOOOI





Flying Coral Fish Rug

BY MOOOI



### FLYING CORAL FISH RUG



The graceful airy glide of the ethereal *Flying Coral Fish* is, alongside the beauty of the dense underwater world, captured in a harmonious square rug. The blue-grey, black speckles and coloured circles create a magical world with a contrasting nature: liquid and airy, rounded and sharp.





### UMBRELLA SQUID RUG

The bioluminescent jewel pattern of deep blues and velvety, ruby red sparkles in the *Umbrella Squid* carpet, pays the perfect tribute to this ancient creature. In a perfectly round shape, resembling an open umbrella, light and shadows gracefully fluctuate in a magical underwater world.





Umbrella Squid Rug

BY MOOOI

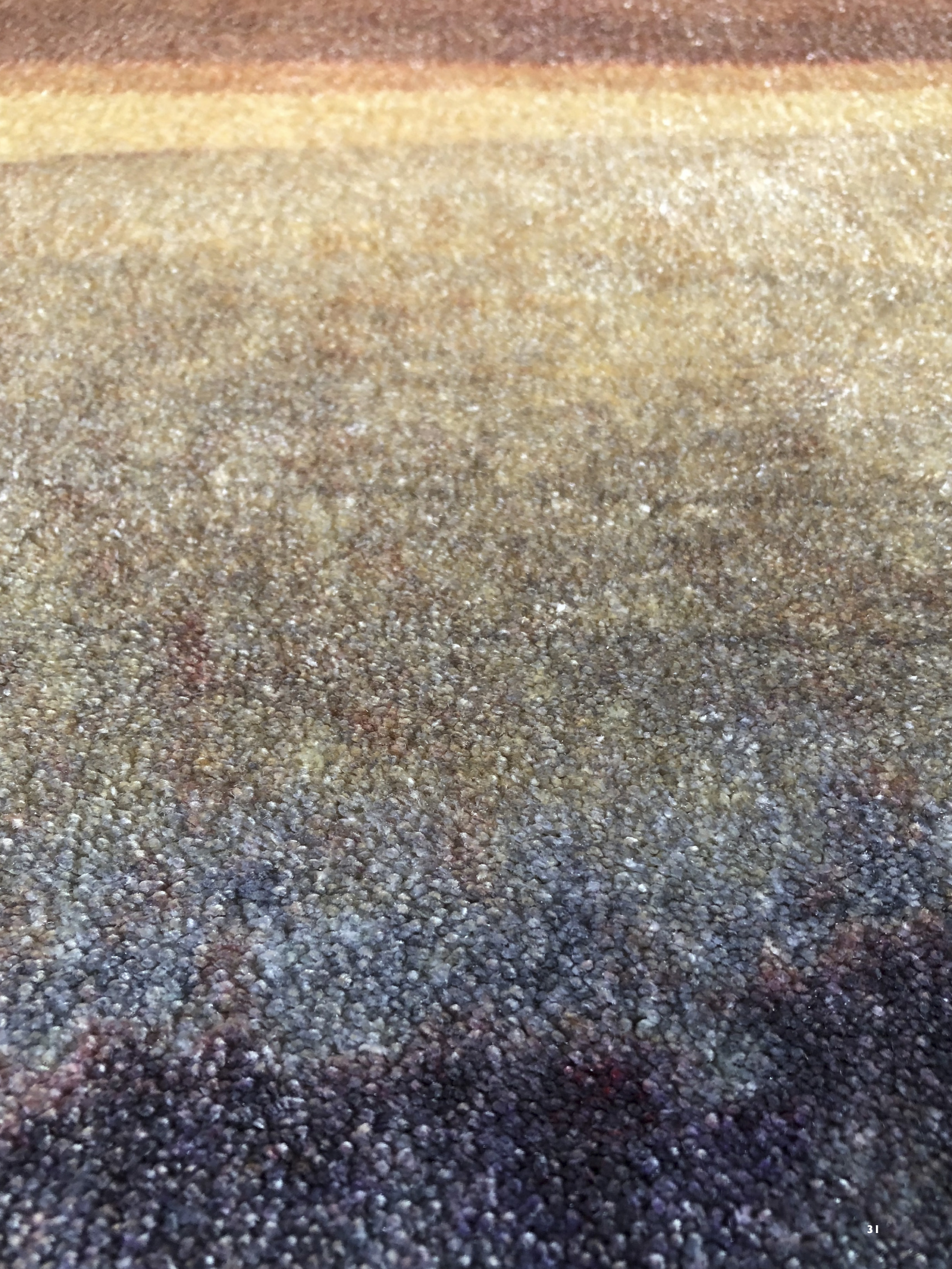


## Quiet Collection

The Quiet collection, with its understated luxury, gives way for extraordinary Moooi designs to shine even brighter. The collection's design brings a subdued elegance as the base for any space and provides a centre space for extraordinary design.

The Quiet carpets is a collection of four designs in different colourways, inspired by the beauty and transiency of nature; Horizon, Morning, Erosion and Patina







# Patina

BY MOOOI



*Patina Fog*



*Patina Moss*



*Patina Brick*



*Patina Cinnamon*

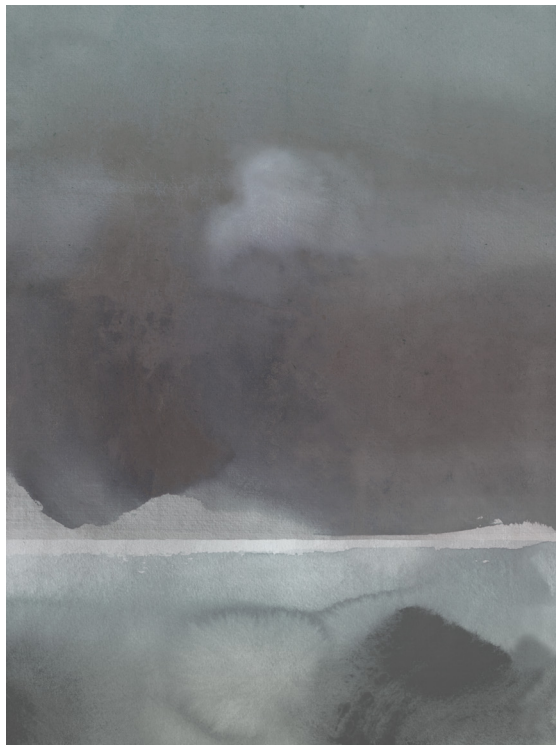
The subtle colours of Patina appear to be ethereal and fleeting like a fine haze captured by light. Patina catches this momentary perception in four simultaneously outspoken and subdued colourways.



QUIET COLLECTION

# Horizon

BY MOOOI



*Horizon Fog*



*Horizon Sunrise*



*Horizon Lake*



*Horizon Bay*

The softness of Horizon is due to the water-colour inspired textures and shapes of the collection. Its colours a gentle reminder of how our perception of a horizon is subject to change depending of time and place.



QUIET COLLECTION

# Morning

BY MOOOI



*Morning Asphalt*



*Morning Clay*



*Morning Nude*



*Morning Shimmer*

The softness of Horizon is due to the watercolour inspired textures and shapes of the collection. Its colours a gentle reminder of how our perception of a horizon is subject to change depending of time and place



QUIET COLLECTION

# Erosion

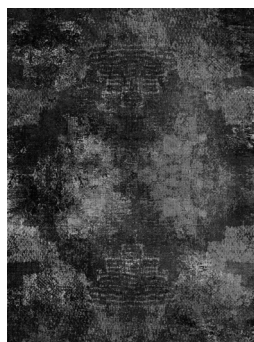
BY MOOOI



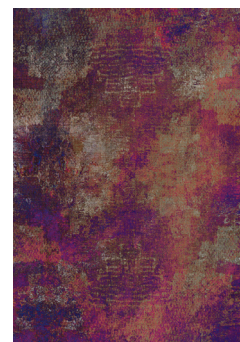
*Erosion Rust*



*Erosion Rosegold*



*Erosion Moon*



*Erosion Rhodonite*

Equivalent to beginnings, endings hold a type of beauty only nature can provide. The transiency of material can be a glorious thing to behold. The different colourful stages of natural Erosion captured in a carpet collection to be admired forever.



## Nordic Collection

MOOOI CARPETS selected four recognized designers from the Nordics to create a compelling *Signature Collection* with a typical Nordic aesthetic. The four separate concepts are each inspired by elusive elements like faceted crystals, colourful clouds, stained glass and abstract labyrinths.

The results are sparkling designs which show us the beauty within these precious things of life. The *Nordic Collection* consists of four carpet designs available in all standard rug sizes as well as broadloom patterns. The surprising and completely different designs gently blend into any kind of space, adding a touch of Nordic aesthetic, abstract or organic magic and especially joy to your own interior landscape.



# FRONT

Sofia Lagerkvist and Anna Lindgren are the members of the Swedish design group Front. Their versatile works are based on discussions, explorations and experiments. They create constantly changing interiors, objects with explosions, robotic furniture and furniture inspired by their fascination with magic.



# LUCA NICHETTO

In 2006 Luca Nichetto founded his multidisciplinary design studio in Venice, specialized in industrial design, product design and design consultancy. In 2011 Nichetto opened a second studio in Stockholm, in response to an ever growing number of requests for collaboration from international companies.

# INGIMAR EINARSSON

Ingimar Einarsson is a designer from Iceland with a studio in London. His work has a focus on multimedia and photography and includes *The Capital Series 2011-2016*; a photography collage series made from architecture from 52 capitals in Europe. His works are held in collections including London, Helsinki and New York.



# NOTE

Note is a Stockholm based multidisciplinary design studio, founded in 2008. They collaborate intensely with passion, to share their insights with the world. Creativity is about searching for what is missing, to constantly realign thoughts and expressions, to find that moment of insight when everything clicks.

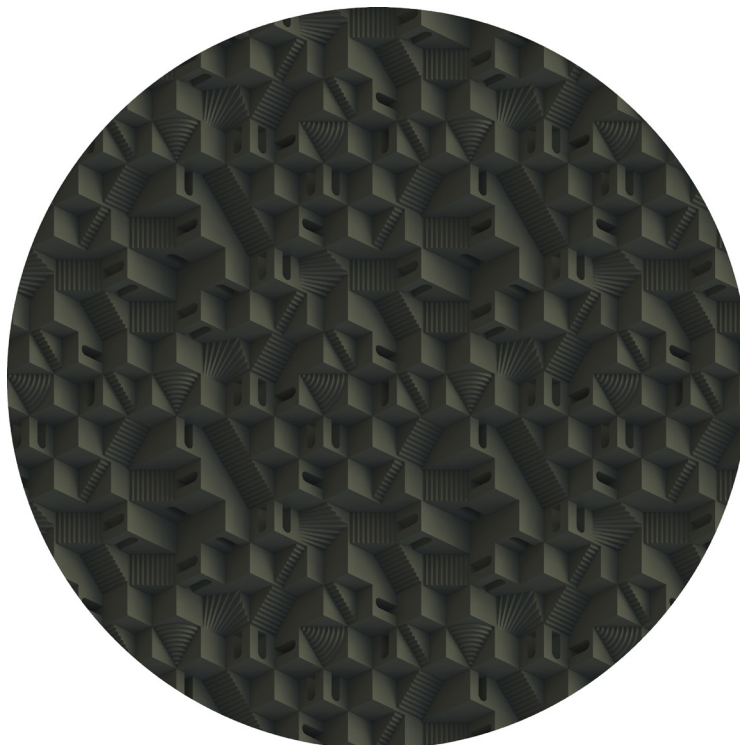




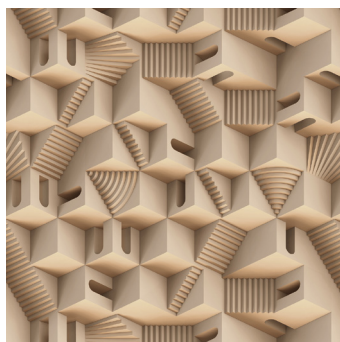


# Maze

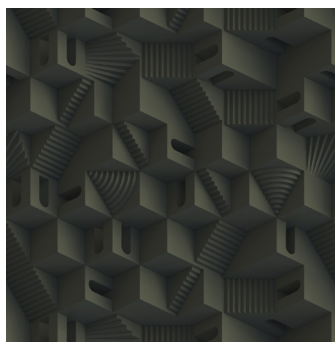
BY NOTE



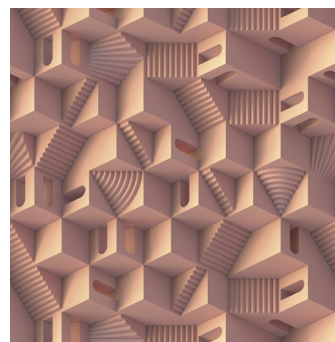
*Rugs & Broadloom available in three colourways and in different shapes and sizes.*



*Maze Puglia*



*Maze Tical*



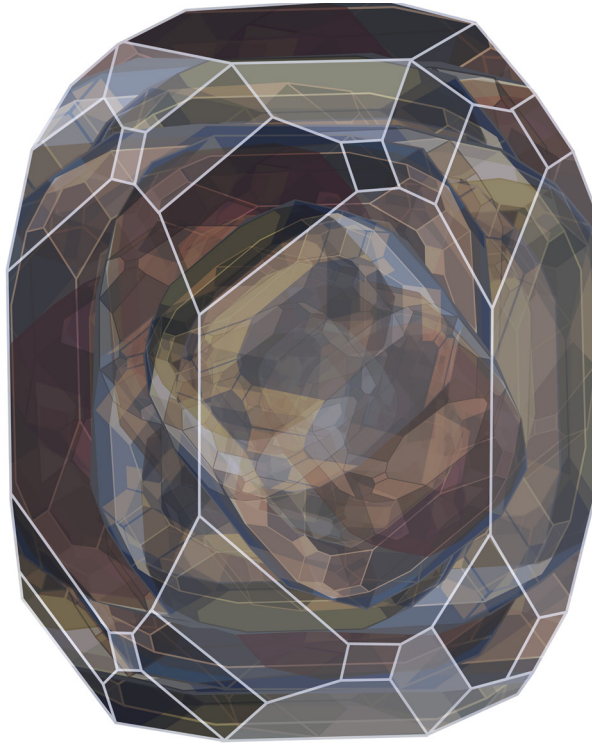
*Maze Miami*

NOTE was inspired by a 3D puzzle game, where one can build sculptures in non-directional ways. The carpet designs have no up or down, no left or right, nor any sense of direction. Just an intriguing labyrinth of opportunities. Their names are depicted from geographical places with a strong connection to this certain type of architecture.

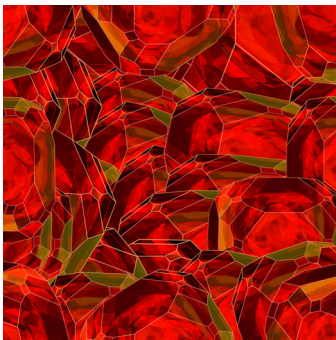


# Crystal

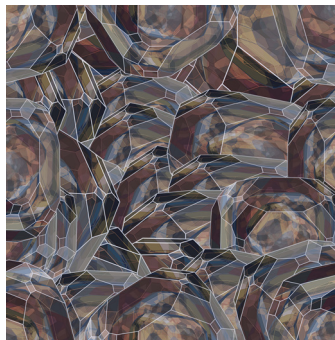
BY INGIMAR EINARSSON



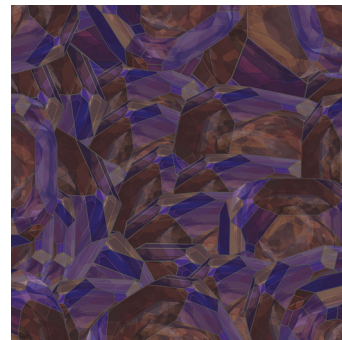
*Rugs and broadloom available in three colourways*



*Crystal Red*



*Crystal Brown*



*Crystal Purple*

INGIMAR was inspired by the geometric forms of the Hydroxyapatite crystal. Within the designs of the Crystal carpets, the various translucent layers create an on-going depth, as if the crystals are reflected by thousands of mirrors. The bright colours in combination with the darker colour families amplify this effect of reflection and light play.





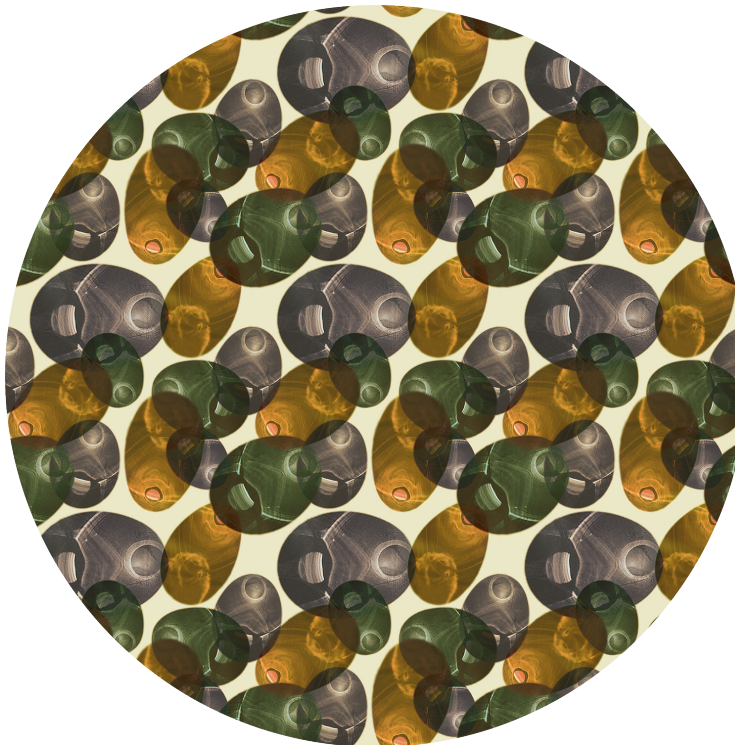




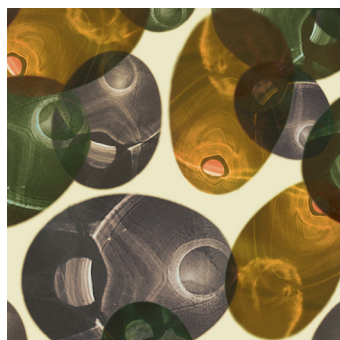


# Reflections

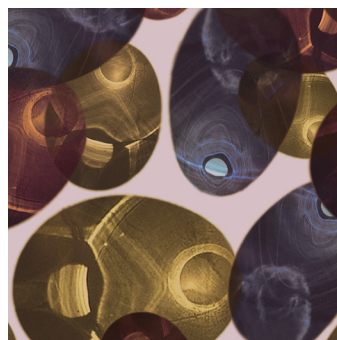
BY LUCA NICHETTO



*Rugs and broadloom available in two colourways and in different shapes and sizes.*



*Reflection Spring*



*Reflection Autumn*

When the sun is reflecting stained glass it creates magic of abstractions over the canals in Venice. The Reflections rugs reproduces these playful structures of light. The different scales, colours, textures and refractions inside the objects create elusive and ever changing figures, one that imagination and perception can interpret openly.

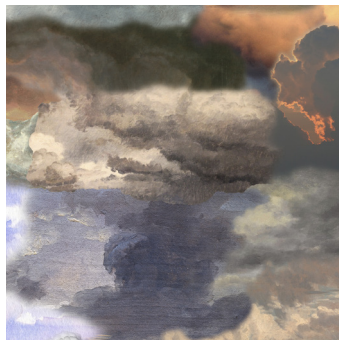


# Walking On Clouds

BY FRONT



*Rugs available in two designs, in different shapes and sizes. Broadloom available in one pattern.*



*Walking on Clouds Dawn*



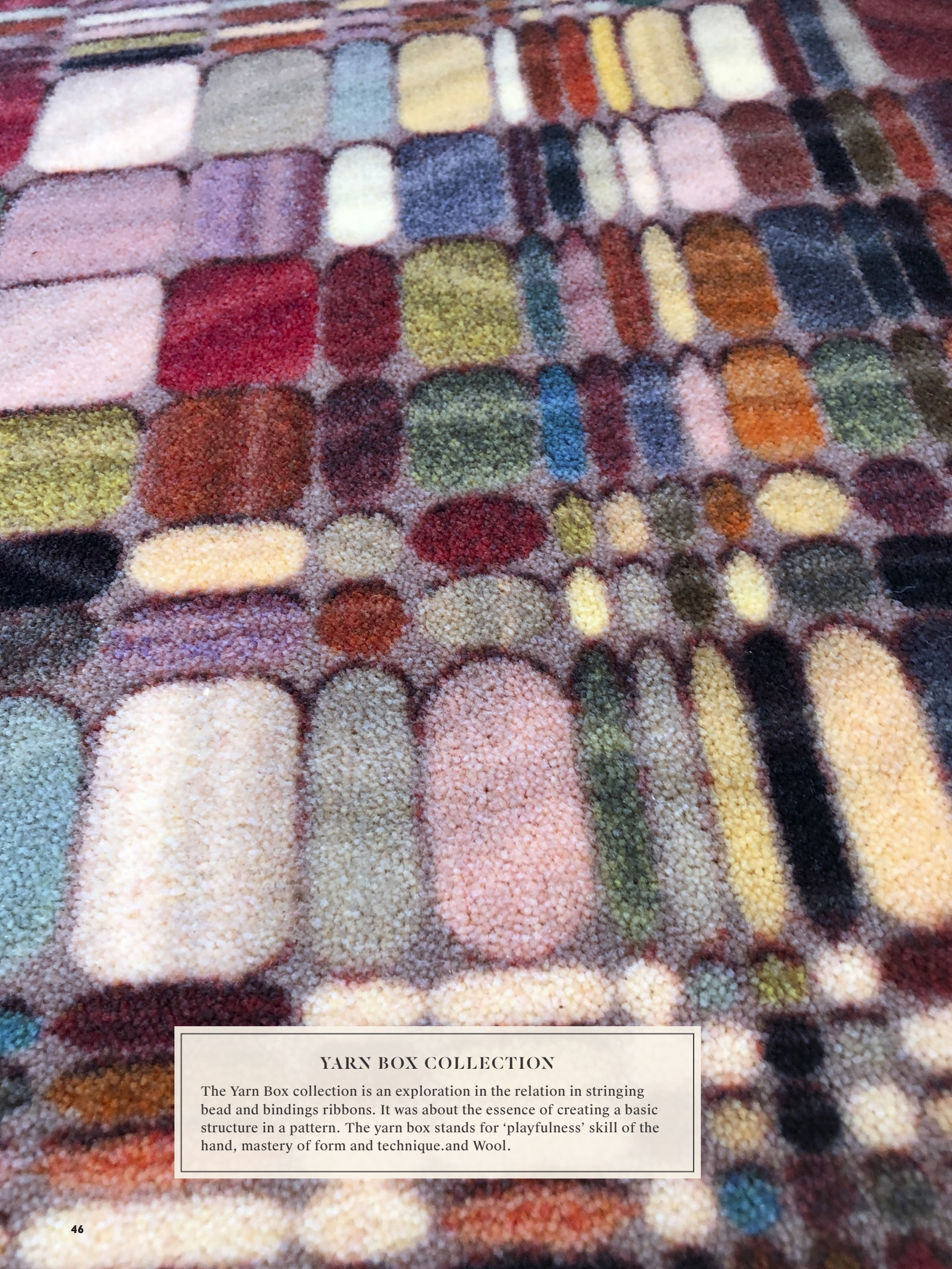
*Walking on Clouds Dusk*

FRONT studied representations of clouds in paintings and found hundred tones and shades. Their carpets are a collage of clouds depicted from a variety of media from different eras. Clouds have inspired artists, scientists and writers for centuries, and their attempts to capture these ephemeral sculptures are reflected by brushstrokes and marks.









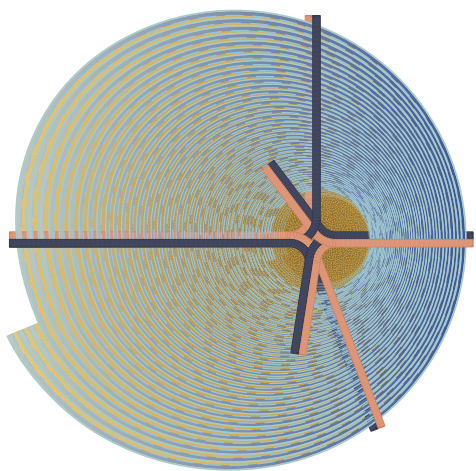
### YARN BOX COLLECTION

The Yarn Box collection is an exploration in the relation in stringing bead and bindings ribbons. It was about the essence of creating a basic structure in a pattern. The yarn box stands for 'playfulness' skill of the hand, mastery of form and technique. and Wool.

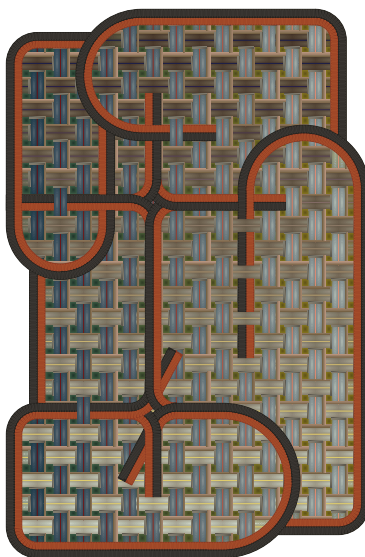


# Bows, Tangles & Beads

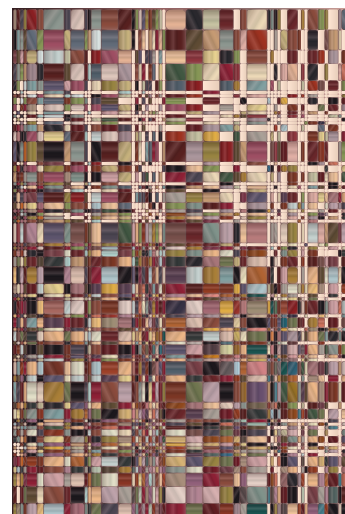
BY CLAIRE VOS



*Bow Shanghai*



*Tangle Menjangan*



*Bead (Rugs & broadloom)*

*Bow & Tangle available as rug in two colorways and in two sizes.  
Bead available in two scales, different shapes and size rugs and as broadloom pattern.*

## CLAIRE VOS

Claire Vos started her studies in Industrial Design at Eindhoven's "Design Academy" in 1984. She worked as a trainee at Studio Benno Premela in Amsterdam and Creation Baumann in Switzerland and studied her craft in Italy and Indonesia before graduating in 1990 together with her partner, furniture designer Roderick Vos. During that year she and Roderick moved to Indonesia, Surabaya, Java to develop their knowledge of rattan furniture and textile production. This particular period evidently had a large impact on her personal interest in Asian Culture and its works. In 1999 Claire & Roderick Vos officially started their design office 'Studio Roderick Vos', based in Heusden Vesting, the Netherlands. They design: lighting, textile, accessories and furniture for international design brands.

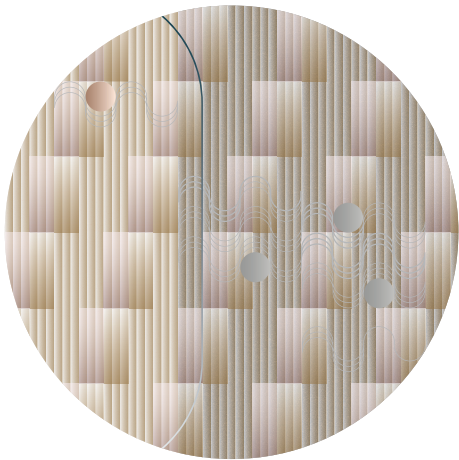




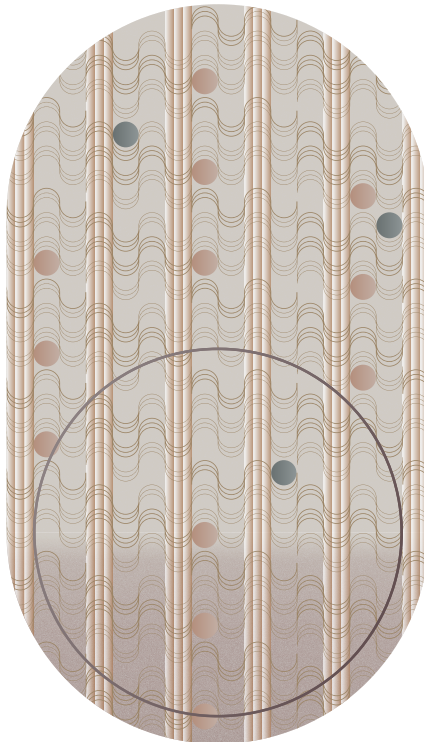
SWELL COLLECTION

# Swell

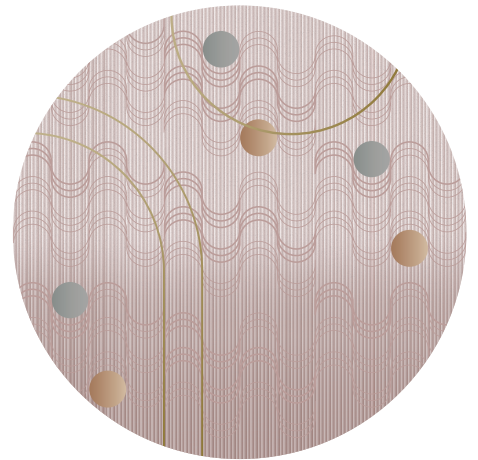
BY MAE ENGELGEER



*SWELL Citrine*



*SWELL Sunstone*



*SWELL Rose Quartz*

*Rugs available in two sizes.*



## MAE ENGELGEER

Mae Engelgeer's work embraces subtle colour palettes, patterns and linear elements. Complex compositions merge with perfection to establish harmony. Creative explorations into the contrasting of materials and textures result in works that are luxurious in their tactility and dimensionality.





### SWELL COLLECTION

For this collection Mae Engelgeer translated graphics that refer to 70ties patterns, into an elegant play of rounded shapes. Lines that give a subtle rib effect and carefully positioned colorful circles brighten up the subdued color palette. Her soft elegant approach to textiles gives SWELL a groovy yet contemporary atmosphere.



MEGAN GREHL COLLECTION

# Aires & Axel

BY MEGAN GREHL



*Aires*



*Axel*

*Rugs available in two sizes.*



## MEGAN GREHL

Founded in 2014 in Brooklyn, Megan Grehl is known for sculptural gestures, simple silhouettes and layered textures that instil a sense of harmony. The interior design and architecture team work internationally on high-end residential and commercial projects.





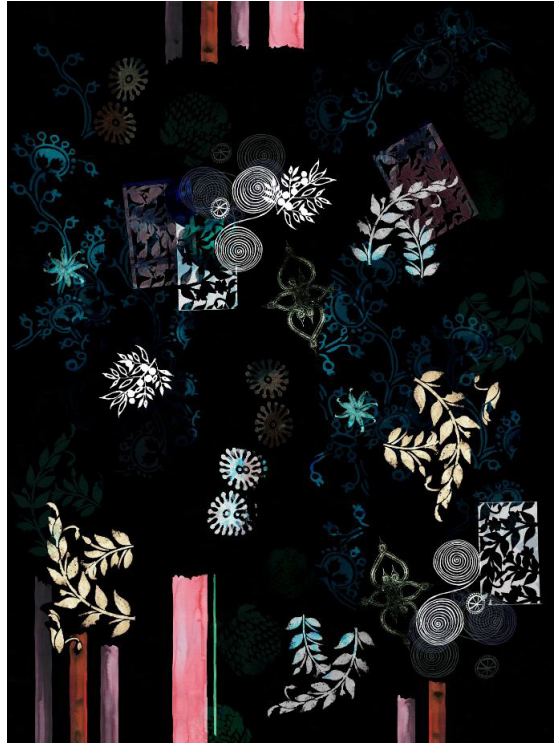
## AIRES & AXEL

Megan Grehl's Design team designed two rugs as an ode to the intricate and ornate Moooi Carpets collection. The graphic motif for each design was inspired by Brutalist abstract forms, including those of Basque sculptor Eduardo Chillida. Each rendition is composed of multiple graphic layers that create the illusion of depth and dimension, transforming the rug into a three-dimensional accessory.

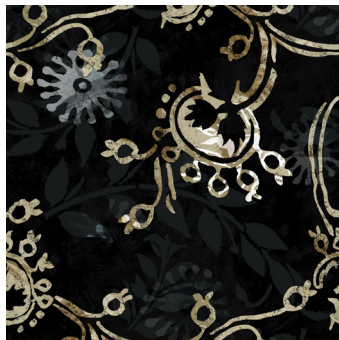


# Le Temple

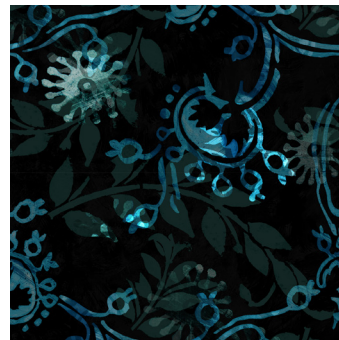
BY MAISON CHRISTIAN LACROIX



*Le Temple Jais Rug*



*Le Temple Bronze*



*Le Temple Blue Nigelle*

Since the launch of the Couture House in 1987, the Christian Lacroix style has been unique, exuberant, colorful and baroque. Today, Maison Christian Lacroix expresses its dynamism and love for color via its lifestyle, fashion accessory and menswear collections designed by the brand's Creative Director, Sacha Walckhoff and made in collaboration with several prestigious labels. Combining the excellence of Christian Lacroix with exceptional savoir-faire, the Studio's talent is conveyed through the realization of these varied and unique lifestyle collections.





### LE TEMPLE

The traveller has drifted from port to port, journeying from Heraklion to the slopes of Vesuvius, driven by a thirst for a long-forgotten mystery. Enthralled by universal beauty, he has sought its secret from Ancient Crete to Pompeii, the everlasting city. Inspired by his quest for knowledge and meaning, he remembers a fragment of fresco, an unfinished mosaic, the sculpted Acanthus leaves and garlands of flowers that once clothed these sacred walls. Shapes and patterns intermingle. The marks of the past melt into the designs of the present. On the floor, the artist gives shape to his memories, creating “Le Temple”, a carpet that is an ode to all aesthetes, present and past.





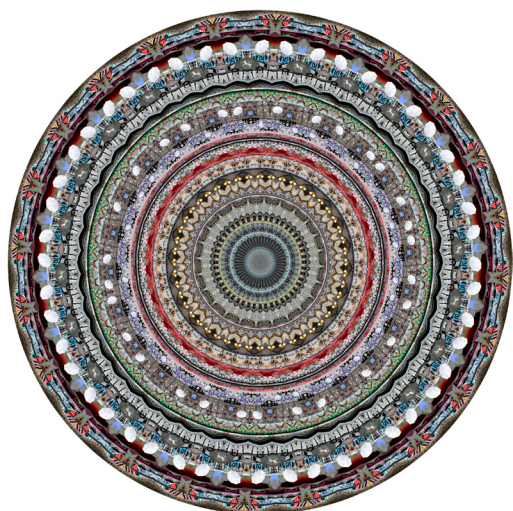
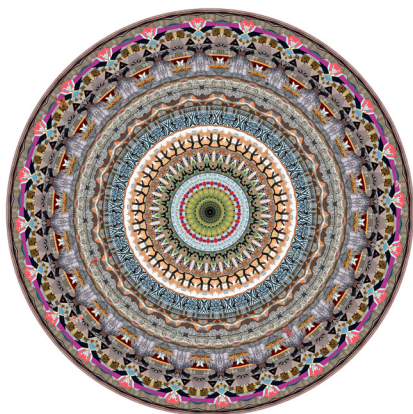
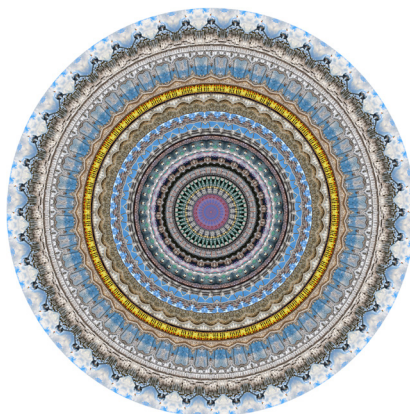
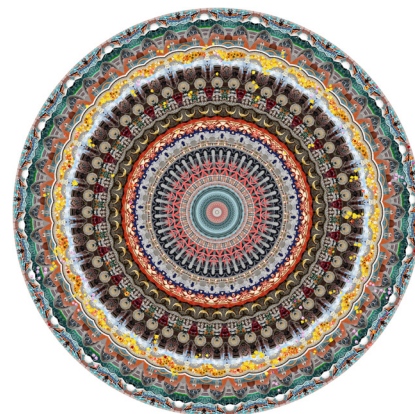
### URBAN MANDALAS

In Hindu and Buddhist a mandala is a figure representing the universe, communicating unity and harmony. Peterson creates his own mandalas based on the look and feel of cities that hold a special place in his heart. Each design englobes its own elaborate pattern and set of colours, yet they all connect and blend into each other at a higher level.



# New Urban Mandalas

BY NEAL PETERSON

*Paris Montmartre**Las Vegas**Rotterdam**Brussels**Amsterdam*

## NEAL PETERSON

Neal Peterson is an American artist based in Minneapolis whose work is influenced by his travels around the globe. In 2016, Peterson began creating large-scale collages of cities composed of original street photography. Combining iconic architecture, natural elements, graffiti and more, his Urban Mandalas capture the blossoming, fractal nature of cities. With Buddhist art as inspiration, these kaleidoscopic microcosms represent the oneness and connectivity of a city and its people. Each design is unique in its details, but the form remains the same throughout the series, illustrating our commonalities and collective humanity.





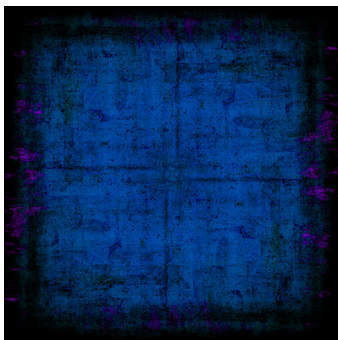


# Customize your own carpet

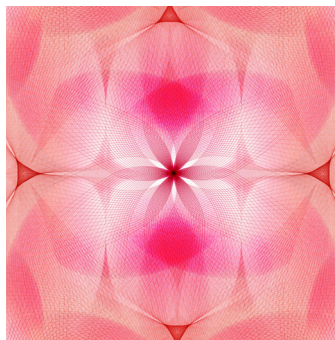
THE CONFIGURATOR



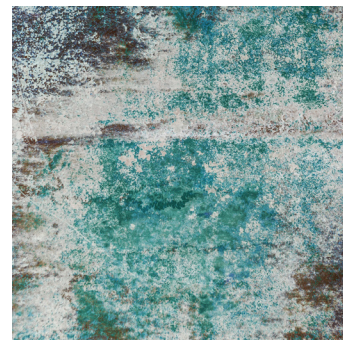
*Paperstack custom carpet*



*Painted Composition*



*Spiroflower*



*Decay*

Customize your own carpet with our online Carpet Configurator. Click by click you can adjust the colour, shape and dimension of the pattern of your choice into your own unique carpet. Visit our website and try it yourself!

[moooicarpets.com/configurator](http://moooicarpets.com/configurator)







# How we work & what we need

## CREATE YOUR CARPET STEP BY STEP

*Every flooring project runs through our 12 step procedure, which we carefully follow in close collaboration with you.*

### 1. Contact us with your design

We will be at your side from start to finish, even in unusual and complex projects. Our carpet experts with years of experience are here to help you in any stage of the procedure.

### 2. Create Your Own Design

If you are creating a YOD carpet we will guide you with our "How we work and What we need" document, in order to deliver a printable file within the given time line. For vector based designs you can use the colors of our colorbox or determine specific colors in RAL/Pantone. For photorealistic designs the colors are based on a RGB color profile.

A printable design file has to be:

- 30PX per Centimeter = 76,2 DPI
- Color profile RGB Adobe 1998
- Correct size: rugs maximum 400cm width /broadloom repeats fitting in 394cm width
- TIF file format reduced to one layer

### 3. Decision

Choose the right material, backing and finish for your flooring project. Our Sample Kit can help to make the perfect choice. For more information about colors, materials and finishes visit our website.

### 4. Contract form & budgetting

To kick-start your project we need our completed contract form. This form informs us about specific data including:

- Name of designer
- Name of client
- Name of Carpet design(s)
- Quantity: Amount of m<sup>2</sup> (number of rugs and /or m<sup>2</sup> broadloom)
- Quality, backing and finish of the carpets
- DWG file (floorplan with all measurements)
- Lead time (when do we have to deliver)
- Address etc.

We can offer m<sup>2</sup> prices of different materials so you can make the best choice within your budget. Total amount of meters can differ from the total surface of your project because of instalment waste. We have to define your design (after sampling) within your DWG floorplan to be able to calculate complete carpet volume.

### 5. CAD file & sampling

Creative color and graphic implementation of your design will be done by our experienced carpet designers. CAD printouts will be dispatched by e-mail for your approval. We will start printing your sample within 10 working days after approval. Our team of specialised textile professionals will print a sample of the approved CAD designs on the chosen carpet quality.

### 6. Sample approval

Our standard size of sampling is 49 x 49 cm. We will advise you when a bigger sample is needed for approval, depending on size of your complete design. After approval of the sample we can start working on the floorplan and quotations.

### 7. Calculation & final quotation

We will create a final quotation based on given information related to the on-site measurements. We can support you in creating a floorplan and calculation for your bigger volume project. After delivering us your DWG file with the specified carpets areas, we will provide you with an offer for creating a floorplan and calculation based on the volume and complexity of the project. The floorplan is a "made to measure floorplan". This made to measure floorplan will be created and produced in the most economical way in order to avoid too much waste.

After approval of our production plan quotation we will provide you with final floorplan and calculations.

Based on the final floorplan we create the final quotation. Additionally, we can offer a visual presentation of the required flooring layout within your project.

### 8. Approval

Your final approval of our production plan and quotations.

### 9. Production

Your carpet will be produced on our state of the art chromojet 800 production machine with incredible accuracy. After printing we will provide the chosen backing and finish your carpet within given timeline.

### 10. Delivery

Wall-to-wall carpets with Action backing can be delivered after 3 weeks of your final approval. Rugs will take 6 to 8 weeks because of more complex backing and finishing.

### 11. Installation

For the best installation of your custom-made carpet we can offer you a installation plan including the number of rolls per design, measurements of each roll and the instalment of each roll within your project. We are very happy to inform you about experienced people within our network if supervision is wanted.

### 12. Result

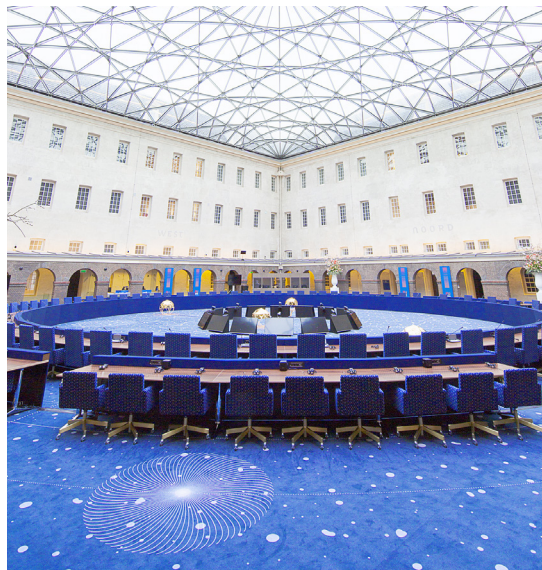
The final result of your carpet perfectly fitted for your project. See next pages for examples of completed Your Own Design projects.







YOUR OWN DESIGN CARPETS APPLIED





# Why Moooi Carpets?

INFINITE CARPET FLOORING SOLUTIONS

Moool Carpets is more than just a carpet. We provide custom services from start (idea) to finish (result). Our worldwide retail showroom network includes experienced interior designers, advisors, highly skilled carpet- and fabric printing professionals with years of experience in carpet project installation.

## Advantages and unlimited choice

### **High resolution digital printing without color limitations**

The highest resolution technique available in industrial carpet printing, using virtually any color.

### **Print on pre-backed material**

Accurate and easier installation for seamless repeatable patterns without stretching.

### **Environmental Friendly**

Less dye waste, fewer cleaning cycles and less energy consumption.-

### **Small minimum volume**

Accessible and flexible, due to our on-demand model for carpet imaging

### **Always a perfect match**

We offer 3 different product groups in order to find a perfect carpet match for your specific project:

#### **1. Signature collection**

Broad collection of Signature rugs and wall-to-wall patterns made by well-known international designers.

#### **2. Moool Custom collection**

Wide range of adjustable designs in our configurator. Choose your own color, shape and size.

#### **3. Your Own Design**

Your own design, especially made for your unique project or environment.





FRANCESCO  
S. G. 2010  
MOOOI  
COPRATI



# Colors and materials

## INFINITE CARPET FLOORING SOLUTIONS

Having the ability to work with the finest technology is one thing, but offering customers complete flexibility and high quality products is just as important. To ensure assured performance and adaptability, we offer different materials with several backing and finishing options.

### **Saxony (Low Pile 100% PA)**

Our Essentials in premium heatset-polyamide-6 cut-pile constructions are available in three different pile weights: 900, 1100 and 1300 g/m<sup>2</sup>. Our PA features a textile backing and is recommended for heavy contract use.

### **High Pile Soft Yarn (100% PA)**

Our new tufted raw product with a pile weight of 1750 g/m<sup>2</sup>. This durable material combines all benefits of a floor covering for individual interior design. If desired, we also deliver this new feel-good quality for accurate to size prints for bordered carpets: in line with the corporate design of your partners or as an eye-catcher for hotel lobby, luxurious studio or stylish suite.

### **Wool**

Our wool is a hard-wearing fabric with 80% high-quality New Zealand wool from European production with a pile weight of 1400 g/m<sup>2</sup>. Wool is warm, breathes, regulates the room temperature, absorbs moisture and is easy to clean.

It includes all the benefits of natural material while meets the growing desire for sustainability.

*\*Please consult our data sheets on page 26 tm 28 for complete specifications and additional information on certifications and seals for all our material options.*

## **BACKING OPTIONS**

### **Action backing**

For heavy use in commercial properties

### **Felt backing**

Great comfort and sound absorption

## **FINISH OPTIONS**

All runners or non wall-to-wall carpets must be finished to prevent fraying or unraveling. We offer two finish options.

### **Overlock**

An overlock creates a yarn stitched finish. Overlock finish resembles a hand - sewn

look, although it is done by machine.

Overlock uses a thick fiber that is wrapped around the edge of the carpet continuously.

### **Blind hem**

With blind hem a textile strap is sown to the edge of the carpet and folded back around the edge, then pasted on the backside of the carpet. You won't see the stitching.

Our technical specifications are based on EU policies. For specifications in other countries please contact us.

## **MATERIAL TOOLS**

### **Moooli Carpets sample kit**

Our Sample Kit contains information about all materials, finishes and backing options.

### **Moooli Carpets colorbox**

Our Colorbox contains the real printed colors on our PA (Low Pile) material, matched with our online color tool (only for vector based designs).









*bertjan  
pot*



*edward van vliet*



**Christian Lacroix**  
Paris

*maison christian lacroix*



*marian bantjes*



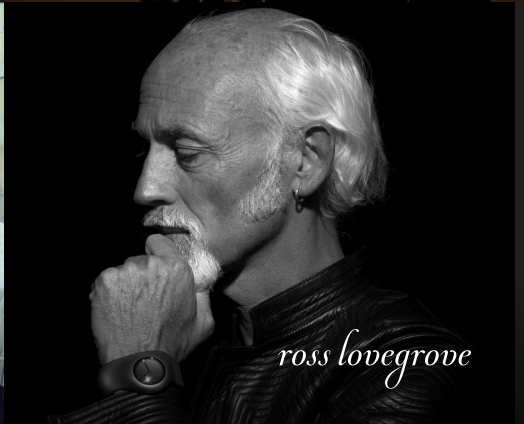
*claire  
vos*



*tricia guild*



*valerio  
sommella*



*ross lovegrove*



*neal  
peterson*



*klaus  
haapaniemi*



**moooi**



*noortje van eekelen*



*barbara  
broekman*



*sonya pletes*



*marcel  
wanders*



*kustaa  
saksi*



*mae engelgeer*



*broersen & lukacs*



*neri & hu*



*megan  
grehl*



*note*



WE LISTEN TO WHAT DESIGNERS WANT TO MAKE.  
WE TRY TO REALISE THEIR DREAMS!

*kit miles*



*david/nicolas*



*studio job*



*luca  
nichetto*



*ingimar einarsson*





## SIGNATURE RUGS BY MARCEL WANDERS



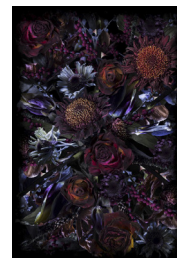
EDEN QUEEN



EDEN QUEEN



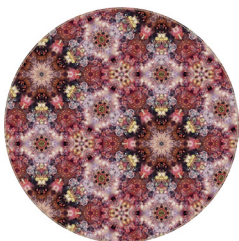
FOOL'S PARADISE



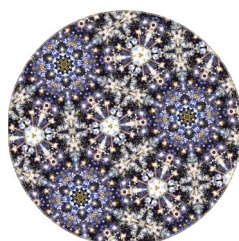
FOOL'S PARADISE



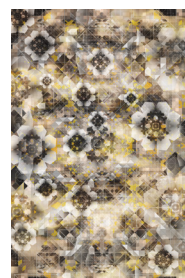
DELFT BLUE PLATE



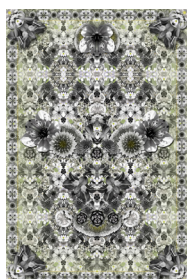
FESTIVAL INFERNO



FESTIVAL MIDNIGHT



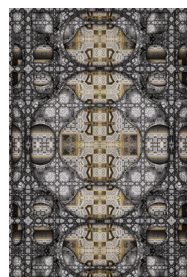
DIGIT GLOW



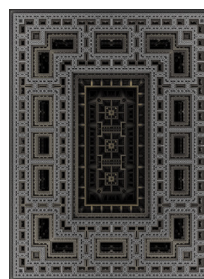
EDEN KING



S.F.M. #075



S.F.M. #076

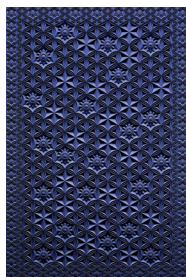


S.F.M. #077

## JACQUARD WOVEN RUGS



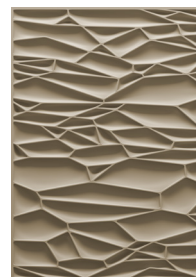
BLUEBERRY FIELDS



CRYSTAL ROSE



HEAVEN'S GATE



DRY

All our signature rugs are available in Low Pile Polyamide and Soft Yarn Polyamide and Wool. Some are available in different colors and sizes  
Please visit [www.moobicarpets.com](http://www.moobicarpets.com) to see the full collection and technical information in detail.











# SIGNATURE RUGS BY MOOOI

## EXTINCT ANIMALS COLLECTION



ARISTO QUAGGA



ARMOURED BOAR



BEARDED LEOPARD



BLOOMING SEADragon



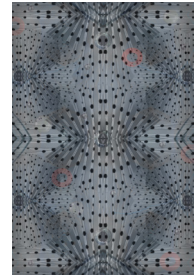
BLUSHING SLOTH



DODO PAVONE



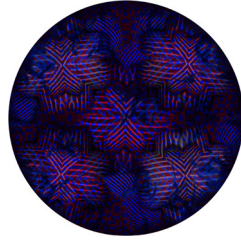
DWARF RHINO



FLYING CORAL FISH



CALLIGRAPHY BIRD



UMBRELLA SQUID

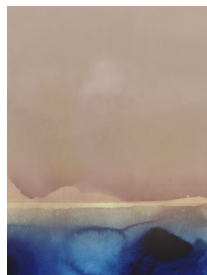


MENAGERIE OF  
EXTINCT ANIMALS\*

## QUIET COLLECTION



PATINA FOG



HORIZON SUNRISE



MORNING ASPHALT

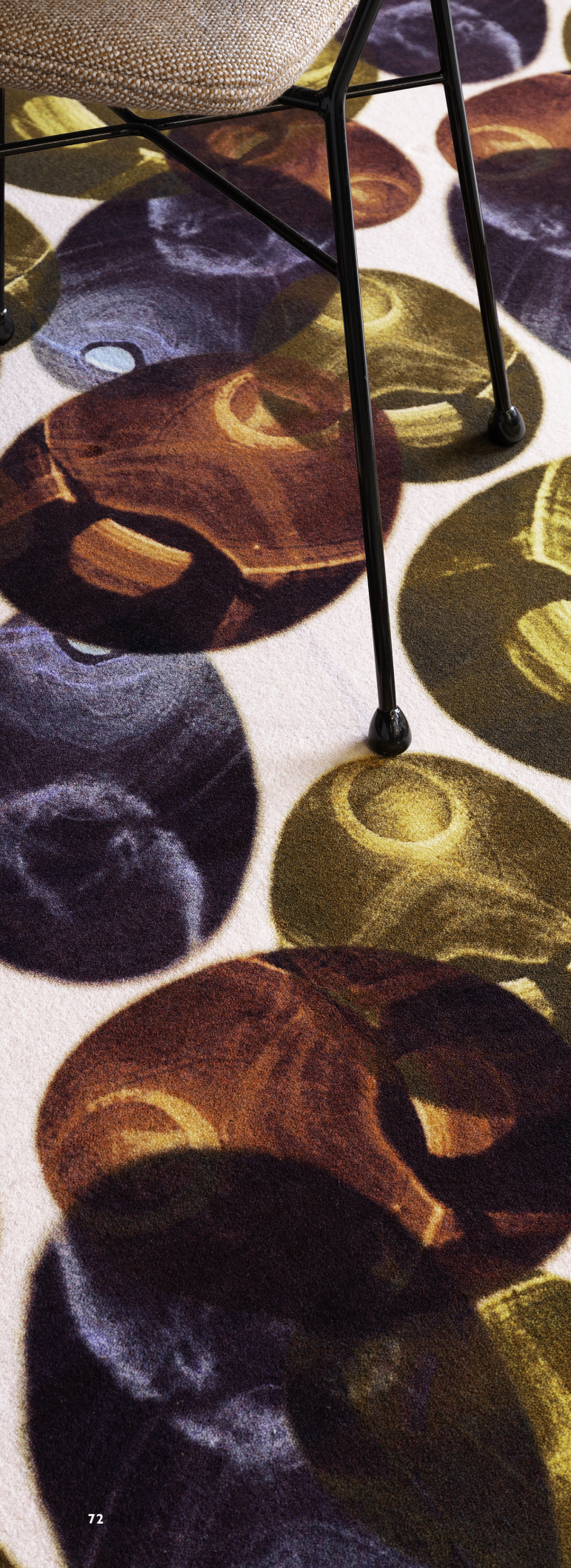


EROSION RUST

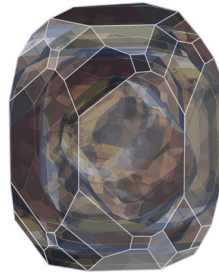
\* Scale might differ

All our signature rugs are available in Low Pile Polyamide, Soft Yarn Polyamide and Wool. Some rugs are available in different colorways and sizes. Please visit [www.mooodcarpets.com](http://www.mooodcarpets.com) to see the full collection and technical information in detail.

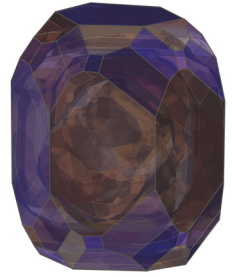




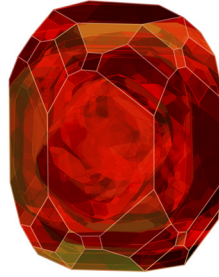
## NORDIC SIGNATURES



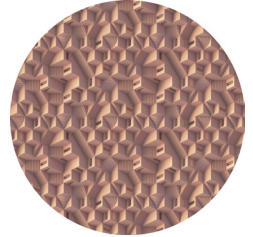
CRYSTAL BROWN  
*by Ingimar Einarsson*



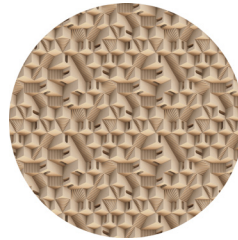
CRYSTAL PURPLE  
*by Ingimar Einarsson*



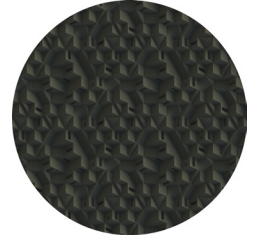
CRYSTAL RED  
*by Ingimar Einarsson*



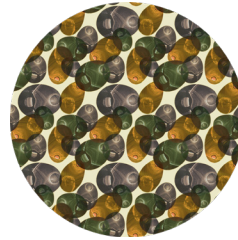
MAZE MIAMI  
*by Note*



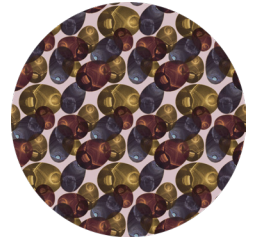
MAZE PUGLIA  
*by Note*



MAZE TICAL  
*by Note*



REFLECTIONS SPRING  
*by Luca Nichetto*



REFLECTIONS AUTUMN  
*by Luca Nichetto*



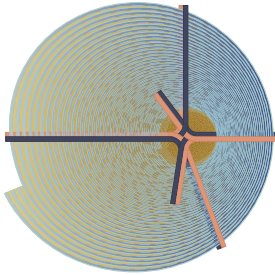
WALKING ON CLOUDS DAWN  
*by front*



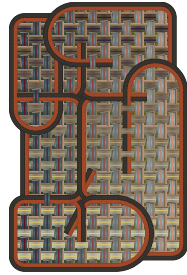
WALKING ON CLOUDS DUSK  
*by front*



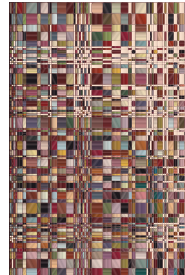
## SIGNATURE RUGS



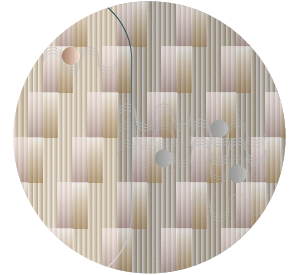
**BOW SHANGHAI**  
by Claire Vos



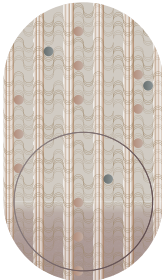
**TANGLE MENJANGANG**  
by Claire Vos



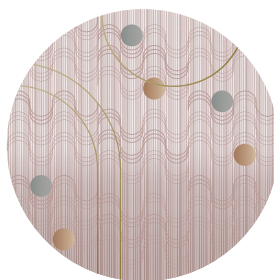
**BEAD**  
by Claire Vos



**SWELL CITRINE**  
by Mae Engelgeer



**SWELL SUNSTONE**  
by Mae Engelgeer



**SWELL ROSE QUARTZ**  
by Mae Engelgeer



**AIRES**  
by Megan Grehl



**AXEL**  
by Megan Grehl



**CELESTIAL**  
by Edward van Vliet



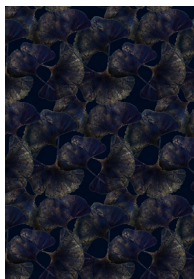
**DIAMOND TREE**  
by Edward van Vliet



**GARDEN OF EDEN GREY**  
by Edward van Vliet



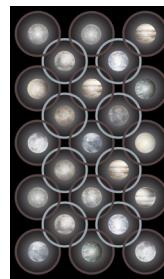
**GARDEN OF EDEN LIGHT GREY**  
by Edward van Vliet



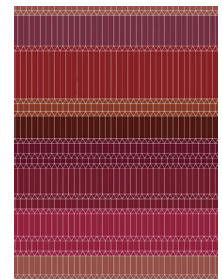
**GINKGO LEAF**  
by Edward van Vliet



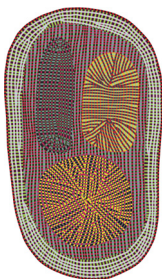
**DUTCH SKY**  
by Edward van Vliet



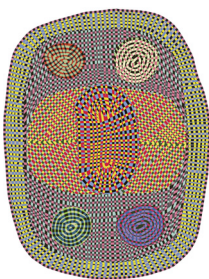
**PLANETAS**  
by Edward van Vliet



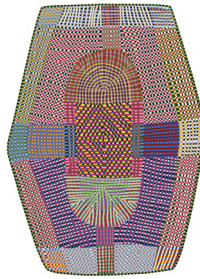
**ZIGZAG**  
by Edward van Vliet



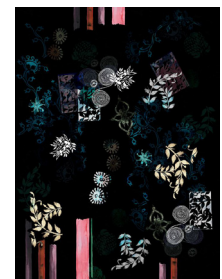
**AMOEBA**  
by Bertjan Pot



**WILD**  
by Bertjan Pot



**FREAKY**  
by Bertjan Pot



**LE TEMPLE JAIS**  
by Maison Christian Lacroix

All our signature rugs are available in Low Pile Polyamide, Soft Yarn Polyamide and Wool. Some rugs are available in different colorways and sizes. Please visit [www.mooincarpets.com](http://www.mooincarpets.com) to see the full collection and technical information in detail.











## SIGNATURE RUGS



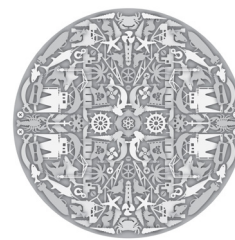
JEWELS GARDEN  
*Maison Christian Lacroix*



MALMAISON AQUAMARINE  
*Maison Christian Lacroix*



SCRIBBLE  
*Front*



FIRMSHIP  
*Studio Job*



L'AFRIQUE  
*by Studio Job*



HERIZ  
*by Valerio Sommella*



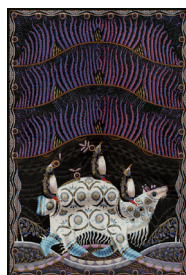
LILIHAN  
*by Valerio Sommella*



SHIRAZ  
*by Valerio Sommella*



VULTURE  
*by Klaus Haapaniemi*



POLAR BYZANTINE-CHAPTER I  
*by Klaus Haapaniemi*



POLAR BYZANTINE-CHAPTER II  
*by Klaus Haapaniemi*



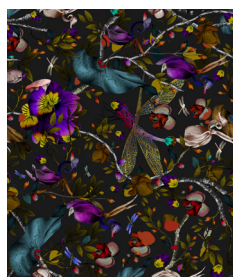
POLAR BYZANTINE-CHAPTER III  
*by Klaus Haapaniemi*



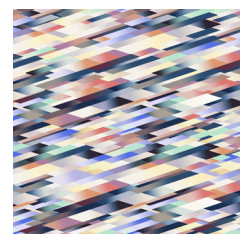
POLAR BYZANTINE-CHAPTER III  
*by Klaus Haapaniemi*



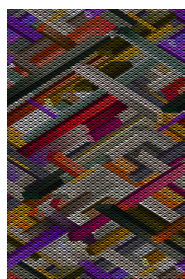
POLAR BYZANTINE-CHAPTER V  
*by Klaus Haapaniemi*



BIOPHILLIA  
*by Kit Miles*



DIAGONAL  
*by Kit Miles*



KUBRICK  
*by Kit Miles*



URBAN MANDALA  
*by Neal Peterson*



DAZZLING DIALOGUES  
*by Noortje van Eekelen*



UTOPIAN FAIRY TALES  
*by Noortje van Eekelen*

All our signature rugs are available in Low Pile Polyamide, Soft Yarn Polyamide and Wool. Some rugs are available in different colorways and sizes. Please visit [www.mooicarpets.com](http://www.mooicarpets.com) to see the full collection and technical information in detail.



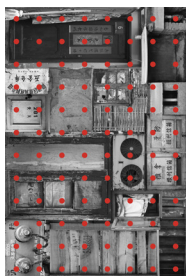
# SIGNATURE RUGS



LIQUID BIRCH  
*Broersen & Lucáks*



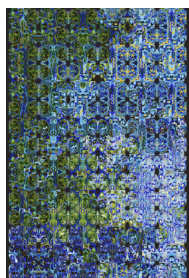
LIQUID MAPLE  
*Broersen & Lucáks*



REMNANT 1  
*by Neri & Hu*



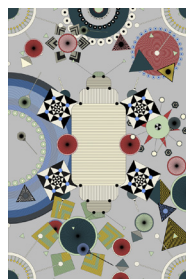
REMNANT 2  
*by Neri & Hu*



ECO ALLIANCE  
*by Marian Bantjes*



OCTOCORALLIA  
*by Kustaa Saksi*



DREAMSTATIC  
*by David/Nicolas*



COUTURE ROSE FUCHSIA  
*by Tricia Guild*









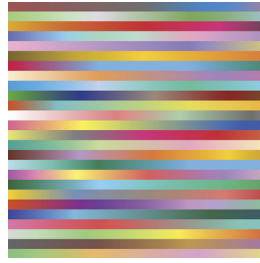




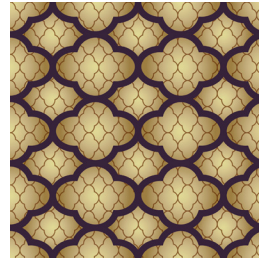
# SIGNATURE BROADLOOM



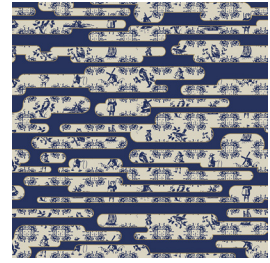
MINI TATAMI  
by Bertjan Pot



STRIPES  
by Bertjan Pot



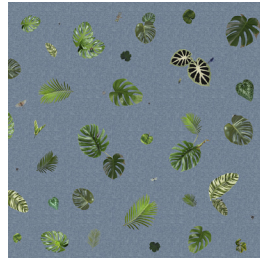
CLOUDS  
by Edward van Vliet



DUTCH SKY  
by Edward van Vliet



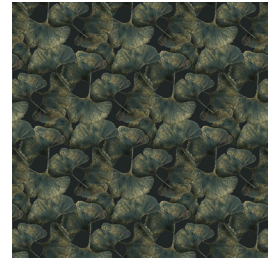
BIRDS  
by Edward van Vliet



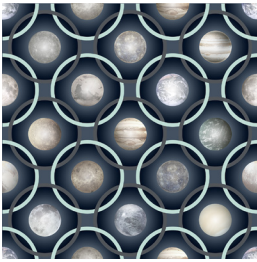
TROPICAL LEAF  
by Edward van Vliet



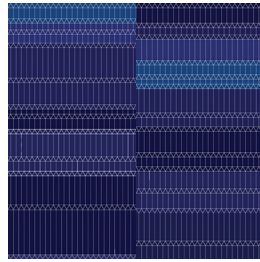
IKEBANA  
by Edward van Vliet



GINKGO LEAF  
by Edward van Vliet



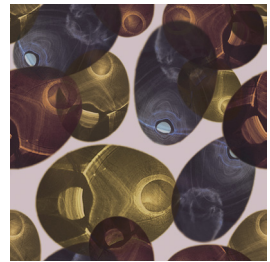
PLANETAS  
by Edward van Vliet



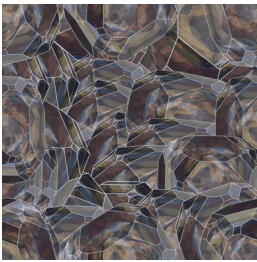
ZIGZAG  
by Edward van Vliet



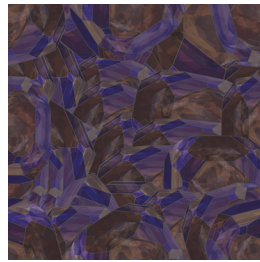
WALKING ON CLOUDS  
by Front



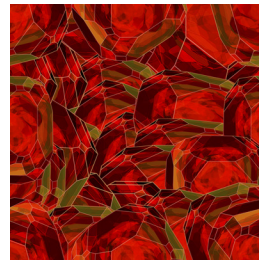
REFLECTIONS AUTUMN  
by Luca Nichetto



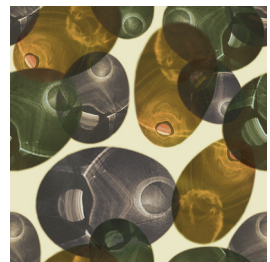
CRYSTAL BROWN  
by Ingimar Einarsson



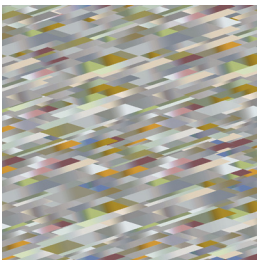
CRYSTAL PURPLE  
by Ingimar Einarsson



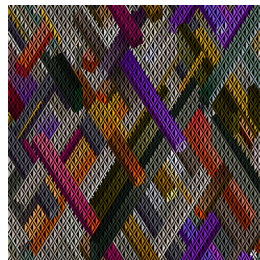
CRYSTAL RED  
by Ingimar Einarsson



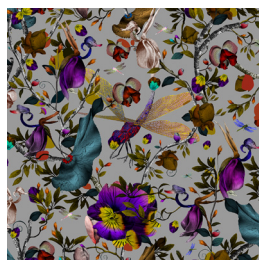
REFLECTION SPRING  
by Luca Nichetto



DIAGONAL GRADIENT  
by Kit Miles



KUBRICK  
by Kit Miles



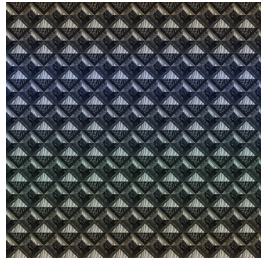
BIOPHILLIA SLATE  
by Kit Miles



POLAR BYZANTINE  
by Klaus Haapaniemi



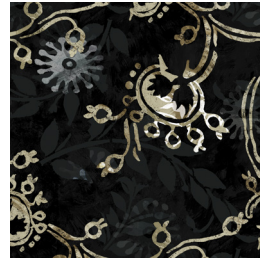
# SIGNATURE BROADLOOM



PALAIS ROYAL  
by Maison Christian  
Lacroix



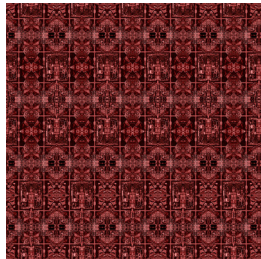
LE TEMPLE BLEU/NIGELLE  
by Maison Christian  
Lacroix



LE TEMPLE BRONZE  
by Maison Christian  
Lacroix



MALMAISON  
by Maison Christian  
Lacroix



VERSAILLES X BEIJING  
by Marcel Wanders



DELFT BLUE  
by Marcel Wanders



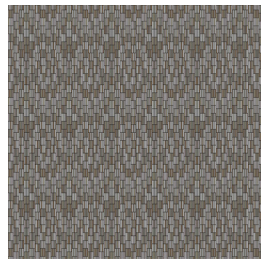
EDEN QUEEN  
by Marcel Wanders



FESTIVAL INFERNO  
by Marcel Wanders



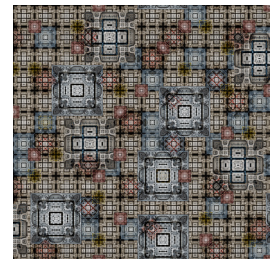
FOOLS PARADISE  
by Marcel Wanders



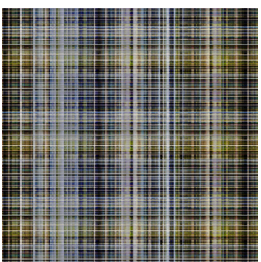
GURU GARDEN  
by Marcel Wanders



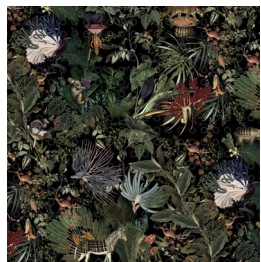
O.O.O.  
by Marcel Wanders



S.F.M. #078  
by Marcel Wanders



TARTAN HAZE  
MULTICOLOUR  
by Marcel Wanders



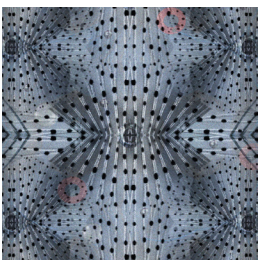
MENAGERIE OF  
EXTINCT ANIMALS  
by Moooi



DOD PAVONE  
by Moooi



DWARF RHINO  
by Moooi



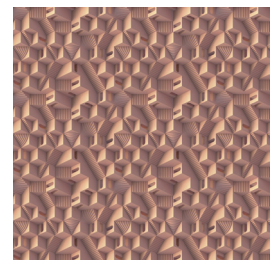
FLYING CORAL FISH  
by Moooi



DAZZLING DIALOGUES  
by Noortje van Eekelen



UTOPIAN FAIRY TALES  
by Noortje van Eekelen



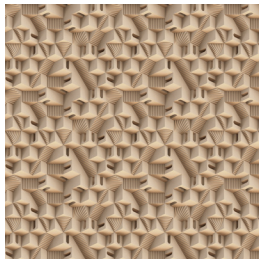
MAZE MIAMI  
by Note



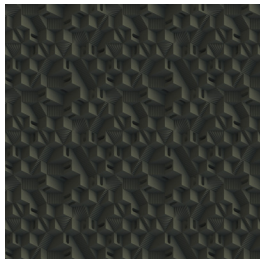




SIGNATURE BROADLOOM



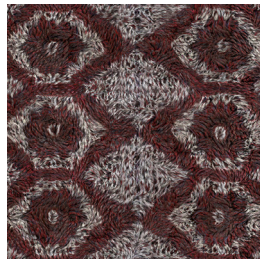
MAZE PUGLIA  
*by Note*



MAZE TICAL  
*by Note*



POMANDER SLATE  
*by Tricia Guild*



DIAMOND HALL  
*by Valerio Sommella*



IVORY HALL  
*by Valerio Sommella*



MIRROR HALL  
*by Valerio Sommella*





*Hospitality*



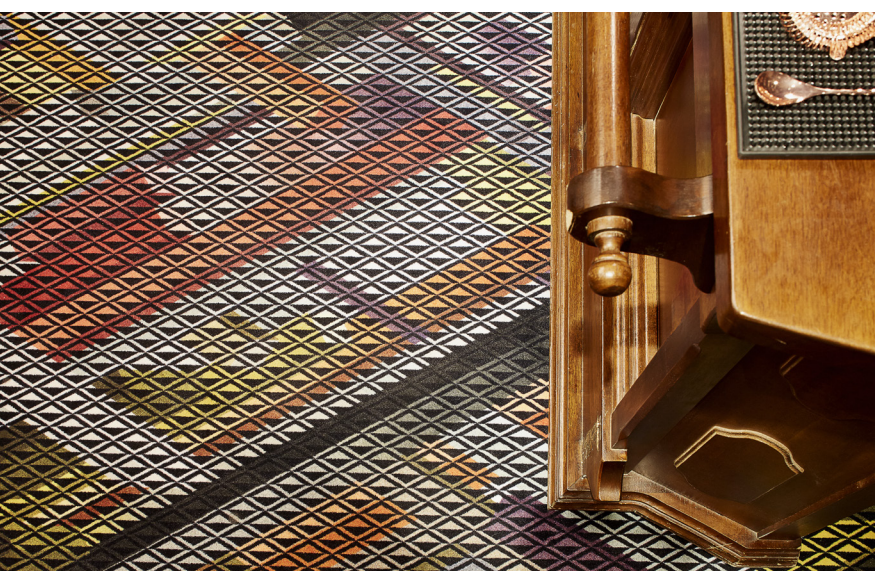
*Retail*



*Retail*



*Office*



*Hospitality*



*Art & Design*



SIGNATURE CARPETS APPLIED



Office



Office



Retail



Hospitality



Office



Retail



**MOOOI AMSTERDAM**

Westerstraat 187  
1015 MA Amsterdam  
The Netherlands  
T +31 (0)20 528 77 60  
amsterdam@moooi.com

**MOOOI LONDON**

23 Great Titchfield Street  
London W1W 7PA  
United Kingdom  
T +44 (0)20 8962 5691  
london@moooi.com

**MOOOI NEW YORK**

36 East 31st Street  
New York, NY 10016  
United States  
T +1 646 396 04 55  
ny@moooi.com

**MOOOI STOCKHOLM**

Norr Mälarstrand 26  
112 20 Stockholm  
Sweden  
T +46 (0)7 3332 7200  
stockholm@moooi.com

**MOOOI TOKYO**

Three F Minamiaoyama Building  
6-11-1 Minamiaoyama  
Minato-ku,  
Tokyo, 107-0062 Japan  
T +81(0)3-3400-1040  
tokyo@moooi.com

**MOOOI CARPETS HQ**

Noordereinde 147a  
1243 JM 's-Graveland  
The Netherlands  
T +31 (0)35 628 28 62  
sales@moooicarpets.com  
info@moooicarpets.com  
www.moooicarpets.com

**For product info about the Moooi collection go to [www.moooi.com](http://www.moooi.com)**

©MOOOI B.V. All rights reserved

Copyright © 2019 MCI Carpets BV. All rights reserved for all text, layout and images.

No text, layout or pictures may be used or reproduced for commercial purposes by third parties, including dealers, retailers, internet shops and other, without the prior written approval by MCI Carpets BV. The use of text, layout and images or its reproduction of such in press publications – both written and digital – is permitted, under the condition that MCI Carpets BV is credited.

Although MCI Carpets BV carefully revised the content in this catalogue, some small mistakes may occur.







