



m o o i

A
Life
EX
TRA
ORDI
NARY



Moooi presents a life extraordinary!

When we started *Moooi* in 2001, we promised to become a legendary brand. No one can create a legendary brand by doing me-too products or branding. For that reason we have developed our own fresh approach to product and style. Exclusive, daring, playful, exquisite and based on the belief that design is a question of love.

We don't tell designers what to do, we listen to what designers want to make. We try to realise their dreams. Dreams realized through a unique, iconic mix of lighting, furniture and accessories, which outlast everyday interiors. Eclectic and always on the edge of commercial reality and cultural interest. To trigger, to create conversation pieces which make your environment more special. To create an extra 'O' in terms of value and beauty.

In addition to our product collection we have extended our brand with the introduction of a carpet collection together with *Moooi Carpets*, a series of hotel amenities with *Luxury Hotel Cosmetics* for an extra touch of beauty at the start of your day! In 2017 we partnered with *Gentle Monster* to create a collection of four new styles of sunglasses, each visually portraying the fluid evolution around the third 'O' in *Moooi*.

Moooi presents creative luxury for a well curated life. Innovative, provocative and poetic at the same time. *A life extraordinary!*

MARCEL WANDERS

Designer / Art Director / Founder



Contents

12	Jackson Chair
16	Charleston Sofa
25	Zio Family
28	Construction Lamp Suspended
32	Perch Light Family
44	Moooi X Gentle Monster
48	O.
50	Container Family
62	Smoke Family
70	Prop Light Family
79	Amami Sofa
88	Heracleum
104	Raimond
122	Monster
128	Moooi X Luxury Hotel Cosmetics
144	Paper Family
154	Bart
157	T Lamp
159	Turbo Table
162	NR2
168	Moooi Carpets
172	Coppélia
178	Boutique Horizons
184	Canal Chair
196	Meshmatics Chandelier
212	Index
224	Colophon

Charleston Sofa by MARCEL WANDERS,
NR2 M by BERTJAN POT in white, Paper
Desk 140 by STUDIO JOB in ochre brown
RAL 8001, Mexico City Rug by NEAL
PETERSON for MOOOI CARPETS





MICROSCULPTURE

The Insect Portraits of Levon Biss

Microsculpture is a ground breaking project by the British photographer Levon Biss that presents insect specimens from the *Oxford University Museum of Natural History* like never before. These images reveal an unexpected and often breathtaking beauty and make visible the many intricate adaptations to the form of insects – what entomologists call their microsculpture.

Created through a collaboration between Levon and the museum, this series of beautifully-lit, high magnification portraits captures the microscopic form of insects in striking high-resolution detail.

Displayed as large scale photographic prints up to 3m high, the *Microsculpture* project provides the viewer with an unique opportunity to study and appreciate this hidden world.

Formed at scales too tiny for us to perceive and with astonishing complexity, the true structure and beauty of insects remains mostly hidden. Their intricate shapes, colours and microsculpture are dizzying in their variety, but it takes the power of an optical microscope or camera lens to experience insects at their own scale.

From the collections of the *Oxford University Museum of Natural History*.

MICROSCULPTURE.NET | LEVONBISS.COM



arihiro
miyake



danny
fang



edward van vliet



freshwest



umut
yamac



luca
nichetto



front



jaime hayon



joel
degermark



joep
van lieshout



jonas
forsman



joost
van bleiswijk



jurgen bey



lorenza bozzoli

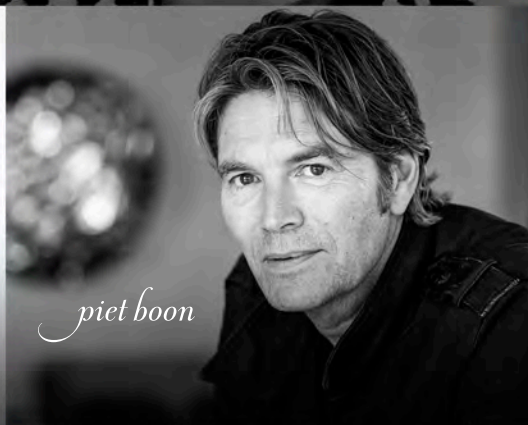


maarten
baas

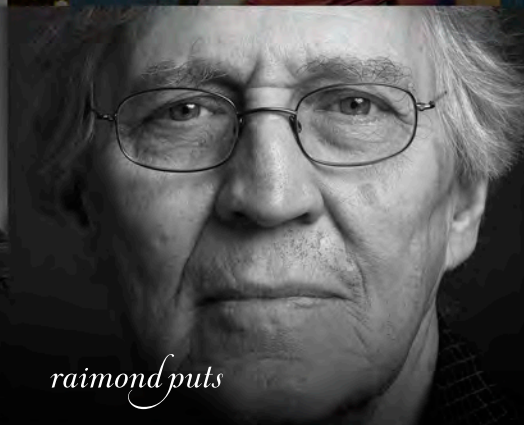
We listen to what designers want to make.
We try to realise their dreams!



bertjan
pot



piet boon



raimond puts



marcel
wanders



neri & hu



nika
zupanc



ron gilad



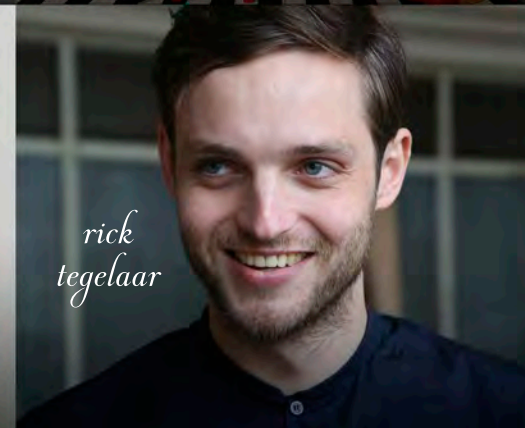
sjoerd vroonland



studio job



richard hutten



rick
tegelaar



roderick
vos

Jackson Chair & Footstool
by MARCEL WANDERS in
signature leather upholstery
with embroidered backrest

*The Jackson's signature design with premium
leather and embroidered detailing transforms
this chair into a modern-day throne.*



Jackson Chair's signature leather is a premium European rawhide. The leather has a matt, soft surface with subtle, but visible texture and is embroidered with a rich, elegant pattern to create a one of a kind piece.

DELFT BLUE NO. 08
BY MARCEL WANDERS



A classic sofa, elegant and comfortable, dressed in stylish dark brown eco-leather with embroidered accents, that has been shifted into a vertical posture. Its grace becomes slender and elongated, tall and majestic, while it plays with our mind-set and expectations.

CHARLESTON SOFA BY MARCEL WANDERS





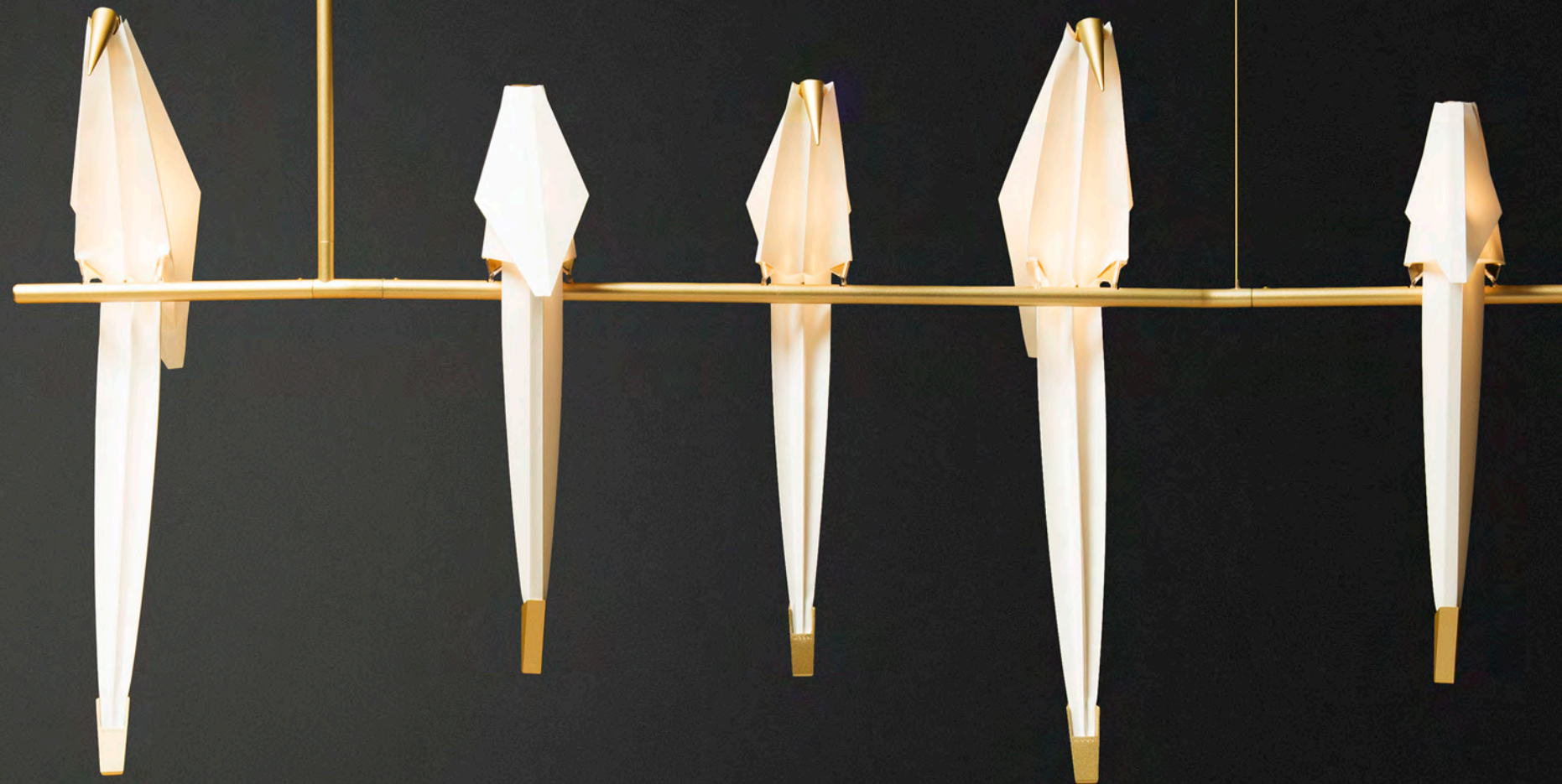
Left: Mexico City Rug by NEAL
PETERSON for MOOOI CARPETS
Right: Bart Sofa by MOOOI WORKS
in Cervino Mud upholstery, Delft Blue
No. 8 by MARCEL WANDERS



Construction Lamp L by JOOST VAN BLEISWIJK in white, Ginko Leaf Rust Broadloom by EDWARD VAN VLIET for MOOOI CARPETS, Nest Chair & Sofa by MARCEL WANDERS in Alfresco Ochre upholstery with satin white frame, Nut Dining Chair by MARCEL WANDERS in Oray Ochre upholstery with cinnamon stained oak finish, Perch Light Branch by UMUT YAMAC



Perch Light Branch by UMUT YAMAC,
Zio Dining Chair by MARCEL
WANDERS in Liscio Perla upholstery
with white wash stained oak finish, Zio
Dining Table by MARCEL WANDERS
in white wash stained oak finish



*The cheerful, chirping companions in the Perch Light family
are made of synthetic paper, folded in an origami style, and will
sway back and forth when nudged or faced with a light breeze.*

Left: Zio Dining Chair by MARCEL WANDERS in Liscio Perla upholstery with natural oil stained oak finish Right: Zio Dining Chair by MARCEL WANDERS in Manga Brown upholstery with white wash stained oak finish, Zio Dining Table by MARCEL WANDERS in cinnamon/white wash composition stained oak finish

Zio Family

Evokes vintage design with a low-slung profile and slender solid oak frame.



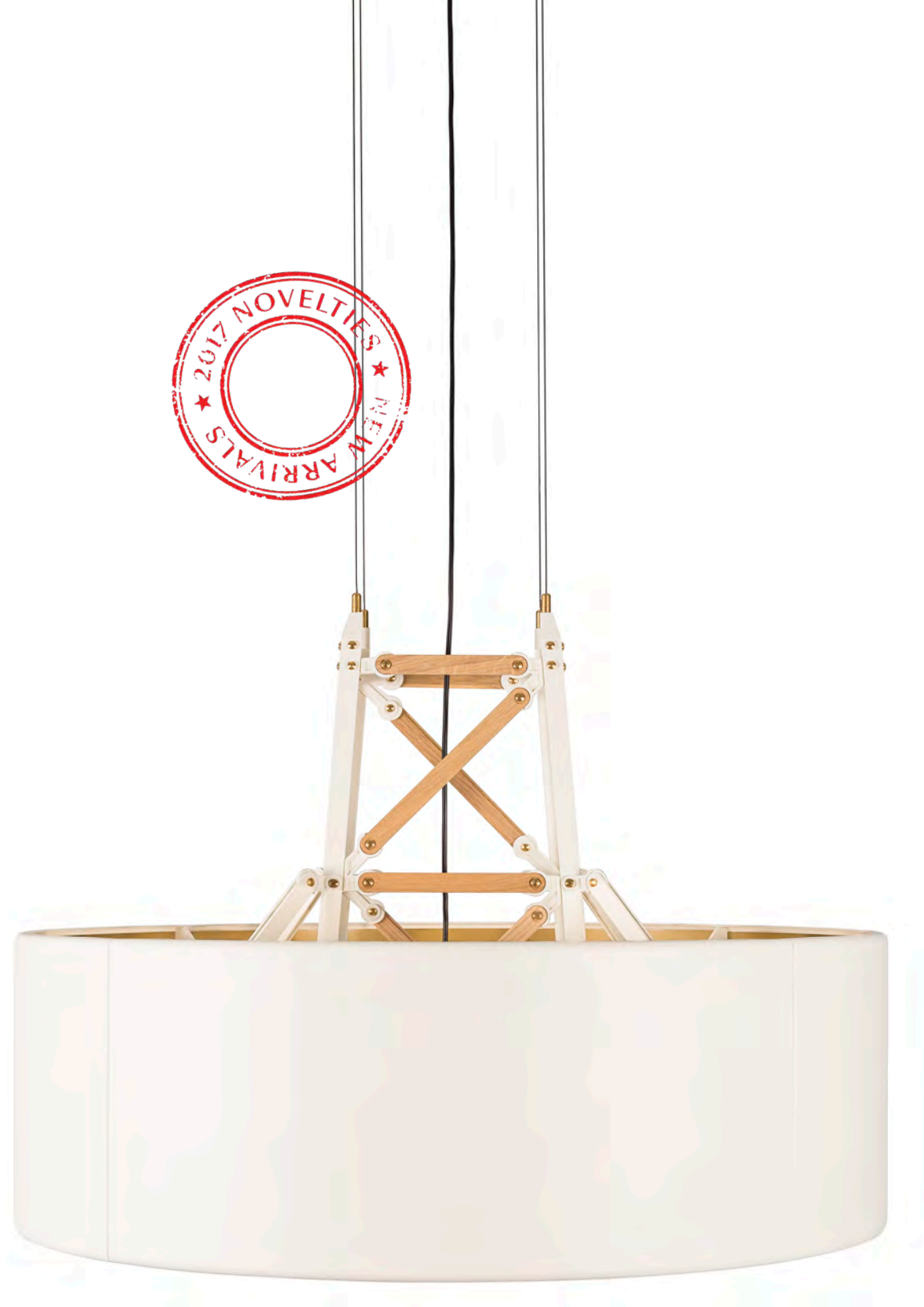
In most households the table is the central piece of the dining room, the heart around which families gather, entertain and relax. Many special memories revolve around its steady presence. With their graceful look and refined details, the *Zio Dining Chair* & *Zio Dining Table* bring a touch of style to any moment.

Design by Marcel Wanders



Left: Ginko Leaf Rust Broadloom by
EDWARD VAN VLIET for MOOOI
CARPETS Right: Construction Lamp M
& L by JOOST VAN BLEISWIJK in black,
Monster Armchair by MARCEL WANDERS
in Divina Melange 180 upholstery





The industrial look of the Construction Lamp Suspended, with the signature electricity pole structure, blends in nicely with its elegant colour nuances, stylish brass and solid oak details.

CONSTRUCTION LAMP SUSPENDED BY JOOST VAN BLEISWIJK
in white



CROCHET TABLE
BY MARCEL WANDERS



*Fall head over heels
for the Crochet Table,
where a lace pattern is
innovatively strengthened
into a fully functional
coffee or side table.*

Nut Dining Chair by MARCEL
WANDERS in Oray Griffin upholstery
with cinnamon stained oak finish



Perch Light Family

*The purity of paper with the material
majesty of brass.*



What is more poetic and elegantly captivating than a bird perched on a branch, flirting, singing and celebrating life? We all recognize this image and steal a moment from our precious time to admire this triumph of nature and beauty. Inspired by such natural glory and forever fascinated by the combination of balance and movement, *Umut Yamac* has created six lamps which captivate the viewer through motion, poetry and grace: the *Perch Light Family*.

Design by *Umut Yamac*





Perch Light Family



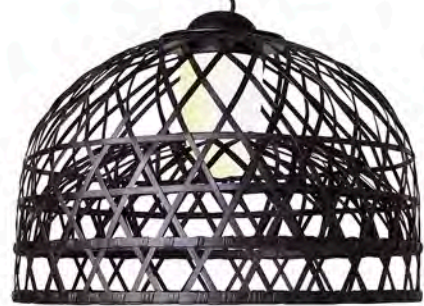
UMUT YAMAC

A London based architect and designer with Turkish heritage. He graduated from the *Bartlett School of Architecture, UCL* with a distinction in design and went on to work for a number of internationally renowned architects and designers before establishing his own practice in 2011.

The *Perch Light Family* is a balancing sculptural light made of folded paper and brass. The lamp takes the form of an abstract bird which appears to be delicately balanced on its metal perch. The bird is illuminated through contact with the perch and lets the bird balance and swing without any cables whilst maintaining luminance.

The design was inspired by nature and in particular, the elegance and beauty of a bird sitting on its perch. The bird has been precisely counterbalanced to sit in a resting position on its perch unless activated into gentle motion by wind or touch.

The poetics of an emperor's life, a life no longer relevant in today's world, can be abstracted in the form of an object such as the Emperor lamp by Meri & Ku. The use of hand-crafted bamboo weaving in an industrial product creates an elegant yet uncanny design statement. A lamp so particular & majestic that it could become your personal nightingale... forever by your side to brighten up your days.



CLOUD SOFA BY MARCEL WANDERS
in Bouclé Black/White upholstery

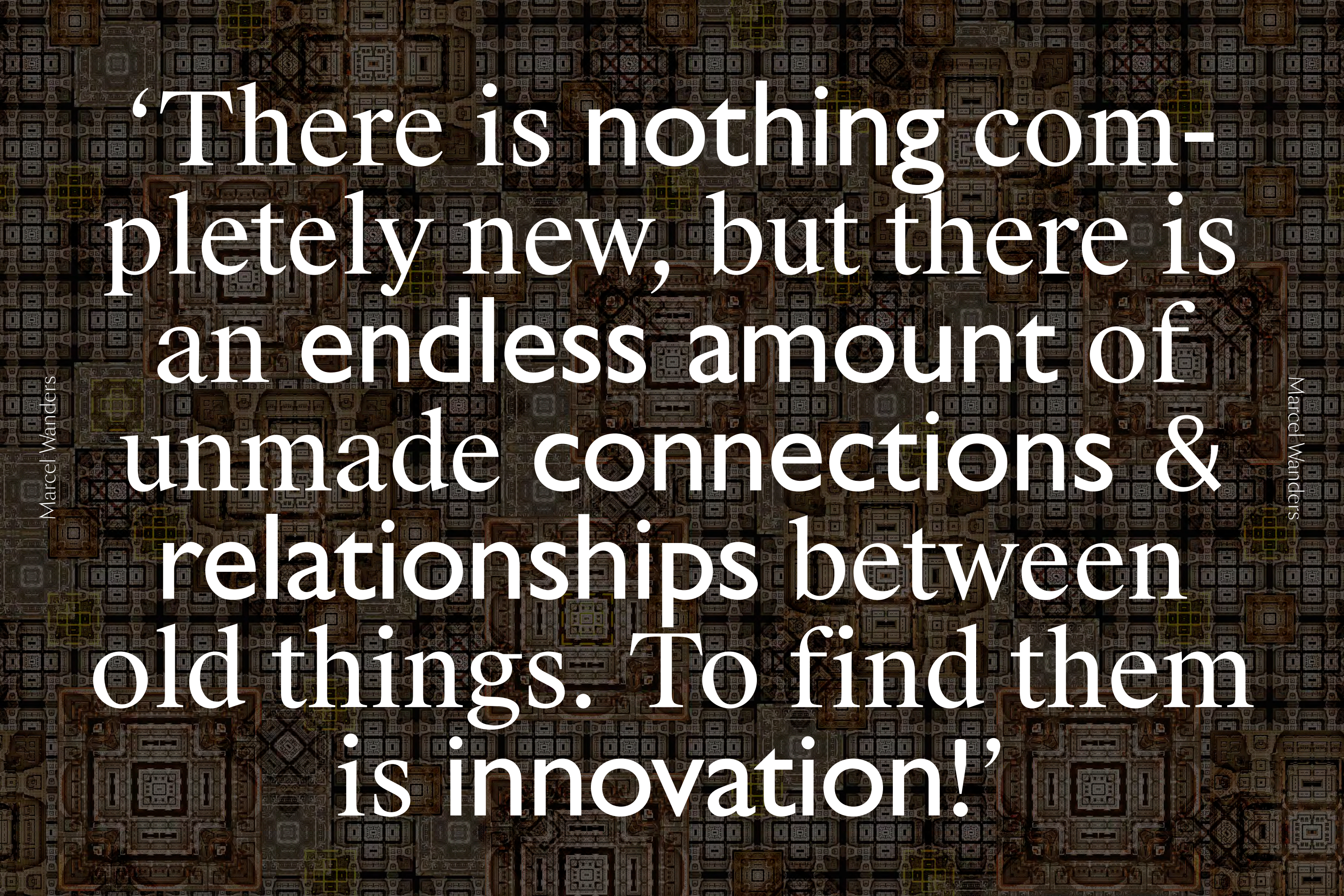




Carbon Chair by BERTJAN POT &
MARCEL WANDERS with cap and pad,
Cloud Sofa by MARCEL WANDERS in
Velour Moss upholstery, Cocktail Chair
by MARCEL WANDERS in Bouclé Black/
White upholstery with white wash stained
oak legs, Common Comrades by NERI
& HU Emperor, Seamstress & Scholar,
Container Table New Antiques by MARCEL
WANDERS in white with wooden table top,
Emperor S, M & L by NERI & HU, Utopian
Fairy Tales Joy Broadloom by NOORTJE
VAN EEKEL for MOOOI CARPETS



Left: Utopian Fairy Tales Joy Broadloom
by NOORTJE VAN EEKELLEN
for MOOOI CARPETS Right:
Clusterlamp by JOEL DEGERMARK
with unexpected light bulb set



‘There is nothing completely new, but there is an endless amount of unmade connections & relationships between old things. To find them is innovation!’

Moooi X Gentle Monster

Moooi and *Gentle Monster* present a new and exciting collaboration: *The Third Eye Collection*. The Dutch design company and Korean eyewear brand, both known for their creative luxury and high-end experimentation, have partnered to create a collection of four new styles of sunglasses, each visually portraying the fluid evolution around the third 'O' in *Moooi*.

Inspiration for the collection came from ancient Egyptian hieroglyphic drawings which connected the graphic symbol 'O' to a human eye. In mystical beliefs, the inner third eye represents the vision beyond ordinary sight. This extraordinary heritage shaped the designs of the *Moooi X Gentle Monster* silhouettes, which all start with a circular lens at their centre. This theme is also carried through in the names of the four styles – *Trinity*, *Divinity*, *Sincerity* and *Infinity*.

The Third Eye Collection will be available at *Moooi* showrooms and *Gentle Monster* flagship stores worldwide, as well as online at gentlemonster.com and moooi.com. There are multiple colour options available to fit any style.



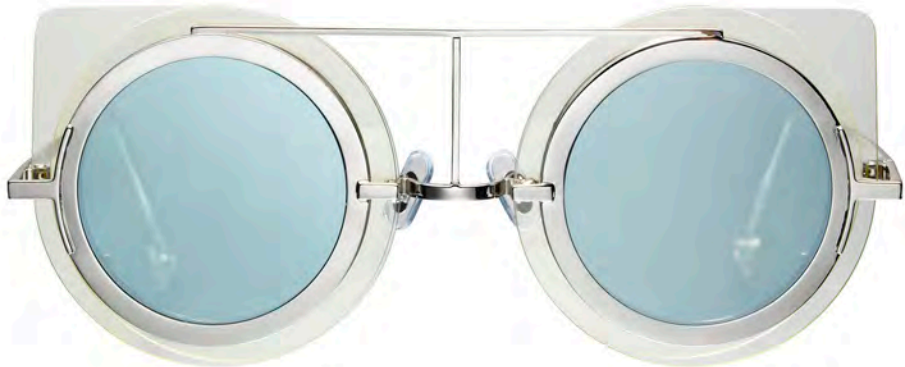
m o o o i X GENTLE MONSTER



m o o i x GENTLE MONSTER



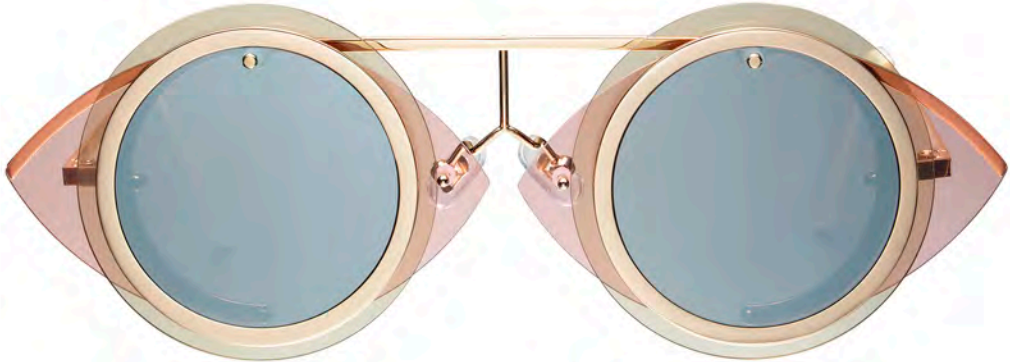
DIVINITY



TRINITY



INFINITY



SINCERITY

O. by MARCEL WANDERS in terracotta with matching upholstery, light grey and concrete, Utopian Fairy Tales Power Rug by NOORTJE VAN EEKELLEN for MOOOI CARPETS



O.
*Rocking away in a
giant O-shaped seat.*



Tucked into the rounded body, feel free to let your imagination wonder, nursed by the rhythmic movement of this fluctuating beauty. More than a seater, yet not really a rocking chair, O. is an icon with an identity of its own. As wide and tall as a person and available in various elegant colour nuances, O. is a masterpiece of creative thinking and pure funfair. Cushioned all-round in matching colour, inviting you to relax and have fun at the same time.

Design by Marcel Wanders

Container Family

Bold, beautiful and built to last.

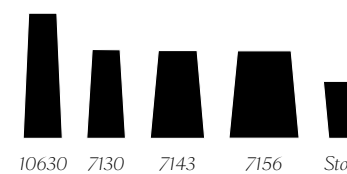


The *Container Family* concept by *Marcel Wanders* is a versatile system that has endless composition possibilities to fit in any space. With combinations to suit your home, office or public space the *Container Family* can certainly exceed any interior requirements.

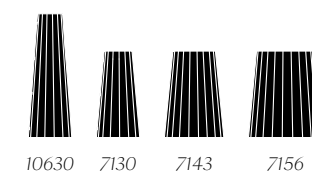
Design by *Marcel Wanders*



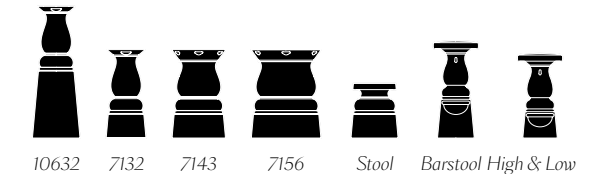
Container



Container Bodhi



Container New Antiques



Carbon Chair by BERTJAN POT &
MARCEL WANDERS with cap and pad,
Container Table Bodhi by MARCEL
WANDERS in natural oil stained oak
finish with Linoak Black table top, Random
Light M by BERTJAN POT in black



Container Family



MARCEL WANDERS

"The original *Container Table* is still today a unique table in the world I think," Wanders says. "It's a wonderful collection that allows you to have all the tables you need in one beautiful typology."

The *Container Table* features a hollow tapered plastic base, which can be filled with sand to provide stability for the screw-on top. It's light when you transport it and heavy and stable when you use it. A later version of the table, called *Container Table New Antiques*, features a curved ornamental base.

The collection has been an important icon for the brand, so the concept was further developed. The *Container Table Bodhi* has the tapered, plastic base, but is wrapped with vertical solid oak slats. The table features a linoak top, which consists of linoleum and an oak trim around the edge.

The table's more natural look expands the range of settings the table can be used in. *Container Table Bodhi* is the latest addition to the collection, which is available in a variety different colour, size and shape combinations.

The Container Table concept is a fully versatile system that has endless composition possibilities to fit in any space. With combinations to suit your home, office or public space the Container Table can certainly exceed any requirements.



CONTAINER TABLE NEW ANTIQUES BY MARCEL WANDERS
in black with HPL table top in black

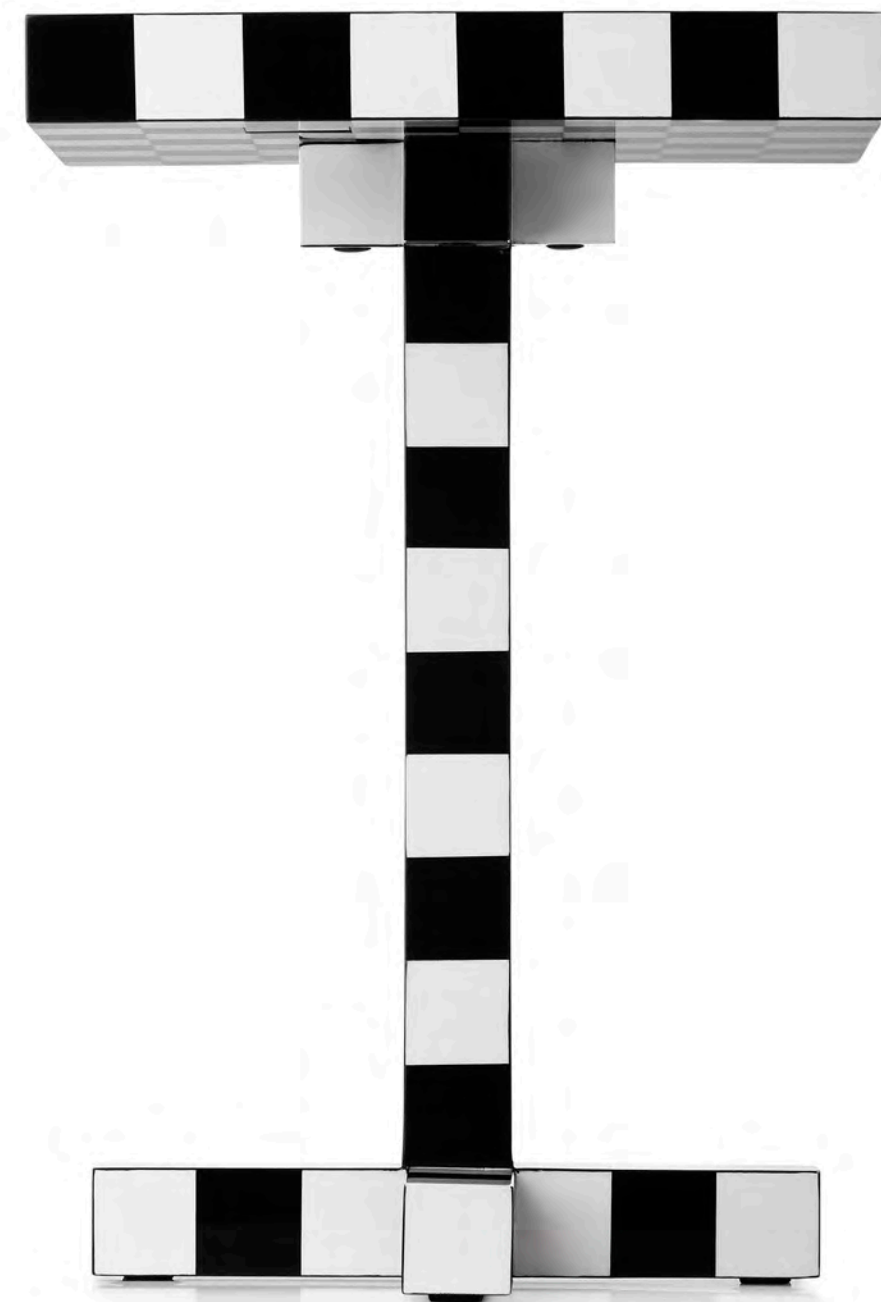




CARBON CHAIR
BY BERTJAN POT & MARCEL WANDERS

Carbon Barstool High by BERTJAN
POT & MARCEL WANDERS, Container
Table by MARCEL WANDERS in black
with HPL table top in black, Non
Random 48 by BERTJAN POT in black





The Chess Table's glossy chequered finish invites fun and fantasy out to play.

CHESS TABLE BY FRONT

Amami Pouf S, M & L by LORENZA
BOZZOLI in dark grey upholstery, Bassotti
Coffee Table by MARCEL WANDERS
in Grey Pietra marble, Chess Table by
FRONT, Kubrick Broadloom by KIT
MILES for MOOOI CARPETS, Smoke
Chair by MAARTEN BAAS, T Lamp by
MARCEL WANDERS, Valentine Table
Lamp by MARCEL WANDERS in chrome



Smoke Family

Furniture finished with fire.

Each item of the *Smoke Family* share the unfamiliar and untamed finish that is categorised by fire. All items are made of burnt solid wood, finished with epoxy resin and upholstery in premium black leather. The family consists of the *Smoke Chair*, *Smoke Dining Chair*, *Smoke Dining Armchair* and the *Smoke Chandelier*.

Design by *Maarten Baas*

Smoke Chair & Smoke Chandelier
by MAARTEN BAAS





Smoke Family



MAARTEN BAAS

Baas is considered to be one of the most influential Dutch designers of the beginning of the 21st century. He is often described as an “author designer,” of which his works lie on the boundaries between art and design. His work is known as rebellious, playful, intellectual, theatrical and artistic.

Furniture finished with fire. The beauty and character of burned wood is now captured in a long lasting material, creating the strange sensation of sitting on burnt furniture.

Maarten Baas interpreted his fascination for the element fire with a groundbreaking approach. With the innovative idea of creating furniture finished with fire. Capturing the burning flames into the solidity of wood. More practically, in the production process wooden pieces of furniture are set to fire and burned. When they become completely black the fire is extinguished and the pieces of burned furniture are impregnated with resin to capture the beauty of burned wood.

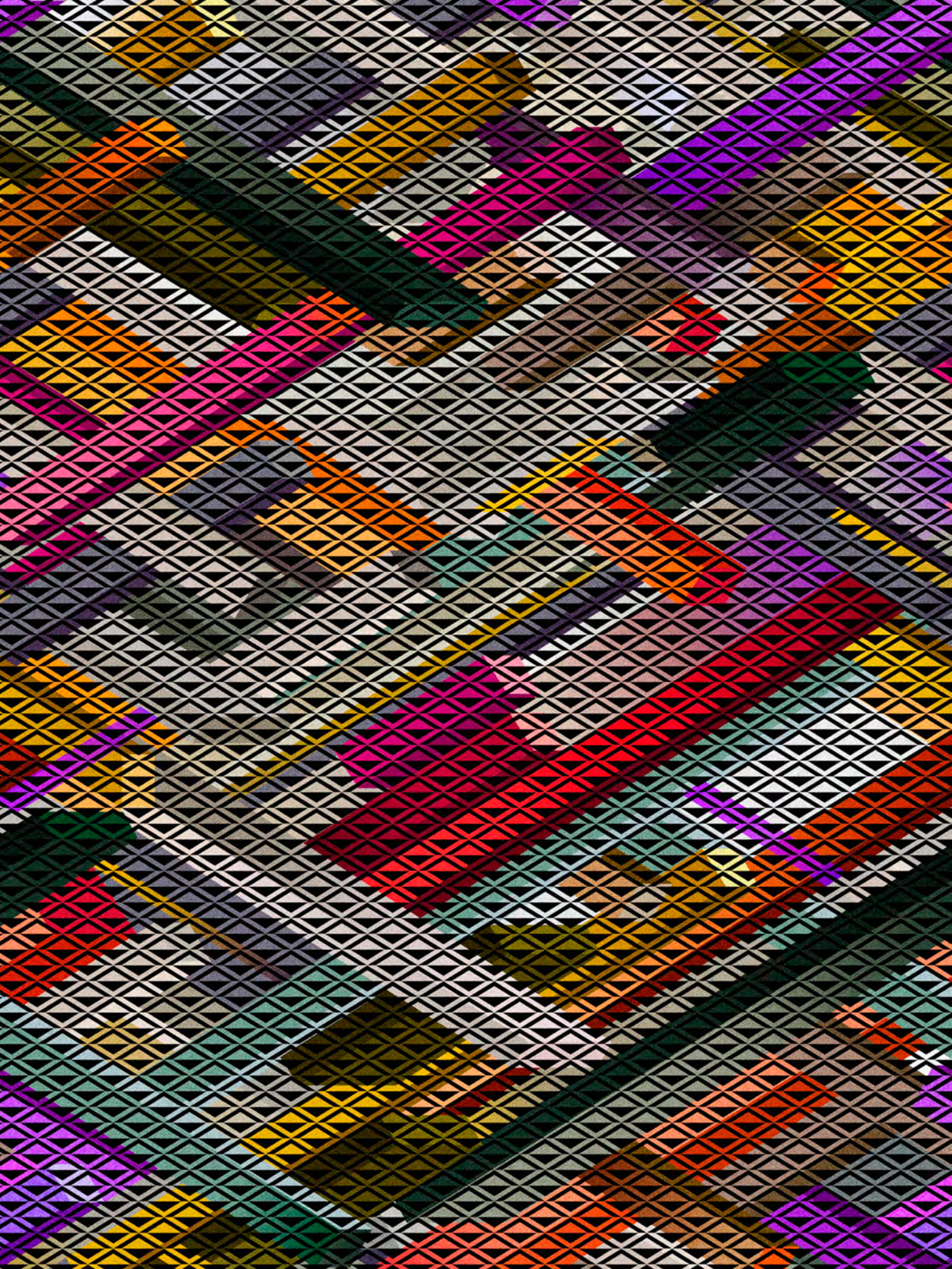
Each chair is unique due to this exceptional production process. Just like the *Phoenix*, the *Smoke Family* objects are reborn from their ashes, gaining new vitality and beauty in a very unusual way.



Each item from the Smoke Family share the unfamiliar and untamed finish that is characterized by fire



SMOKE DINING CHAIR BY MAARTEN BAAS



Left: Kubrick Broadloom by KIT MILES
for MOOOI CARPETS Right: Prop
Light Round Floor by BERTJAN POT,
Container Stool by MARCEL WANDERS
in black, Container Table by MARCEL
WANDERS in black with HPL top in black



Prop Light Family

*In the cinema of life,
lighting is everything.*

We have round lights, we have straight lights. We have them with lights on one side, we have them with lights on two sides. You can hang them high, low, horizontally, vertically or even hang them in an angle. Put them on the floor, hang them on your wall or down from the ceiling. We find it very hard to imagine an interior where this prop is not in place.

Design by *Bertjan Pot*

Prop Light Round Double
Vertical by BERTJAN POT





PROP LIGHT ROUND WALL BY BERTJAN POT





urban hike

BY MARCEL WANDERS



Left: Amami Sofa by LORENZA BOZZOLI in dark grey upholstery, Bassotti Coffee Table by MARCEL WANDERS in Grey Pietra marble, Kubrick Broadloom by KIT MILES for MOOOI CARPETS, Valentine by MARCEL WANDERS in chrome, Valentine Flat by MARCEL WANDERS in chrome, Urbanhike by MARCEL WANDERS

‘My imagination
chases female arche-
types intentionally.
Frivolous, even naive
objects are my favour-
ite victims.’



The Amami Sofa exudes elegance and luxury with its heart-warming velvet and fringed detailing.

AMAMI SOFA & POUF BY LORENZA BOZZOLI
in dark grey upholstery





Biophillia Slate Broadloom by KIT MILES for
MOOOI CARPETS, Bell Lamp by MARCEL
WANDERS in white with gold bow, Canvas
Sofa & Footstool by MARCEL WANDERS
in Trickle Peat upholstery, Cocktail Chair
by MARCEL WANDERS in Oray Rust
upholstery with cinnamon stained oak legs,
Crochet Table by MARCEL WANDERS,
Filigree Floor Lamp by RICK TEGELAAR,
Heracleum The Small Big O by BERTJAN
POT powered through Electrosandwich®
by MARCEL WANDERS in copper,
Perch Light Floor by UMUT YAMAC,
The Golden Chair by NIKA ZUPANC

Trickle is an exclusive stretchy, woven textile produced in the Netherlands which is suitable for contract and domestic projects. Flame, soil and stain resistant, this fabric elevates every piece of furniture.



DELFT BLUE NO. 05
BY MARCEL WANDERS

Amami Pouf S, M & L by LORENZA
BOZZOLI in dark grey upholstery, Paper
Cupboard by STUDIO JOB in Patchwork

Paper Patchwork is a playful patchwork of sparkling colours combined with the purity of natural wood, like in old fashioned cars or in the patchwork quilts carefully sewed by our favorite aunt.





The delicate-looking Heracleum by Bertjan Pot packs a punch! The innovative Electrosandwich® technology transforms the branches into wires that carry the charge to the leaves with extraordinary beauty.



CANVAS SOFA & FOOTSTOOL BY MARCEL WANDERS
in Abbracci Black upholstery

Heracleum Family

The innovative Electrosandwich® technology transforms the branches into wires that carry the charge to the leaves with extraordinary beauty.

Decorative LED lamp inspired by the *Heracleum* plant. The white leaves/lenses ramify from copper or nickel coated branches, creating a lamp with a very technical structure, yet natural look. By using the innovative *Electrosandwich®* technology, *Heracleum* is very thin and delicate, a design not possible with normal wires.

Design by *Bertjan Pot*
Powered through *Electrosandwich®* by *Marcel Wanders*

Heracleum Small by BERTJAN POT
powered through Electrosandwich®
by MARCEL WANDERS in nickel,
Nut Dining Chair by MARCEL
WANDERS in Oray Sand upholstery
with cinnamon stained oak finish





Heracleum Family



BERTJAN POT
Heracleum arrived at Moooi as a fantasy. Bertjan Pot wished to light many LED-lights at the same time and experiment with bundles of electricity wires, shaped into a branch structure.

During the development of the design it just seemed too much soldering was required. Then Marcel Wanders had the 'luminous' idea to use his *Electrosandwich*® technology to make the design possible. The structure was coated with a plastic layer for isolation and on top of that a conductive layer to supply the LEDs with power.

Using this technique it was possible to create a structure more slender than hoped for when Bertjan started the project. The technique and design are perfect for each other. *Heracleum* is included in the collection of the *Stedelijk Museum Amsterdam*.



Left: Biophillia Slate Broadloom by KIT
MILES for MOOOI CARPETS Right: Delft
Blue No. 07 by MARCEL WANDERS





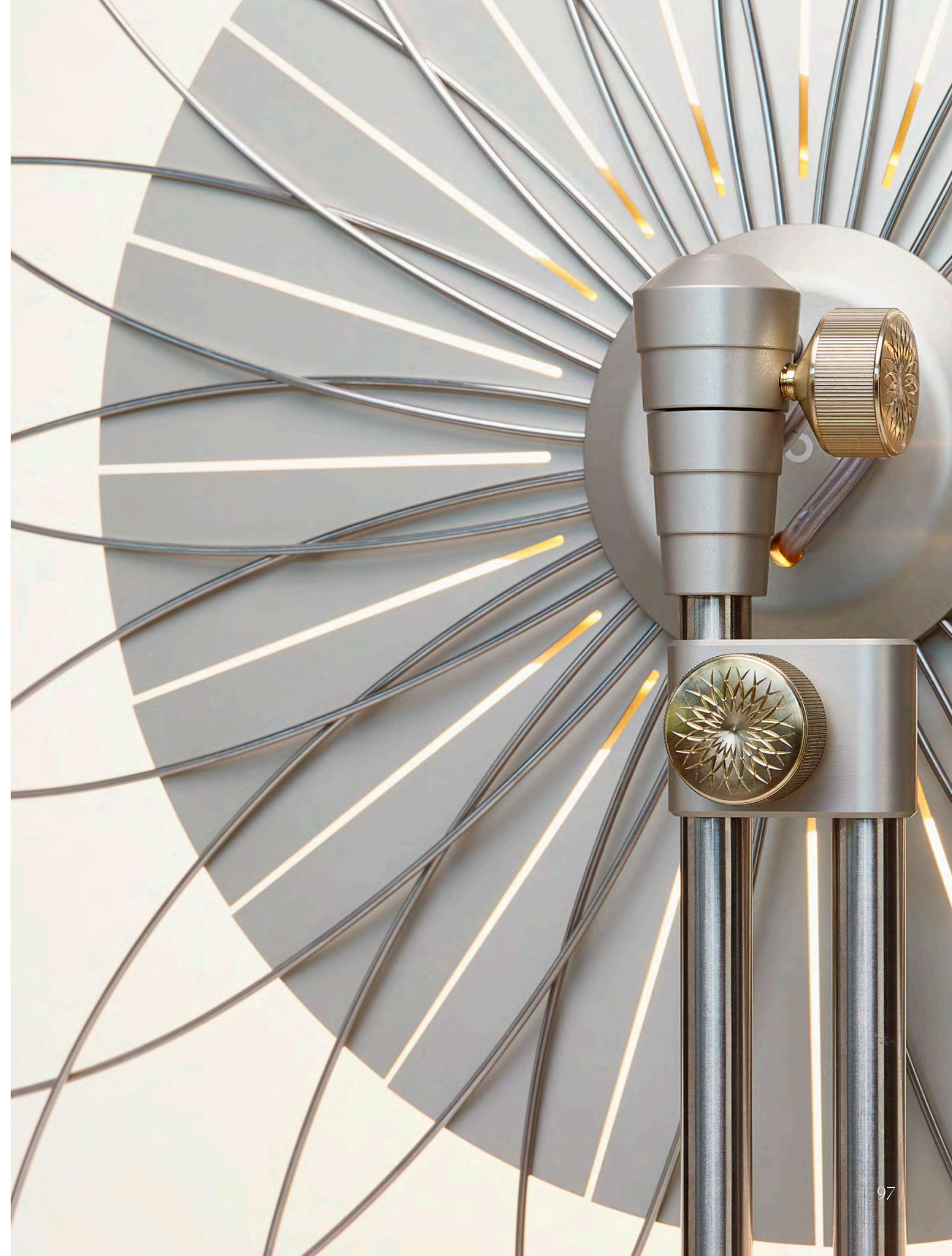
Left: Amami Pouf S, M & L by LORENZA BOZZOLI in light and dark grey upholstery, Bell Lamp by MARCEL WANDERS in transparent with gold bow, Biophillia Slate Broadloom by KIT MILES for MOOOI CARPETS, Paper Cupboard Patchwork by STUDIO JOB Right: Bell Lamp by MARCEL WANDERS in white with gold bow



bell



FILIGREE FLOOR LAMP
BY RICK TEGELAAR





Left: Pomander Slate Broadloom by TRICIA
GUILD for MOOOI CARPETS Right:
Raimond Tensegrity R61 & R89 by
RAIMOND PUTS realisation by Ox-ID



Pomander Slate Broadloom by TRICIA
GUILD for MOOOI CARPETS, Raimond
R43, R61, R89 & Raimond Tensegrity
R61, R89 by RAIMOND PUTS realisation
by Ox-ID, Valentine Table Lamp by
MARCEL WANDERS in chrome



Valentine Table Lamp by
MARCEL WANDERS in gold



Raimond

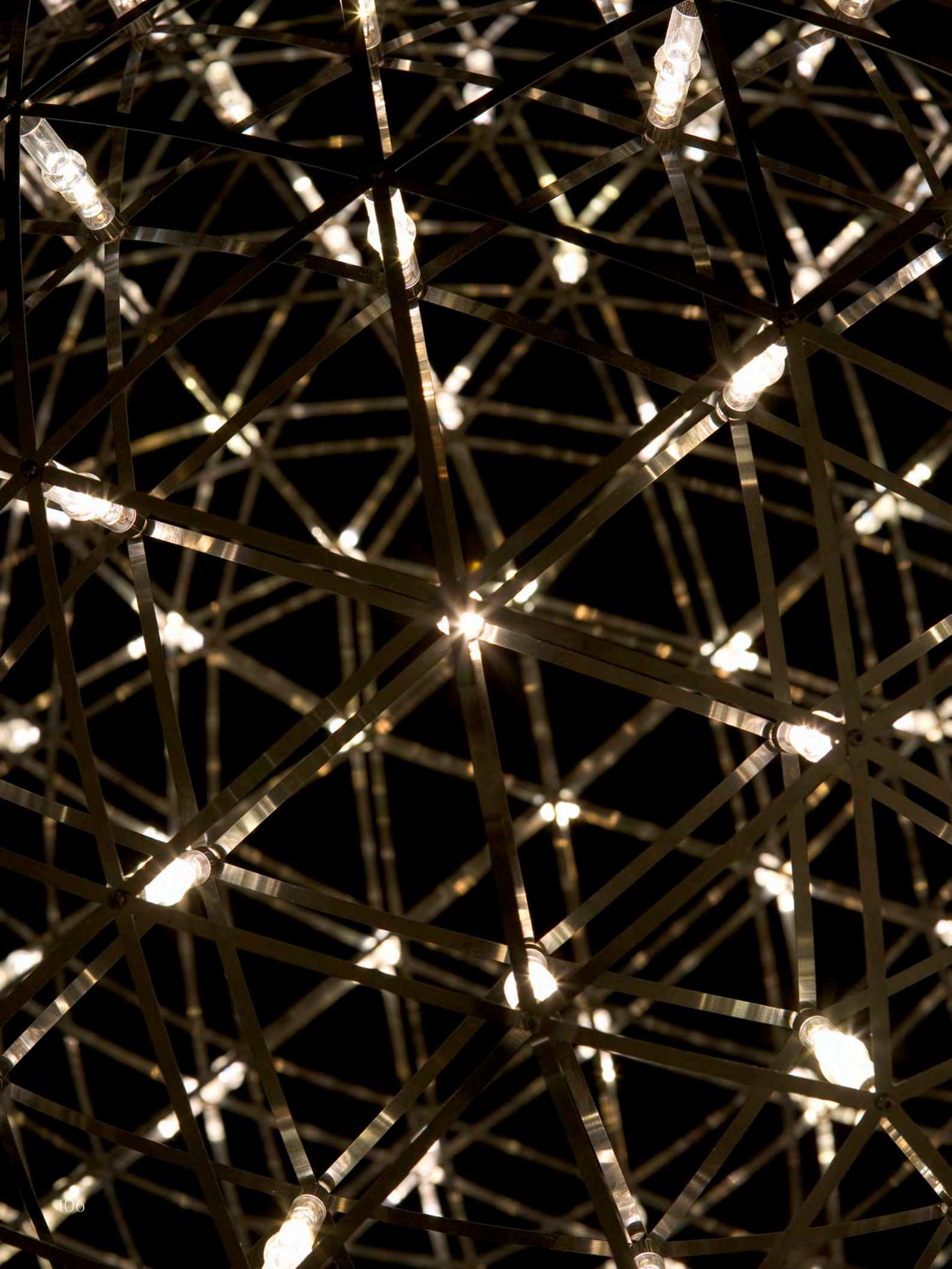
*Based on the pure beauty
of mathematics.*

The *Raimond* lamp is a mathematical marvel of perfectly measured stainless steel triangles. The twinkling LED lights themselves carry the charge in an extensive parallel circuit. Looking at the *Raimond* feels like staring into the soft glow of a starlit night. Into the essence.

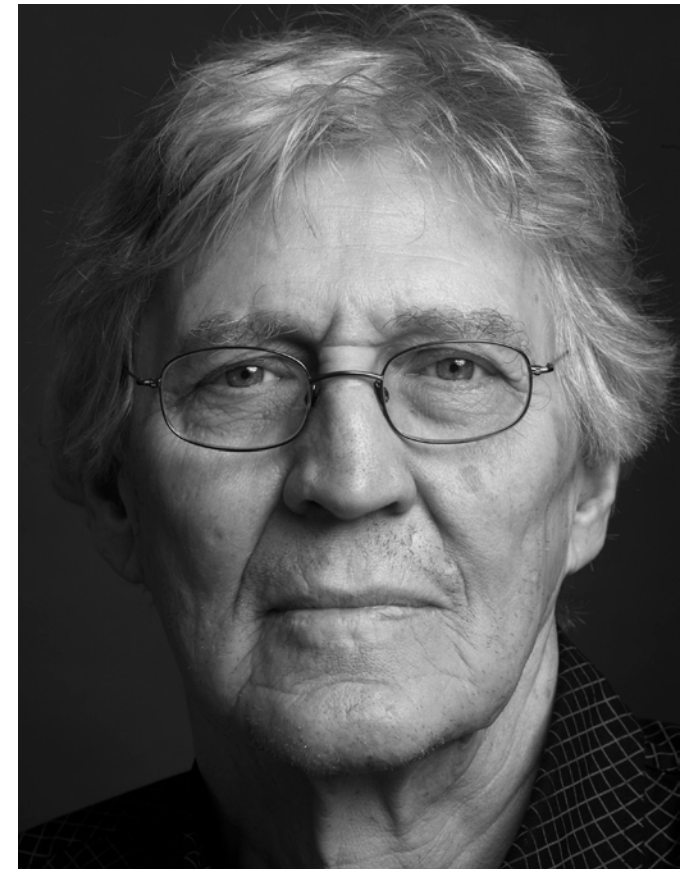
Design by Raimond Puts
Realisation by Ox-ID



*The Raimond lamp is a mathematical marvel of perfectly measured triangles.
The twinkling LED lights themselves carry the charge in an extensive parallel circuit.*



Raimond



RAIMOND PUTS

The *Raimond* lamp is based on the pure beauty of mathematics. Its creator, *Raimond Puts*, has been busy developing the concept of this extraordinary lamp for great part of his life.

It all started with the discovery of the geometric shape of a football that brought him to consider round shapes formed by triangles. Hundreds of stainless steel strips intersect creating triangles that converge into a perfectly round globe. The poetry of a sphere composed of straight lines.

His love for the absolute and fundamental sciences inspired questions that tickled him for years, until the *Raimond* lamp as we know it was finalized and became part of the Moooi collection in 2009. Authentic and extremely complex at the same time. The *Raimond* lamp: a perfect sphere of mathematical ingredients punctuated by tiny LED lights. Looking at the lamp feels like staring into the soft glow of a starry night. Into the essence.

WOOD



WOOD BY MARCEL WANDERS



Bell Lamp S by MARCEL WANDERS in smoke with white bow, Love Chair by MARCEL WANDERS in Trickle Slate upholstery with white wash stained oak legs, Pomander Slate Broadloom by TRICIA GUILD for MOOOI CARPETS, Wood by MARCEL WANDERS in black



Fall head over heels for the Love Chair's inviting curves and cosy upholstered seat available in a wide range of beautiful textiles and stained oak finishes.

LOVE CHAIR BY MARCEL WANDERS
in Summit Twill/Uni Grey composition upholstery
with natural oil stained oak legs



‘Design should be self explanatory. One thing is for sure: emotion is definitely the most important key to a successful product.’

Brave New World Lamp XL by
FRESHWEST, Elements 007 by JAIME
HAYON in grey blue RAL 5008, Love
Sofa High Back by MARCEL WANDERS
in Summit/Twill Melange Dust upholstery
with white wash stained oak legs,
Malmaison Aquamarine Rug by MAISON
CHRISTIAN LACROIX for MOOOI
CARPETS, Oblique S by MARCEL
WANDERS in oyster white RAL 1013



The cosy, soft and rounded shapes of the Love Sofa are available in several textile options, including the designers' tailor made signature textile Plush. One of the sofas has a higher backrest because, as we know, love comes in all shapes & forms.

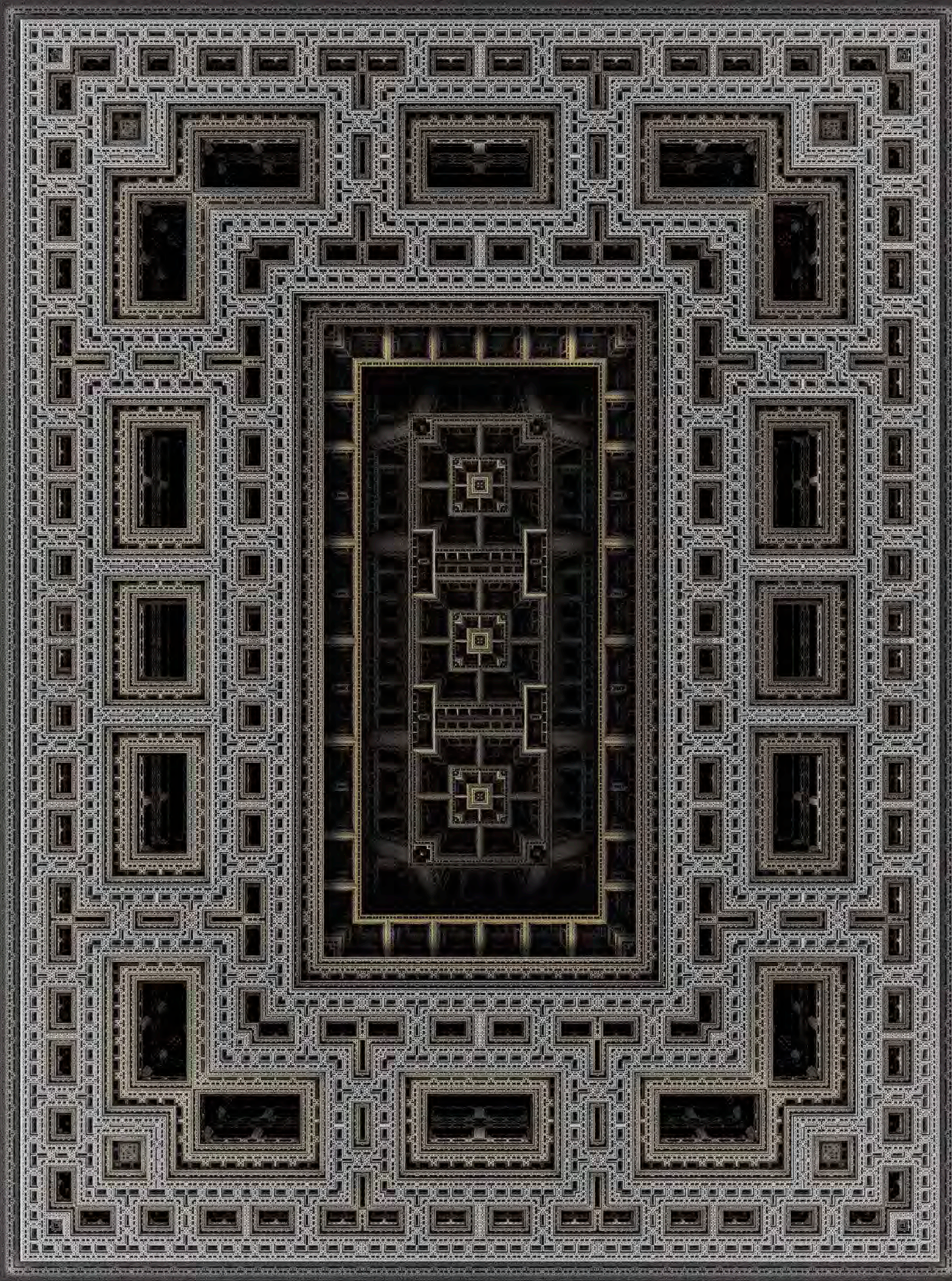
LOVE SOFA BY MARCEL WANDERS
in Liscio Perla upholstery with white wash stained oak legs



Liscio is a distinguishing, high quality woolen fabric, which is available in a variety of different colours. Manufactured with exceptional attention and commitment in the heart of Italy and due to several quality control phases Liscio reaches a higher quality level, both on an aesthetic and technical level.

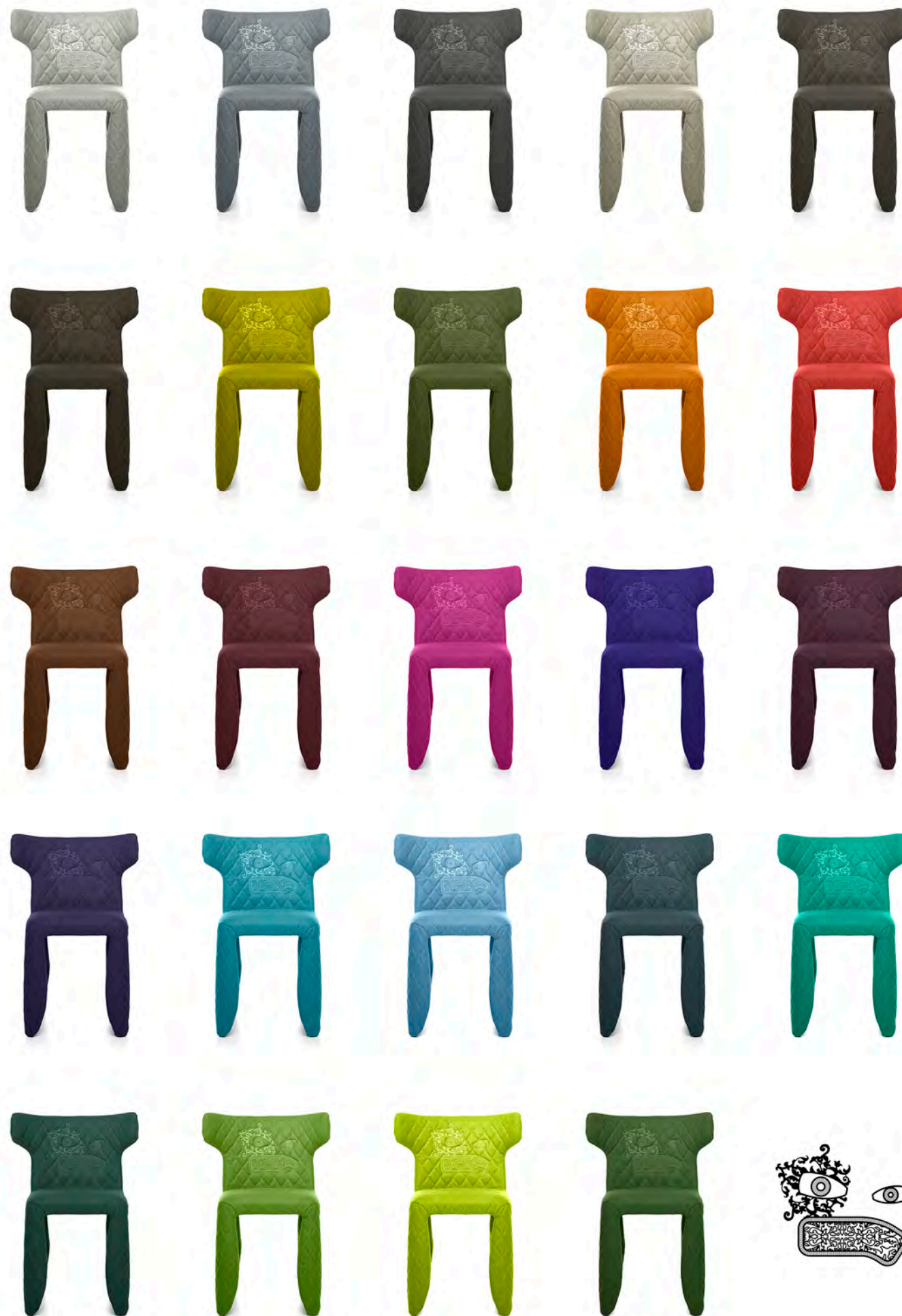


DELFT BLUE NO. 01 & 03
BY MARCEL WANDERS



Left: S.F.M. #077 Rug by MARCEL WANDERS
Right: Monster Armchair by MARCEL WANDERS in Divina Melange 120 upholstery, Valentine Table Lamp by MARCEL WANDERS in gold





One day I will die, I foresee a dramatic ending with some fireworks, some pain and lots of wild music. But after that... it will be silent... silent for a long while...



I will be sitting on a little stool at the head of a large table, ready for an eternal dinner. Seven dark leather chairs with ferocious faces surround the table. Eight sets of silver cutlery and white porcelain plates lay amongst copious amounts white tulips on a fresh white tablecloth with white ribbons. There will be sparkling crystal glasses ready to be filled with endless amounts of superb wine. Candles will be burning as *Callas* and *Puccini* sit in the corner singing heavenly tunes and I will wait for my guests. I will await my seven muses. I will await the seven most important women in my life to dine eternally in their gathered presence. All the beauty I discovered and hoped to have in my life will suddenly be there for me eternally.

My muses are the true collection of my life. I collect them as if they are butterflies. Throughout my life, my net flies gracefully through the air as I want to catch them without hurting them. I want to treat them with kindness, caution, and respect. I will never pin a butterfly down to keep her from flying. Therefore, I know I am not able to keep them only for myself. However important this collection is to me, I know that with my inevitable death I will lose not only my life but also my collection of muses.

At that table, after my death, I will wait patiently until my muses fly back to me, to my table for this eternal treat. I will look forward with excitement and hope that they might choose to be with me again. I will hope that I was able to have given them enough respect, love, laughs and sparkling eyes. I will hope that with time they can forgive my stupidity, disloyalty and little lies. I will hope that I fed them enough flowers and sunshine, poetry

and fantasies for them to desire a seat at my festive table. I will enjoy the eternal pleasure of being reunited with my muses.

Each muse will find a black leather embroidered chair that is just for her: Her solitaire, soft and comfortable, follows the rules of a future contemporary style while conflicting with the rationales of history. Showing the frozen face of a monster, a dragon, seemingly harmless. Only when all seven muses are seated

will the party begin. There will never be an end to this orgy of sensibility and passion. We will laugh, we will tease, we will play and we will cry. We will feel connected on the deepest level of our souls. Wine will not give us headaches, sweets will not make us fat, the cheese will scent like perfume, for always, forever...

The greater the excitement of being reunited with my collection of muses the crueller and more painful the moment if not all my seven muses will arrive at my table. One of them could decide to stay away, not to join, one of them could turn her back to me.

In this unfortunate event, this dark occasion, this moment of eternal sorrow, I will understand why I deserve my muses' disloyalty. The frozen monster in the free leather chair will come alive. It will step onto the table and reveal its fierce claws. It will spit fire while its black leather skin will turn crimson like fire. From the chest of the monster will spring long sharp needles. With one swift move, he will pierce all my loyal muses. I will stay alone at my table, the wine will bloat my skull, sweets will make me obese, the stench of the cheese will want me cut off my nose, for always, forever... BY MARCEL WANDERS

Bassotti Coffee Table by MARCEL
WANDERS in White Carrara marble
with long legs, Filigree Floor Lamp by
RICK TEGELAAR, Random Light L by
BERTJAN POT in white, Vancouver
Rug by NEAL PETERSON for MOOOI
CARPETS, Zliq Island by MARCEL
WANDERS in Trickle Flour upholstery



The Random Light transmits a feeling of simplicity, softness and lightness. A resin drained yarn is randomly coiled around a big balloon, creating a translucent 3D fabric. In the end, the skin becomes the product, soft and magical.

RANDOM LIGHT BY BERTJAN POT
in white



The Valentine lamp by Marcel Wanders, a magic mirror and the power of crystals transform a simple shell into an endless light bouquet of flowers.



ZLIQ SOFA BY MARCEL WANDERS
in Abbracci Brown upholstery



Mooui X Luxury Hotel Cosmetics

Imagine checking-in in a beautiful hotel room after a day in an unfamiliar city, spent between people, chaos and noise... After closing the door of your luxurious hotel room you are finally in peace, far away from home.

Mooui has always been about bringing additional beauty to our lives by decorating our homes, offices and hotel rooms with iconic and innovative pieces of furniture and lighting. Together with *Luxury Hotel Cosmetics*, we created a line of sumptuous beauty products for luxury hotels. The shampoo, conditioner, body wash and body lotion bottles (50ml) come in the shape of Mooui's extra 'O', which symbolizes an extra value in terms of beauty and uniqueness.

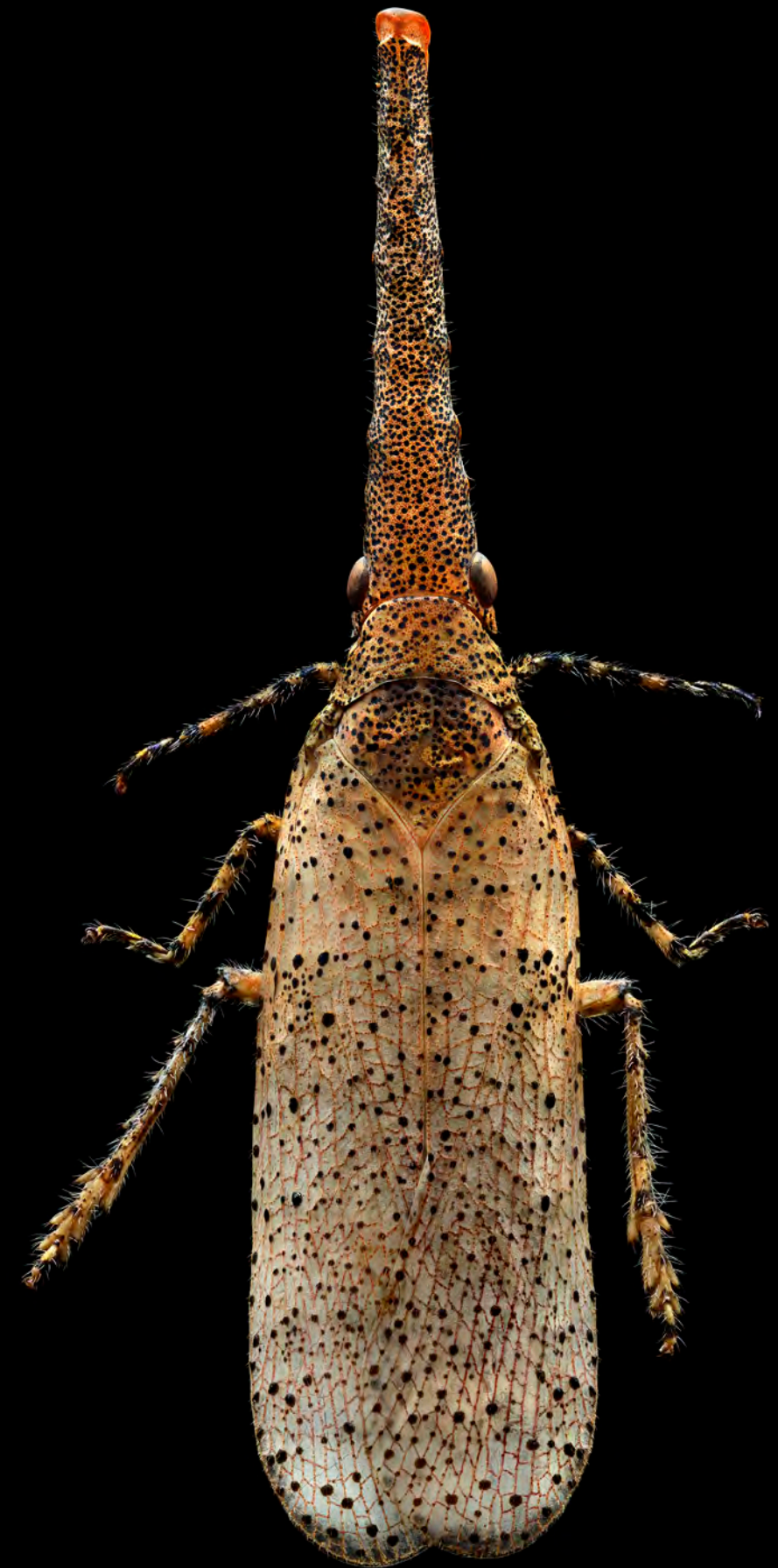
The fragrance evokes contrasting senses and is multi-faceted, characterized by the purity of its individual ingredients. A fresh blend, starting with a light top note of *bergamot*, *cardamom* and *nutmeg* lead over to a warm, aromatic-woody heart of *lavender* and *cedarwood* are perfectly complemented by a deep, elegant base note of *patchouli*, *tobacco* and *musk*.

Indulge yourself by starting your day with an extra touch of beauty!



Sitting in the warm embrace of the Nut Lounge Chair will make you feel protected and as precious as the most beautiful pearl in the sea. The exquisite flavour of its solid oak design and the rich pattern of its textiles distinguish it from the mass.

NUT LOUNGE CHAIR BY MARCEL WANDERS
in Arredo Brown leather with natural oil stained oak finish



Cervino is a chromium-tanned and fully aniline-dyed cowhide imported from Italy. It is finished with a sleek, transparent protective topcoat. Because the hides are 100% immersion-dyed in the drum and not sprayed superficially with pigments, there is a subtle variation in colour and tone throughout each hide. This polished leather has a distinguished vintage look with a marbled accent. It boasts the ability to appear antique and ageless, yet with a sturdy finish that prevents the surface from easily scratching or rubbing off. Finally, Cervino offers a drapey hand, exuding timeless luxury and buttery softness.



DELFT BLUE NO. 07 & 10
BY MARCEL WANDERS



Altdeutsche Clock by STUDIO JOB,
Blueberry Fields Woven Rug by MARCEL
WANDERS for MOOOI CARPETS, Nut
Lounge Chair & Footstool by MARCEL
WANDERS in Oray Cream upholstery
with white wash stained oak finish, Paper
Desk 180 by STUDIO JOB in white, Shift
Dining Chair by JONAS FORSMAN in
Blue/Grey, Statistocrat by ATELIER VAN
LIESHOUT in traffic yellow RAL 1023



Woody is an endearing portable wooden table resembling the shape and posture of a timid deer. Its modest dimensions allow you to easily carry it to different areas and spaces.

WOODY BY MARCEL WANDERS
in black

Carbon Chair by BERTJAN POT &
MARCEL WANDERS, Non Random 48
by BERTJAN POT in black, The Killing of
The Piggy Bank by MARCEL WANDERS



Left: Shift Lounge Chair by JONAS FORSMAN in grey/blue, Shift Dining Chair by JONAS FORSMAN in ochre
Right: Set up Shades 7 by MARCEL WANDERS, Shift Dining Chair by JONAS FORSMAN in ochre



The soft, knitted fabric of the Shift series allows these exceedingly comfortable foldable chairs to stretch and support your back.



Paper Family

*Did the idea of paper furniture
ever strike your mind?*

Paper, cardboard and papier-mâché are familiar to all of us. They bring back memories of kindergarten and our first experiences of making things. Inspired by classic icons, but manufactured like modern day furniture, this furniture collection by *Studio Job* is an ode to classical style and to the paper material.

Design by *Studio Job*



‘We position decorative arts in the twenty-first century. Is that design? Whatever. Is that art? Whatever, really.’

The robust items in the Paper family exemplify expert craftsmanship: the solid wood and cardboard is covered by hand with sheets of paper, creating a pure, subtle and unique finish.



PAPER CHANDELIER L BY STUDIO JOB
in white

Paper Family



STUDIO JOB

Paper, Paper RAL and Paper Patchwork by Studio Job are members of Moooi's renowned Paper Family, which celebrates classic forms and a material with infinite potential: paper.

Inspired by classic icons but manufactured like modern day furniture, this furniture collection is an ode to classical style and to the material.

Paper Family, with its white colour, has always expressed the pure essence of a candid sheet of paper. *Paper Patchwork* is a playful patchwork of sparkling colours combined with the purity of natural wood, like in old fashioned cars or in the patchwork quilts carefully sewed by our favourite aunt. *Paper RAL* is a preselected colour of one of our RAL colours. So enjoy mixing and matching them in any kind of interior!

Bart Sofa by MOOOI WORKS in Summit/
Twill Melange Slate upholstery, Bart Swivel
by MOOOI WORKS in Cervino Cognac
upholstery, Bell Lamp S by MARCEL
WANDERS in smoke with white bow,
Eden Queen Rug by MARCEL WANDERS
for MOOOI CARPETS, Elements 002 by
JAIME HAYON in iron grey RAL 7011,
Statistocrat Floor Lamp by ATELIER
VAN LIESHOUT in Traffic White RAL
9016, Zio Buffet by MARCEL WANDERS
in white wash stained oak finish, Zio
Coffee Table by MARCEL WANDERS
in white wash stained oak finish



Bart Sofa by MOOOI WORKS in
Summit Melange/Twill Melange Slate
upholstery, Perch Light Floor & Perch
Light Table by UMUT YAMAC

*Bart adds a soft, comforting touch to any
space with its unique design of rounded corners
and luxurious combinations of fabrics.*

Bart Family

*Bringing a touch of grandeur
to your home.*



The *Bart Family* collection of sofa's, armchairs, daybed and canapés is originally inspired by the rounded shapes and sumptuous glory of 18th century *Rococo*. *Moooi Works* reinterprets such splendor, adding genuine pleasure and softness to the classic silhouette by using modern day skills and a timeless eye for details. Enjoy rounding off your home with the friendly tenderness of the *Bart Family* components!

Design by *Moooi Works*



Bart Swivel by MOOOI WORKS
 in Cervino Cognac upholstery,
 Biophillia Slate Broadloom by KIT
 MILES for MOOOI CARPETS,
 Urbanhike by MARCEL WANDERS,
 T Lamp by MARCEL WANDERS



*Based on the concepts of movement,
 grace and energy, the T Lamp visually
 reminds us of the fluidity and light motion
 of Alexander Calder's kinetic mobiles.*

T LAMP BY MARCEL WANDERS



The playful design of the Turbo Tables has stunning finishing touches of cast bronze legs and wheels.

TURBO TABLE HIGH BY MAARTEN BAAS



TURBO

Biophillia Dark Broadloom by KIT MILES
for MOOOI CARPETS, NR2 M by
BERTJAN POT in white, Zio Coffee Table
by MARCEL WANDERS in cinnamon/white
wash composition stained oak finish, Zio
Lounge Chair & Footstool by MARCEL
WANDERS in Grigio Blu upholstery
with cinnamon/white wash composition
stained oak finish, Zliq Sofa by MARCEL
WANDERS in Jacquard Andaz upholstery



NR2

*An elegant, bright
lighthearted bubble.*



Inspired by the beauty and success of the *Non Random* lamp, *Bertjan Pot* has rediscovered the ingeniously structured web and wrapped it tightly around a completely different light. The fiberglass threads are finer while the shape of the lamp more elongated and symmetric, forming a harmonious bubble of glossy light which elegantly hangs from the ceiling or proudly poses on its base. A LED lamp blends into the sphere, generating a broad light which radiates a warm atmosphere all around.

Design by *Bertjan Pot*

Egg Vase by MARCEL WANDERS
NR2 M by BERTJAN POT in white





Left: Biophilia Blue/Black Broadloom
by KIT MILES for MOOOI CARPETS
Right: Construction Lamp M by JOOST
VAN BLEISWIJK in black, Container
Stool New Antiques by MARCEL
WANDERS in black, Wood by MARCEL
WANDERS in black stained oak finish





Lean back, close your eyes, relax your arms on the smooth armrests and grant yourself the time to drift away to a place of your imagination, beyond your surroundings, into the street, beyond the starry night. Living your fantasies is easy while cosily sitting in the solid softness of Zio Lounge Chair!

ZIO LOUNGE CHAIR BY MARCEL WANDERS
in Oray Ochre upholstery with Grey stained oak finish



Moooi Carpets

Moooi Carpets reinvents the carpet and opens up new horizons by introducing a technology that generates extremely high definition prints, which can even result in photo realistic flooring solutions. All rugs combine an endless mix of colours thanks to the use of a groundbreaking high definition *Chromojet* printer and its accurate tones, which generate a playful illusion of depth. The collection counts on a broad variety of possibilities, being composed by three different families: *Signatures*, *Moooi Works* and *Your Own Design*.

Each family group offers a number of different solutions to meet the many demands of projects and individual taste. Create *Your Own Design* rug, retouch a *Moooi Works* rug with 648 different colours or buy your favourite *Signature* rug or broadloom. *Moooi Carpets* has it all. It's the reinvention of the carpet!

Moooi Carpets takes the next step by offering even more luxurious carpets in a new ancient and natural fibre: *wool*. This ancient material has wonderful qualities that put it at the top of luxury for those that who are worthy.



Left: Dear Ingo by RON GILAD in black, Fool's Garden rug by MARCEL WANDERS for MOOOI CARPETS, Power Nap by MARCEL WANDERS in Trickle Chili upholstery
Right: Heavens Gate Woven Rug by MARCEL WANDERS for MOOOI CARPETS



Moooli Carpets presents 'jacquard' woven rugs by Marcel Wanders with sophisticated details and 3D effects woven into the carpet.

Coppélia

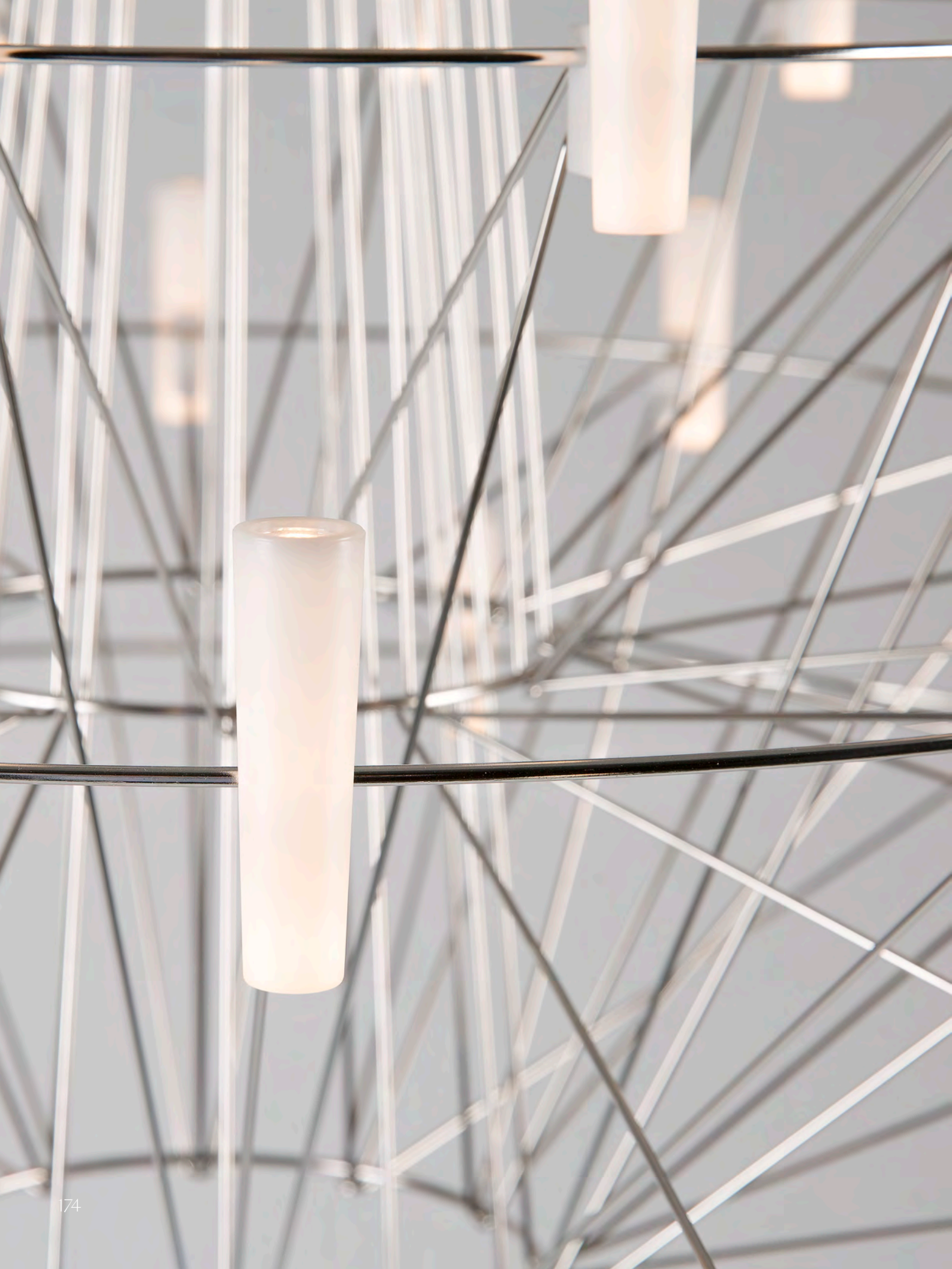
*A beautiful mechanical doll appears
to come to magically come to life in
the famous ballet Coppélia.*

A three-dimensionally crossed structure of stainless steel wires leads the spectator to dozens of glowing LED lights, which define the contour and the magical glow of this new interpretation of a classic chandelier. *Coppélia* comes to life in a whirl of flowing motion and sparkling light.

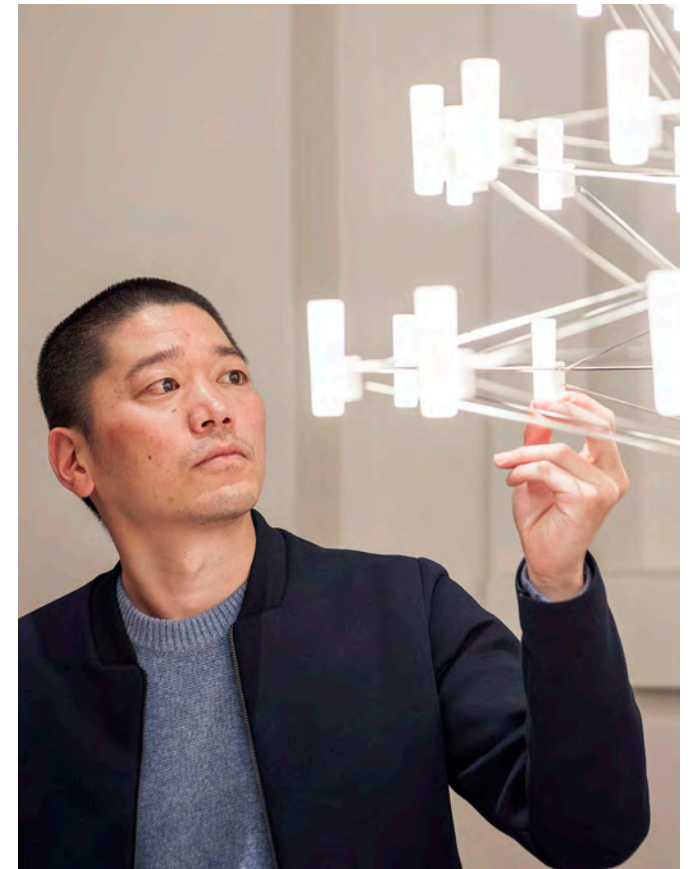
Design by Arihiro Miyake

Left: S.F.M. 78 Broadloom by MARCEL
WANDERS in Multicolour
Right: Charles Chair by MARCEL
WANDERS in Bouclé Brown upholstery,
Coppélia by ARIHIRO MIYAKE





Coppélia



ARIHIRO MIYAKE

Miyake's *Coppélia* light is a three-tiered wire-frame chandelier. It comprises a polished stainless-steel frame, which supports 54 LED lights housed in polycarbonate tubes.

The lights on the chandelier are powered by a low voltage current that runs through the metal frame without the need for any additional wires. Miyake says this approach would not have been possible with traditional incandescent bulbs, which require a much higher voltage. "I wanted to create a lamp that you can only create with LEDs," *Miyake* explains. "Each LED is connected by two wires – one is positive and one is negative – and these wires create the structure and the shape of the lamp itself."

While *Coppélia* makes use of the benefits of modern LED technology, *Miyake* says he wanted to reference a traditional chandelier with the form of the lamp. "I believe there should be some communication in design," he explains. "Even if it is technical, it should be translated to the language that most people can understand and appreciate."

Miyake chose to taper the polycarbonate tubes housing the LEDs, rather than making them perfect cylinders, to reference the shape of wax candles. "Each LED tapers upwards, which reminds me of these old types of candles," he says. "The middle cone has the taper as well, repeating the detail of the LED pieces."

Container Table Bodhi by MARCEL
WANDERS in natural oil stained oak
finish and wooden table top, Coppélia by
ARIHIRO MIYAKE, Love Chair by MARCEL
WANDERS in Summit/Twill Melange Dust
upholstery with natural oil stained oak legs



Boutique Horizons by MARCEL
WANDERS, Cocktail Chair by MARCEL
WANDERS in Liscio Perla upholstery with
white wash stained oak legs, Egg Vase by
MARCEL WANDERS, Paper Buffet by
STUDIO JOB in white, Statistocrate Floor
Lamp by ATELIER VAN LIESHOUT in traffic
white RAL 9016, Utopian Fairy Tales Ice Rug
by NOORTJE VAN EEKELLEN, Zio Coffee
Table by MARCEL WANDERS in cinnamon/
white wash composition stained oak finish





BOUTIQUE BOTERO BY MARCEL WANDERS

‘I have to cross new borders, try new things and discover new possibilities. I will not lean back on a certain technique or a certain way of working.’

Canal Chair

*Mainly docked around a table in
the manner of a moored boat.*



Inspired by a historical ship that dominated the Mediterranean waterways for centuries, the *Canal Chair* resembles the bow of a boat and displays striking compositions of matching or contrasting textiles.

Design by *Luca Nichetto*





*Marcel Wanders embraces his Dutch roots
with the Delft Blue series – each hand painted
at 'Royal Delft', the original producer of
the traditional Delft Blue ceramics.*



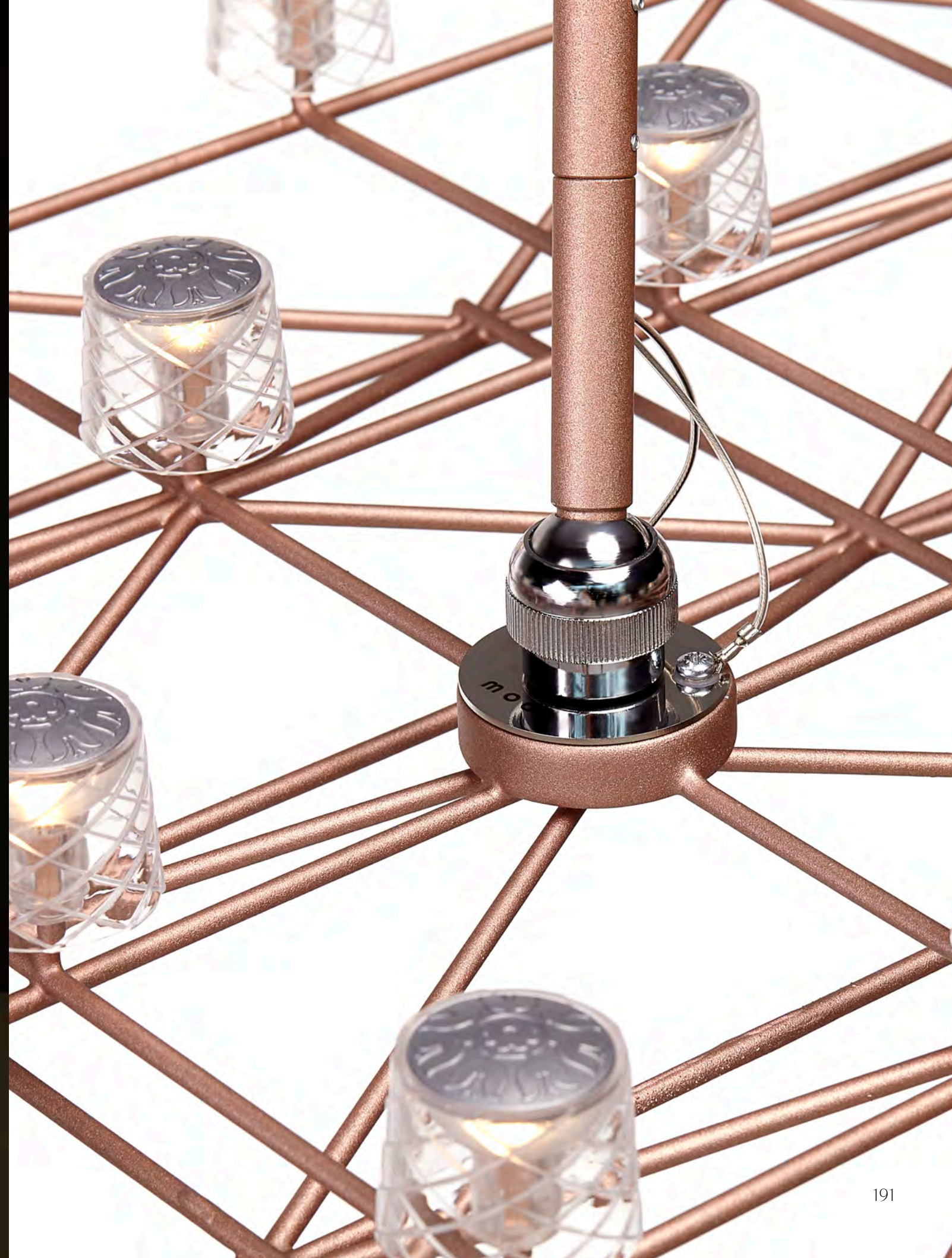
lolita

LOLITA TABLE LAMP BY NIKA ZUPANC

Right: Lolita by NIKA ZUPANC in london rosé, Paper Cabinet by STUDIO JOB in white, Zio Dining Chair by MARCEL WANDERS in Liscio Perla upholstery with grey stained oak finish, Zio Dining Table by MARCEL WANDERS with grey stained oak finish



Left: Canvas Sofa by MARCEL WANDERS
in Jacquard Old Blue upholstery, Space-
Frame by MARCEL WANDERS in
nickel and copper Right: Space-Frame
by MARCEL WANDERS in copper



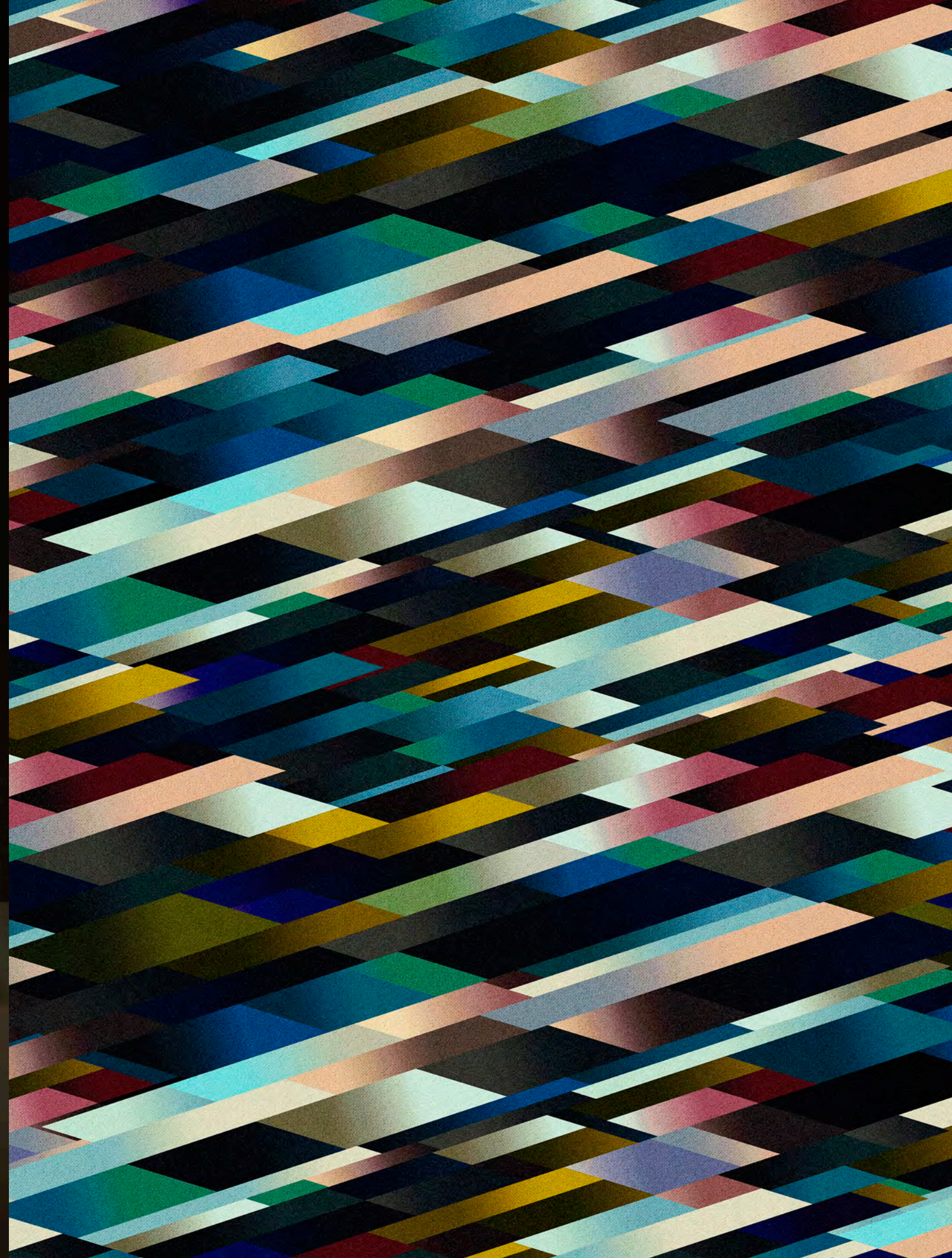


Left: Chess Table by FRONT,
Kubrick Broadloom by KIT MILES
for MOOOI CARPETS, Paper Wall
Lamp by STUDIO JOB in white
Right: Paper Wall Lamp by
STUDIO JOB in white



PAPER WALL LAMP

Left: Bottoni Shelf by MARCEL
WANDERS in Liscio Perla upholstery,
Statistocrat Floor Lamp by ATELIER VAN
LIESHOUT in traffic white RAL 9016
Right: Kubrick Broadloom by KIT
MILES for MOOOI CARPETS



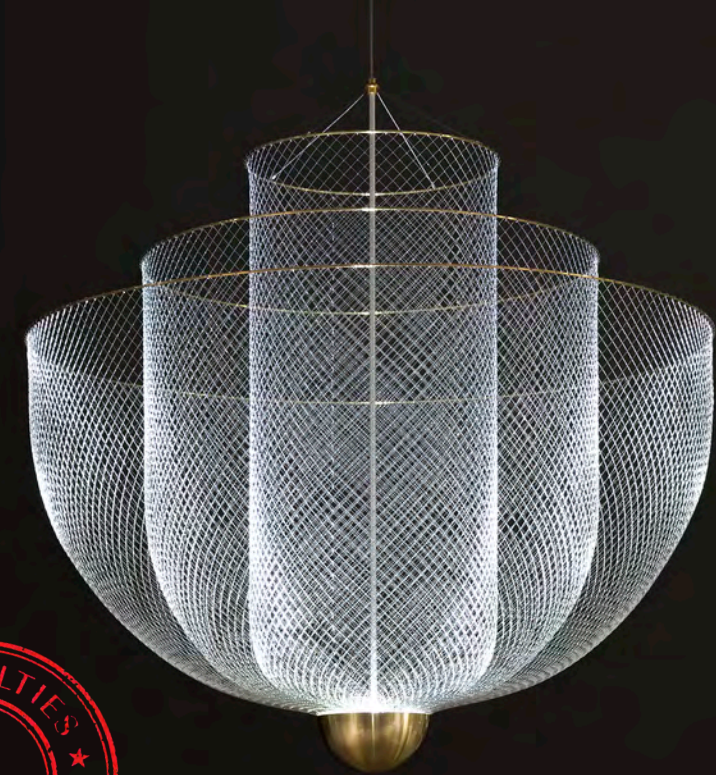
Meshmatics Chandelier

*Reveals the full potential
of wire netting.*

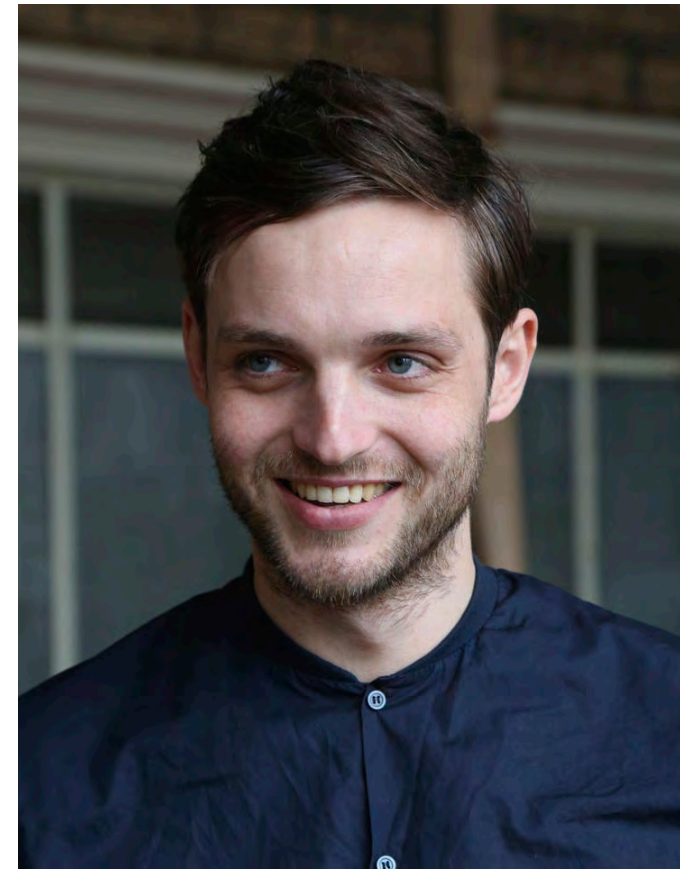
The *Meshmatics Chandelier* transforms humble wire netting into a designer masterpiece. The thin and flexible material has been stretched and formed into three layers of beauty that reflect and diffuse the LED light with poetic grace.

Design by *Rick Tegelaar*

Container Table Bodhi by
MARCEL WANDERS in
natural oil stained oak finish
and wooden table top, Love
Chair by MARCEL WANDERS
in Liscio Latte upholstery
with natural oil stained oak
legs, Meshmatics Chandelier
by RICK TEGELAAR



Meshmatics Chandelier



RICK TEGELAAR

Undervalued materials such as wire mesh and waste wood has Rick's special interest. By re-examining these materials, new applications of the materials arise. The challenge lies in finding new forms, qualities and aesthetics as opposed to those with which we are all too familiar.

Rick Tegelaar developed a machine and a set of tools that enable him to form wire very controlled and accurately. By stretching the material over a mold it shrinks itself to the form and takes its shape. The tension that comes into the material from stretching stays captured to form a very efficient structure. The material is now shown with a complete new perspective with new possibilities.

The wire mesh acts as a reflector to distribute the light from the integrated LED in an elegant way. This results in changing transparencies due to the different tiers of the chandelier. In this way the light is captured to form a very visual yet transparent display.



The precious flavor of the Nut Dining Chair's design and the rich pattern of its textiles distinguish it from the mass.

NUT DINING CHAIR BY MARCEL WANDERS
in Oray Cream upholstery with
Cinnamon stained oak finish



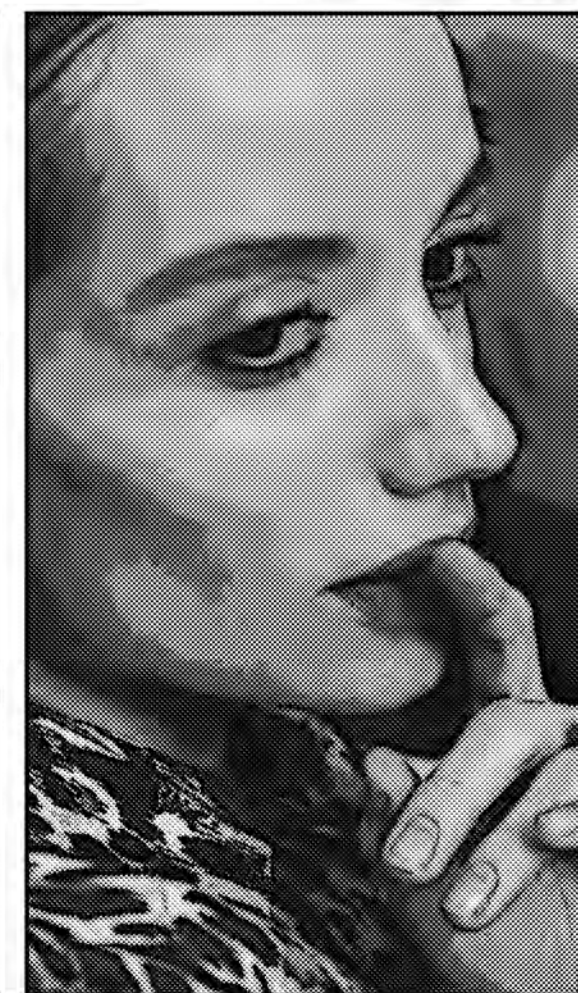
Diamond Tree Rug by EDWARD VAN
VLIET for MOOOI CARPETS, Elements
002 by JAIME HAYON in Silk Grey RAL
7044, Nut Lounge Chair by MARCEL
WANDERS in Oray Griffin upholstery
with White Wash stained oak finish,
Urbanike by MARCEL WANDERS,
Zio Buffet by MARCEL WANDERS
in White Wash stained oak finish



A GROUP OF FRIENDS CELEBRATES
THEIR FRIENDSHIP BY CELEBRATING
VALENTINE TOGETHER ...



AFTER DINNER SOMEONE
LEAVES A LETTER UNDER
VERONICA'S PLATE ...

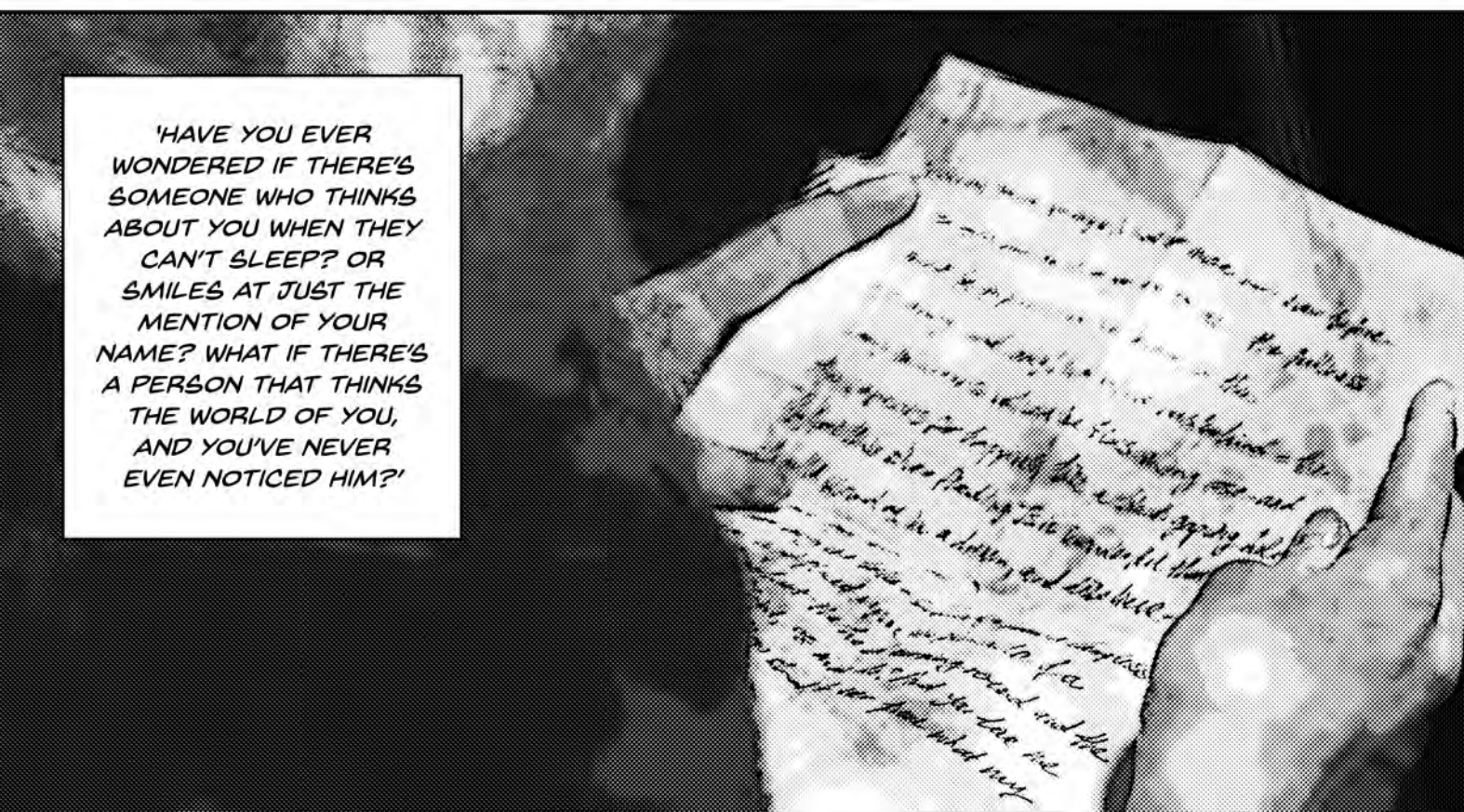




VERONICA DID FIND THE LETTER AND IS REALLY TOUCHED ...



MMMMMM...



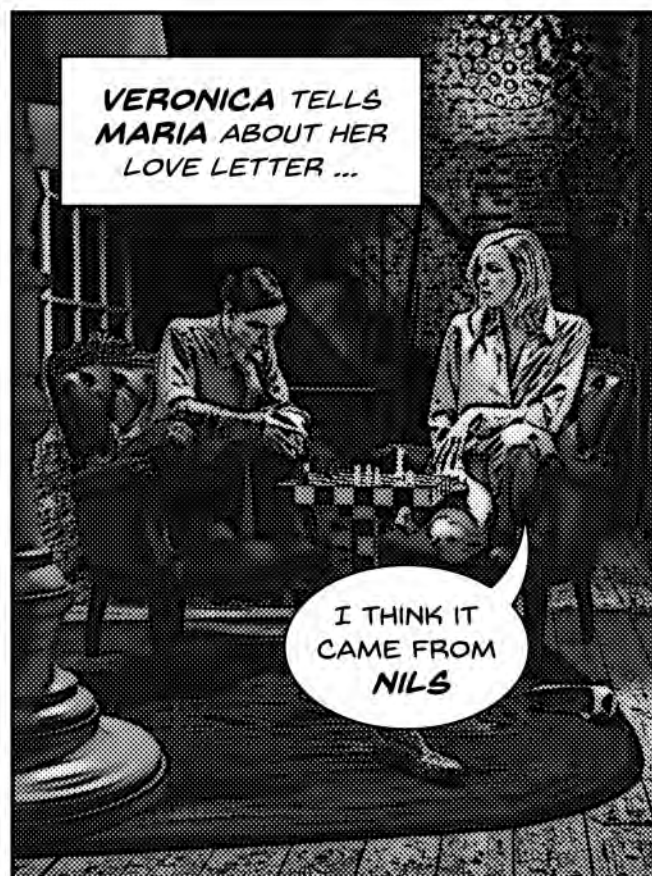
'HAVE YOU EVER WONDERED IF THERE'S SOMEONE WHO THINKS ABOUT YOU WHEN THEY CAN'T SLEEP? OR SMILES AT JUST THE MENTION OF YOUR NAME? WHAT IF THERE'S A PERSON THAT THINKS THE WORLD OF YOU, AND YOU'VE NEVER EVEN NOTICED HIM?'

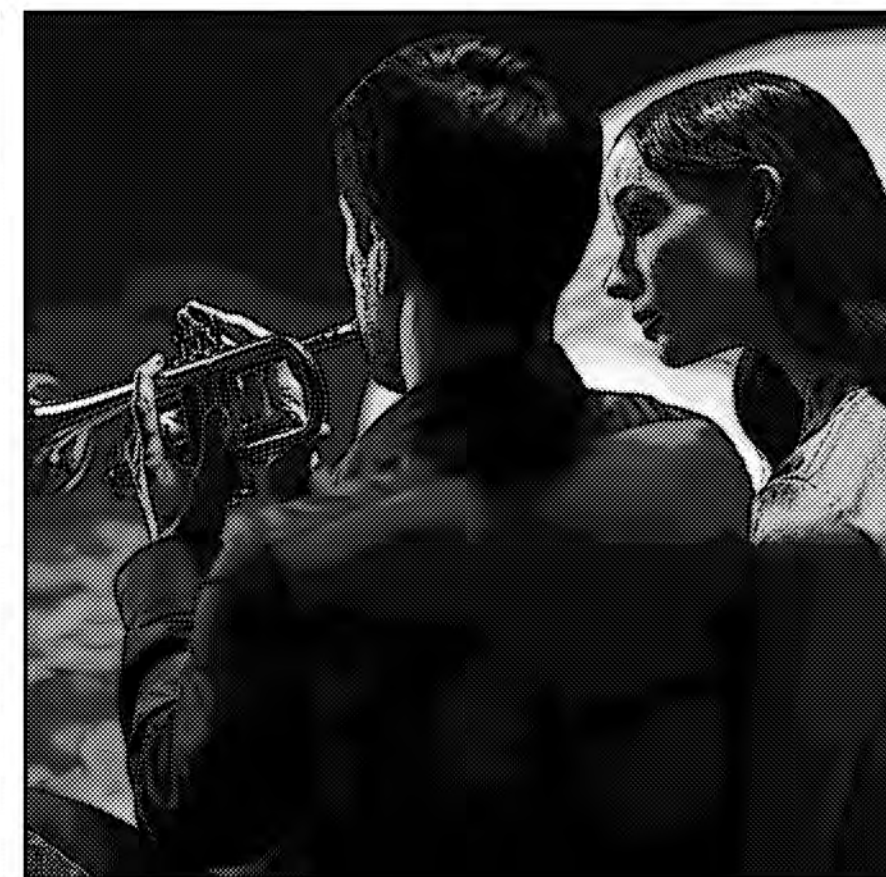
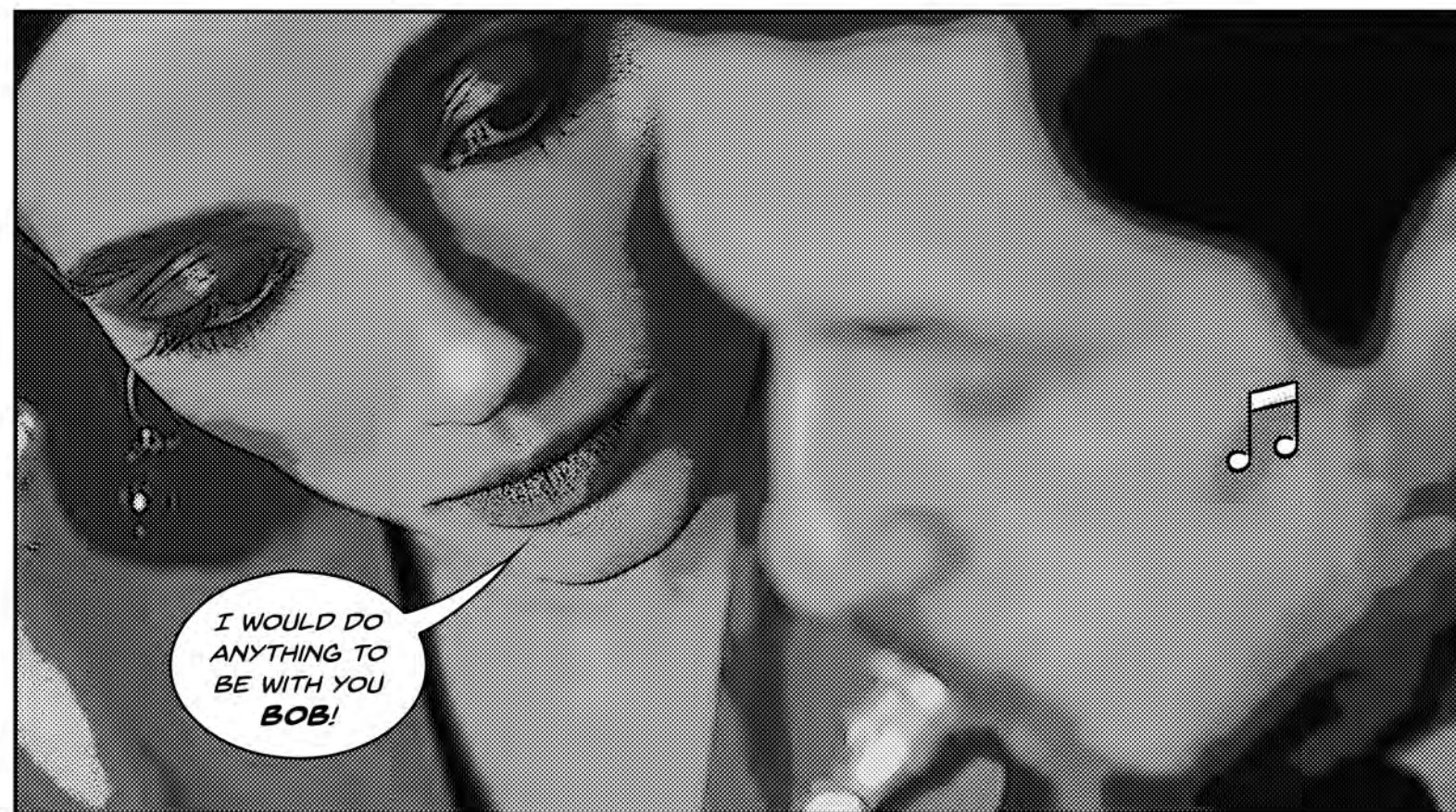
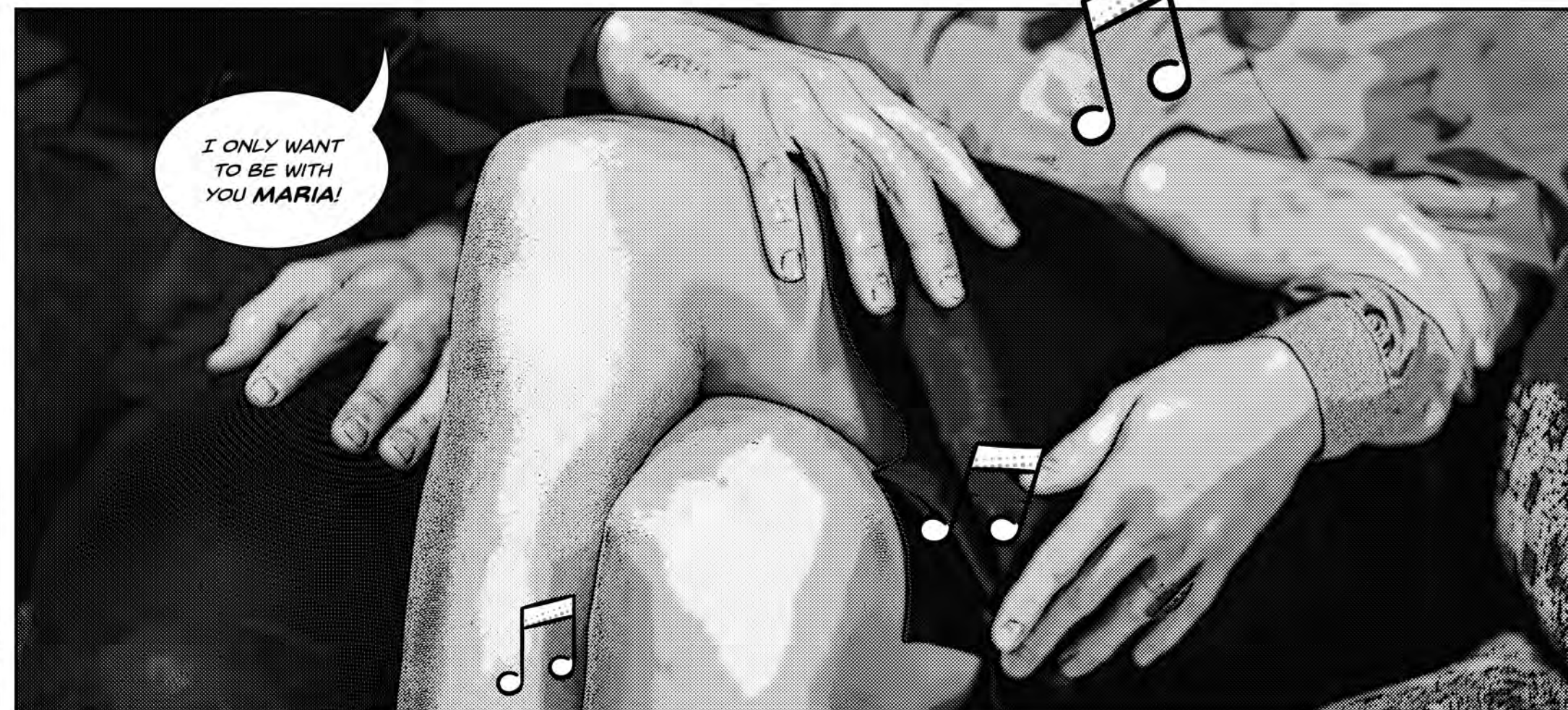


VERONICA THOUGHT ABOUT HER VALENTINE ALL NIGHT!

... IT MUST BE NILS?

...COULD IT BE?





Lighting



Bell Lamp

P. 81/95



Bell Lamp S

P. 94/109/150



Brave New World Lamp



Brave New World Lamp XL

P. 115



Clusterlamp

P. 41



Construction Lamp S



Construction Lamp M

P. 20/27/165



Construction Lamp L

P. 20/27

Heracleum
The Big OHeracleum
The Small Big O

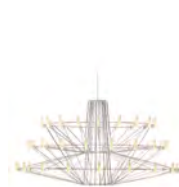
P. 80



Horse Lamp

Juuyo
Cherry BlossomConstruction Lamp
Suspended M

P. 28

Construction Lamp
Suspended L

Coppélia

P. 173/174/177



Coppélia S

Juuyo
Koi Carp Tattoo

Light Shade Shade Ø47



Light Shade Shade Ø70



Light Shade Shade Ø95



Dandelion

Dandelion
Floor Lamp

Dear Ingo

P. 170



Double Shade



Lolita

P. 189

Lolita
Table Lamp

P. 188



Long Light



Oval Light



Emperor S

P. 36/38/39



Emperor M

P. 36/38/39



Emperor L

P. 36/38/39

Emperor
Table LampMeshmatics
Chandelier

P. 197/198



Non Random 71



Non Random 48

P. 57/140/141



NR2 M

P. 6/160/162



Farooo S



Farooo M



Farooo L

Filigree
Floor Lamp

P. 80/124



Hang



Heracleum



Heracleum S

P. 89/90

Heracleum
EndlessHeracleum
The Big OHeracleum
The Small Big O

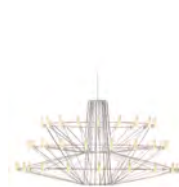
P. 80



Horse Lamp

Juuyo
Cherry BlossomConstruction Lamp
Suspended M

P. 28

Construction Lamp
Suspended L

Coppélia

P. 173/174/177



Coppélia S

Juuyo
Koi Carp Tattoo

Light Shade Shade Ø47



Light Shade Shade Ø70



Light Shade Shade Ø95



Dandelion

Dandelion
Floor Lamp

Dear Ingo

P. 170



Double Shade



Lolita

P. 189

Lolita
Table Lamp

P. 188



Long Light



Oval Light



Emperor S

P. 36/38/39



Emperor M

P. 36/38/39



Emperor L

P. 36/38/39

Emperor
Table LampMeshmatics
Chandelier

P. 197/198



Non Random 71



Non Random 48

P. 57/140/141



NR2 M

P. 6/160/162

Index



Paper
Chandelier L
P. 145/148



Paper
Chandelier XL
P. 145



Paper
Floor Lamp
P. 145



Paper
Table Lamp
P. 146



Paper
Wall Lamp
P. 138/193/200



Perch Light
Branch
P. 20/22/33



Perch Light
Floor
P. 80/152



Perch Light
Table
P. 152



Perch Light
Tree



Perch Light
Wall



Perch Light
Wall S



Perch Light
Wall Recessed
P. 32



Perch Light
Wall Recessed S



Prop Light
Single



Prop Light
Double



Prop Light
Double Horizontal



Prop Light
Double Vertical



Prop Light
Floor



Prop Light
Wall



Prop Light Round
Single



Prop Light Round
Double



Prop Light Round
Double Vertical
P. 71



Prop Light Round
Floor
P. 69

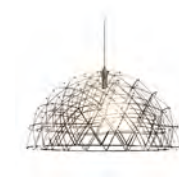


Prop Light Round
Wall
P. 72

Index



Rabbit Lamp



Raimond
Dome 79



Raimond
R43
P. 100



Raimond
R61
P. 100/105/106



Raimond
R89
P. 100



Raimond
R127



Raimond
R163



Raimond
R199



Raimond
Zafu



Raimond
Tensegrity R61
P. 99



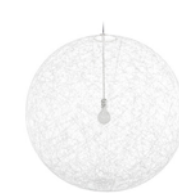
Raimond
Tensegrity R89
P. 93



Random Light S



Random Light M
P. 52/125



Random Light L
P. 124



Random Light
Floor Lamp S



Random Light
Floor Lamp M



Round Boon



Square Boon



Round Light



Square Light



Salago S



Salago M

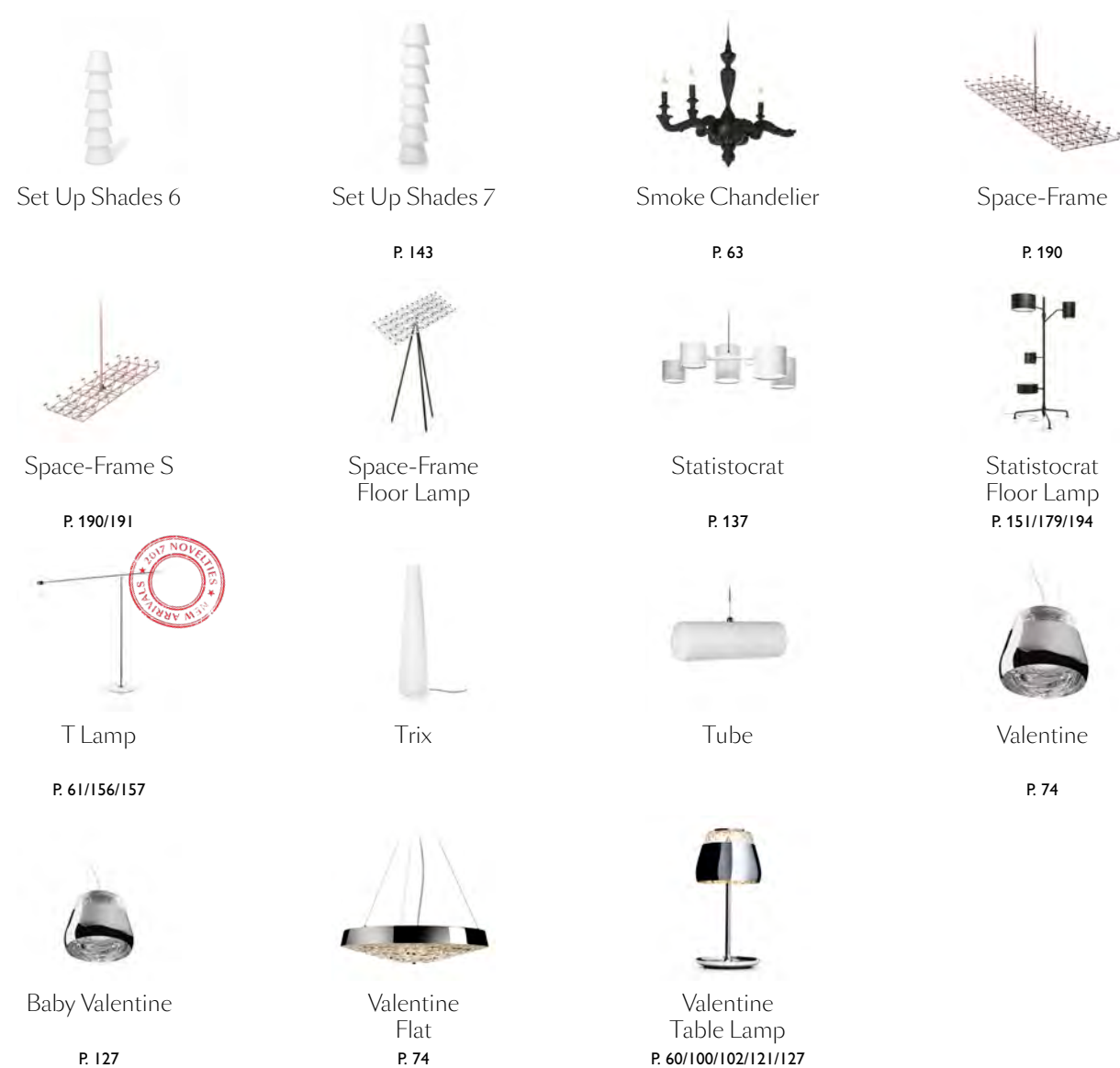


Salago L



Set Up Shades 5

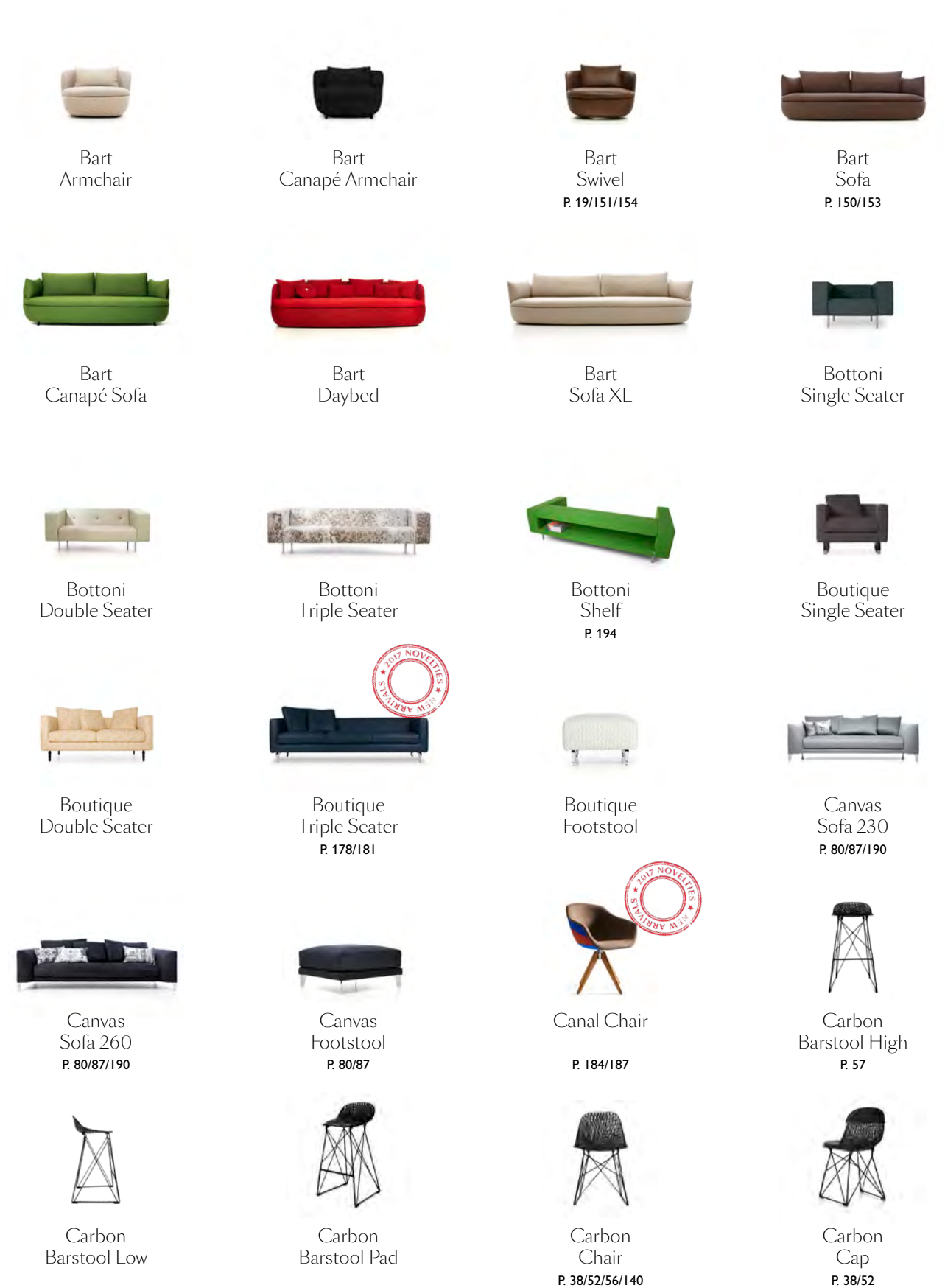
Index



Seaters



Index



Index



Carbon
Pad
P. 38/52



Charles Chair
P. 173



Charleston Sofa
P. 7/16



Cloud
Sofa
P. 36/39



Love
Sofa High Back
P. 114



Monster
Chair



Monster
Armchair
P. 27/121/122



Monster
Barstool High



Cloud
Footstool



Cocktail Chair
P. 39



Common Comrades
Emperor
P. 39



Common Comrades
Farmer



Monster
Barstool Low



Nest
Chair
P. 20



Nest
Sofa
P. 20/21



Nut
Dining Chair
P. 20/31/89



Common Comrades
Merchant



Common Comrades
Scholar
P. 39



Common Comrades
Seamstress
P. 39



Common Comrades
Tailor



Nut
Footstool
P. 136



Nut
Lounge Chair
P. 133/136



O.
Indoor
P. 48



O.
Outdoor
P. 49



Container Barstool
New Antiques High



Container Barstool
New Antiques Low



Container Stool
P. 69



Container Stool
New Antiques
P. 165



Power Nap
P. 170



Shift
Dining Chair
P. 137/142/143



Shift
Lounge Chair
P. 142



Smoke
Chair
P. 60/63



Extension Chair



Extension Chair
Card Holder



Extension Chair
Coat Stand



Extension Chair
Handbag Hanger



Smoke
Dining Armchair



Smoke
Dining Chair
P. 67



The Golden Chair
P. 81



V.I.P. Chair



Jackson
Chair
P. 12/14



Jackson
Footstool
P. 13



Love
Chair
P. 109/110/176/197



Love
Sofa
P. 117



Zio
Dining Chair
P. 22/24/189



Zio
Footstool
P. 160/167



Zio
Lounge Chair
P. 160/167



Zliq
Double Seater
P. 128

Index

Index



Zliq
Triple Seater
P. 127



Zliq
Island
P. 124

Tables



Bassotti
Coffee Table 40/108
P. 74



Bassotti
Coffee Table 40/72



Bassotti
Coffee Table 72/108



Bassotti
Coffee Table Ø72
P. 61/124



Chess Table
P. 60/192



Container Table
P. 57/69



Container Table
Bodhi
P. 52/176/197



Container Table
New Antiques
P. 38/54



Crochet Table
30/30
P. 20/30



Crochet Table
30/60
P. 21



Paper
Desk 140
P. 137



Paper
Desk 180
P. 6



Woody
P. 139



Urbanhike
P. 74/75/156



Pig Table



Paper
Table
P. 145

Index



Wood
P. 108/165



Turbo Table
High
P. 159



Turbo Table
Low



Zio
Coffee Table 110/110
P. 160



Zio
Coffee Table 60/145
P. 150/178



Zio
Dining Table 90/190



Zio
Dining Table 100/250
P. 22/25/161/189



Zio
Dining Table 100/310

Storage



Altdeutsche
Chest



Altdeutsche
Cabinet



Oblique
Large



Oblique
Small
P. 114



Paper
Buffet
P. 145



Paper
Cabinet
P. 145



Paper
Cupboard
P. 84/94/145



Zio
Buffet
P. 151

Accessories



Altdeutsche Clock
P. 137



Blow Away Vase



Little Bold



Big Bold



Menorah Bold



Delft Blue No. 1
P. 119



Delft Blue No. 2
P. 186



Delft Blue No. 3
P. 119



Delft Blue No. 4



Delft Blue No. 5
P. 83



Delft Blue No. 6



Delft Blue No. 7
P. 93/135



Delft Blue No. 8
P. 15/19



Delft Blue No. 9



Delft Blue No. 10
P. 135/186



Delft Blue No. 11



Delft Blue No. 12



Egg Vase S
P. 163/178



Egg Vase M
P. 163/178



Egg Vase L
P. 163/178



Elements 001



Elements 002
P. 150



Elements 005



Elements 006



Elements 007
P. 114



Heritage Pillows
P. 87



Oil Pillows



The Killing Of The Piggy Bank
P. 140

Colophon

ART DIRECTION

Marcel Wanders

DESIGN

David van 't Westende

VISUAL CONTENT

Hannah Lenglet

EDITORIAL CONTENT

Nikki Brandenburg,
Jan Haarhuis

CONTRIBUTING WRITERS

Debby Kasbergen,
Maria Elena Oberti,
Marika Bosso

ART PHOTOGRAPHY

Microsculpture: The Insect
Portraits of Levon Biss

PHOTOGRAPHERS

Andrew Meredith,
Nicole Marnati,
Robin Noordam,
Valérie van der Wal

COMPUTER RENDERINGS

Marcel Wanders Studio,
Gerard Fernandez

STYLING MILAN

Martine Schipper,
Davine Nagel

CALLIGRAPHY

Brody Neuenschwander

COMIC ART

COPYRIGHT ©2018 MOOOI B.V.

All rights reserved for all text,
layout and images.

No text, layout or pictures may be used or reproduced for commercial purposes by third parties, including dealers, retailers, internet shops and other, without the prior written approval by MOOOI B.V. The use of text, layout and images or its reproduction of such in press publications – both written and digital – is permitted, under the condition that MOOOI is credited.

MOOOI AMSTERDAM

Westerstraat 187
1015 MA Amsterdam
The Netherlands
T +31 (0)20 528 77 60
amsterdam@moooi.com

MOOOI LONDON

23 Great Titchfield Street
London, W1W 7PA
T +44 2089 625691
london@moooi.com

MOOOI NEW YORK

36 East 31st Street
New York, NY 10016
T +1 646 396 0455
ny@moooi.com

MOOOI STOCKHOLM

Norr Mälärstrand 26
Stockholm, Sweden
T +46 733 3272 00
stockholm@moooi.com

MOOOI TOKYO

Three F 6-11-1 Minami Aoyama
Minato-ku, Tokyo
T +81 33 400 1040
tokyo@moooi.com

MOOOI HEADQUARTERS

P.O. Box 5703
4801 EC Breda
Minervum 7003
4817 ZL Breda
The Netherlands

T +31 (0)76 578 44 44

F +31 (0)76 571 06 21


info@moooi.com

sales@moooi.com

(for sales information)

www.moooi.com

SOCIAL

 [instagram.com/moooi](https://www.instagram.com/moooi)

 [facebook.com/moooi](https://www.facebook.com/moooi)

 [pinterest.com/moooi](https://www.pinterest.com/moooi)

 twitter.com/moooi

