

ODESD2TM

Catalog
2020

Ukrainian brand new design

About company

Modern, intelligent, eye-catching.

When it comes to home or work space, we look for items that match our character. It's not about furnishings to be useful or special coloured – it's all about the bonding.

ODESD2 creates products, based on fundamental principles, filled with timeless aesthetics and embodied in latest technology. Each chair, table or sofa is full of deep meanings and is designed for like-minded people. From the United States to Australia, from Japan back to the heart of Ukraine – ODESD2 finds a response from people of different cultures, but with the same characters.

ODESD2 takes its name from the six principles of architecture, formed by Vitruvius in «The ten books on architecture». Each letter describes the way products are designed, produced and showed, and all together they form whole image of the modern Ukrainian design.

Contents

FURNITURE

	X series	N5 bar table	85
X1 lounge chair	7	OS1 executive desk	87
X2 lounge chair	9	OE4 conference table	89
X3 work station	11	Q3 coffee table	91
TVX stand	13	T1 table	93
X 1/2 shelf	15	T2 laptop table	95
X 2/2 shelf	17	T3 table	97
X 1120/400/430 commode	19	T4 desk	99
X 560/400/775 commode	21	WING 1 High Side Table	101
		WING 2 Low Side Table	103
	Chairs		Shelves
BB1 chair	23	E17 shelf	105
BB2 chair	25	S1 shelf	107
C1 chair	27	S4 shelf	109
C2 chair	29	Z shelf modular system	111
C4 chair	31		Benches
E2 chair	33	B1 bench	113
E3 chair	35	B2 bench	115
E16 chair	37	B3 bench	117
KLU1 chair	39		Commodes
PHO chair	41	D2 commode	119
	For kids	D3 commode	121
ARC bed	43	D4 commode	123
	Sofas	E12 commode	125
BB4 sofa	45	E13 commode	127
E7 sofa	47	E14 commode	129
E8 sofa	49		Bedsides
V2 sofa	51	E11 bedside	131
	Bar stools	H1 bedside	133
BB5 bar stool	53		Lounge chairs
C5 bar stool	55	BB3 lounge chair	135
E1 bar stool	57	E6 lounge chair	137
E4 bar stool	59	OM lounge chair	139
K4 bar stool	61	Q1 lounge chair	141
	Tables	Q1BLACK lounge chair	143
BB6 table	63	Q2 ottoman	145
BB7 coffee table	65	V1 lounge chair	147
BB8 coffee table	67	V1 ROTATE lounge chair	149
E5 table	69	WING lounge chair	151
E15 coffee table	71		Couches
EX table	73	E9 couch	153
F1 table	75	E10 couch	155
N1 coffee table	77		
N2 coffee table	79		
N3 coffee table	81		
N4 table	83		

LIGHT

	Lamps
15.77 (S,M,L) lamps	158
GLAZER 1 lamp	160
GLAZER 2 lamp	162
GLAZER 3 lamp	164

DECOR

	Wall panels
P1 steel wall panel	167
P1 wooden wall panel	169
P2 steel wall panel	171
P2 wooden wall panel	173
P3 steel wall panel	175
P3 wooden wall panel	177

INTERIORS

FOODCAFE	180
THE CAKE	182
INTERIOR	184
LEVITATION	186
ZLT	188
HALO	190
TAKAVA COFFEE-BUFFET	192
BURSA	194
4CITY	196
APARTMENT BY TREBADESIGN	198
BROCARD NICHE BAR	200
“FFU PRODUCTION” OFFICE	202
PRIVATE HOUSE INTERIOR	204

CONTRACT DIVISIONCONTRACT DIVISION

DEALERS

Furniture



1. **Body:** steel, color
2. **Cushions:** hollowfiber, textile

1130 x 865 x 1640 mm

X2 lounge chair



- 1. Cushions: hollowfiber, textile
- 2. Body: steel, color

920 x 865 x 1080 mm



1. Body: steel, [color](#)

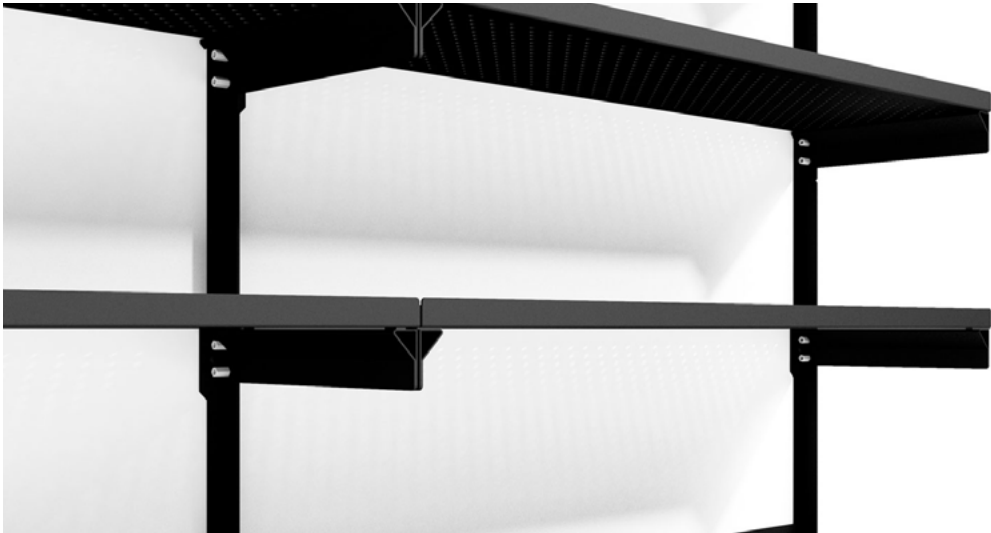
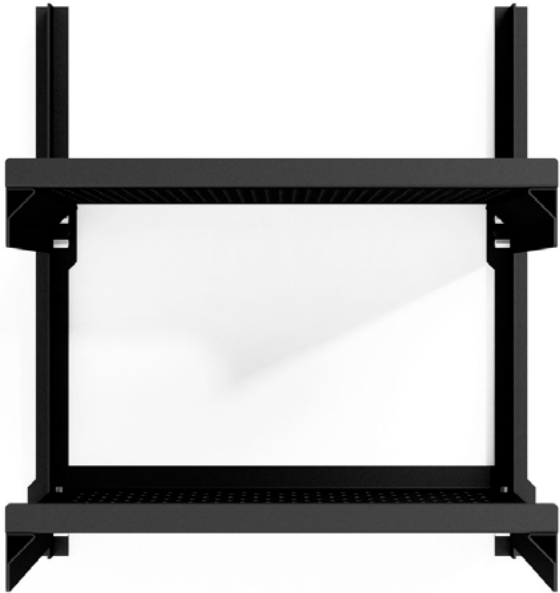
1325 x 1300 x 840 mm



1. Body: steel, color

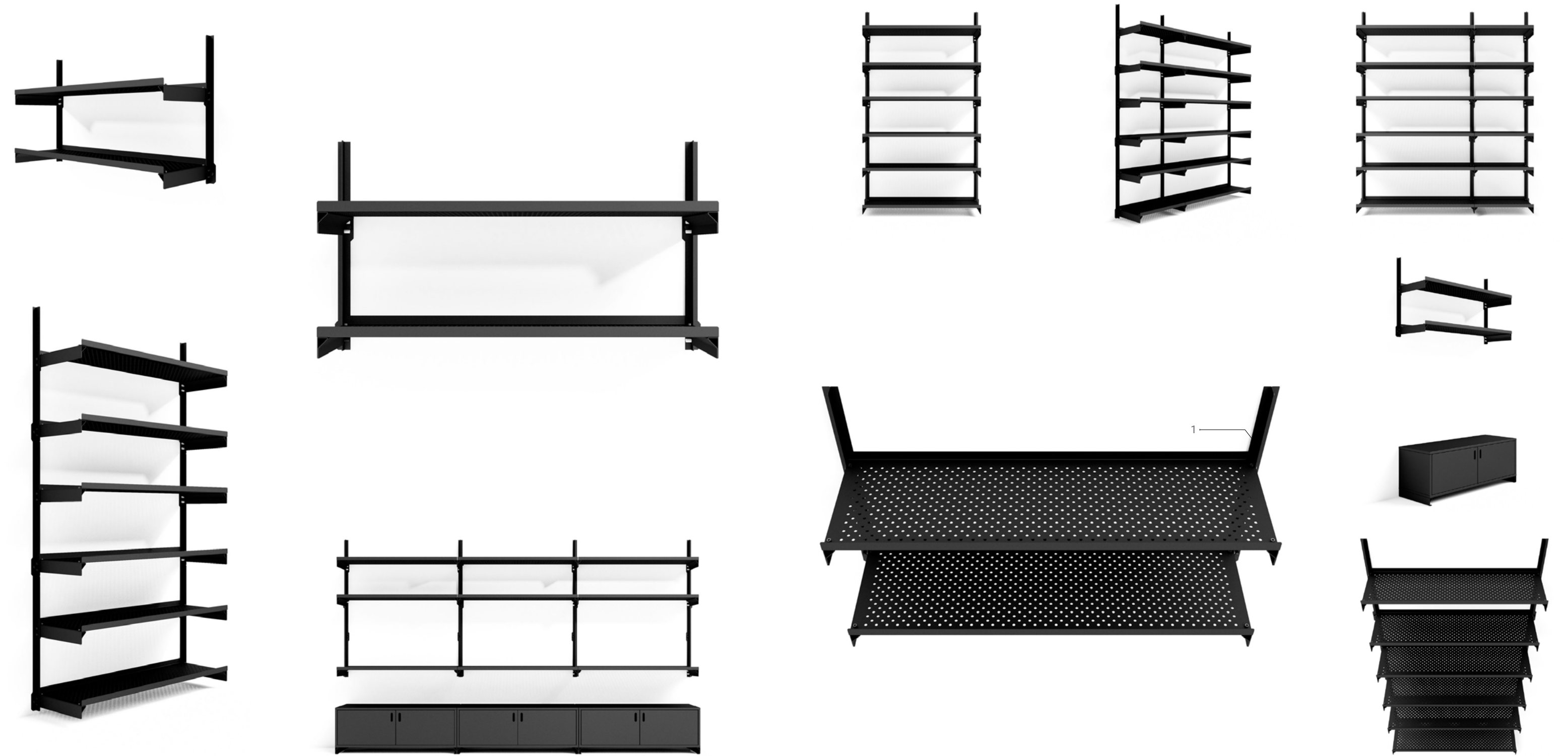
1465 x 710 x 1540 mm

X 1/2 shelf



1. Body: steel, [color](#)

673 x 623 x 344 mm



1. Body: steel, [color](#)

1183 x 673 x 344 mm

X 1120/400/430 commode



1. Body: steel, [color](#)

1120 x 400 x 430 mm

X 560/400/775 commode



1. Body: steel, [color](#)

560 x 400 x 775 mm

BB1 chair



- 1. Frame: steel, [color](#)
- 2. Seat: [leather](#)

777 x 600 x 535 mm

BB2 chair



- 1. Frame: steel, color
- 2. Back: MDF
- 3. Seat: leather

825 x 600 x 535 mm



- 1. Seat, back: textile
- 2. Base: plywood, veneer

780 x 475 x 560 mm



- 1. Seat, back: textile
- 2. Base: plywood, veneer

780 x 550 x 560 mm



- 1. Base: plywood, veneer
- 2. Seat: MDF, color
- 3. Upholstery: textile

775 x 495 x 575 mm



- 1. Upholstery: textile
- 2. Base: steel, color

775 x 485 x 565 mm



- 1. Upholstery: textile
- 2. Armrest: ash, solid wood
- 3. Base: steel, color

700 x 605 x 525 mm

E16 chair



- 1. Seat: plywood, [color](#)
- 2. v: steel, [color](#)

760 x 550 x 490 mm

KLU1 chair



1. **Base:** ash, solid wood

770 x 610 x 550 mm

PHO chair



- 1. Base: steel, color
- 2. Seat: faux leather

622 x 550 x 772 mm

ARC bed



1. **Body:** beech, solid wood
2. **Base:** steel, color

ARC: 1040 x 650 x 1250 mm
ARC mini: 1040 x 650 x 850 mm

BB4 sofa



1. Frame: steel, color
2. Seat, cushions: textile, polyurethane foam, hollowfiber

640 x 1640 x 735 mm



- 1. Armrests: ash, solid wood
- 2. Body: steel, color
- 3. Base upholstery: felt
- 4. Cushions: textile

1650 x 700 x 900 mm



- 1. Armrests: ash, solid wood
- 2. Base upholstery: felt
- 3. Cushions: textile
- 4. Body: steel, color

2450 x 700 x 900 mm



1. Body: aluminium, color
2. Legs: plywood, veneer
3. Base upholstery: felt
4. Cushions: textile

1266 x 1800 x 1030 mm



1. Seat: plywood, two-component urethane coating
2. Frame: steel, color

515 x 515 x 750 mm

C5 bar stool



- 1. Rail: MDF, color
- 2. Seat: textile
- 3. Legrest: steel, color
- 4. Rail: stainless steel
- 5. Seat: steel, color
- 6. Legs: plywood, veneer

870 x 510 x 430 mm



- 1. Base: steel, color
- 2. Seat: oak, solid wood

765 x 430 x 430 mm

E4 bar stool



- 1. Upholstery: textile
- 2. Armrest: ash, solid wood
- 3. Base: steel, color

995 x 645 x 610 mm

K4 bar stool



- 1. Seat: plywood, veneer
- 2. Base: steel, color
- 3. Legs: oak, solid wood

750 x 460 x 400 mm

BB6 table



- 1. **Countertop:** plywood, two-component urethane coating
- 2. **Base:** steel, color

625 x 625 x 750 mm

BB7 coffee table



1
2

- 1. Countertop: plywood, two-component urethane coating
- 2. Base: steel, [color](#)

850 x 850 x 340 mm



- 1. Countertop: plywood, two-component urethane coating
- 2. Base: steel, color

625 x 625 x 540 mm

E5 table



- 1. Countertop: plywood, veneer
- 2. Base: steel, color

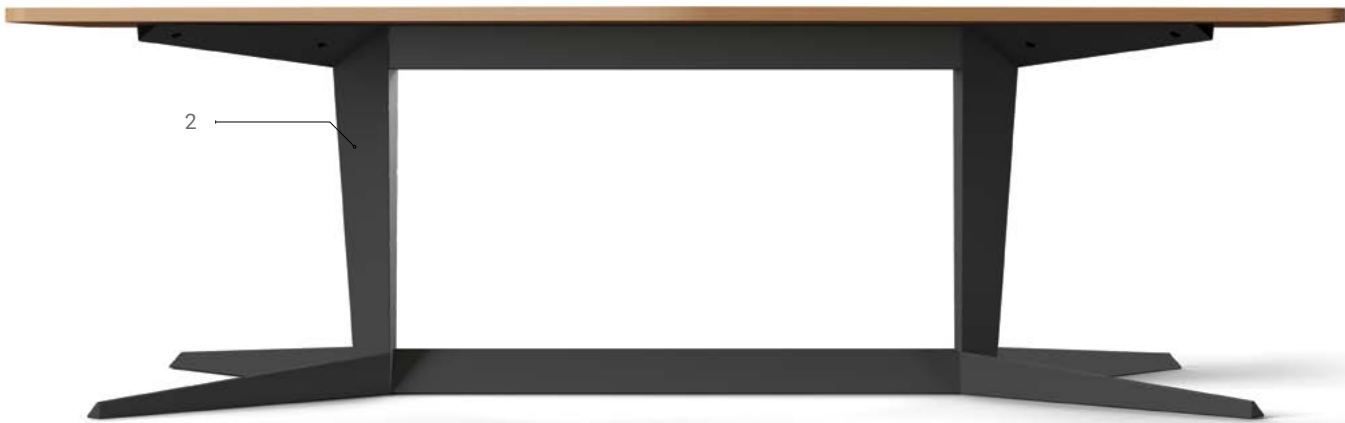
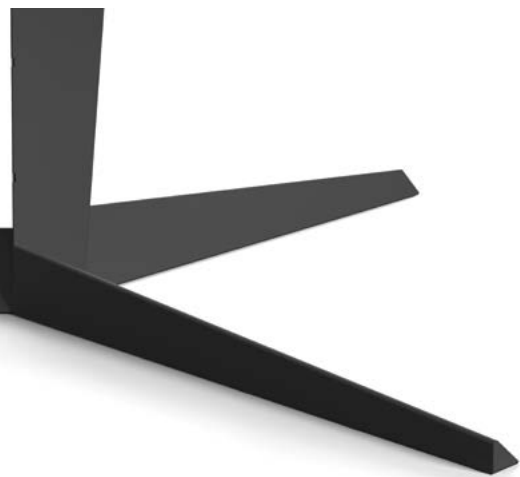
1800 x 900 x 750 mm

E15 coffee table



- 1. Countertop: plywood, veneer
- 2. Base: steel, color

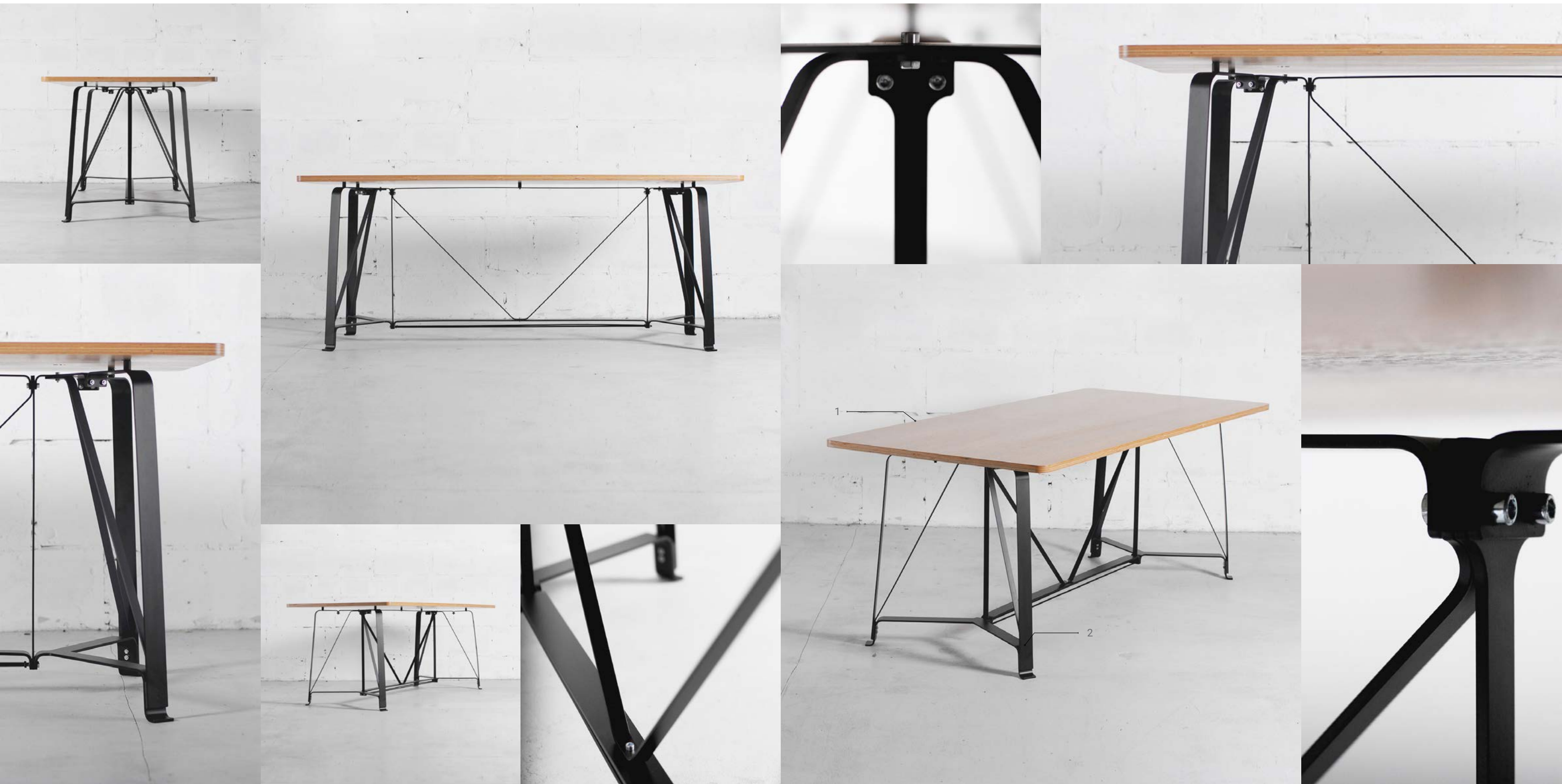
450 x 950 x 950 mm



- 1. Countertop: plywood, veneer
- 2. Base: steel, color

725 x 1255 x 2400 mm

F1 table



- 1. Countertop: plywood, veneer
- 2. Base: steel, color

760 x 900 x 1900 mm



1. Countertop: MDF, color
2. Legs: plywood, veneer
- 1200 x 350 mm



- 1. Countertop: MDF, color
- 2. Legs: plywood, veneer

525 x 500 mm



- 1. Countertop: MDF, color
- 2. Legs: plywood, veneer

700 x 400 mm

N4 table



- 1. Countertop: MDF, color
- 2. Legs: plywood, veneer

1000 x 750 mm

N5 bar table



- 1. Countertop: MDF, color
- 2. Legs: plywood, veneer

1140 x 750 mm

OS1 executive desk



- 1. Countertop: plywood, veneer
- 2. Divider, boxes: MDF, color
- 3. Legs: steel, color

765 x 1200 x 2400 mm

OE4 (M/L) conference table



- 1. Desktop: plywood, veener
- 2. Base: steel, color

M: 765 x 1200 x 3690 mm
L: 765 x 1200 x 5050 mm



- 1. Legs: steel, color
- 2. Countertop: plywood, veneer

530 x 530 mm



- 1. Countertop: MDF, color
- 2. Legs: plywood, veneer

2000 x 900 x 350 mm

T2 laptop table



1. Countertop, legs: plywood, veneer

800 x 370 x 275 mm

T3 table



Material: plywood, veneer

1500 x 750 x 750 mm



1. Box, rear panel: MDF, color
2. Legs: plywood, veneer
3. Countertop: plywood, veneer

1700 x 750 x 750 mm

WING 1 High Side Table



1. Base: ash, solid wood

690 x 400 x 400 mm

WING 2

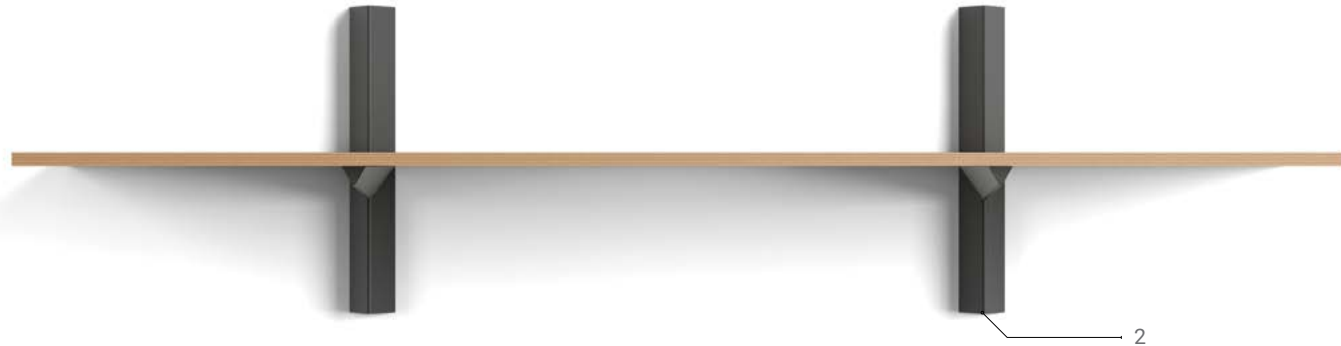
Low Side Table



1. Base: ash, solid wood

519 x 500 x 500 mm

E17 shelf



- 1. Shelves: plywood, veneer
- 2. Bindings: steel, color

400 x 1600 x 400 mm



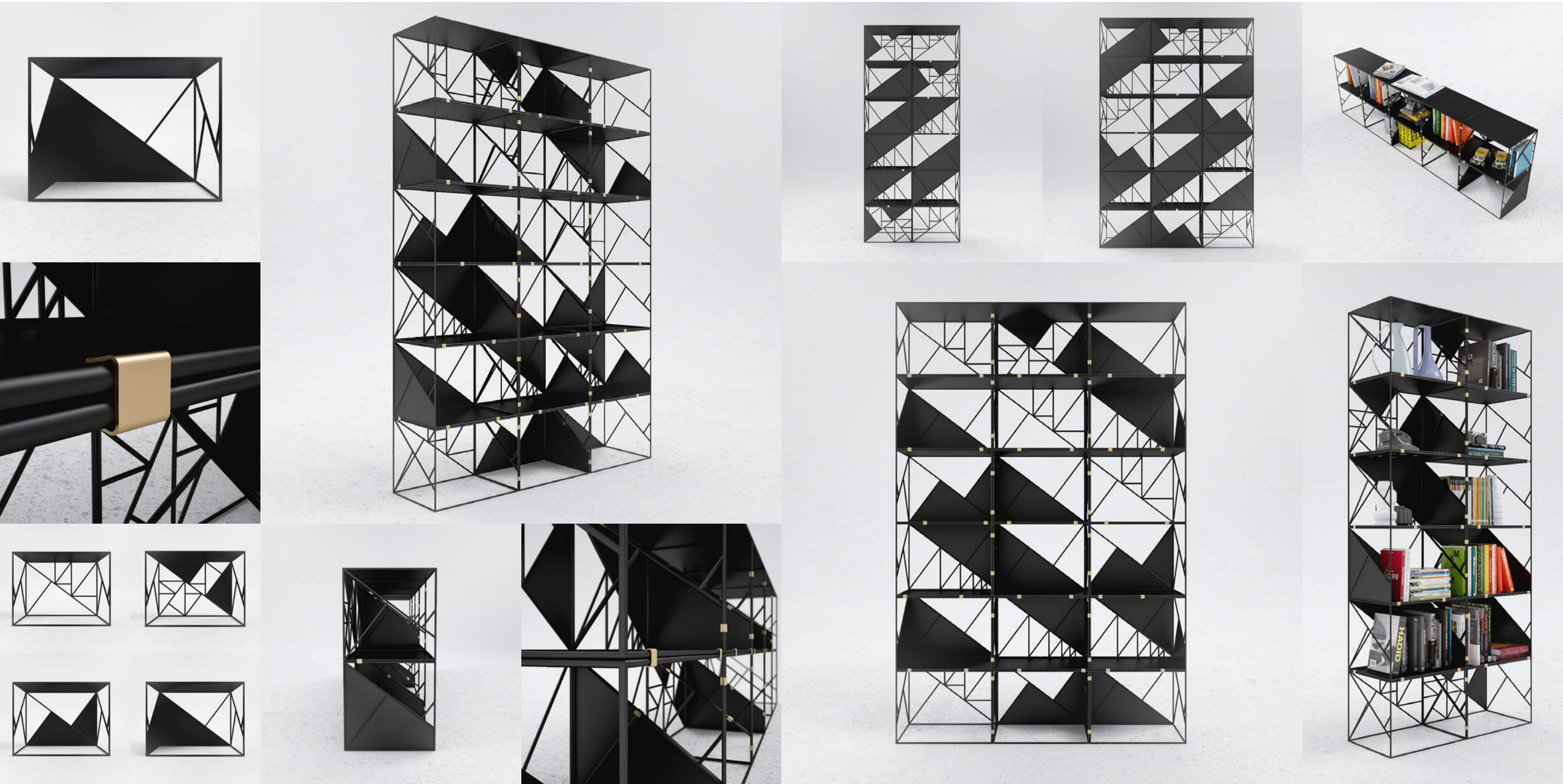
- 1. Body: plywood, veneer
- 2. Shelves: MDF, color

1180 x 1050 x 400 mm



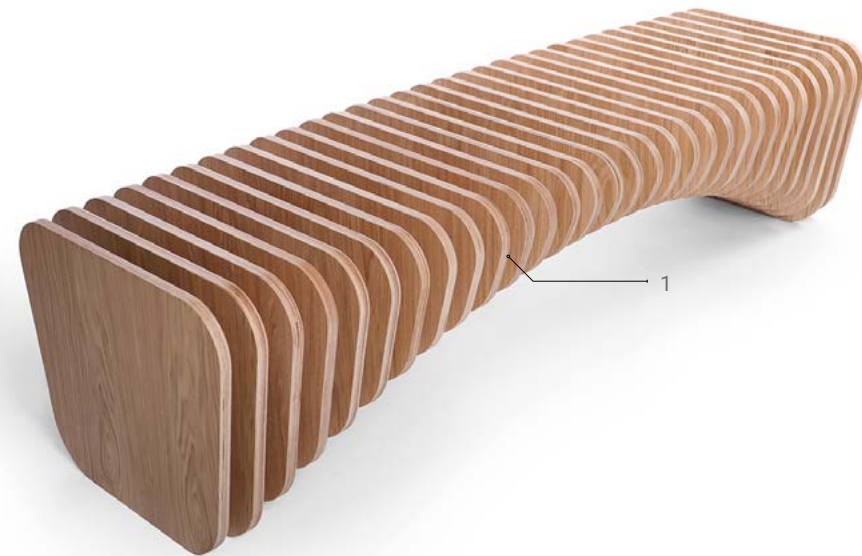
1. Body: plywood, veneer
2. Rear panel, dividers: MDF, color

1330 x 1200 x 500 mm



Frame: steel, color

B1 bench



Body: plywood, veneer

1820 x 600 x 450 mm



- 1. Seat: MDF, color
- 2. Legs: plywood, veneer

1240 x 350 x 450 mm

B3 bench



- 1. Upholstery: textile
- 2. Seat: MDF, color
- 3. Legs: plywood, veneer

1500 x 450 x 450 mm



- 1. Drawer: MDF, color
- 2. Body: plywood, veneer

1800 x 800 x 425 mm



- 1. Drawer: MDF, color
- 2. Body: plywood, veneer

1200 x 800 x 425 mm



- 1. Drawer: MDF, color
- 2. Body: plywood, veneer

600 x 800 x 425 mm

E12 commode



- 1. Drawer: plywood, [veneer](#)
- 2. Legs: steel, [color](#)
- 3. Body: MDF, [color](#)

1800 x 800 x 425 mm



- 1. Drawer: plywood, veneer
- 2. Legs: steel, color
- 3. Body: MDF, color

1200 x 800 x 425 mm

E14 commode



- 1. Drawer: plywood, [veneer](#)
- 2. Legs: steel, [color](#)
- 3. Body: MDF, [color](#)

600 x 800 x 425 mm



- 1. Legs: steel, [color](#)
- 2. Body: MDF, [color](#)
- 3. Drawer: plywood, [veneer](#)

500 x 500 x 500 mm



1. Body: MDF, color
2. Body, legs: plywood, veneer

500 x 500 x 500 mm

BB3 lounge chair



- 1. Frame: steel, [color](#)
- 2. Seat, cushions: [textile](#), polyurethane foam, hollowfiber

645 x 800 x 790 mm

BUCKYBALL longe chair



1. Covers: textile

1030 x 1500 x 1300 mm

E6 lounge chair



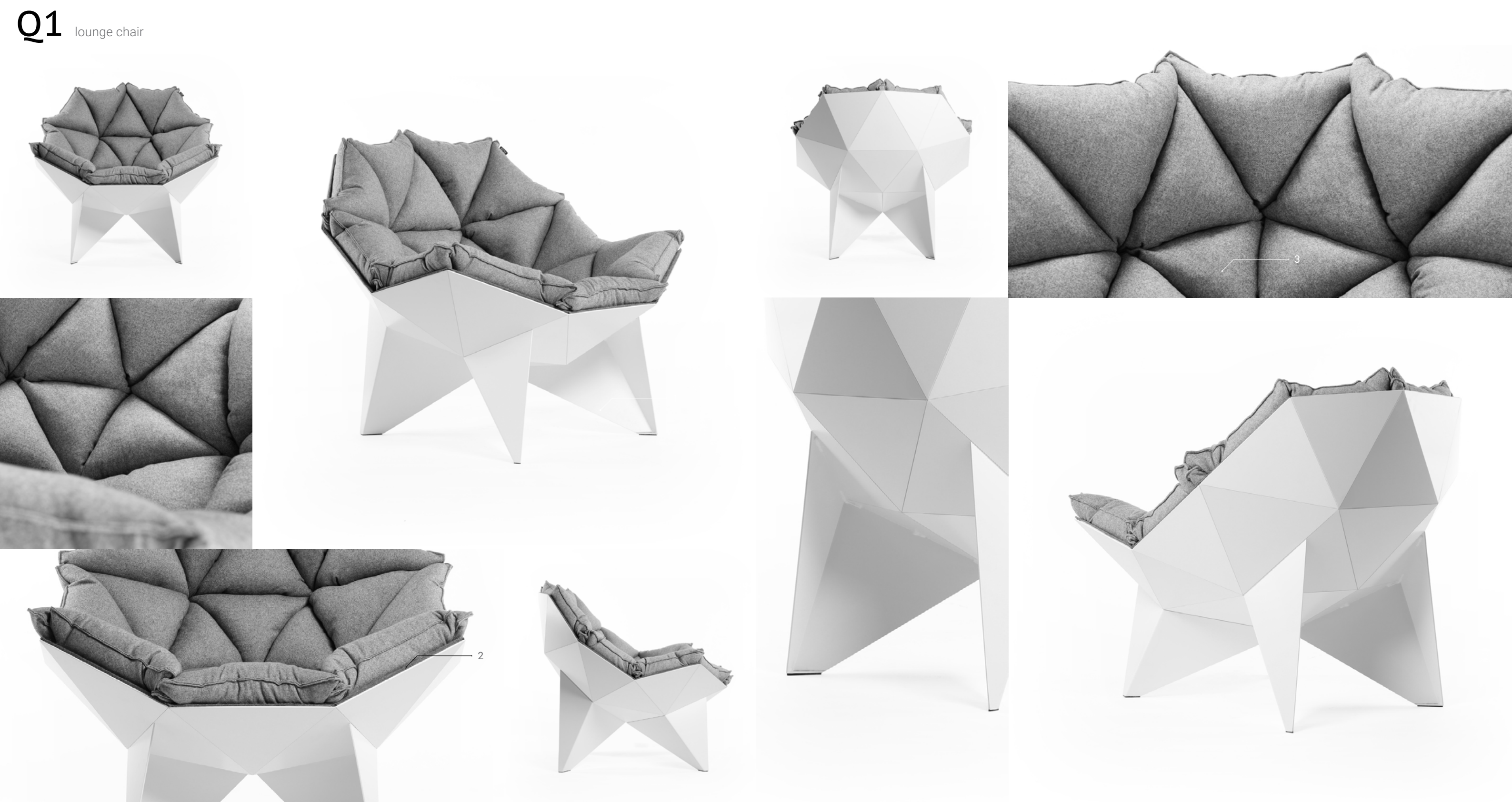
- 1. Seat, cushions: textile
- 2. Body: steel, color
- 3. Base upholstery: felt
- 4. Armrests: ash, solid wood

900 x 900 x 700 mm

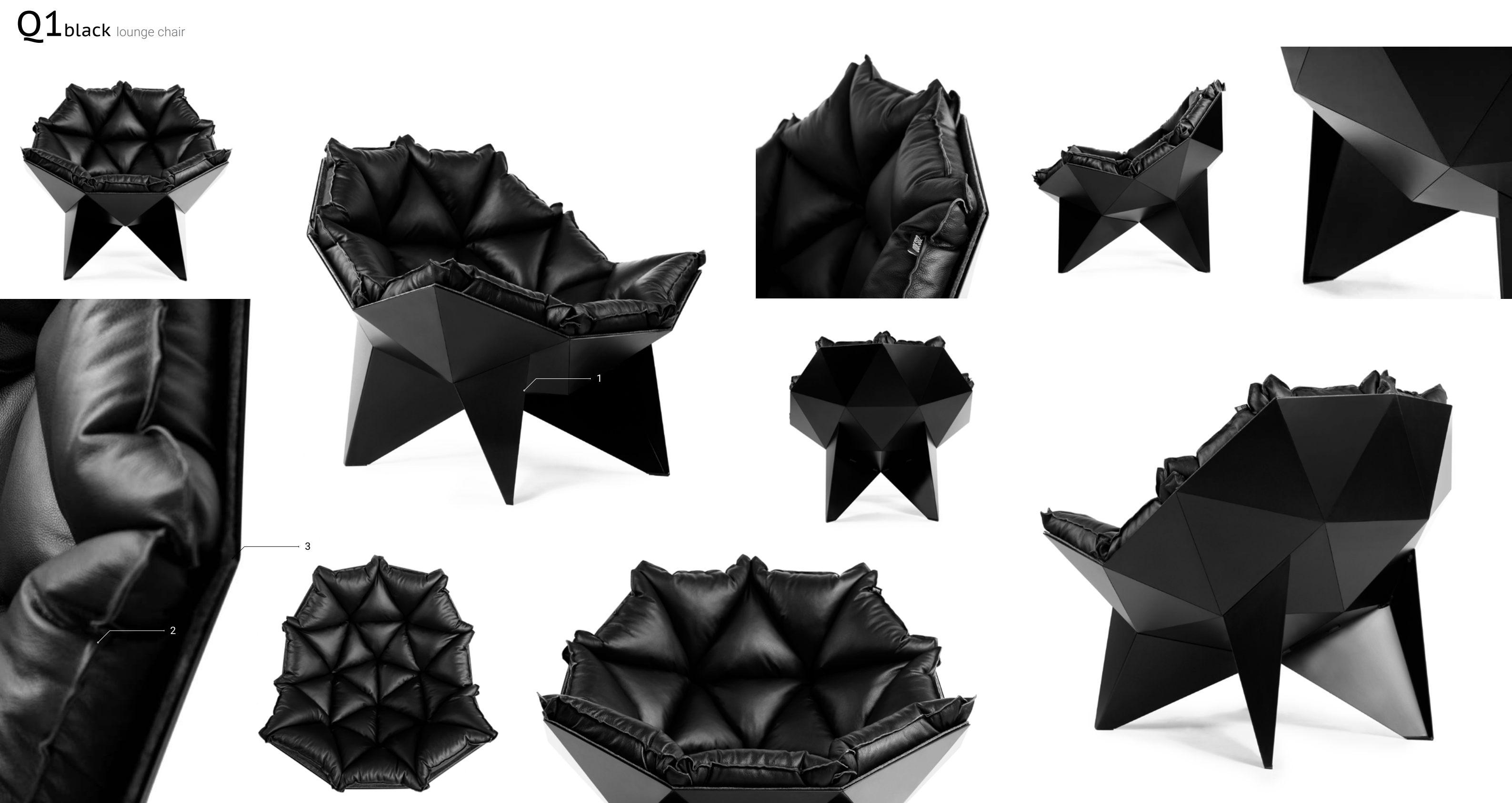


- 1. Body: steel, [color](#)
- 2. Seat: epoxy compound

800 x 830 x 560 mm



- 1. Body: steel, color
 - 2. Cushions: textile
 - 3. Upholstery: felt
- 800 x 890 x 880 mm



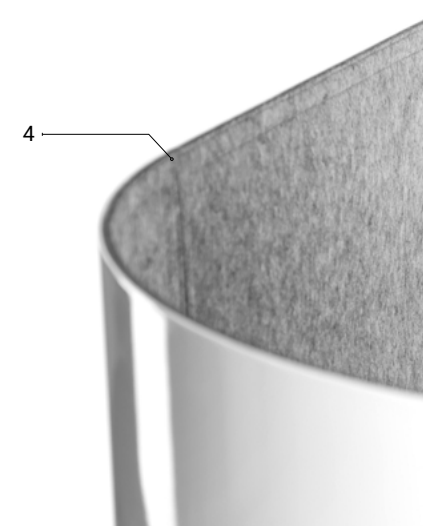
- 1. Body: steel, [color](#)
- 2. Cushions: [leather](#)
- 3. Upholstery: felt

800 x 890 x 880 mm



1. Base: steel, color
2. Cushion: textile

400 x 530 x 430 mm



1. Legs: plywood, veneer
2. Body: aluminium, color
3. Cushions: textile
4. Base upholstery: felt

1270 x 920 x 970 mm

V1 ROTATE lounge chair



- 1. Legs: plywood, veneer
- 2. Body: aluminium, color
- 3. Cushions: textile
- 4. Base upholstery: felt

1270 x 920 x 970 mm

WING lounge chair



- 1. Cushion, roll: hollowfiber, textile
- 2. Back: plywood, veneer
- 3. Seat: polyurethane foam, textile
- 4. Base: solid wood, ash

1160 x 965 x 840 mm



- 1. Body: steel, [color](#)
 - 2. Cushion: [textile](#)
 - 3. Lining: felt
- 800 x 800 x 460 mm

E10 couch



1.

Body: steel, [color](#)
2.

Lining: felt
3.

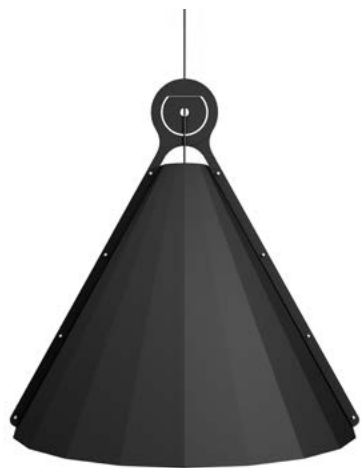
Cushion: [textile](#)
- 1600 x 800 x 460 mm

Light

15.77 (S,M,L) lamps



(S)



(M)



(L)



1. Body: steel, [color](#)

S: 500 x 530 mm
M: 800 x 833 mm
L: 1081 x 1114 mm

GLAZER 1 lamp



1. Body: ceramics, color
2. Cap: oak, solid wood
3. Base: steel, color

330 x 235 mm

GLAZER 2 lamp



1.

Body: ceramics, color
2.

Cap: oak, solid wood
3.

Base: steel, color
- 330 x 525 mm

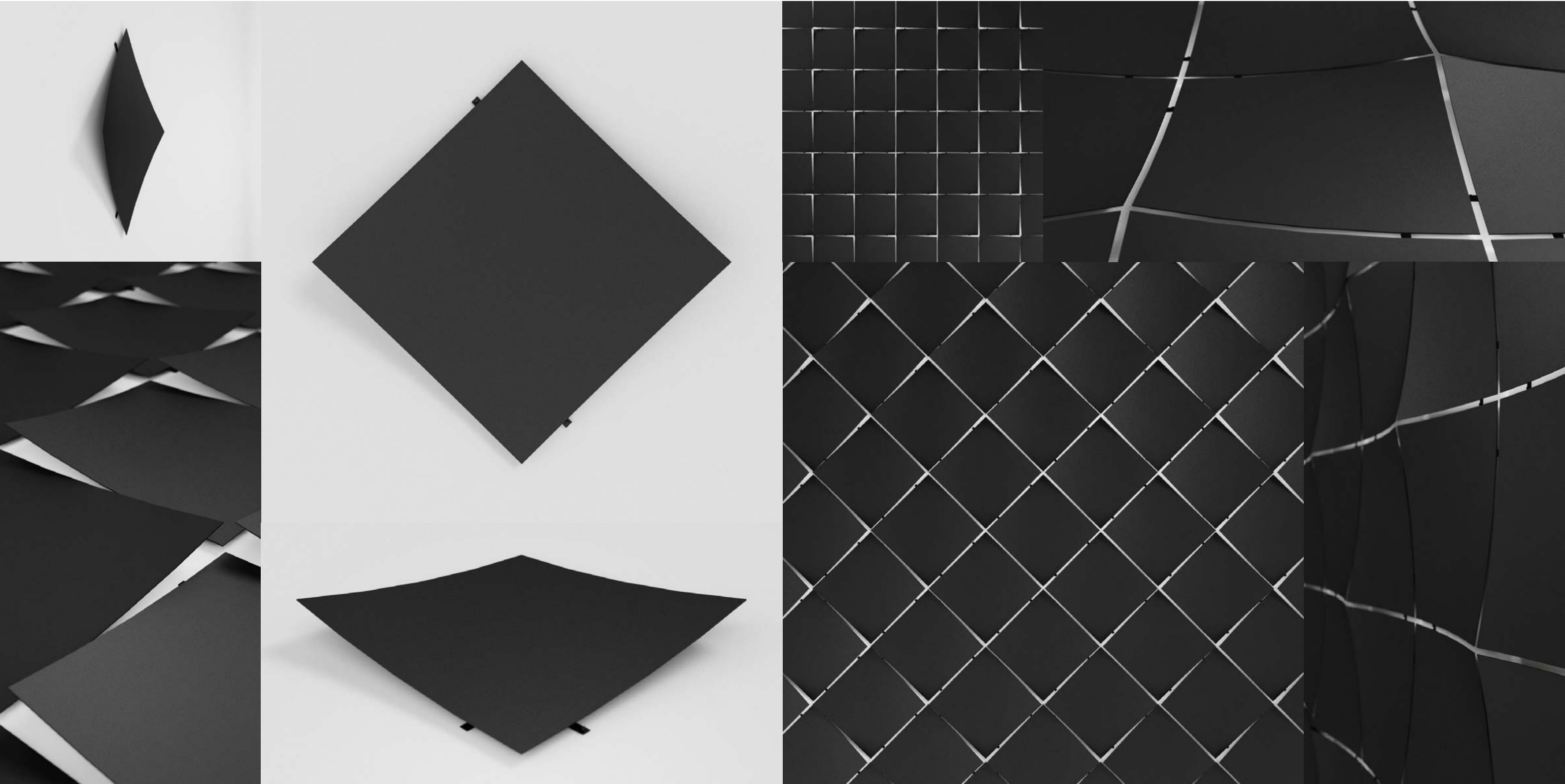
GLAZER 3 lamp



- 1. Body: ceramics, [color](#)
- 2. Cap: oak, [solid wood](#)
- 3. Base: steel, [color](#)

500 x 1525 mm

Decor



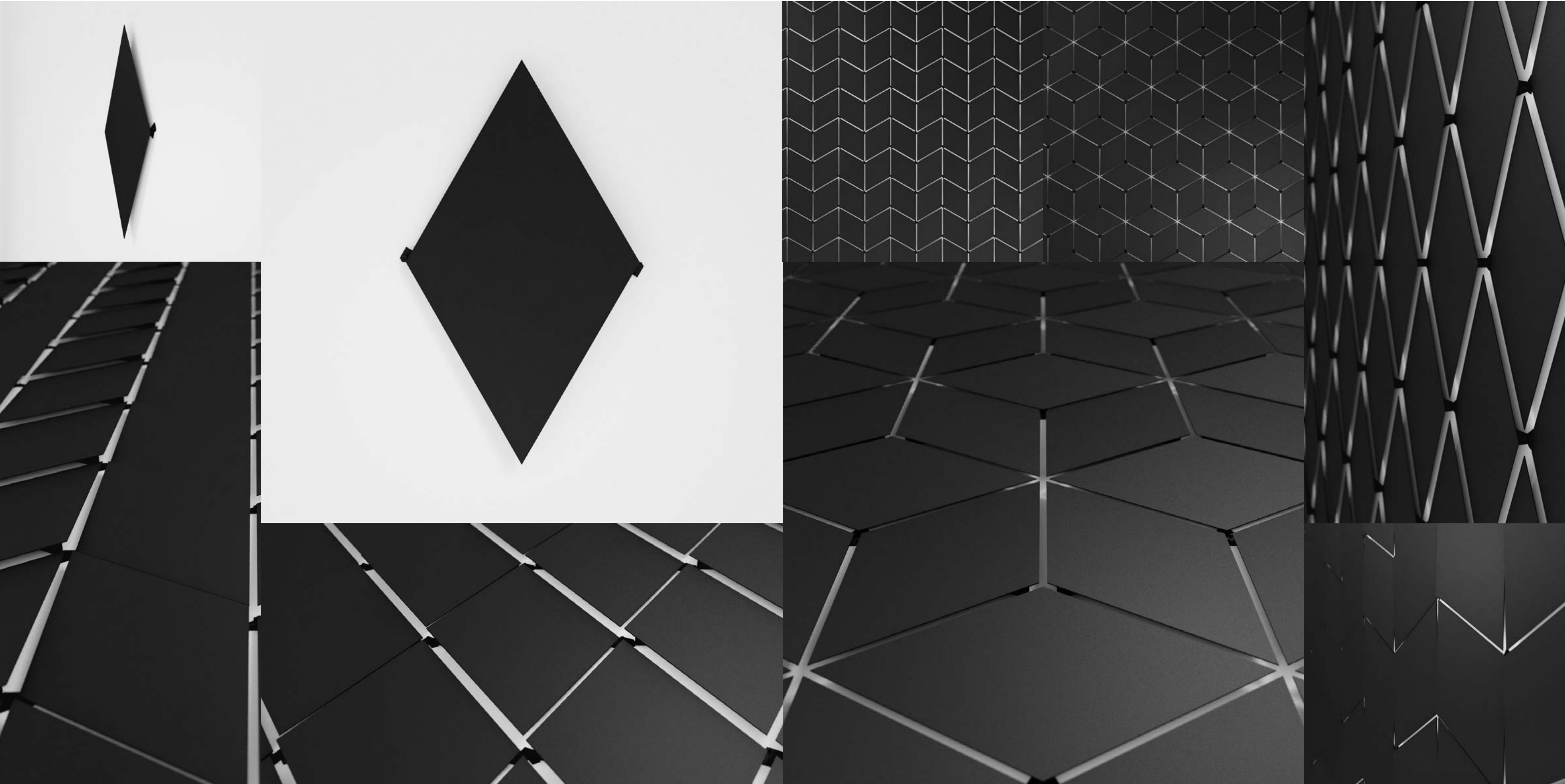
Material: steel, [color](#)

487 x 487 mm



Material: MDF, [color_veneer](#)

50 x 500 x 500 mm



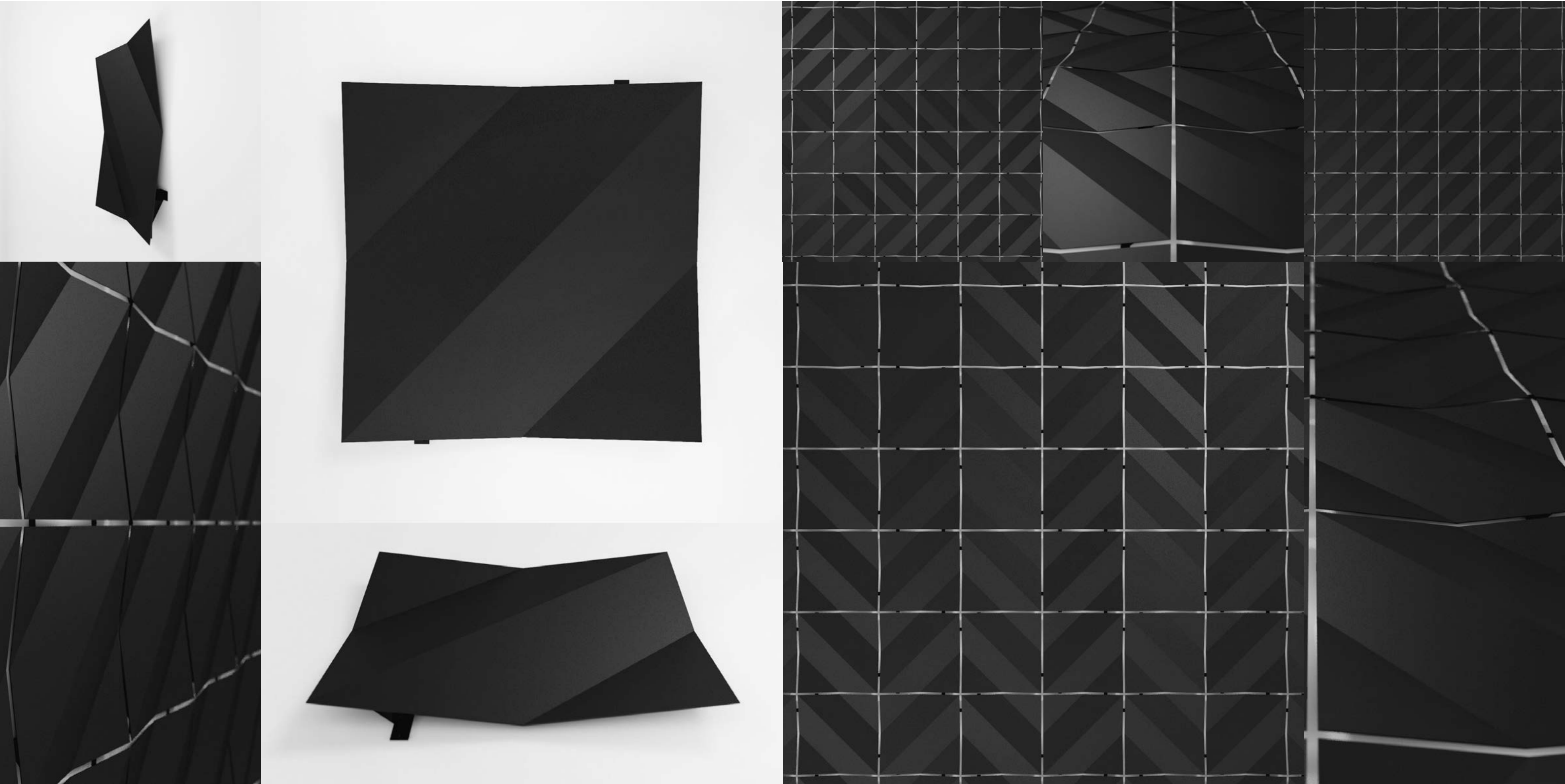
Material: steel, [color](#)

346 x 600 mm

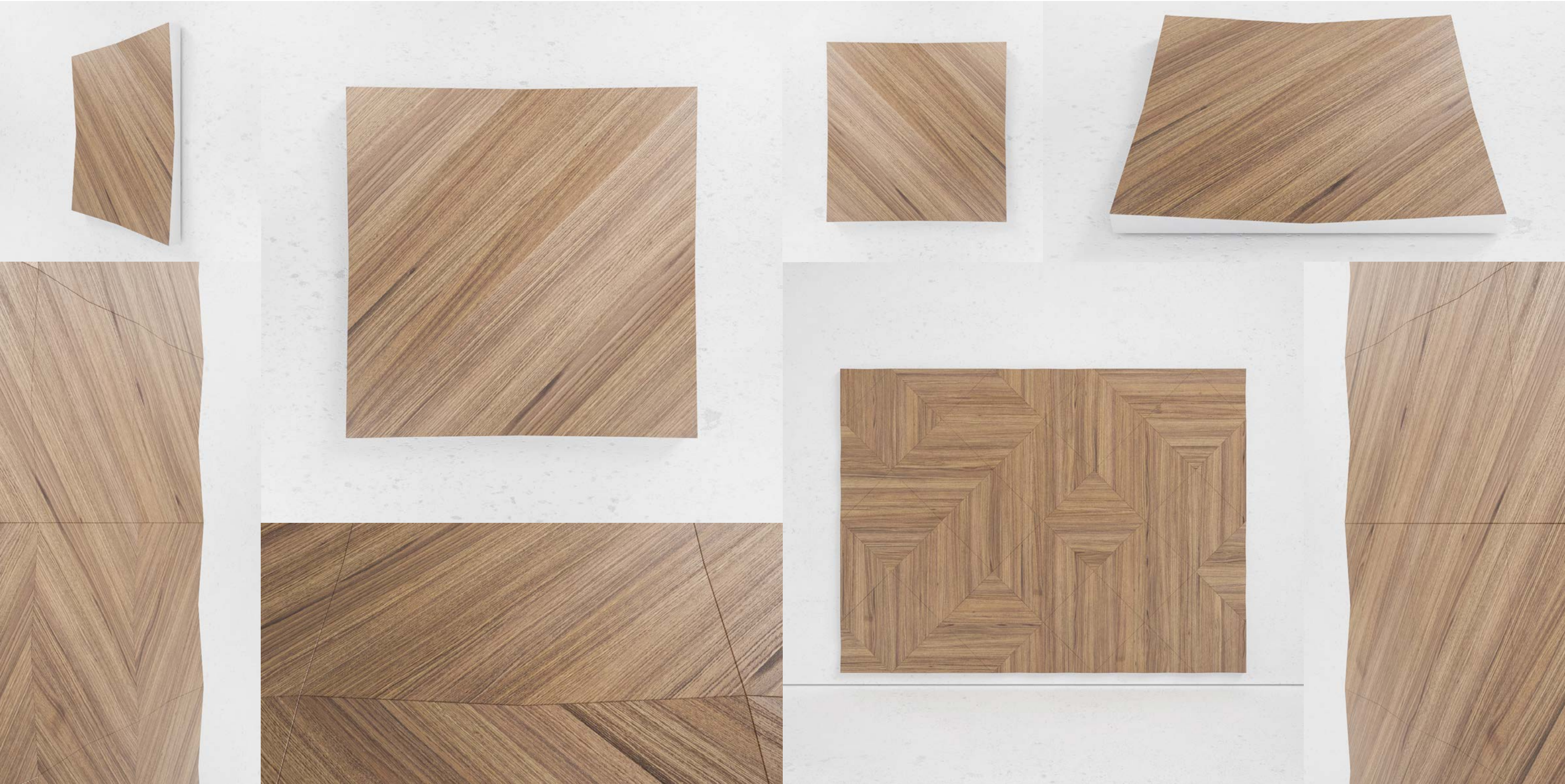


Material: MDF, color, veneer

30 x 345 x 600 mm



Material: steel, [color](#) 487 x 487 mm



Material: MDF, [color_veneer](#)

35 x 500 x 500 mm

Interiors

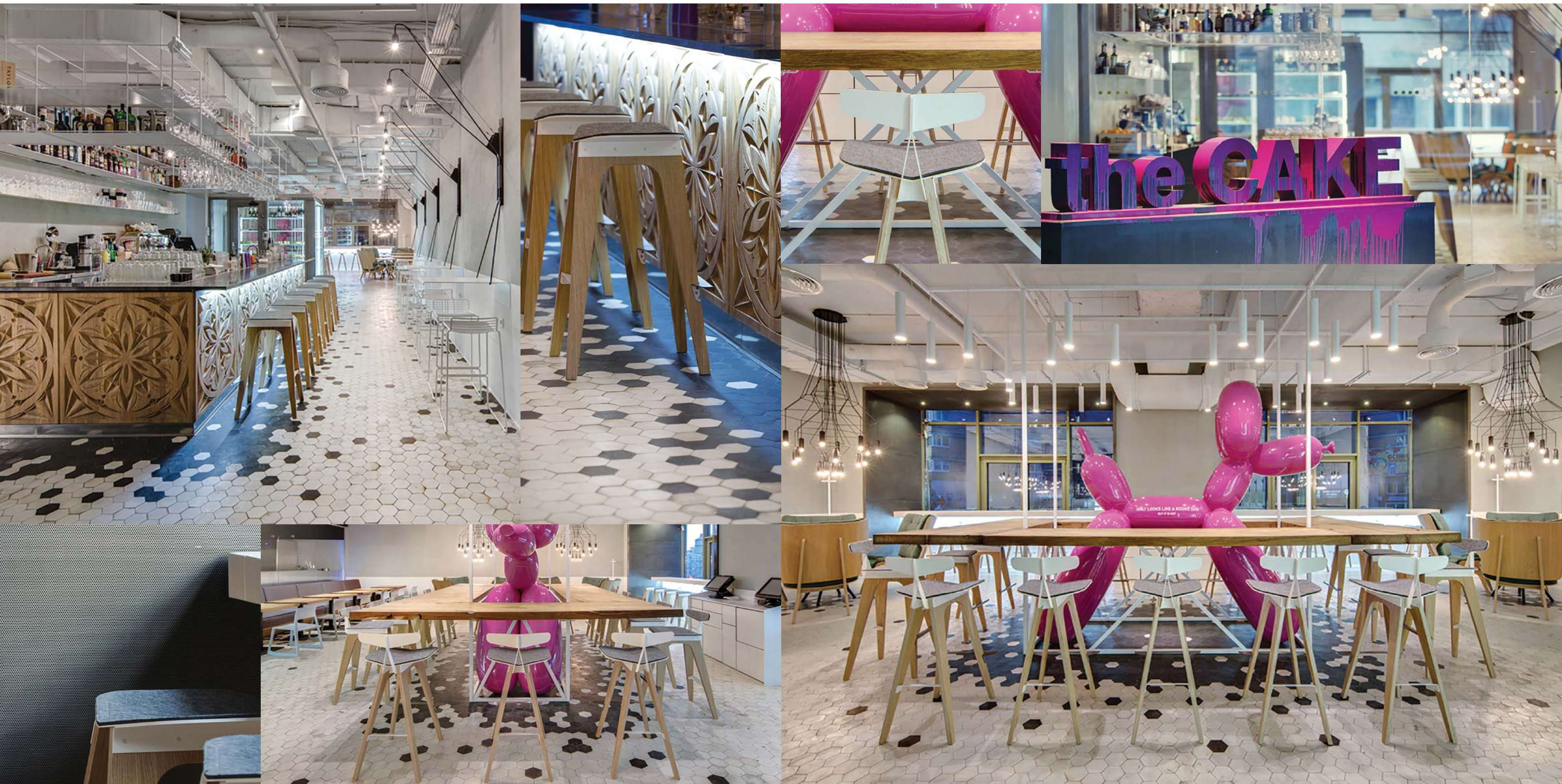


We want to share with you the most pleasant gift to us for New Year holidays - in Moscow on Pokrovka Street, opened cafe with laconic title «foodcafe». It was the beginning of cooperation with architectural bureau SHAR Project.

Visitors of the «foodcafe» can see our C1 and C2 chairs, B3 bench and bar stools that we developed specially for this project.

THE CAKE

Bar stool C5



Confectionery THE CAKE - a new wonderful place - opened in Kiev on November 21. This is a newproject of Dmitry Zahodyakin and Alina Kosichkina, created with Valery Sozanovsky, the author of delicious and beautiful desserts.

The interior of the project is by Slava Balbek and Nadya Chabannaya.

Almost all objects in THE CAKE are produced in Ukraine, including tile, bar and furniture.

Bar stools C5, created in our bureau, are used in the interior. Also a modification of the C5 bar stool - C5M bar stool with backrest was designed especially for this project.

Visit the place: Velika Vasilkivska st. 5, Arena.

Photo: Andrew Bezuglov

INTERIOR

coffee table N1, coffee table N2, N3, bench B3



Our design bureau has developed a set of furniture for one of Kiev apartments. It includes: coffee tables, objects in the kitchen, bathroom and hallway, and bedroom furniture.

In project took part:

Interior Designer - Alena Yudina

Forged doors and lamps - Ruslan Levitsky

Mosaic decor - Love mosaic

Home textiles - fashion designer Sweta Yaremko

The furniture in the cabinet, floor lamp in the living room - Roman Shpelyk

LEVITATION

lounge chair Q1 black, V1, bar stools C5, E1, E4, E3, tables N1, Q3



An architect Aleksey Sherbachev (the drive of INCUBE studio) has created new office interior for successful business company in Kyiv. He has applied contemporary solutions in the object. It is open space with concrete surfaces and natural materials, muted palette with the accent on the red decorative elements.

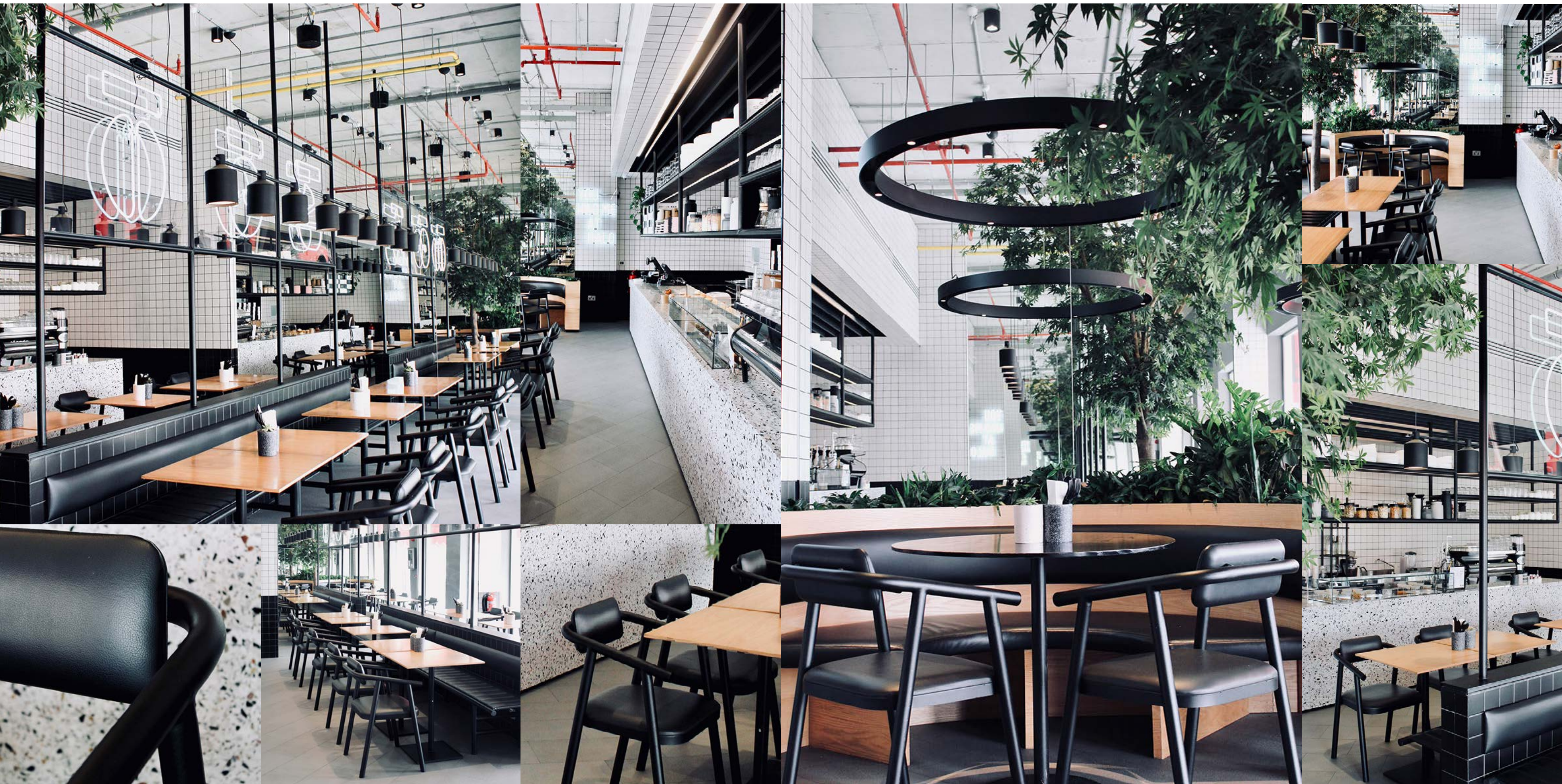
Designer has put furniture by Ukrainian manufacturers in the interior. In different places of the big open space there are Q1 Black lounge chair, V1 lounge chairs, C5, E1, E4 stools. Round tables with different high complement distinct geometry of seats.



In November 2015 Kiev U//ME Architects architectural studio presented the interior of an individual apartment in a modern style called «ZLT».

E1 barstools, E3 chairs and Q1 black armchairs, created by design bureau ODES2, are used in the interior.

We thank Yuriy Khlop and Irina Karpenko - the authors of the interior for collaboration!



Halo is an artisanal bakeshop and café in Doha (Qatar) that specializes in all things dough; from infinitely flaky croissants and cronuts, to indulgent cloudy donuts and incredibly chewy cookies. The trinity that defines Halo are soft-serve ice cream, perfectly roasted and hand-picked coffee beans, and artisanal hand-crafted pastries. Halo is all about adding a signature twist to classic ingredients aiming to become synonymous with an unrivaled experience of indulgence.

The project was embodied by fortytwelve - design studio, specializing in interior design, branding, and creative direction for commercial and retail spaces.

The interior shows a great combination of white tiles, wooden textures of tables and strict black lines of the lamps, shelves and chairs. The BB2 chairs, designed by Slava Balbek feels perfect in this laconic coffee place.

TAKAVA COFFEE-BUFFET

Chairs C2, C5

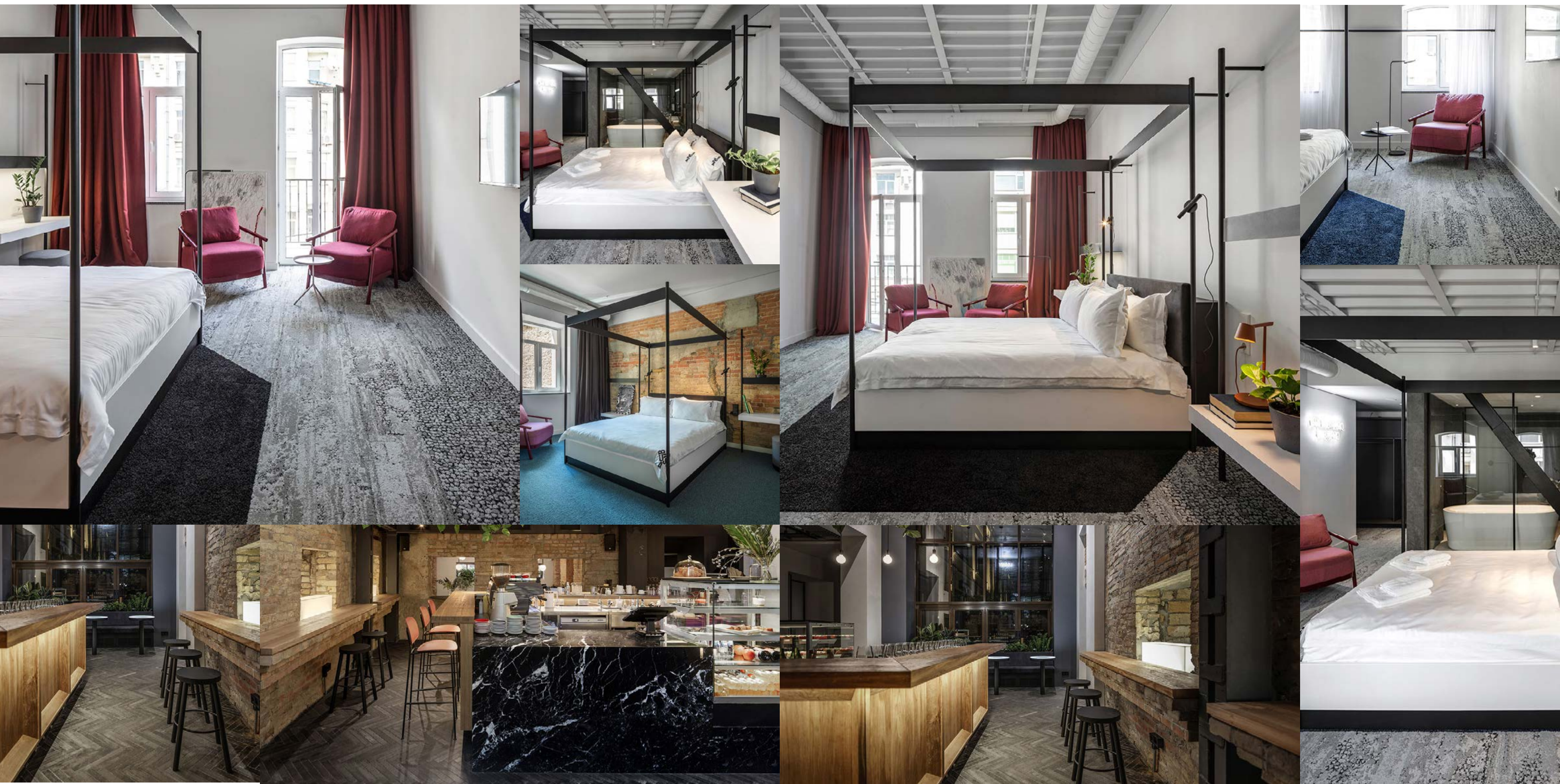


On April 12, the official opening of Takava Coffee-Bufferet, the second coffee shop of the same-name network, took place. The first Takava was opened on summer 2017. Takava is a joint project of entrepreneurs Ervin Memetov and Bekir Suleymanov.

The concept of a café is based on a specialty coffee of own roasting, author cocktails and parties. In addition, the new Takava has a full kitchen, which cooks breakfasts all day. The coffee house got a spacious location, with a laconic interior designed by architects brothers Yudiny. Noble materials, such as

concrete, copper, and wood, are used to cover walls and floors, racks, and decor.

In Takava Coffee-Bufferet there are about a hundred seats of various heights. The architects have chosen C5 bar stools, as well as C2 chairs from the design bureau ODESD2 for them.



Design in Bursa is the work of the architectural studio balbek bureau. According to the designers, the common thread running through the entire space is a distinctive influence of Bauhaus style, best known for promoting functionality in architecture and design through simplified geometrical forms and minimal use of embellishments. The interior of the bar and hotel rooms used vintage furniture from France and Norway, as well as furniture from Ukrainian manufacturers, in particular - propro and ODESD2 brands.

The BB5 chairs of the BB series designed by Slava Balbek took their places near the bar tables, and the BB3 chairs in standard black and unusual red colors became part of the cozy Nice, Super Nice and Wonderful rooms.



About a month ago a new restaurant 4CITY opened its doors in Odessa. This project is more than a one more trendy spot, it is “Helpful location for Odessa”. 300 investors were involved and a significant part of the income will be spent on social projects in the city.

The original format was realized in the building of a former institution for mud cures. The authors of the project, 2Bgroup bureau, worked attentively with the old space and preserved original millwork, fret and partly old tiles in the restaurant zone.

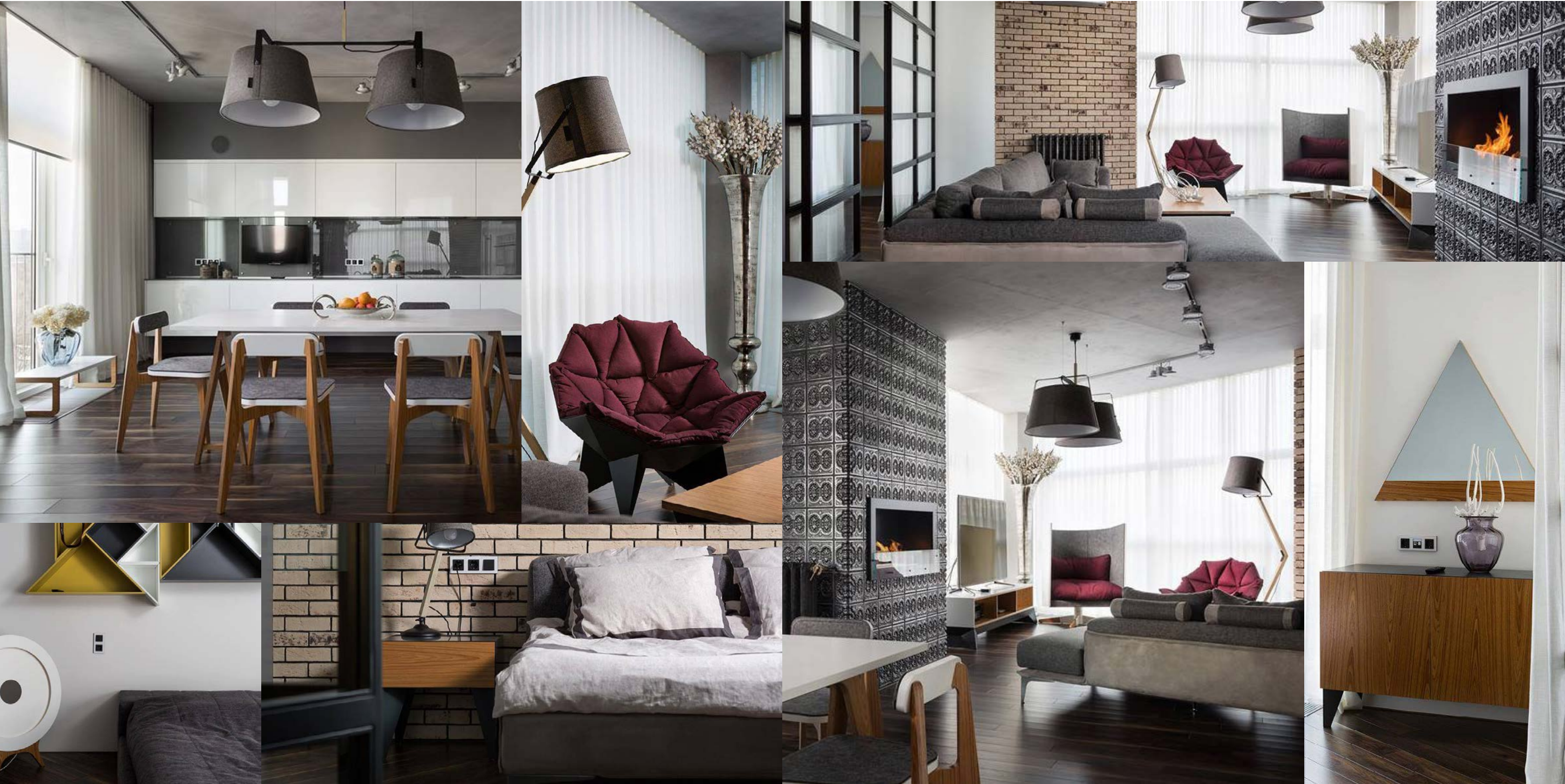
Designers filled the interesting and rich in details

space with simple and functional furniture, partly from the blackblack collection which was created by Slava Balbek for design bureau ODES2. In different zones of 4CITY you can see BB2 or BB3 chair, BB3 sofa and BB4 barstool.

«The furniture of the blackblack collection is a kind of a play with time. We rethought the classical bentwood chair and laconic simple models appeared from it. 4CITY space has a similar story», – told architect Slava Balbek.

Location: Odessa, Kanatna st., 27/1

APARTMENT BY TREBADESIGN



The main accents in the cozy eclectic apartment in Kharkiv are a combination of different surface textures and modern furnishing.

The authors of the project paid big attention to the walls and ceiling. Wall with built-in fireplace is emphasized with relief design. There are brick walls in the bedroom, living room, and corridor. The mood of loft appears because of concrete ceiling. There are many pieces of modern furniture in the apartment.

The emphases of the living room are lounge chairs Q1 and V1 Rotate in marsala color upholstery. Big T1 table corresponds to modern kitchen with the ideal white facade. The S4 shelf organizes little stuff in the corridor. L1 lamp provide cozy atmosphere to the bedroom.

Location: Kharkiv

BROCARD NICHE BAR



The interior of the boutique Niche Bar is made in a minimalist style: the perfume is located on the loft racks, the tasting process takes place at the bar tables. Bearing support, it is also a storage cabinet, is covered with a mirror, due to which the illusion of a floating concrete countertop is created. The tables are equipped with bar stools E1 from ODESD2, and in a separate lounge area there is a sofa of the E series.

Location: Kyiv

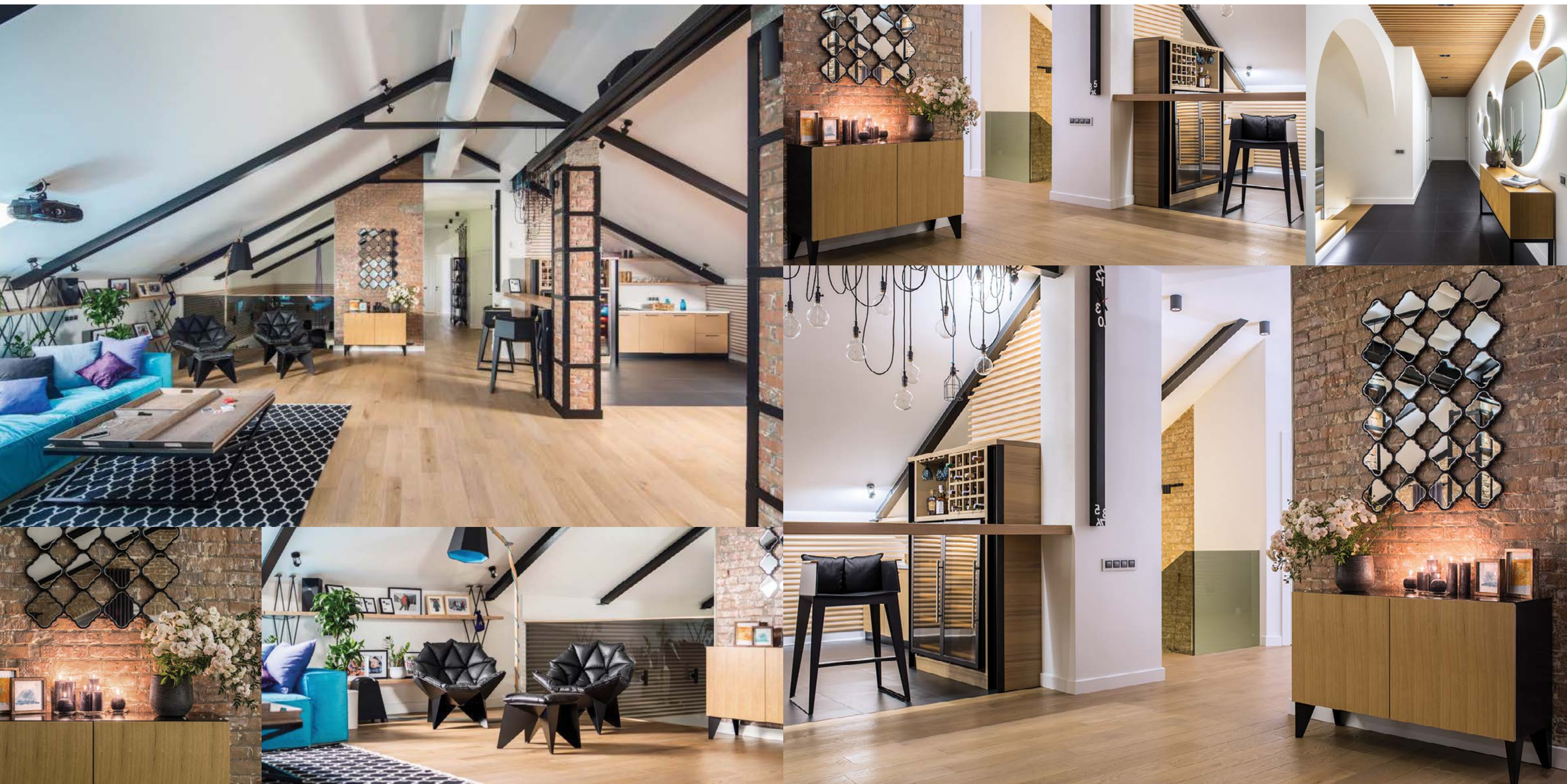
“FFU PRODUCTION” OFFICE



In the interior of the office, ODESD2 design bureau products are applied: R-series with coffee tables, Q1 chairs for rest and negotiations in the reception area and in the meeting room, as well as E16 chairs and office furniture. All work desks are equipped with electrification system for convenient connection of personal equipment of employees, and conference table - additional HDMI modules for connection to the projector.

Location: Kyiv

PRIVATE HOUSE INTERIOR



Architect Oksana Dolgopyatova presented the interior of a private house in the village of Mikhailovka-Rubezhovka. By texture, material, subject matter and colors - this is a generous eclectic bouquet with character and careful study of details. Each zone has its own central element: a color spot, a complex surface, an accent piece of decor or furniture. In different areas of the house there is a chest of drawers E13, bar stools E4, chest of drawers O12 and chairs Q1 with ottomans Q2 in non-standard upholstery.

Dealers

UKRAINE	WORLD
KYIV Petropavlivska st. 14-E, 08130 "Diamant" furniture store +38 050 750 88 22 +38 067 804 64 74 ukraine@odesd2.com	Germany GAMBURG +49-174-335 31 28 +49-162-989 33 53 USA NEW-YORK +1-650-285 80 76 Poland POZNAN "Pleasure by Ann" Spychalskiego str., 8/38, 61-543 +48-784 108 385 KRAKOW "Craft Poland" Zaborska str., 1, 31-354 +48-578-570-067



Contract DivisionContract Division

As a design bureau we offer different solutions in product and interior design. From a simple furniture placement to interior design with visualisations and blueprints - our goal is to provide high quality service. Just like our furniture is.

Tell us more about your project needs. Whether it is an office or a private house - we have prepared offers for all kinds of premises. Leave a request contract@odesd2.com to get a quotation.

For press: media@odesd2.com

