

# WHAT'S NEW JAN. 2018



HAMILTON CONTE  
PARIS

1970s Milan confronts Japanese classic in the latest Hamilton Conte presentation. A somewhat unexpected combination, but as eclecticism and the mixing of cultures is a tenet of the brand, it remains logical if not a bit of a design challenge. "I've always been intrigued by Japanese style, however, as I tend to be inspired by 1970s lines, I wanted to interpret something Asian in a way that mixed with the Seventies," comments Fabian Pellegrinet Conte.

The transition in styles from the relatively strict furniture of the 1950s and 1960s to the more ebullient style of the 1970s came about partially due to the fact that people were spending more time out of the home, travelling, going out to bars and discos... "If we think of Studio 54 for example, there tended to be very low-lying couches that people threw themselves on. People's habits outside transitioned into their habits in the home, so the way people lived and the furniture they sought reflected this," adds Pellegrinet Conte.

The way people received guests evolved quite a bit during that period. The lower and deeper sofas were just one of these trends. "Milan at that time was a cosmopolitan an international city that, in terms of design especially, was in my opinion quite fashion forward." The Lapo sofa concept presented in 2018 is inspired by this time and aesthetic. "Horizontal lines and symmetry express calm and equilibrium but tend to correspond to a more Asian aesthetic that could also be considered somewhat 1970s. The West tends to prefer asymmetry, which I tried to bring into the Lapo sofa system."

Along with the new sofa system, there are two new armchairs: Solata, which is Asian inspired and Nico, which has a hammered iron structure. Metal, as always, remains a source of inspiration for Hamilton Conte with the introduction of the hammered iron Mantua and Etra table concepts as well as a new metal pouf Donato. There is also an homage to wood through the massive Silas table concept, as well the Manolo sideboard. Finally, and adding to the eclectic flair of the brand, there is the Machu Picchu art piece and room divider screen, which accompanies the cross-cultural feeling of the 2018 collection.

[www.hamiltonconte.com](http://www.hamiltonconte.com)  
+33 1 75 57 76 52  
[showroom.paris@hamiltonconte.com](mailto:showroom.paris@hamiltonconte.com)

  
ALEXANDRA PUBLIC RELATIONS  
PRESS CONTACT  
[sylvain@alexandrapr.com](mailto:sylvain@alexandrapr.com) (France)  
[juliana@alexandrapr.com](mailto:juliana@alexandrapr.com) (International)  
+33 1 75 57 76 52



MANTUA . TABLE



Our latest contemporary table range in an Etruscan inspired hammered iron includes a cocktail table as well as a side console. The mix of the organic texture with clean lines makes it an ideal element to bring eclecticism as well as a handmade look to any interior.

SILAS DINING / CONSOLE / COCKTAIL . TABLE



These tables were inspired by the Eucalyptus forests of Portugal, and the name is a nod to the Roman God of Forests. The idea was to show the force of the material, making a monolithic structure showing wood in all its massiveness. Contemporary lines and thickness confer to this table a strong presence in any interior. The Eucalyptus veneered top adds texture and visually lightens the weight of the brushed ash legs. Available in Dining, Console and Cocktail table versions.

MANOLO . SIDEBORD



Hand-cast brass legs give this piece a nice lift, as we give a nod to its namesake. Manolo is a distinctive sideboard with an endless array of door facade options. Its cast brass handles, in harmony with its legs, repeat their form. The dark oak structure gives the appropriate air of sobriety to your choice of fabric along with its lovely brass accents.

ETRA COCKTAIL . TABLE



The Etruscan inspired hammered iron of these cocktail tables brings a bit of ancient world charm to an otherwise contemporary form. Three different surfaces – glass, Emperador marble and a bronze enamelled iron tray top – allow for visual diversity and texture.

POMPEIA COCKTAIL / BAR / DINING . TABLE

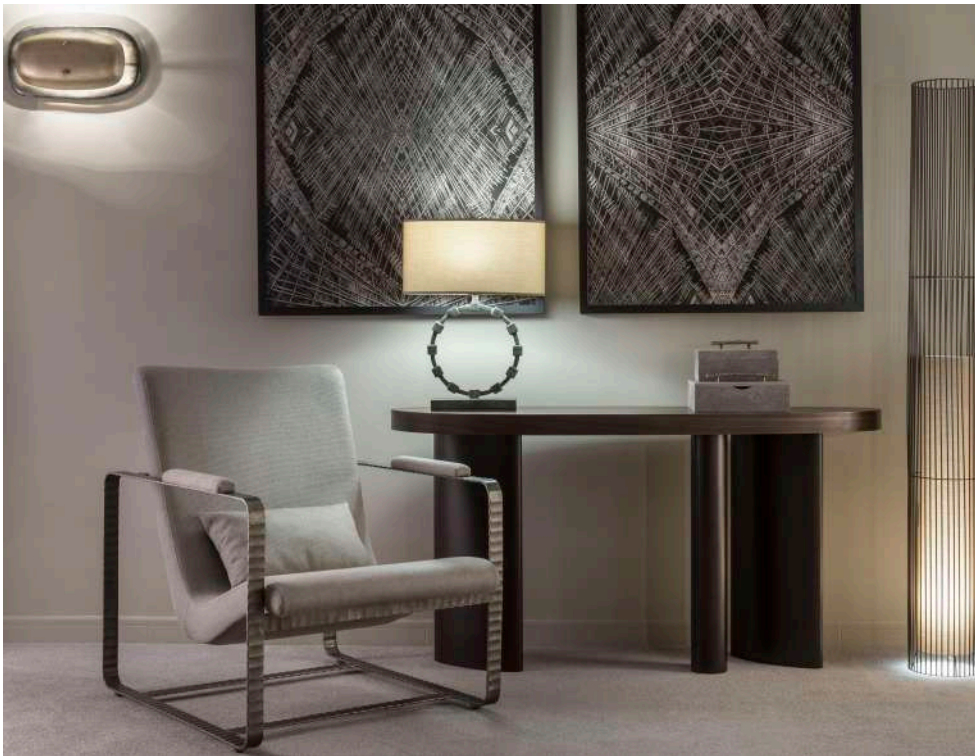


With their gilded glass tops and brushed ash construction, this range of tables will liven up any space. Available in coffee and side table as well as bar and dining table versions.

MACHU PICCHU . ART



This vision of Machu Picchu dates back from the 1970s and was done by Fabian Pellegrinet Conte's close friend, Argentine artist Esther Lopez. The form, colours and shapes blend perfectly into the aesthetic of the 2018 collection. The work exists as a framed print, an unframed wall panel and a room divider screen.



NICO . ARMCHAIR



As we so enjoy working in hammered iron, it was inevitable that this fabulous textured material would find its way into the seating collection. The Nico chair brings together geometry, organic texture and the curve. It brings an ideal mix of eclectic energy and pragmatic functionality.

SOLATA . ARMCHAIR



The name is a reference to the designer's first experience with Asian culture from childhood while the inspiration of this armchair comes from the imperial porter chairs once used in Asia for royals and officials, with obvious adaptations to 21st century life. The addition of cast brass feet adds a slightly more European feel to this Asian inspired piece. It is a great piece to include in one's interior for a bit of eclecticism and handmade detail.





DONATO . POUF



Poufs are immensely practical pieces and add an element of fun to many spaces. The Donato pouf brings a bit of metal, which we always enjoy, as well as visual lightness. One may really play with the fabric to make the piece either fun or staid.









module 2.1 left + corner + pouf + module 1.0 right + optional leather armrests

## LAPO . SOFA SYSTEM

An incredibly comfortable sofa, the objective behind the Lapo system was to bring together geometry and curves. The asymmetrical cylinders on the sides and back are slightly reminiscent of 1970s Milanese cosmopolitan style, along with the rounded seat cushions and armrests. This sofa is available in a 3-seater fixed version, a sofa bed version and a system made up of 10 different modules, allowing one to personalise its size and form to each space. It is an ideal sofa on which to relax and unwind.



module 2.1 left + chaise longue right



sofa & sofa bed



module 1.0 left + pouf + module 1.0 right + optional leather armrests



module 1.1 left + pouf + module 1.1 right



module 2.1 left + corner + pouf + module 1.1 right





[www.hamiltonconte.com](http://www.hamiltonconte.com)