

LINVISIBLE

LINVISIBILE

We are an Italian company which manufactures opening and closing systems unique in the world. We don't sell doors. We don't have a product catalogue. We listen to your desires and create the type of door you have dreamed of. Designed in the sizes that best suit your needs, using the colors, materials, and finishes you like, with the special touch you have conceived for your interior design project. We go to the work site, follow up the installation of the door and guarantee its perfect performance, because customer satisfaction – today as always – is the only result that counts!

Our doors are concealed. We aren't.

## Contents

---

More than meets the eye	pag.4
Brezza Pivoting System	pag.8
Marea Sliding System	pag.18
Alba Hinged System	pag.28
Technical Closures	pag.38
Orizzonte Wall Dress System	pag.42
Finishes	pag.44
Responsibility	pag.46

---

# More than meets the eye

---

**Linvisible synthesizes the concepts of aesthetics, technique and the ability to listen. The result of such combination are opening and closing systems for exclusive environments. Doors that are unique in the world, personalized and made to measure.**

Linvisible, is an Italian company founded in 1984, which in the new millennium has focused in the production of exclusive and personalized opening and closing systems.

---

The company's cornerstones are three:

- **100% Made in Italy production**
- **Product personalization**
- **New system of values**

#### ITALIAN DNA

Born in the Emilia Romagna region, in the border among the provinces of Ferrara, Bologna and Ravenna, Linvisible is the natural heir of a know-how that has evolved over more than 2.000 years of history. Doing things well. And making them beautiful.

Here, artisans' hands and industrial technologies have always coexisted, and they have made this territory famous all over the world thanks to sports cars and motorcycles, precision mechanics, ceramics for architecture, packaging systems, biotechnologies, food...

Linvisible draws sustenance from the lifeblood of this territory so rich in creativity, and its project is the result of a lucky 'hunch' back in 1994 when, after listening to the building site demands raised by different architects, the company was able to transform an artisanal carpentry system into an industrial process guaranteed over time.

Linvisible products are 100% made in Italy. Doors and systems developed with an almost obsessive care. Beautiful and well done. Pleasant and long-lasting. Pure luxury. Nothing less. Doors made to live well.



**PERSONALIZED PRODUCT**

Doors tailored to the customer's needs. Doors that open like as if in a dream.

In ancient times, they were called 'secret doors'. Kings, popes, aristocrats, monks and merchants had hidden doors made in the boiserie, in walls, in upholstery. Invisible doors. Doors developed to conceal from sight passages whose existence was to be unknown.

Linvisible has been the first-ever trademark to manufacture totally flush-to-wall doors and technical closures. The exclusive patented 'invisible system' eliminates posts, frames and exposed hinges making every movement and opening perfect. Turning each door into a unique piece. A declared or secret wonder.

Nowadays doors are a key element in an interior design project. Both in terms of aesthetics and for functional reasons.

Linvisible fulfills the customer's desire and the designer's ideas, manufacturing personalized doors for any environment, in any colors, materials and camouflages they wish.

Unify and separate, privacy and silence, large openings and full height, comfort and surprise, luxury and sobriety, rigor and playfulness, minimalism and baroque, precision and mimicry.

**EVERYTHING IS POSSIBLE**

Linvisible is a made-to-measure project. As such, it's always moving and in constant evolution. From 2015 a new era begun, in the communication and visualization of the product along with extraordinary projects all over the world.

Linvisible has entrusted the art direction and the communication of its new path to the Milanese Architect Matteo Ragni and his team of creatives and designers. The purpose is the complete affinity between the elevated positioning of the product/service and the visual language which expresses it.

**NEW SYSTEM OF VALUES:****1. DESIGN**

We think and design together with architects.

**2. MANUFACTURING**

We manufacture unique and reliable pieces.

**3. DELIVERY**

We follow manufactured products up to their destination.

**4. INSTALLATION**

We take care of the correct installation of our products.

**5. MAINTENANCE**

For Hotels and Residences, we offer scheduled maintenance.

The most important moment is when the door installation has been completed and, together with the customer, we put it into operation. What really counts is to see customers amazed as well as satisfied, to see a smile on their faces.

---

# Brezza

---

## Pivoting System

---

**Brezza represents the spirit of pivoting doors flush to the wall. Closing systems that can be opened with just a puff of breath.**

— VERSIONS

- Filo 10 Vertical Pivot door
- Vertical Pivot door





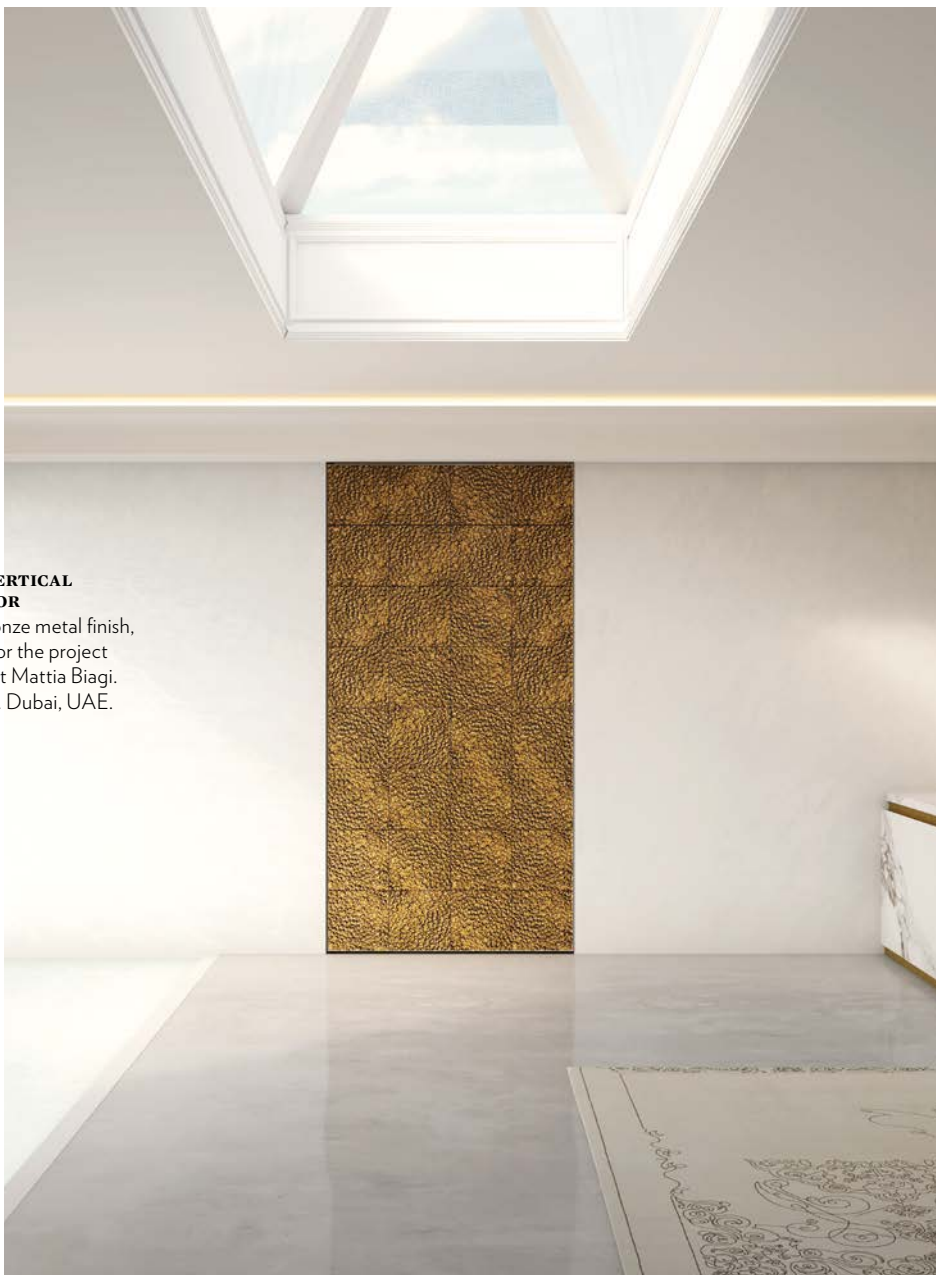


Brezza

**VERTICAL PIVOT DOOR.  
DOUBLE LEAVES VERSION**

Boiserie system in continuity  
with the wall. Painted  
as wall finish. Private house.  
Kiev, Ukraine

Brezza  
**FILO 10 VERTICAL  
PIVOT DOOR**  
Special bronze metal finish,  
designed for the project  
by the artist Mattia Biagi.  
Penthouse. Dubai, UAE.







Brezza

**FILO 10 VERTICAL  
PIVOT DOOR. DOUBLE  
LEAVES VERSION**

Metal copper finish.  
Matte surface.

Flat. Los Angeles, USA.





Brezza

**FILO 10 VERTICAL PIVOT  
DOOR. DOUBLE LEAVES  
VERSION**

Alcantara® Anthemusa  
finish. Tailor made handle.  
Penthouse. Moscow, Russia.

---

# Marea

---

## Sliding System

---

**Marea represents the fluid movement of a sliding door, opening completely and perfectly flush to the wall.**

— **VERSIONS**

- Concealed Sliding door, either manual or motorized version
- Altopiano and Marechiaro Sliding Systems by Giulio Cappellini
- Pocket door for 105, 125, 150 mm wall thickness, double leaves and glass panel version







## Marea

**MARECHIARO SLIDING SYSTEM.**

**MULTIPLE LEAVES.**

**CEILING RECESSED RAIL**

Stratified colored glass finish,  
black anodized aluminium frame.

Company headquarters.

Dubai, UAE.



Marea  
**CONCEALED SLIDING  
DOOR. MANUAL VERSION**  
Natural stone finish.  
Boiserie system in  
continuity with the wall.  
Recessed handle.  
Penthouse. Houston, USA







### Marea

**ALTOPIANO SLIDING SYSTEM.  
MULTIPLE LEAVES.**

**CEILING RECESSED RAIL.**  
Stained black oak finish.  
Full height recessed handle  
in silver anodize aluminium.  
Luxury mountain retreat.  
Courchevel, France.



Marea

**POCKET DOOR.**  
**DOUBLE LEAVES VERSION**  
Glossy lacquered finish,  
recessed handle.  
Private house. Phoenix, USA.



Marea

**CONCEALED SLIDING  
DOOR. MOTORIZED  
VERSION**  
Microcement finish.  
Remote controlled opening.  
Private house. Minsk, Russia.

LINVISIBLE — 27



---

# Alba

---

## Hinged System

---

**The rising of the sun is translated into a simple gesture: the opening of a hinged door. An opening vertical horizon.**

— VERSIONS

- Filo 10
- Infinito
- Fire Resistant
- Curved
- Hinged Traditional





Alba  
**FILO 10 HINGED DOOR.  
DOUBLE LEAVES VERSION**  
Wood essence finish, with  
boiserie system in continuity  
with the wall. Tailor made  
handles. Flat. Chicago, USA.





Alba  
**FILO 10 HINGED DOOR**  
Wallpaper finish in continuity  
with the wall. Luxury Hotel.  
Moscow, Russia.



Alba

**INFINITO HINGED DOOR**

Retro lacquered glass finish,  
glossy effect. Outer  
aluminium frame system.  
Hotel. Rome, Italy.



Alba

**HINGED DOOR**

Veneered wood finish,  
horizontal vein.  
Traditional handle.  
Summer villa.  
Vancouver, Canada.





Alba

**HINGED DOOR. CURVED  
LEAF VERSION**

As wall finish.  
Penthouse. Doha, Qatar.



# Technical Closures

Close with elegance even the most technical spaces, this is the **Technical Closures** prerogative. Design solutions to hide from sight, or on the contrary, highlight the wall.

- **VERSIONS**
- Extra Closures
  - Nicchio
  - Special Closures

## Technical Closures

### EXTRA CLOSURES. MULTIPLE LEAVES VERSION

Lacquered finish, glossy effect. Invisible flush fitting handle. Private Villa. Milan, Italy.





## Technical Closures

### EXTRA CLOSURES

Veneer wood finish,  
invisible flush fitting handle.  
Hinged door full height  
version, veneer wood finish.  
Private house. Moscow, Russia.



## Technical Closures

### NICCHIO. MULTIPLE LEAVES VERSION

Wallpaper finish. Push-pull  
opening. Private house.  
Zurich, Switzerland.





# Orizzonte

## Wall Dress System

### **Boiserie system**

Exclusive “thin skin” system to coat walls in perfect planarity with the doors.

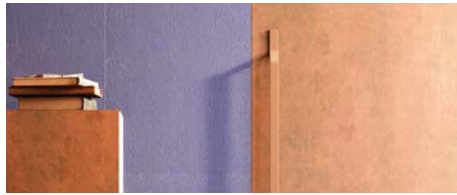
### **Skirting system**

A baseboard system to better complete the offer of flush to wall elements.



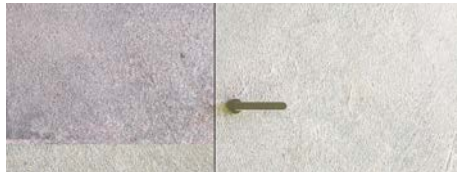
Orizzonte  
**BOISERIE AND  
SKIRTING SYSTEMS**  
Glossy metal finish, marble  
stone in continuity with  
the wall. Penthouse.  
Boston, USA.

# Finishes



## Metal

Brilliant and matte metal surfaces, amazing finishes which can be applied on all doors, available for the designers to give shape to a space that reflects his/her imagination.



## Stone

Linvisible gets decked out with extra-thin natural stone slabs, to enrich with vein-lines and undertones the panels of the entire Linvisible door range.



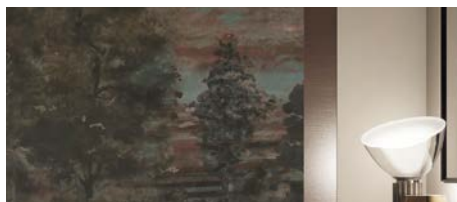
## Lacquering

The lacquer is one of the most elegant forms of panel finishes. Precious shining surfaces, in a wide range of colours, that brings a tone of exclusivity and elegance to every space.



## Moulded panels

Elegant moulded processing method with a high level of accuracy on all door panels, for rich and sumptuous decorations that give interiors a refined touch.



## Wallpaper

Wallpaper creates visual solutions that reflect the style and aesthetic preferences of the designers. The creative value and versatility of wallpaper designs are the ideal solution for giving life to new visual identities.



## Glass

Exciting and dynamic effects, this versatile material can be used translucent or retro-lacquered; it allows the designer to play with reflections and privacy, a noble material to create contemporary spaces.



## As wall

The finishes “as the wall” allow the most complete integration of the door with the wall. The door becomes a single surface with it, creating a special effect of absolute continuity.



## Wood

Quality surfaces of exclusive refinement. Traditional and modern styles blend in high-quality durable and prestigious woods. Wood essence and veneered wood are the best materials to create a warm atmosphere.



## Leather

The most innovative of finishes. Leather is a natural product with very high durability and aesthetic characteristics. A prestigious choice to coat surfaces with original textures, to stand out with unique, prestigious and sophisticated materials.



## Special materials

For the most particular projects, Linvisible is able to work with special finishes, completely innovative and trendsetting upon request. Materials such as Alcantara®, laminate, gres porcelain, special compounds, textiles, mosaic, resin, plaster, raw earth and textural matters are some examples of our personalisation capacity.



# Responsibility

We at Linvisible look into the future without forgetting about the past. This is why we are fully committed to the protection of our resources, either human or environmental without ever compromising the quality of our products and processes. We are constantly innovating in every step of our value chain to maintain the highest manufacturing standards and promote a sustainable practice.

Design and manufacture of interior doors and closure systems and spaces coating



FSC® certified products available on request



— **ISO CERTIFICATION**  
Linvisible obtained the ISO 9001 quality certification from ICILA, the sole specific certification entity for the furniture and woodwork industries. At the same time, our network of technicians, suppliers and experts, always at the designers’ service, assures the quality of the services offered. **All the Linvisible products comply with UNI EN 316, UNI EN 952, UNI 7961 standards.**

— **FSC® CERTIFICATION**  
The FSC® Certification, Forest Stewardship Council, is the primary assurance mechanism on the origin of wood or paper. It is an international certification system which ensures that the raw material used to make a wooden or paper product comes from forests managed in a responsible way, where environmental, social and economic standards are strictly met.  
The demand, from consumers, for goods and services that respond to the requirements of “environmental quality” has grown exponentially.  
To the same extent, Linvisible’s commitment and investment has increased, with great attention, the company has undertaken paths in favour of issues related to environmental sustainability. In particular through the FSC® Certification, to ensure and demonstrate the proper use of forestry products and the maintenance of the principles to which the certification is based on with regard to the responsible management of forests and timber products, Linvisible becomes part of the chain of custody which regulates the supply of the wood, becoming the guarantor towards its customers.  
Upon request, all Linvisible products can be realized according to the FSC® Certification criterion, which involves a responsible forest management.



Linvisible’s products can satisfy the LEED®’s protocol requirements

— **LEED® PROTOCOL**  
The LEED® standard (Leadership in Energy and Environmental Design) is a construction standard based on certain fundamental principles such as the containment of the energy used (including the use of recycled and recyclable materials), the control of polluting sources (both during the construction phase, and in use of the property) and the commitment to maintain a comfortable environment for those who will have to reside.  
The LEED® certification is issued to the building as a whole, not to the individual product. The final score of the building will depend in large part on the correct selection and use of compliant products. For architects, designers and clients it’s essential to know for sure what the market offers at the level of “LEED® Compliant” products.  
This is the fundamental reason why Linvisible undertook, with determination, the path to verify its products conformity, and in doing it so, contribute to the LEED® certification of buildings.  
The analysis, carried out by qualified technicians, about the construction features, performance and on the used materials, determines the type and number of credits with which Linvisible products contribute to achieving the LEED® standard.

---

**LINVISIBILE**  
**CREATIVE DIRECTION**  
Matteo Ragni Studio

**GRAPHIC DESIGN**  
Alessandro Boscarino

**PHOTO**  
Max Rommel

**POSTPRODUCTION**  
Studio Dilux

**IMAGES AND RENDERS**  
ImagineCG

**TEXTS**  
Virginio Briatore

**PRINT**  
Grafiche dell'Artiere

**THANKS TO:**  
Studio Cappellini — cappellini.it  
Mattia Biagi — mattiabiagi.com  
Alpi — alpiwood.com  
Jannelli&Volpi — jannellievolti.it  
Palazzo Morelli® — palazzomorelli.it  
Alcantara® — alcantara.com

---

**LINVISIBILE**  
**BY PORTARREDO SRL**  
via C. Besana, 1 Argenta (Fe)  
+39.0532.800960  
info@linvisibile.it

**LINVISIBILE SHOWROOM**  
via Lovanio 5, Milan  
Opening hours:  
Mon-Fri | 9:30 am > 1 pm | 2 pm > 6:30 pm  
+39.348.3774466  
linvisibile.com

© Copyright... April 2018

These documents are the exclusive property of PORTARREDO S.R.L. and are protected by Italian law as well as by international laws, treaties and agreements on intellectual property. They may not be copied, reproduced, translated or transcribed in any form in whole or in part, without the prior written authorization of PORTARREDO S.R.L. The utmost attention has been paid to these documents before printing. However, because of continuous technological development and since we are constantly engaged in the development and improvement of our product range, we reserve the right to modify specifications of any product without prior notice.



